

Project: _____

Type: _____

Note: _____

LUXE CYLINDER - FLUSH MOUNT



2" Flush Mount Cylinder



3" Flush Mount Cylinder

LED LIGHT ENGINE	
RATED WATTAGE	2" (16.4W), 3" (25W)
DELIVERED LUMENS	Up to: 2" 1383 lm, 3" 2589 lm
CCT/CRI	2700K 90CRI, 3000K 90CRI, 3500K 90CRI
COLOR QUALITY	90+ CRI, R9>50, 2-Step SDCM
LED LIFETIME	>55,000 hours @ L90

SILENT VU™ OPTICS TECHNOLOGY	
OPTICS	50° Installed, 10°, 30°, 80° Available
ADJUSTABLE	Non Adjustable
OPTICAL MEDIA	Clear, Solite, Frosted, Linear Spread, Hex Louver

DELIVERED LUMENS MATRIX				
LUXE 2IN (16.4W)	10° OPTIC	30° OPTIC	50° OPTIC	80° OPTIC
2700K (90CRI)	1146 lm	1267 lm	1171 lm	969 lm
3000K (90CRI)	1216 lm	1345 lm	1243 lm	1029 lm
3500K (90CRI)	1251 lm	1383 lm	1278 lm	1058 lm

POWER SUPPLY	
INPUT VOLTAGE	120/277V, 50/60Hz
DIMMING	TRIAC, ELV and 0-10V, dims to 1%
SERVICABILITY	Light Module and Driver Field Serviceable

LUXE 3IN (25W)	10° OPTIC	30° OPTIC	50° OPTIC	80° OPTIC
2700K (90CRI)	2041 lm	2364 lm	2197 lm	1765 lm
3000K (90CRI)	2173 lm	2518 lm	2339 lm	1879 lm
3500K (90CRI)	2235 lm	2589 lm	2406 lm	1933 lm

STANDARD FINISH

- WT (Semi Gloss White)
- DB (Distressed Bronze)
- MB (Matte Black)
- PBR (Patina Brass)

MOUNTING

- 5" canopy included with standard universal dim driver
- Canopy mounts to a 4" round junction box

LISTING/WARRANTY

- Five (5) year limited warranty
- UL Listed for 40°C Ambient
- CA Title 24-JA8 Compliant



Project: _____

Type: _____

Note: _____

LUXE CYLINDER - FLUSH MOUNT

ORDER MATRIX

Decorative Cylinder

(Example: LX2FM-15-27-50-DB-S = Luxe 2" Cylinders, Flush Mount, 15W, 2700K, 90CRI, 50°, Distressed Bronze, Standard Driver)

PRODUCT FAMILY/WATTAGE	CCT & CRI	OPTIC	STANDARD FINISH	STANDARD DRIVER
LX2FM-15 Flush Mount 2", 15W LX3FM-25 Flush Mount 3", 25W	-27 2700K 90CRI -30 3000K 90CRI -35 3500K 90CRI	-50 50° Optic	-DB Distressed Bronze -PBR Patina Brass -WT Semi Gloss White -MB Matte Black	-S Universal Dim Driver: 1%-100% 0-10V, TRIAC, ELV, 120V/277V Note: TRIAC, ELV dimming for 120V only.

Accessories (2" Cylinder)

OPTIC	MEDIA
C2-10-OPTIC 10° Spot	C2-CL Clear Lens
C2-30-OPTIC 30° Narrow Flood	C2-MP Solite Lens
C2-50-OPTIC 50° Flood	C2-FR Frosted Lens
C2-80-OPTIC 80° Wide Flood	C2-LS Linear Spread Lens
	C2-HEX Hex Louver

Accessories (3" Cylinder)

OPTIC	MEDIA
C3-10-OPTIC 10° Spot	C3-CL Clear Lens
C3-30-OPTIC 30° Narrow Flood	C3-MP Solite Lens
C3-50-OPTIC 50° Flood	C3-FR Frosted Lens
C3-80-OPTIC 80° Wide Flood	C3-LS Linear Spread Lens
	C3-HEX Hex Louver

Project: _____

Type: _____

Note: _____

LUXE CYLINDER - FLUSH MOUNT

METALLIC BEZEL ACCESSORY ORDER MATRIX

Decorative Bezel

(Example: BZL-2-DR-PBR = Bezel, 2", Deep Regress, Patina Brass)

PRODUCT FAMILY	SIZE	STYLE	FINISH
BZL Bezel	-2 2"	-DR Deep Regressed	-DB Distressed Bronze
	-3 3"	-KN Knurled	-PBR Patina Brass

STONE BEZEL ACCESSORY ORDER MATRIX

Decorative Bezel

(Example: BZL-2-ALA = Bezel, 2", Alabaster)

PRODUCT FAMILY	SIZE	STYLE
BZL Bezel	-2 2"	-ALA Alabaster
	-3 3"	-WM White Marble

FINISHES



WT
Semi Gloss White



MB
Matte Black



DB
Distressed Bronze



PBR
Patina Brass



LUXE CYLINDER

Spec-00287 Luxe Cylinder FM, V1.0 Revised 12/06/24

Project: _____

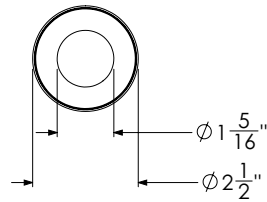
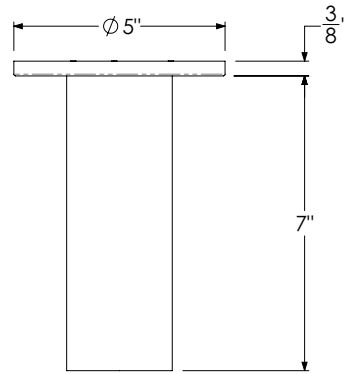
Type: _____

Note: _____

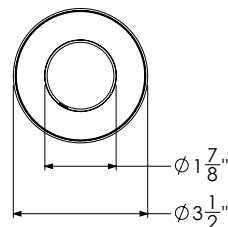
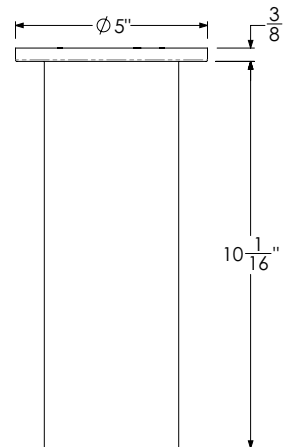
LUXE CYLINDER - FLUSH MOUNT

HOUSING LINE DRAWINGS

2" FLUSH MOUNT



3" FLUSH MOUNT





LUXE CYLINDER

Spec-00287 Luxe Cylinder FM, V1.0 Revised 12/06/24

Project: _____

Type: _____

Note: _____

LUXE CYLINDER - FLUSH MOUNT

BEZEL OPTIONS



BZL-2-DR-DB
2" Deep Regress
Distressed Bronze



BZL-2-DR-PBR
2" Deep Regress
Patina Brass



BZL-3-DR-DB
3" Deep Regress
Distressed Bronze



BZL-3-DR-PBR
3" Deep Regress
Patina Brass



BZL-2-KN-DB
2" Knurled
Distressed Bronze



BZL-2-KN-PBR
2" Knurled
Patina Brass



BZL-3-KN-DB
3" Knurled
Distressed Bronze



BZL-3-KN-PBR
3" Knurled
Patina Brass

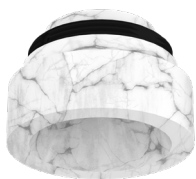
Project: _____

Type: _____

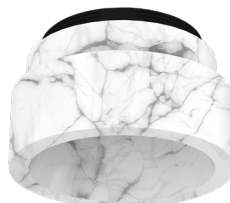
Note: _____

LUXE CYLINDER - FLUSH MOUNT

BEZEL OPTIONS



BZL-2-WM
2" White Marble



BZL-3-WM
3" White Marble



BZL-2-ALA
2" Alabaster



BZL-3-ALA
3" Alabaster



LUXE CYLINDER

Spec-00287 Luxe Cylinder FM, V1.0 Revised 12/06/24

Project: _____

Type: _____

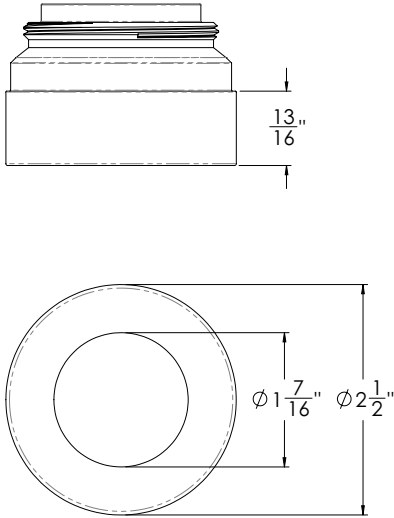
Note: _____

LUXE CYLINDER - FLUSH MOUNT

ACCESSORY BEZELS

2" DEEP REGRESSED

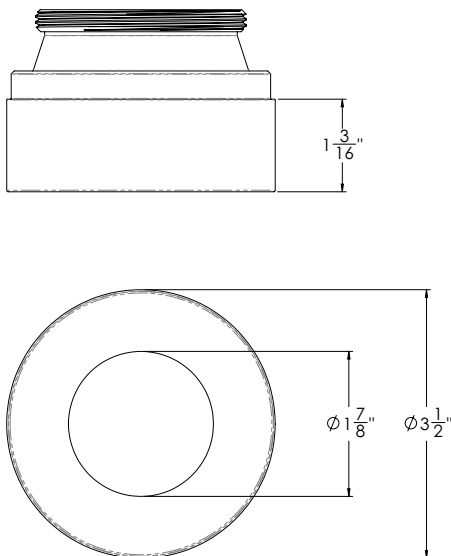
BZL-2-DR-XX



Deep Regressed
Patina Brass

3" DEEP REGRESSED

BZL-3-DR-XX



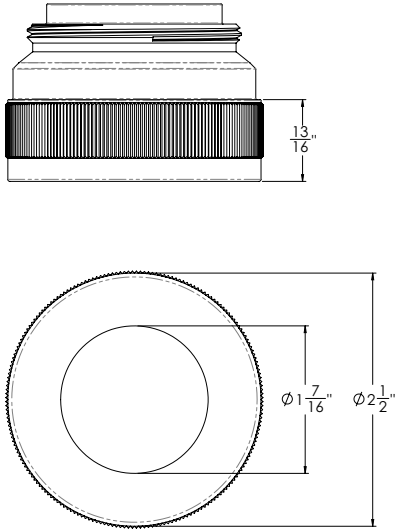
Deep Regressed
Distressed Bronze

LUXE CYLINDER - FLUSH MOUNT

ACCESSORY BEZELS

2" KNURLED

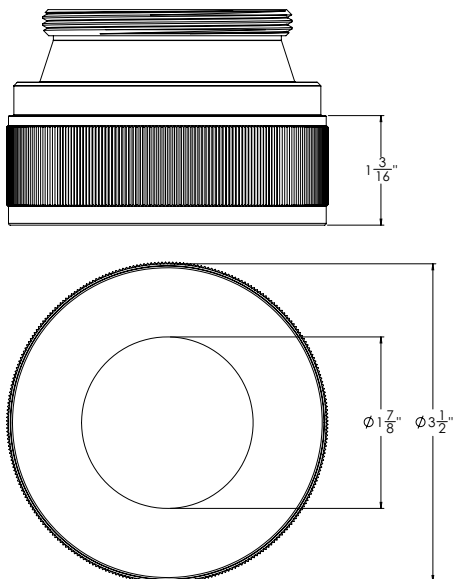
BZL-2-KN-XX



**Knurled
Patina Brass**

3" KNURLED

BZL-3-KN-XX



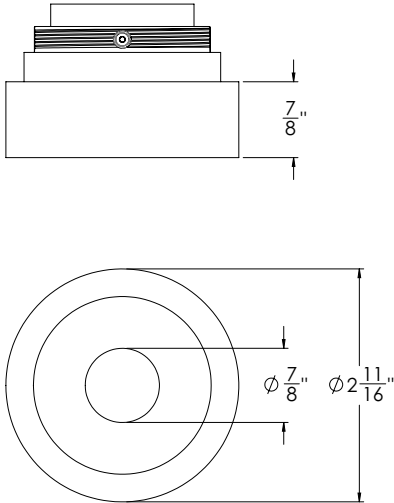
**Knurled
Distressed Bronze**

LUXE CYLINDER - FLUSH MOUNT

ACCESSORY BEZELS

2" ALABASTER

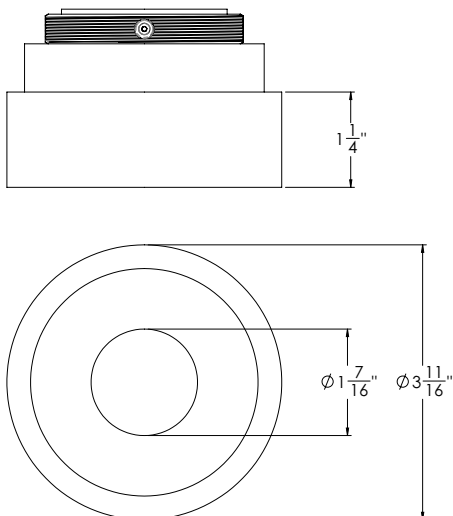
BZL-2-ALA



Alabaster

3" ALABASTER

BZL-3-ALA



Alabaster



LUXE CYLINDER

Spec-00287 Luxe Cylinder FM, V1.0 Revised 12/06/24

Project: _____

Type: _____

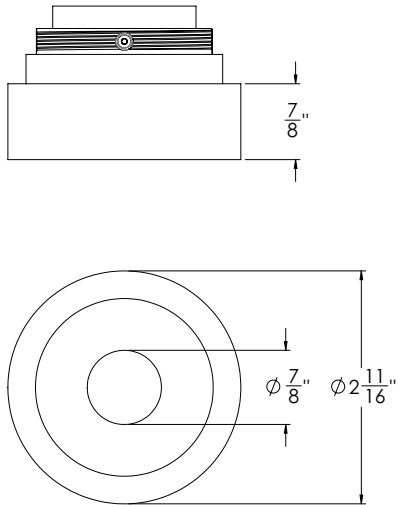
Note: _____

LUXE CYLINDER - FLUSH MOUNT

ACCESSORY BEZELS

2" WHITE MARBLE

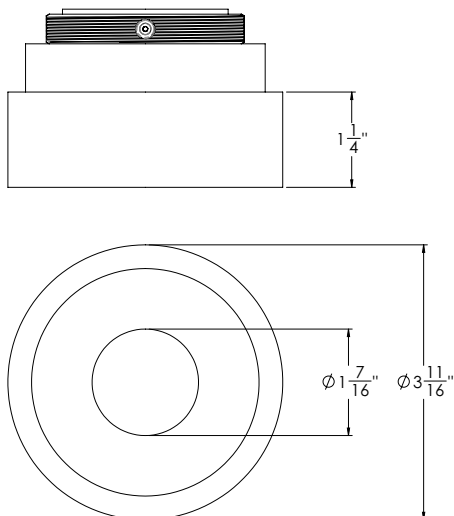
BZL-2-WM



White Marble

3" WHITE MARBLE

BZL-3-WM



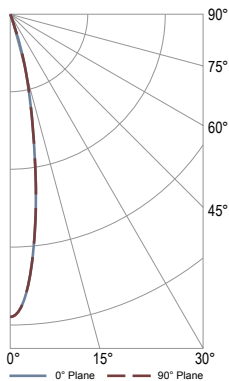
White Marble

LUXE CYLINDER - FLUSH MOUNT

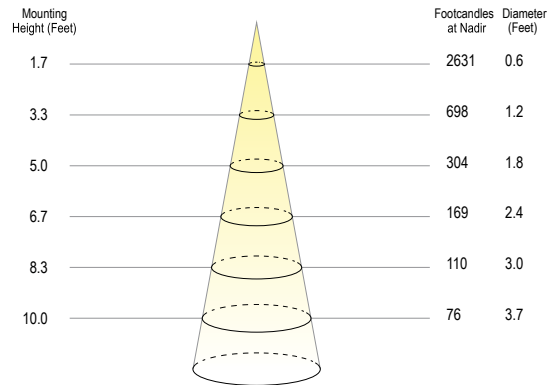
PHOTOMETRICS

2" Cylinder (2700K, 90 CRI, 16.4W)
10° Optic

Polar Plot



Cone of Light Tabulation



VOLTAGE	CURRENT	POWER
120 VAC	0.14 A	16.4W

POWER FACTOR	FREQUENCY	CURRENT THD
0.98	60 Hz	15.5%

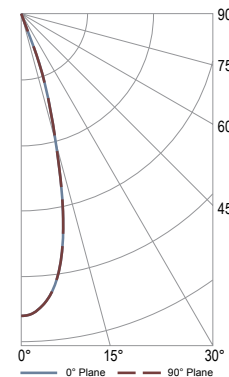
Summary of Results

Spacing Criteria	Total Lumen Output:	1146 Lumens
0-180: 0.36	Luminaire Efficacy:	70 lm/w
90-270: 0.4	Maximum Candela:	7604 Candela

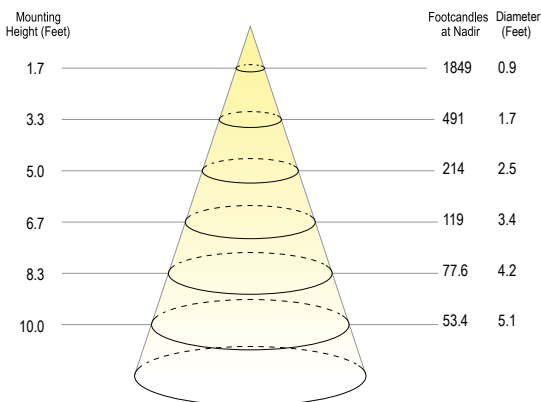
ZONE	LUMENS	% OF LUMINAIRE
0-40	1142	99.7%
0-60	1146	100%
0-90	1146	100%

2" Cylinder (2700K, 90 CRI, 16.4W)
30° Optic

Polar Plot



Cone of Light Tabulation



VOLTAGE	CURRENT	POWER
120 VAC	0.14A	16.4W

POWER FACTOR	FREQUENCY	CURRENT THD
0.98	60 Hz	15.5%

Summary of Results

Spacing Criteria	Total Lumen Output:	1267 Lumens
0-180: 0.50	Luminaire Efficacy:	77 lm/w
90-270: 0.50	Maximum Candela:	5343 Candela

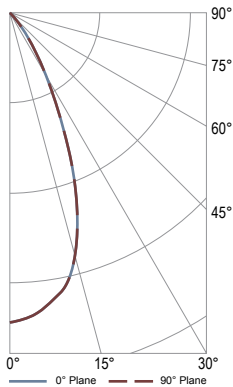
ZONE	LUMENS	% OF LUMINAIRE
0-40	1261	99.6%
0-60	1267	100%
0-90	1267	100%

LUXE CYLINDER - FLUSH MOUNT

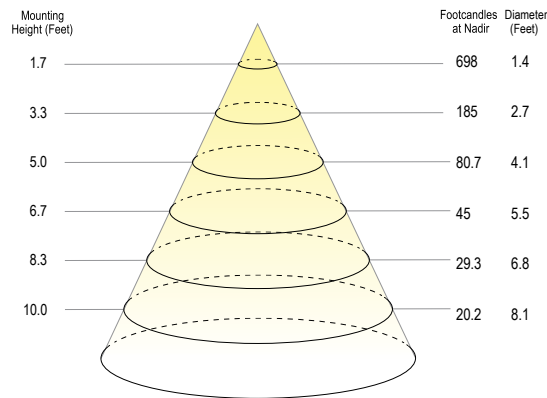
PHOTOMETRICS

2" Cylinder (2700K, 90 CRI, 16.4W) 50° Optic

Polar Plot



Cone of Light Tabulation



VOLTAGE	CURRENT	POWER
120 VAC	0.14 A	16.4W

POWER FACTOR	FREQUENCY	CURRENT THD
0.98	60 Hz	16.88%

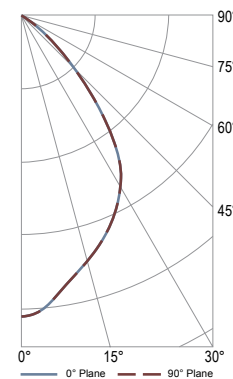
Summary of Results

Spacing Criteria	Total Lumen Output:	1171 Lumens
0-180: 0.72	Luminaire Efficacy:	71 lm/w
90-270: 0.72	Maximum Candela:	2018 Candela

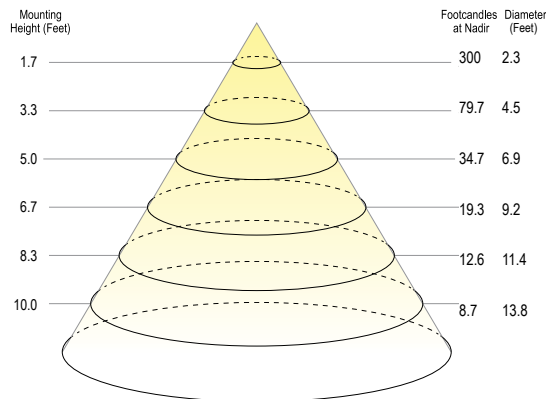
ZONE	LUMENS	% OF LUMINAIRE
0-40	1125	96.1%
0-60	1171	100%
0-90	1171	100%

2" Cylinder (2700K, 90 CRI, 16.4W) 80° Optic

Polar Plot



Cone of Light Tabulation



VOLTAGE	CURRENT	POWER
120 VAC	0.14A	16.4W

POWER FACTOR	FREQUENCY	CURRENT THD
0.98	60 Hz	15.6%

Summary of Results

Spacing Criteria	Total Lumen Output:	969 Lumens
0-180: 0.86	Luminaire Efficacy:	59 lm/w
90-270: 0.86	Maximum Candela:	868 Candela

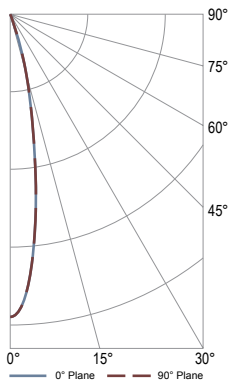
ZONE	LUMENS	% OF LUMINAIRE
0-40	769	79.4%
0-60	968	99.9%
0-90	969	100%

LUXE CYLINDER - FLUSH MOUNT

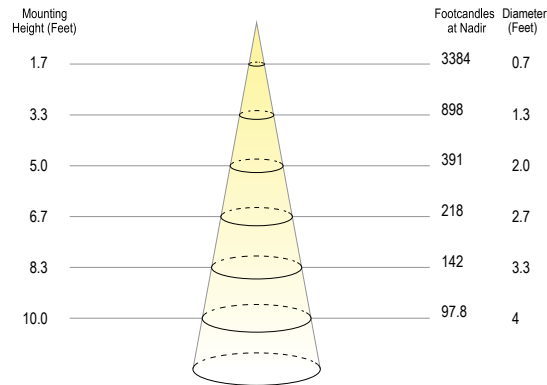
PHOTOMETRICS

3" Cylinder (2700K, 90 CRI, 25W) 10° Optic

Polar Plot



Cone of Light Tabulation



VOLTAGE	CURRENT	POWER
120 VAC	0.21 A	25W

POWER FACTOR	FREQUENCY	CURRENT THD
0.97	60 Hz	12.88%

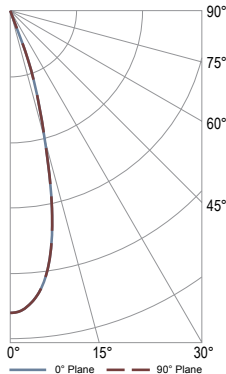
Summary of Results

Spacing Criteria	Total Lumen Output:	2048 Lumens
0-180: 0.40	Luminaire Efficacy:	82 lm/w
90-270: 0.40	Maximum Candela:	9781 Candela

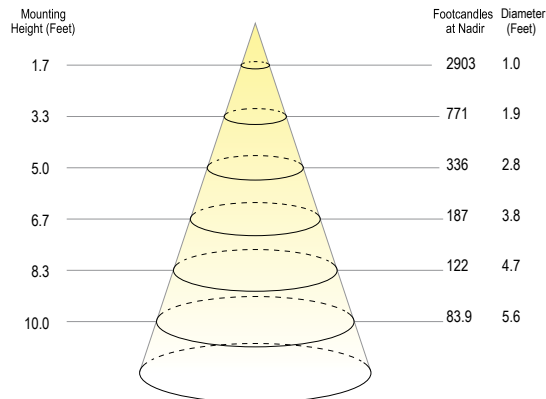
ZONE	LUMENS	% OF LUMINAIRE
0-40	2005	98.2%
0-60	2039	99.9%
0-90	2041	100%

3" Cylinder (2700K, 90 CRI, 25W) 30° Optic

Polar Plot



Cone of Light Tabulation



VOLTAGE	CURRENT	POWER
120 VAC	0.21A	25W

POWER FACTOR	FREQUENCY	CURRENT THD
0.97	60 Hz	12.84%

Summary of Results

Spacing Criteria	Total Lumen Output:	2364 Lumens
0-180: 0.54	Luminaire Efficacy:	95 lm/w
90-270: 0.54	Maximum Candela:	8391 Candela

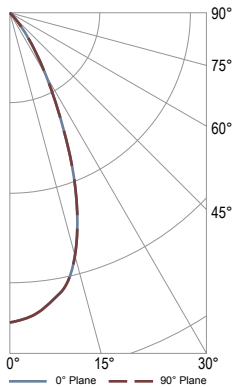
ZONE	LUMENS	% OF LUMINAIRE
0-40	2337	98.8%
0-60	2363	99.9%
0-90	2364	100%

LUXE CYLINDER - FLUSH MOUNT

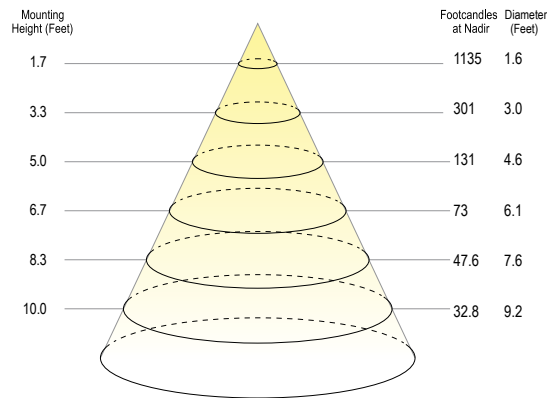
PHOTOMETRICS

3" Cylinder (2700K, 90 CRI, 25W) 50° Optic

Polar Plot



Cone of Light Tabulation



VOLTAGE	CURRENT	POWER
120 VAC	0.21A	25W

POWER FACTOR	FREQUENCY	CURRENT THD
0.97	60 Hz	17.9%

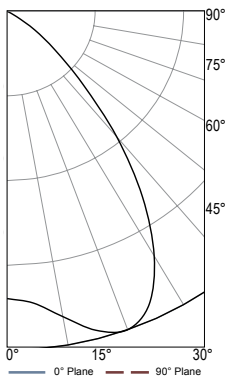
Summary of Results

Spacing Criteria	Total Lumen Output:	2197 Lumens
0-180: 0.82	Luminaire Efficacy:	88 lm/w
90-270: 0.82	Maximum Candela:	3279 Candela

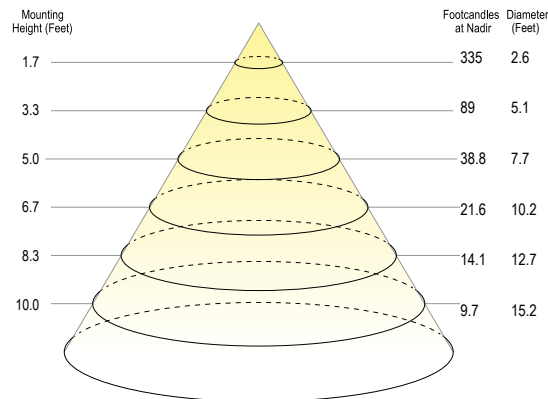
ZONE	LUMENS	% OF LUMINAIRE
0-40	2121	96.6%
0-60	2196	99.9%
0-90	2197	100%

3" Cylinder (2700K, 90 CRI, 25W) 80° Optic

Polar Plot



Cone of Light Tabulation



VOLTAGE	CURRENT	POWER
120 VAC	0.21A	25W

POWER FACTOR	FREQUENCY	CURRENT THD
0.97	60 Hz	12.8%

Summary of Results

Spacing Criteria	Total Lumen Output:	1765 Lumens
0-180: 1.32	Luminaire Efficacy:	71 lm/w
90-270: 1.32	Maximum Candela:	1143 Candela

ZONE	LUMENS	% OF LUMINAIRE
0-40	1379	78.1%
0-60	1754	99.4%
0-90	1765	100%

LUXE CYLINDER - FLUSH MOUNT

DIMMING DRIVER COMPATIBILITY

“S” STANDARD UNIVERSAL DIM

COMPATIBLE PHASE CUT DIMMER	
MANUFACTURER	PRODUCT
Cooper	DAL06P
	DLC03P
	SLC03P
Leviton	6161
	6631-2
	6633-P
	6673-10W
	6683-IW
	IPE04
	IPI06-1LZ
	VPE06
Lightolier	ZP26QEW
Lutron	CT103P
	DV600P
	DVCL-153P
	DVEL303P
	FAELV500
	LG600P
	MAELV600
	S600P
	S-603PG
	SELV300P
	TG-600P
	TGCL-153P

COMPATIBLE 1-10V DIMMER	
MANUFACTURER	PRODUCT
Leviton	IP740-DLZ
Lightolier	ZP600FAM120
	V2000FAMU
Lutron	DVTV
	NTFTV
Crestron	CLS-EXP-DIMFLV
	DIN-4DIMFLV4
	DIN-A08
	GLX-DIMFLV8