

ARTÉS 1200 IP44 CEILING / WALL MOUNTED

Installation Guide



!

Please handle with care and wear gloves at all times during assembly and installation to avoid damaging components.

TECHNICAL

Bulb Holder
integrated LED - dimmable
remote driver

Wattage
48w - 2700k

Weight
8kg (17.6lbs)

PARTS & COMPONENTS

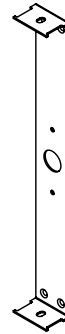
- A. 1 x Artés 1200 Wall
- B. 1 x Wall mounting plate
- C. 2 x Brass masking plates
- D. 2 x Steel button head screws, 4 x Brass countersunk screws
- E. 1 x Remote LED driver
- F. 2 x IP rated driver to fitting connectors

Please note: parts are supplied assembled, disassemble prior to installation.

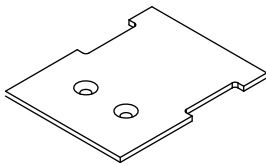
A.



B.



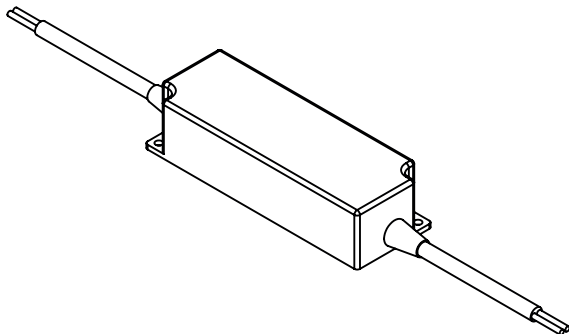
C.



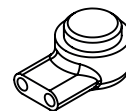
D.



E.



F.

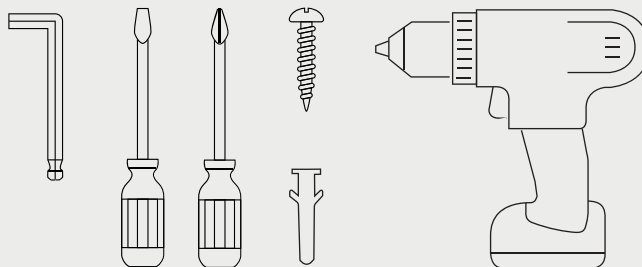


- All nuts and bolts required for the installation will be included in the delivery.



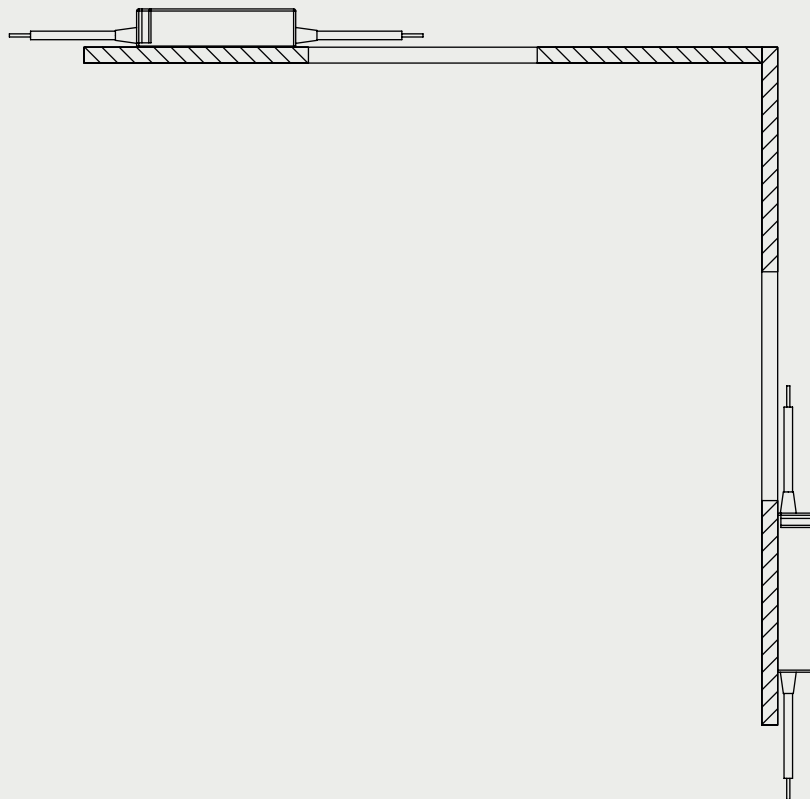
BEFORE INSTALLATION

- Check that you have all components before starting the installation.
 - Installation must be carried out by a qualified electrician.
 - A minimum of two people is required to install a pendant light.
- Check that the ceiling or wall fixings are suitable and strong enough to support the weight of the light fixture.
 - You will need the below specific tools for a successful installation.

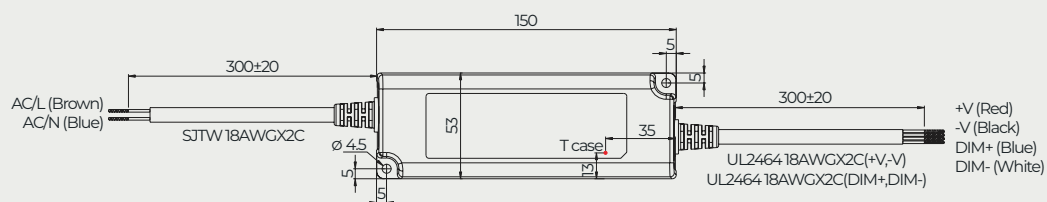


1. The driver must be remotely installed at minimum 100mm away from the light fixture.

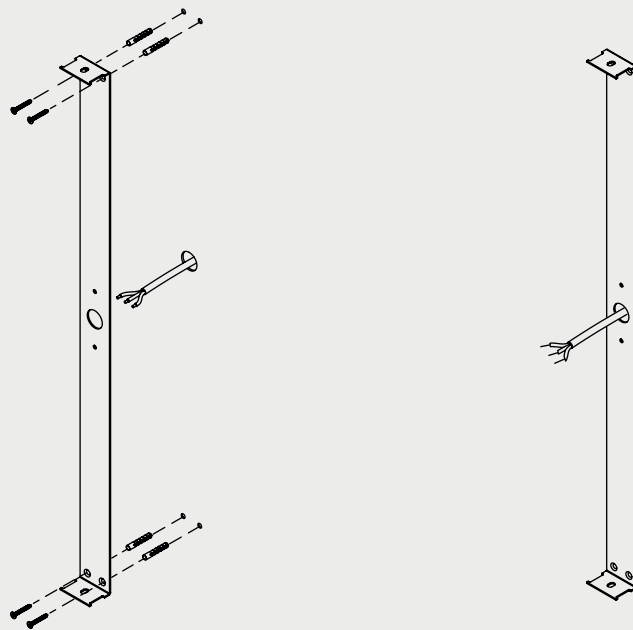
The driver can be mounted either in the wall or ceiling cavity.



1 x Remote driver will be supplied per light, see driver's dimension below

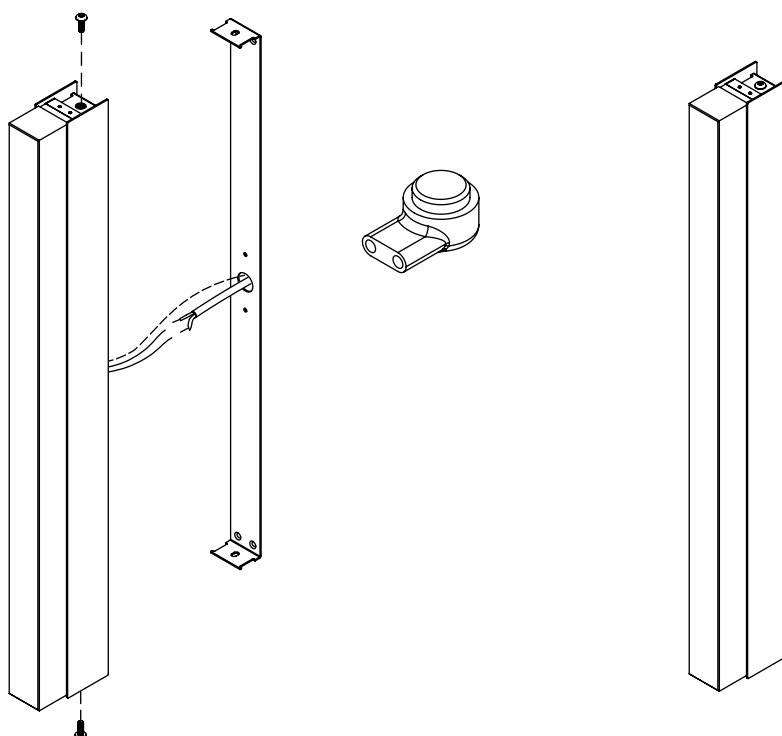


2. Securely fix the mounting plate to the wall in the correct position using fixings suitable for the surface you are mounting to (not supplied).

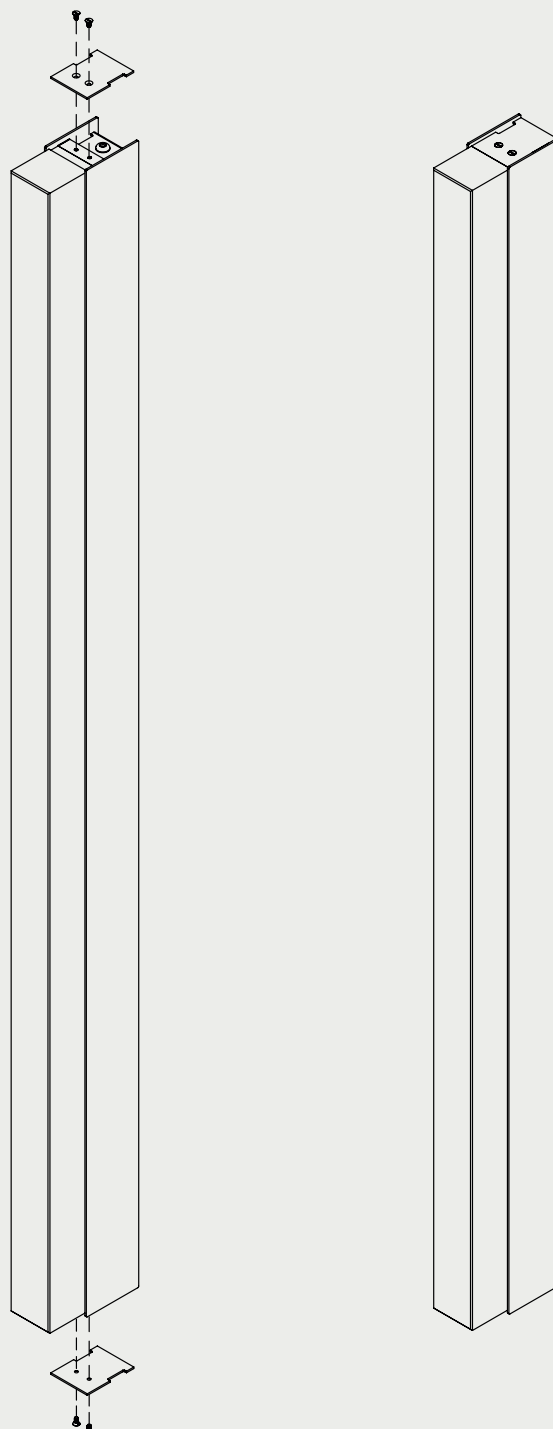


3. Raise the fitting and make the electrical connections ensuring all wires are colour matched and the fitting is earthed correctly. Red = + and Black = -. Use the connectors provided to make the connection.

Bring the fitting up to the mounted plate and secure with the 2 x button head screws.



4. With the fitting securely fixed, fit the brass masking plates with the 4 x brass screws.



MAINTENANCE

Cleaning

Dust using a dry lint-free cloth weekly or as required

Repairs

Contact
CTO Lighting

Warranty

Please visit
[www.ctolighting.co.uk/
pages/f-a-q](http://www.ctolighting.co.uk/pages/f-a-q)
for CTO warranty policy

Certification



240v only