

INSTALLATION INSTRUCTIONS

LED Bedside Lamp

BL-19506

dweLED

CAUTION: To prevent electrical shock, ensure electricity has been turned off at the circuit breaker before beginning.

- Read all instructions before installing.
- System is intended for installation by a licensed electrician in accordance with the National Electrical Code (NEC) and local regulations.
- When handling the fixture, do not apply pressure to the LEDs. Hold the fixture by the base only.
- Retain installation instructions for future maintenance reference.

WARNING: All parts must be used as indicated in these instructions. This product is designed for use only with the supplied parts and/or accessories designated for use by dweLED. Substitution of parts or accessories not designated for use with this product by dweLED could result in personal injury or property damage, and will void the warranty. Contact an authorized dealer or the manufacturer if any parts are damaged or missing.

MAINTENANCE NOTE: Coastal conditions may cause mineral and residue build-up on the fixture. We recommend that customers in coastal areas clean all external surfaces of the fixture once every two weeks with a wet cloth.

MISE EN GARDE: Pour éviter tout choc électrique, assurez-vous que le disjoncteur soit mis hors tension avant de commencer.

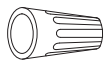
- Lisez toutes les instructions avant l'installation.
- Le système doit être installé par un électricien licencié conformément au code national de l'électricité (NEC), et également aux règlements locaux.
- Lors de la manipulation du luminaire, n'appuyez pas sur les LED. Tenez-le uniquement par la base.

ATTENTION: Toutes les pièces doivent être utilisées comme indiqué dans ces instructions. Ce produit est conçu pour être utilisé seulement avec les pièces et/ou accessoires fournis pour être utilisés avec les produits dweLED. Remplacer des pièces ou accessoires non conçus pour ce produit dweLED pourrait causer des dommages corporels ou matériels et pourrait également causer l'annulation de la garantie. Veuillez contacter un revendeur autorisé ou le fabricant si des pièces manquent ou sont endommagées.

NOTE D'ENTRETIEN: Les conditions côtières peut causer une accumulation de minéraux et de résidus sur le luminaire. Nous recommandons aux clients qui résident dans les zones côtières de nettoyer toutes les surfaces externes du luminaire une fois toutes les deux semaines avec un chiffon humide.

HARDWARE

A



Wire Connector
Qty: 3pcs+1 Extra

B



Mounting Screw
Qty: 1Extra

Wacighting.com
Phone (800) 526.2588
Fax (800) 526.2585

Headquarters/Eastern Distribution Center
44 Harbor Park Drive
Port Washington, NY 11050

Central Distribution Center
1600 Distribution Ct
Lithia Springs, GA 30122

Western Distribution Center
1750 Archibald Avenue
Ontario, CA 91760



INSTALLATION INSTRUCTIONS

LED Bedside Lamp

BL-19506

dweLED

PREPARATION

1. Shut off the power at the circuit breaker and remove existing fixture, including the crossbar.
2. Carefully unpack your new fixture and lay out all the parts on a clear area. Be careful not to lose any small parts necessary for installation.

MOUNTING THE FIXTURE (Fig.1)

3. Remove the mounting screw (B) from the fixture.
 4. Secure the mounting back plate to the junction box using standard junction box screws that comes with the junction box .
- Note :** (i) Using any other non-original-manufacturer provided junction box screw may result in safety issue.
(ii) The side of the mounting plate marked "GND" must face out.
(iii) One screw of the mounting plate must be facing down.

CONNECTING THE WIRES (Fig.2)

5. Connect the driver's input wires to junction box wires as shown in Fig. 2, making sure that all wire connectors (A) are secured. If your outlet box has a green or bare copper ground wire, connect the fixture's ground wire to it. Otherwise, connect the fixture's ground wire directly to the back plate using the GND screw provided. After wires are connected, tuck them carefully inside the junction box.

COMPLETING THE INSTALLATION

6. Mount the fixture against the mounting plate and secure using the back plate screws (B) .
 7. Short press button "1" to control the light on or off.
 - (i) When the normal light is on, double click the button quickly to switch the color temperature. Every double click of the button to switch the color temperature once, the color temperature is 2700k, 3000k, 3500k, 4000k, and the color temperature adjustment is cyclic adjustment.
 - (ii) Hold down the button, you can adjust the brightness of the lamp, the brightness adjustment range is 100%-1%; Regardless of the brightness, the brightness will return to 100% after each change of color temperature.
- Note:** When the first adjustment brightness change is from strong to weak, the next adjustment will become from weak to strong, unless the color temperature is changed, otherwise the adjustment brightness change is always opposite to the last time.
- (iii) Turn on the light again after the light is turned off, and it will remember the color temperature and brightness level before the light is turned off, whether the switch is turned off or the power is turned off .
8. You can adjust the lamp head as shown in Fig.1, with a maximum adjustment angle of 350°, to achieve the best lighting effect. Whether the switch is on or not, both the USB (5V/1A) and Tpye-C (5V/1A) components can be used for charging.

Fig. 1

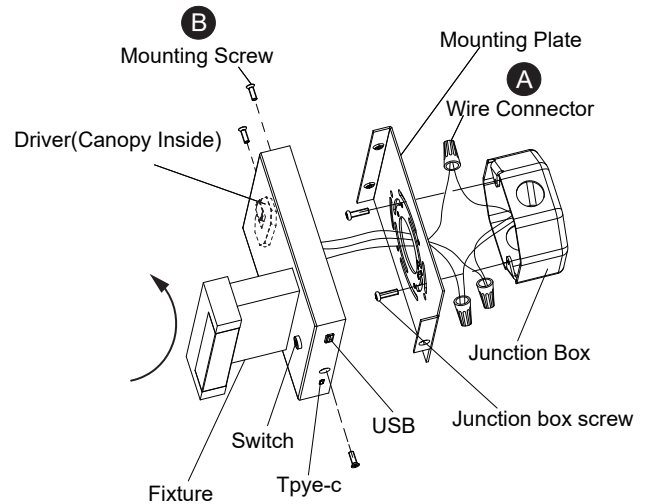

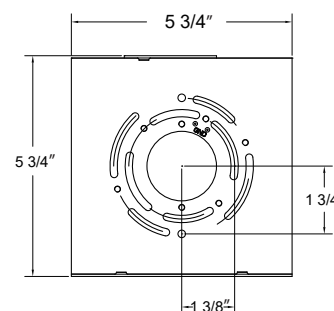


Fig. 2 Wiring

	Fixture Wires Black or Smooth	House Wires Black (Hot)
	Fixture Wires White or Ribbed	House Wires White (Neutral)
	Fixture Wires Bare wire (Ground)	House Wires Green or Bare Copper (Ground)

Mounting Plate



Wacighting.com
Phone (800) 526.2588
Fax (800) 526.2585

Headquarters/Eastern Distribution Center
44 Harbor Park Drive
Port Washington, NY 11050

Central Distribution Center
1600 Distribution Ct
Lithia Springs, GA 30122

Western Distribution Center
1750 Archibald Avenue
Ontario, CA 91760

