

ALFI SOFT FABRIC SELECTION



emeco

Alfi Soft is an upholstered slipcover with a structured foam cushion that slips over the seat and fits tight and secured once dressed. Designed to be retrofitted and removed when needed. Suitable for Alfi chairs and stools. Not suitable for the Alfi armchair or benches.

Upholstery: Curated fabric selection by Emeco.

Full color range of Maharam Mode, Kvadrat Divina Melange and Spinneybeck Volo also available at no upcharge, as well as COM/COL.

For details, please [contact us](#).

COM/COL:

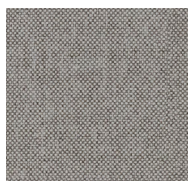
Fabric required: 1.5 yd / 1.4m for high back, 1 yd / 0.9m for low back.

Leather required: 16sq ft / 1.5sqm for high back, 13sq ft / 1.2sqm for low back.

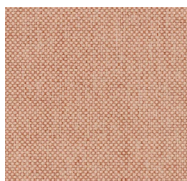


MAHARAM MODE

78% Post-industrial recycled, 15% Polyester, 7% Nylon



008 - SYCAMORE



021 - BLUSH

Designed by Maharam

Application: Seating

Composition: 80% Post-Consumer Recycled Polyester, 20% Polyester

Abrasion: 100.000 Double Rubs

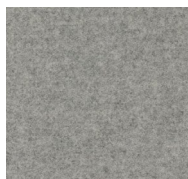
Lightfastness: 6-7

Flame Test: US Cal. Bull. 117-2013. NFPA 260.

Care: Please check [manufacturers website](#) for full care details.

KVADRAT DIVINA MELANGE 3

100% Wool



0120



0170

Designed by Finn Sködt

Application: Seating

Composition: 100% New wool

Abrasion: 45.000 Martindale

Lightfastness: 6

Flame Test: AS/NZS 1530.3. BS 5852 Crib 5. BS 5852 part 1. BS 5867 part 2 type B. EN 1021-1/2. EN 13501, C-s1, d0, glued. IMO FTP Code 2010 Part 8. NF D 60 013. NFPA 260. SN 198 898 5.3 with treatment. UNI 9175 1IM. US Cal. Bull. 117-2013. ÖNORM B1/ Q1. BS 5852 ignition source 3

Care: Please check [manufacturers website](#) for full care details.

SPINNEYBECK

Leather



VOLO 0945 - TAN



VOLO BLCK - BLACK

Designed by Spinneybeck

Application: Seating

Composition: 100% Leather

Abrasion: N/A

Lightfastness: 4

Flame Test: ASTM E 84. Boston Fire Dept BFD IX-1. BS EN1021. BS 5852 Crib 5 and Crib 7. CAL 117. CAL 133. Cigarette Ignition Resistance NFPA 260. FAR 25.853(a) 60 sec vertical burn, 12 sec vertical burn. Oil burner-fire block. IMO Resolution A.652(16). IMO Resolution A.653(16) Part 2 and 5. NF P 95 512 1986 (Electric Burner Test).

Care: Please check [manufacturers website](#) for full care details.



Alfi chairs with Alfi Soft upholstered slipcovers in Kvadrat Divina MD fabric at WAW/Fabege, Stockholm.
By: Egnell Allard. Photo: Magnus Anesund



www.emeco.net

805 WEST ELM AVENUE, HANOVER PENNSYLVANIA 17331 USA, TELEPHONE + 1 717 637 5951, USA CALL TOLL FREE 800 366 5951, E-MAIL: INFO@EMECO.NET