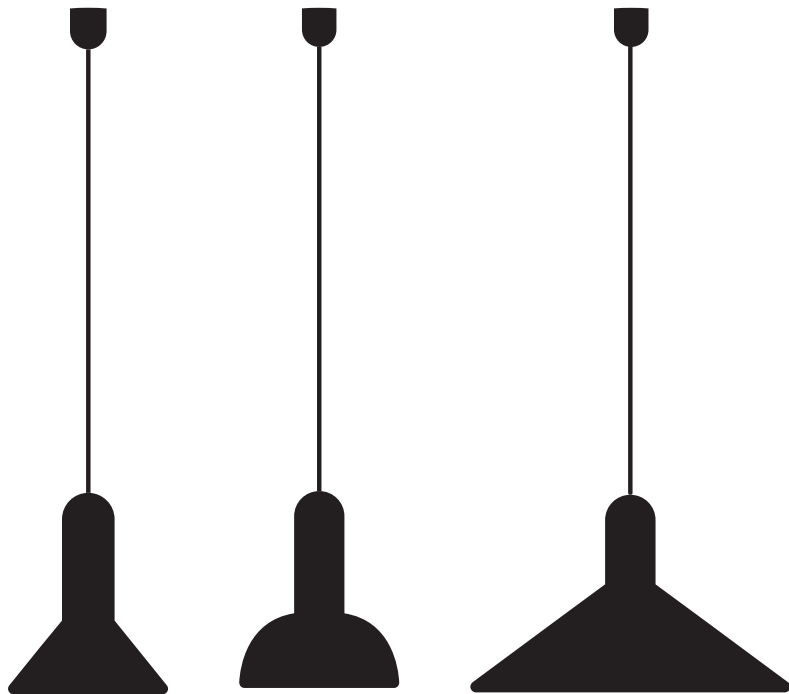


TORCH SUSPENSION

Sylvain Willenz



User Instructions

Design 2008
Description Suspension light
Light Emission Direct
Light fitting

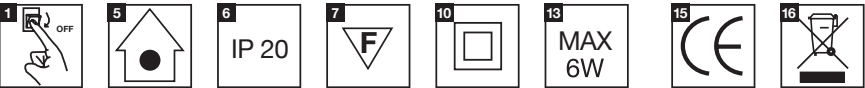
S1 cone Ø150: E14, 1× 6W LED, 220/240V, PVC cable
S2 round Ø150: E14, 1× 6W LED, 220/240V, PVC cable
S3 cone Ø300: E14, 1× 6W LED, 220/240V, PVC cable

Dimensions
S1 cone Ø150: Ø150mm × H210mm, cable L2000mm, 0.6kg
S2 round Ø150: Ø150mm × H210mm, cable L2000mm, 0.6kg
S3 cone Ø300: Ø300mm × H205mm, cable L2000mm, 0.8kg

Materials
PVC dipped polymer shade and ceiling fixing, clear diamond textured polycarbonate diffuser
Compliant CE marking
Colours
Black with black cable, black with red cable, cocoa grey with red cable, red with red cable, signal grey with red cable, signal grey with yellow cable

Cleaning Guidelines
ATTENTION! Ensure the electrical supply is switched off before cleaning.
ATTENTION! Clean electrical parts with a soft dry cloth only.
To clean the lamp please use a soft, damp cloth or a duster, avoiding any abrasives or solvents.

Before installation please read the IMPORTANT INFORMATION located at the back of this document.



Electrical Connection

ATTENTION! Unless the fitting is being wired to the end of a spur wire, you must loop the wiring into a suitable junction box that can be concealed in the ceiling void, and run a wire from the junction box to the new fitting.

1
Connect the switched live conductor of your house wiring, normally Brown or Red to the live terminal or wire, which is marked “L” or “Live” and/or coloured Brown.

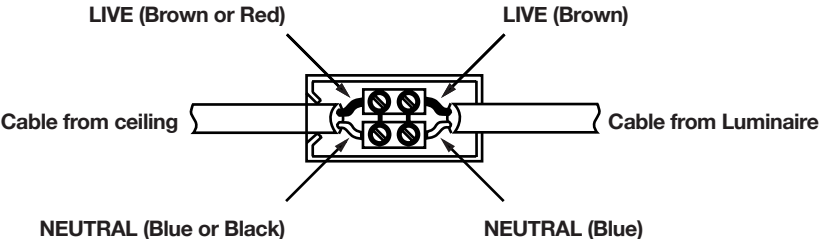
2
Connect the neutral conductor of your house wiring, normally Blue or Black to the neutral terminal or wire which is marked “N” or “Neutral” and/or coloured blue.

3
Double check all the connections are secure and that no loose strands of wire are omitted from the connector terminals.

4
Check that no wires are trapped behind or within the fitting.

5
Close the cover on the terminal block.

6
Pull the ceiling rose in position



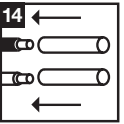
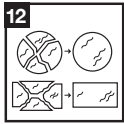
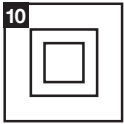
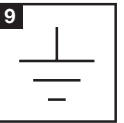
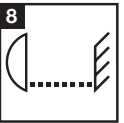
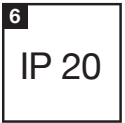
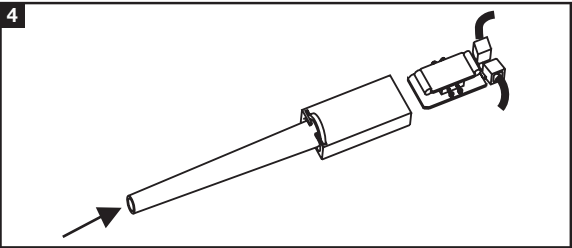
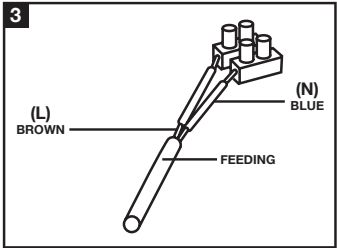
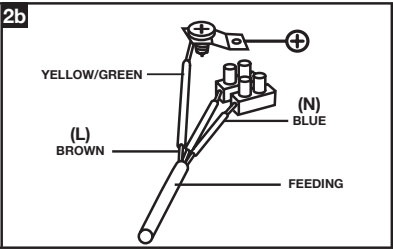
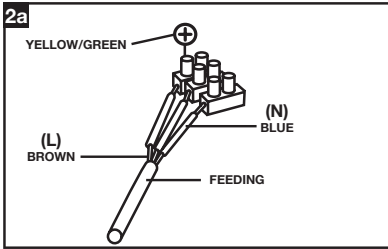
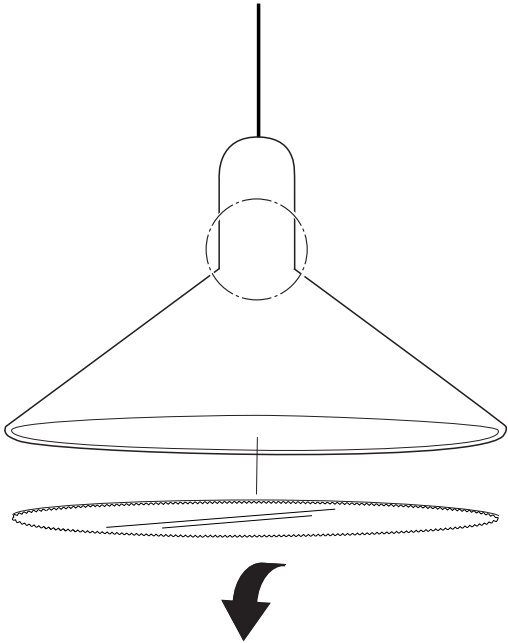
Replacing the Bulb

ATTENTION! Ensure the electrical supply is switched off before beginning the installation.
Only use LED type bulbs in this suspension light.

1
Remove the diffuser from the torch by gently pulling back the rubber shade, and remove the old bulb by unscrewing it (anti-clockwise) while squeezing the bulb holder through the rubber shade.

2
Screw in the new bulb (clockwise) while squeezing the bulb holder through the rubber shade.

3
Replace the diffuser, ensure it sits in the groove on the inside of the shade.



Important Information

ATTENTION! The safety and the functioning of the luminaire is guaranteed only by observing the following safety/mounting instructions. Please keep for future use.
ATTENTION! We recommend consulting a qualified person for the installation of the luminaire.
ATTENTION! Clean the luminaire by using a dry cloth, avoiding any abrasives or solvents. Do not put liquid on the electrical components.

Pic. 1: ATTENTION! Before starting the installation of the luminaire, turn off the main electrical supply.
Pic. 2A & Pic. 2B: These drawings show how to carry out the electrical connection when the luminaire is in Class 1 (according to versions). Please pay attention and observe the correct cable colour during wiring operations: Blue (N), Brown or Black (L), Yellow/Green (Earth Circuit).
Pic. 3: This drawing shows how to carry out the electrical connection when the luminaire is in Class 2. Please pay attention and observe the correct cable colour during wiring operations: Blue (N), Brown or Black (L).
Pic. 4: This drawing shows a connection box of a Class 2 light. Open the box, make the connection of the power supply to the terminal then close it.
Pic. 5: Use indoor only
Pic. 6: This drawing shows the type of protection the luminaire is equipped against for the entry of solid bodies (1st number) and liquids (2nd number). See the list below:
- IP1.. Protected against the entry of solid bodies with dimensions equal/bigger than 50mm
- IP2.. Protected against the entry of solid bodies equal/bigger than 12mm
- IP3.. Protected against the entry of solid bodies equal/bigger than 2.5mm
- IP4.. Protected against the entry of solid bodies equal/bigger than 1mm
- IP5.. Protected against the entry of dust
- IP6.. Completely protected against the entry of dust
- IP.0 Unprotected
- IP.1 Protected against the dropping of water
- IP.2 Protected against the falling of water drops with a maximum angle of 15°
- IP.3 Protected against rain
- IP.4 Protected against water sprinkling
- IP.5 Protected against water jets
- IP.6 Protected against heavy waves
- IP.7 Watertight to immersion
- IP.8 Watertight to submersion
Pic. 7: Luminaire suitable to be fixed on flammable surfaces.
Pic. 8: This drawing shows the minimum distance that must be respected between the luminaire and the light source.

Pic. 9, Pic. 10 & Pic. 11: These drawings show the Class of the luminaire, i.e. the type of protection provided against electrical shock. See the list below:
- Class 1: Protection is guaranteed by the insulation of the main system and by the constant connection of the metal parts to the earth circuit.
- Class 2: Protection is guaranteed by the double insulation of parts that carry current.
- Class 3: Protection is guaranteed by the feeding of luminaire with a very low voltage.
Pic. 12: This drawing shows that the luminaire contains a protective glass shield (round or square according to the versions). If broken or damaged, please have it immediately replaced. Don't use replacement parts not approved by the manufacturer.
Pic. 13: This drawing shows the maximum wattage to be used with the luminaire. Don't use bigger lamp wattage.
Pic. 14: This drawing shows how to apply the heat resistant sleeves, provided with the luminaire.
Pic. 15: This drawing states the conformity of the luminaire to the standards prescribed by the European regulation EN60598.
Pic. 16: The luminaire or any part of it must not be thrown in the domestic garbage.
Pic. 17: This drawing shows that the luminaire contains some parts that could be very hot when the light is on. Please arrange any adjustment only when the luminaire is switched off (and cold).

This appliance is marked according to the European directive 2002/96/EC on Waste Electrical and Electronic Equipment (WEEE) and according to Directive 2006/66/EC on batteries and accumulators and on waste batteries and accumulators and repealing Directive 91/157/EEC. By ensuring this product is disposed of correctly, you will help prevent potential negative consequences for the environment and human health, which could otherwise be caused by inappropriate waste handling of this product. The symbol on the product indicates that this product may not be treated as household waste. Instead it shall be handed over to the applicable collection point for the recycling of electrical and electronic equipment. Disposal must be carried out in accordance with local environmental regulations for waste disposal. For more detailed information about treatment, recovery and recycling of this product, please contact your local city office, your household waste disposal service or the shop where you purchased the product.

Important Notice

General installation
Always use a qualified electrician for the installation of the fitting.

Ensure that the electrical supply is OFF. Disconnect the electrical supply at the consumer unit/fuse board. Switching off at the wall is not adequate.

Unless otherwise marked/illustrated the fitting is for use in a normal dry domestic indoor environment. Suitable for mounting on non-combustible surfaces only.

If removing an existing fitting first, note all wiring connections: record which of the house wires is connected to which terminal.

Carefully identify where the supply cable is, and check there are no other cables in the area to avoid damage to concealed wiring during installation.

Position the light where desired ensuring that the area is suitable to support the weight of the luminaire.

Determine the fixing method appropriate to the ceiling material. Use fixings that are suited to the ceiling material and are sufficiently strong to support the weight of the luminaire.

It may be necessary to orientate the fitting in a particular way so that heat is dispersed. Check the fitting and/or illustrations.

If the external flexible cable or cord of this luminaire is damaged it shall be exclusively replaced by the manufacturer or their service agent or similar qualified person.

Wiring Specification

This luminaire is fitted with a EU specification cable flex.

The colours of the live, neutral and earth wires may vary from the country you are installing the luminaire.

The luminaire is supplied with a two pole terminal.

Established & Sons
WeWork, 1 Primrose Street
London, EC2A 2EX
United Kingdom
Phone +44 (0)20 7608 0990
establishedandsons.com

