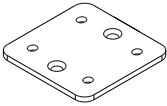
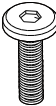
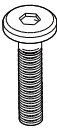




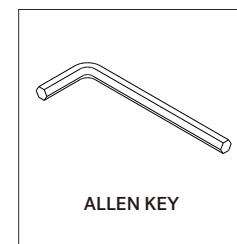
## PI DINING TABLE

### ASSEMBLY INSTRUCTIONS FOR DINING TABLE INSTALLATION

#### HARDWARE ENCLOSED

|   |   |   |
|---|---|---|
|   |  |  |
| METAL PLATE<br>4pcs   | JCBC SCREW<br>M6x25mm<br>24pcs  | JCBC SCREW<br>M6x50mm<br>4pcs   |
|  |  |   |
| WASHER<br>M6x13mm<br>20pcs  | SPRING WASHER<br>M6<br>20pcs  |   |

#### TOOLS ENCLOSED

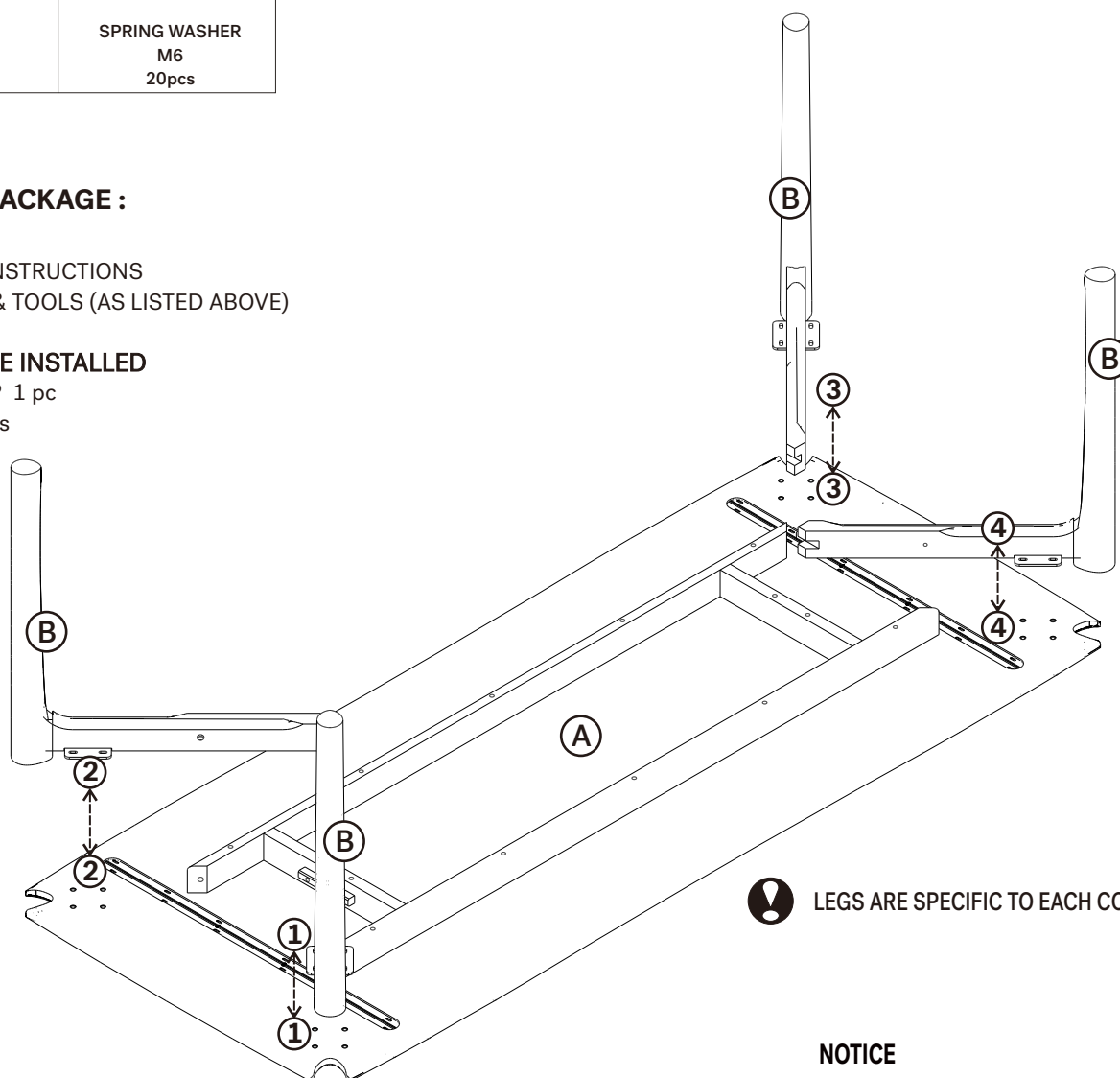


#### IN YOUR PACKAGE :

ASSEMBLY INSTRUCTIONS  
HARDWARE & TOOLS (AS LISTED ABOVE)

#### PARTS TO BE INSTALLED

- A. TABLE TOP 1 pc  
B. LEGS 4 pcs

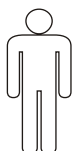


! LEGS ARE SPECIFIC TO EACH CORNER

#### SYMBOLS



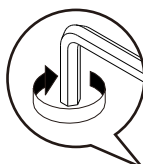
DIRECTION



NUMBER OF  
PERSONS NEEDED

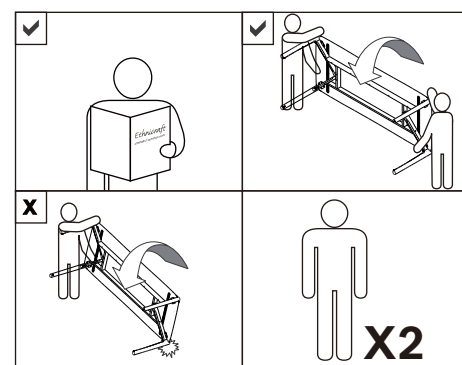


USE HAND

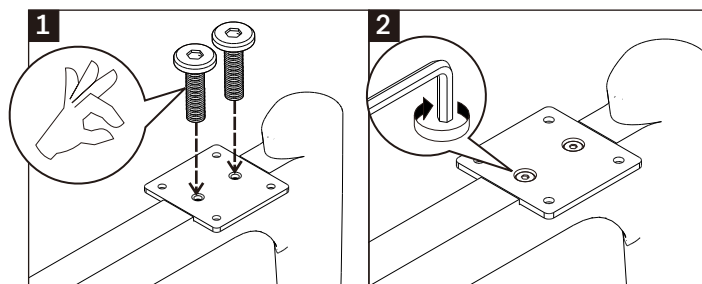
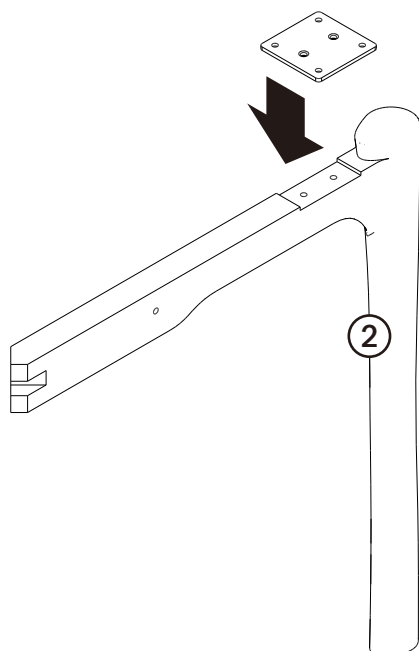


USE ALLEN KEY  
TO TIGHTEN

#### NOTICE

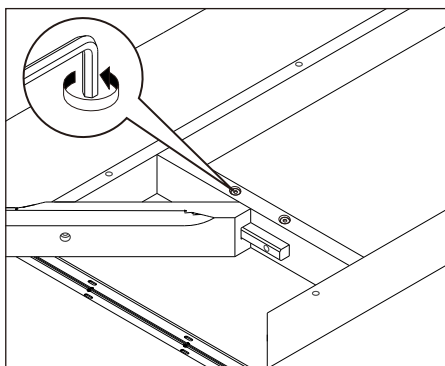


#### A INSTALLING METAL PLATE TO LEG

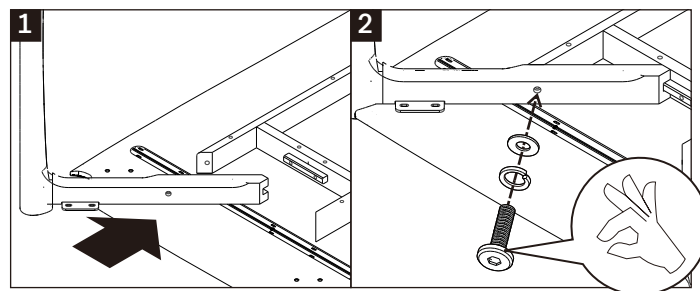


- USE METAL PLATE (4X)
- USE JCBC SCREW M6x25 (8X)
- TIGHTEN SCREWS FULLY

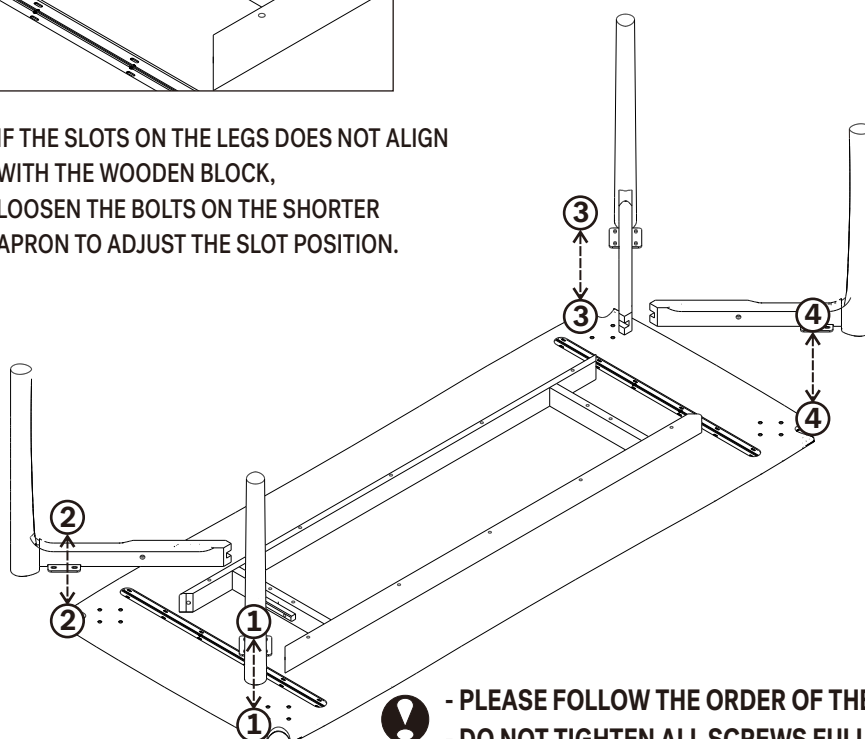
#### B INSTALLING LEGS TO TABLE TOP



! IF THE SLOTS ON THE LEGS DOES NOT ALIGN WITH THE WOODEN BLOCK, LOOSEN THE BOLTS ON THE SHORTER APRON TO ADJUST THE SLOT POSITION.

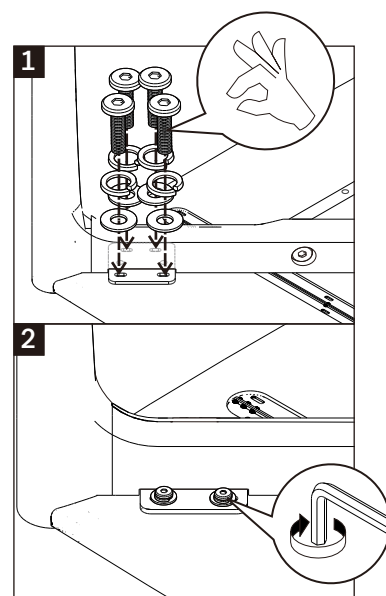
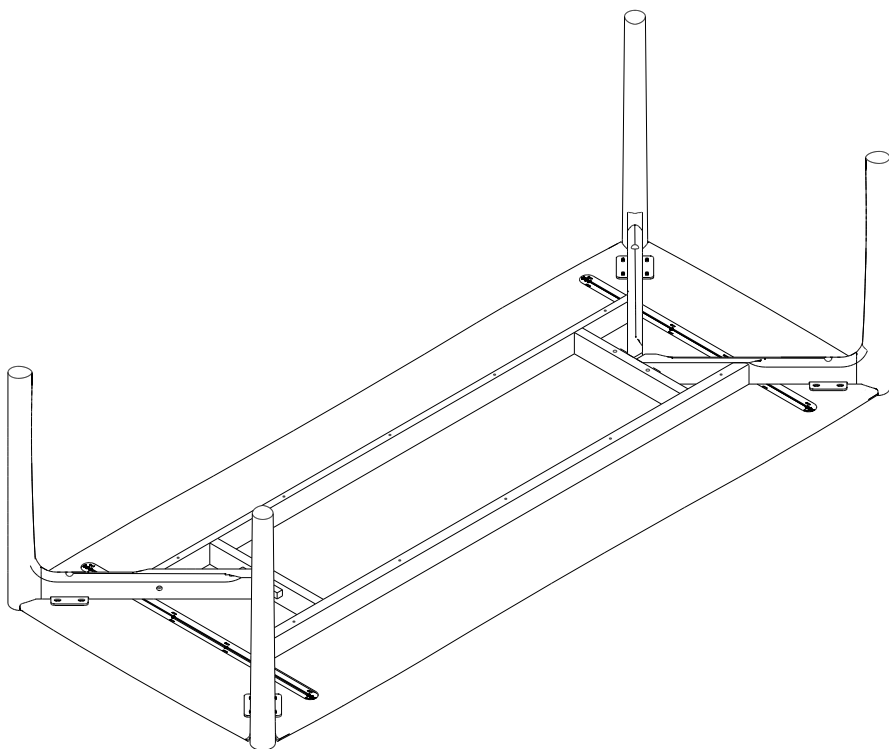


- USE JCBC SCREW M6x50 (4X)
- USE WASHER M6x13 (4X)
- USE SPRING WASHER M6 (4X)



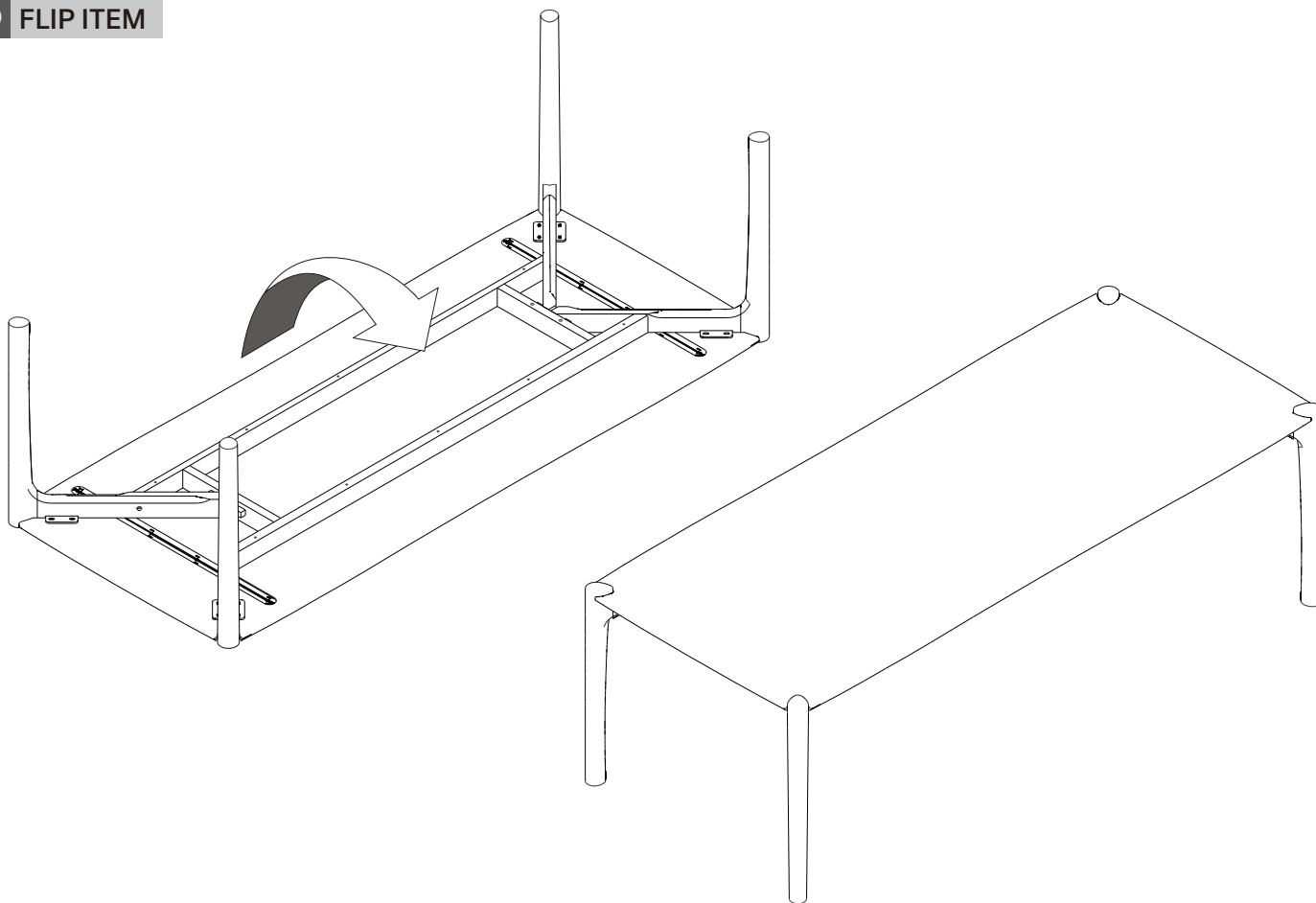
- ! - PLEASE FOLLOW THE ORDER OF THE NUMBERS AS DISPLAYED
- DO NOT TIGHTEN ALL SCREWS FULLY UNTIL THE FINAL STEP

## C INSTALLING METAL PLATE SCREWS

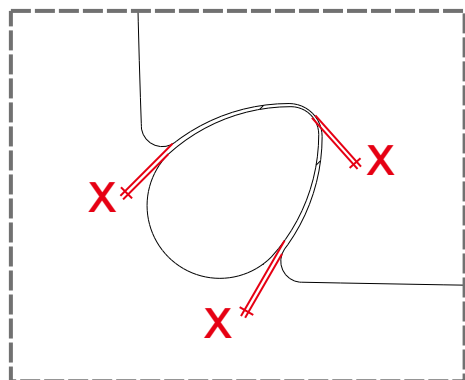


- USE JCBC SCREW M6x25 (16X)
- USE WASHER M6x13 (16X)
- USE SPRING WASHER M6 (16X)
- DO NOT TIGHTEN SCREWS FULLY

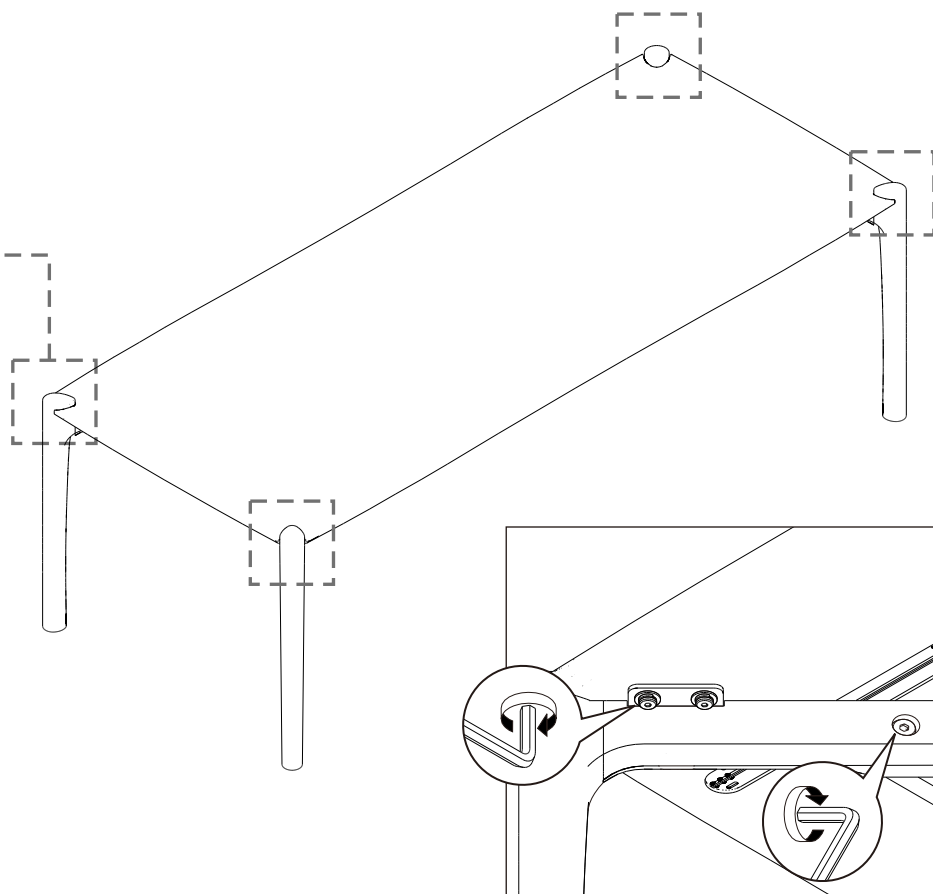
## D FLIP ITEM



## E TIGHTEN ALL SCREWS

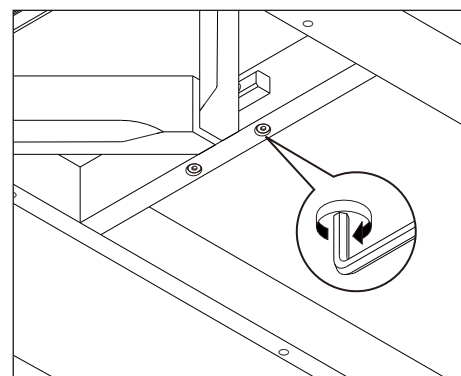
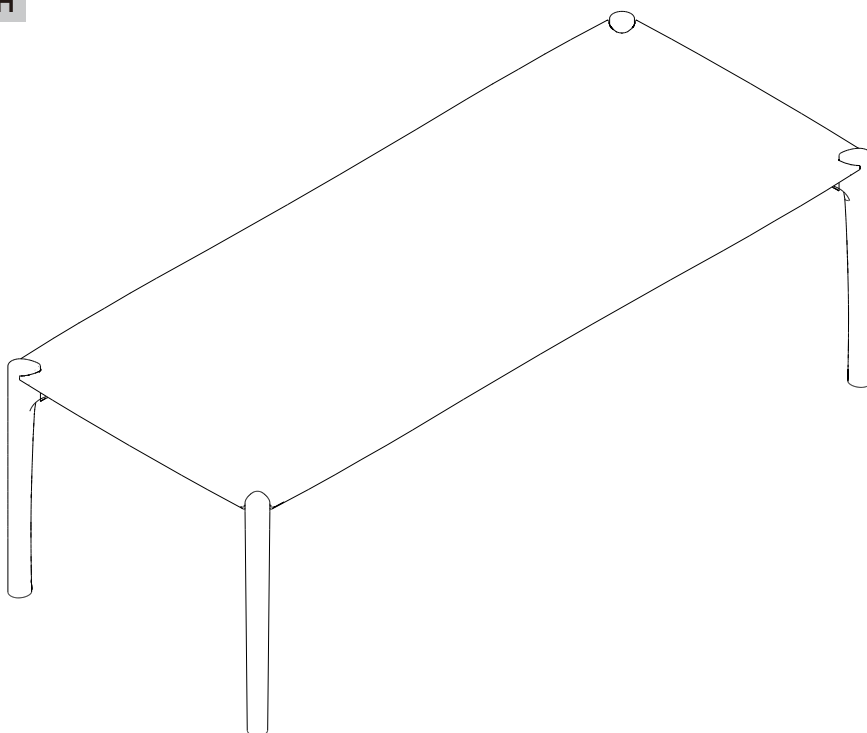


⚠ MAKE SURE THESE ARE CENTERED BEFORE TIGHTENING THE SCREWS



⚠ FULLY TIGHTEN ALL SCREWS ON THE LEGS TO THE TOP PANEL & APRON

## F FINISH



⚠ TIGHT BACK THE BOLTS IN SHORTER THE APRON IF PREVIOUSLY LOOSENED