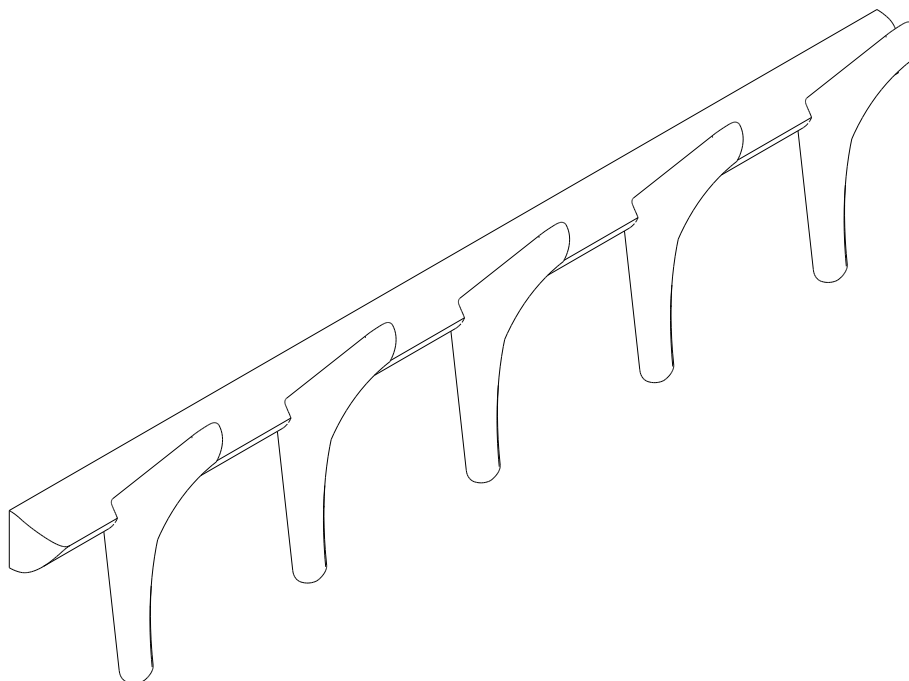




### PI WALL COAT RACK

CODE	DESCRIPTION
29782	MAHOGANY PI WALL COAT RACK DARK BROWN 70/10/21
29872	SYCAMORE PI WALL COAT RACK VARNISHED 70/10/21



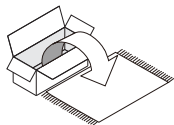
# Ethnicraft

## PI WALL COAT RACK

### ASSEMBLY INSTRUCTIONS FOR WALL COAT RACK INSTALLATION



#### NOTE



CAREFULLY OPEN THE CARTON, REMOVE CONTENTS AND LAY OUT ON CARPET OR THE PACKAGING CARTON BOX OR OTHER PROTECTIVE SURFACE TO AVOID DAMAGE.



CHECK PACKAGE CONTENTS TO ASSURE ALL THE NECESSARY HARDWARE AND PARTS ARE RECEIVED UNDAMAGED. DO NOT USE DAMAGED OR DEFECTIVE PARTS/ HARDWARE. CONTACT ETHNICRAFT FOR ANY MISSING PART AND OR HARDWARE.



**X1**

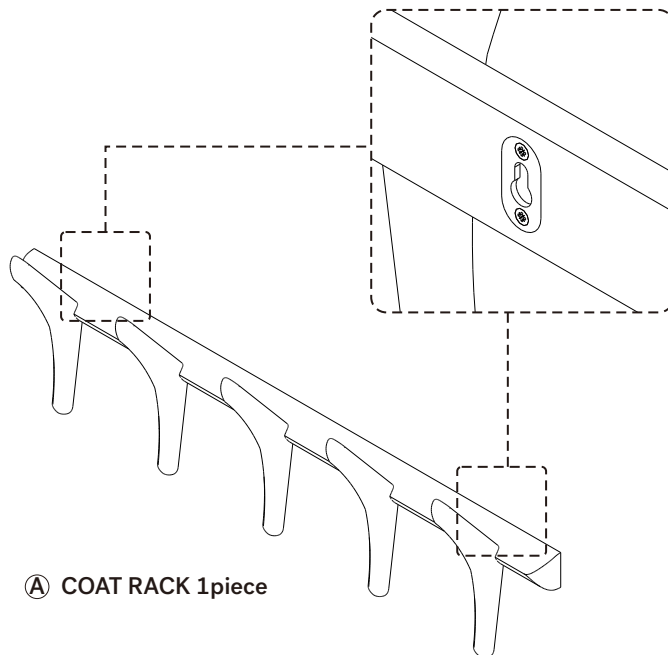
READ THE ASSEMBLY INSTRUCTIONS BEFORE INSTALLATION AND CAREFULLY FOLLOW THE GIVEN INSTRUCTIONS. SEEK THE ADVICE OF A PROFESSIONAL IF YOU ARE NOT FAMILIAR WITH THIS INSTALLATION OR HAVE ANY DOUBTS ABOUT ITS SAFETY.

IT IS ADVISABLE TO DO THIS ASSEMBLY WITH MINIMUM OF 1 PERSON.

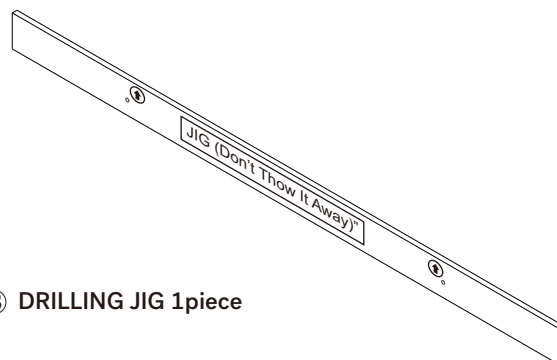


MAXIMUM LOAD PER HANGER IS 5 KG

#### PARTS TO ASSEMBLE



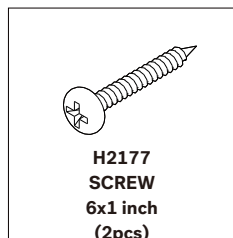
**A** COAT RACK 1piece



**B** DRILLING JIG 1piece

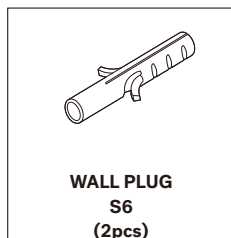
#### HARDWARE ENCLOSED

(Included in packaged)



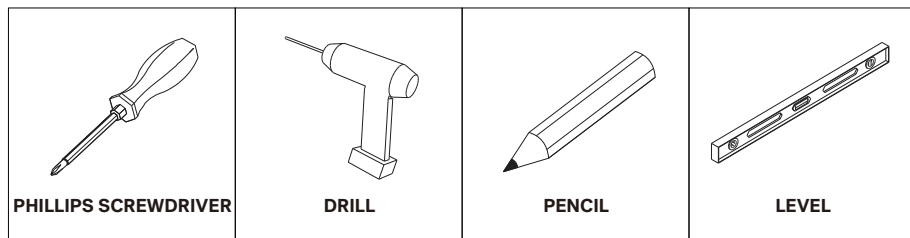
#### HARDWARE REQUIRED

(Not included in packaged)



#### TOOLS REQUIRED

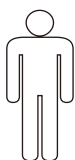
(Not included in packaged)



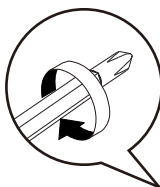
#### SYMBOLS



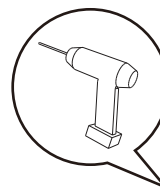
DIRECTION



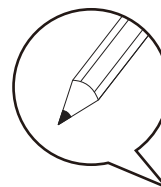
NUMBER OF  
PERSONS NEEDED



USE PHILLIPS SCREWDRIVER  
TO TIGHTEN

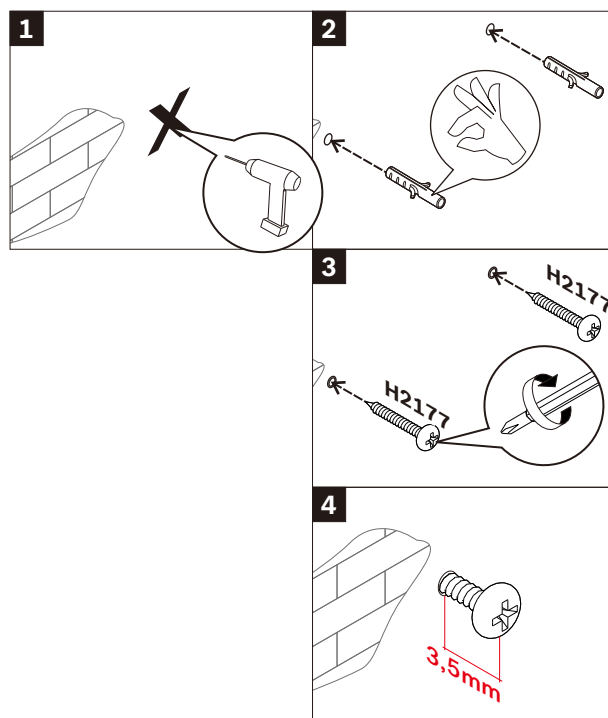
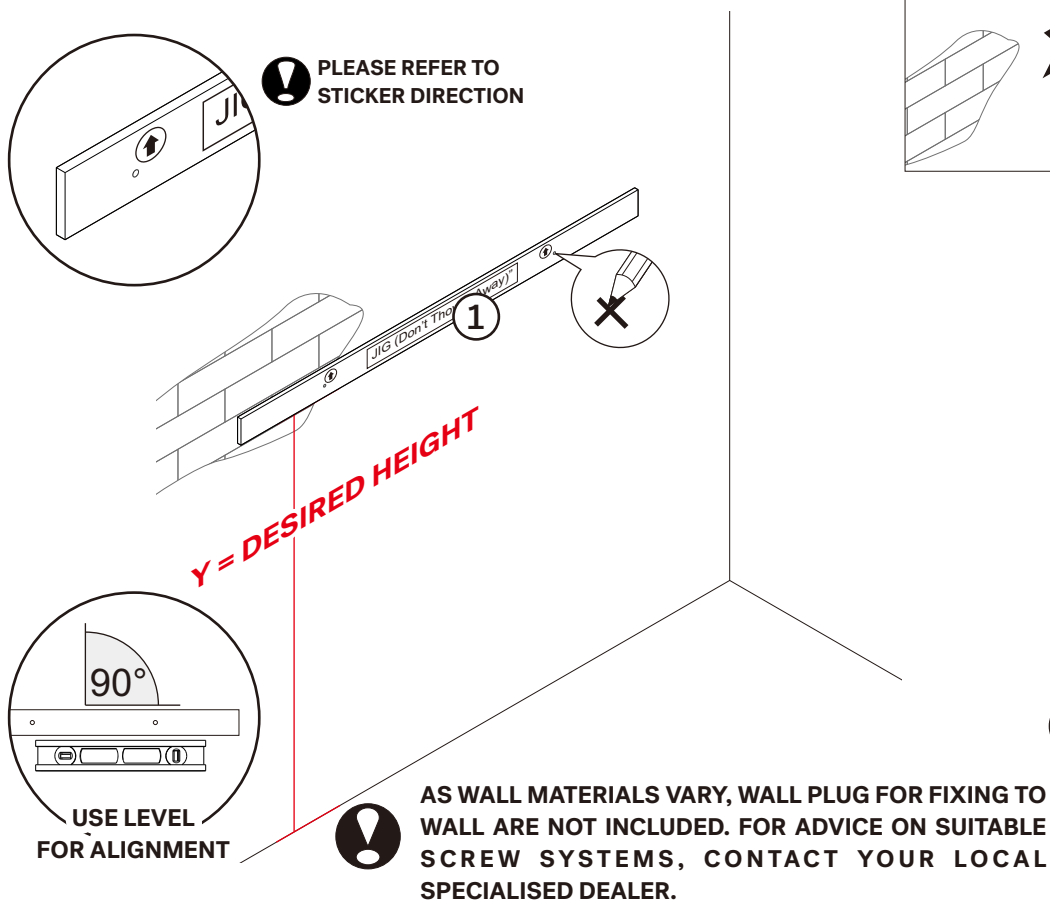


USE  
DRILL



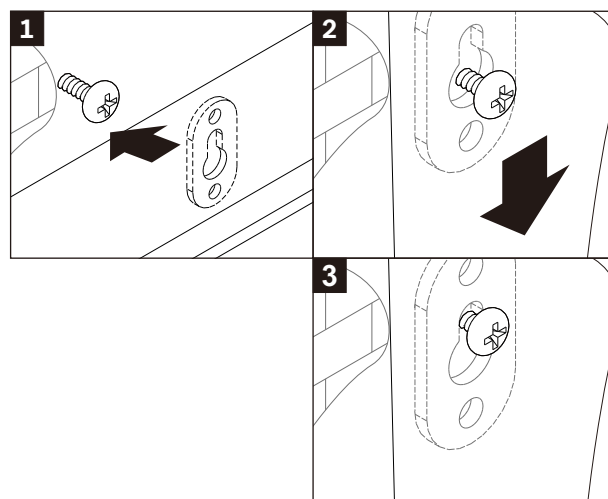
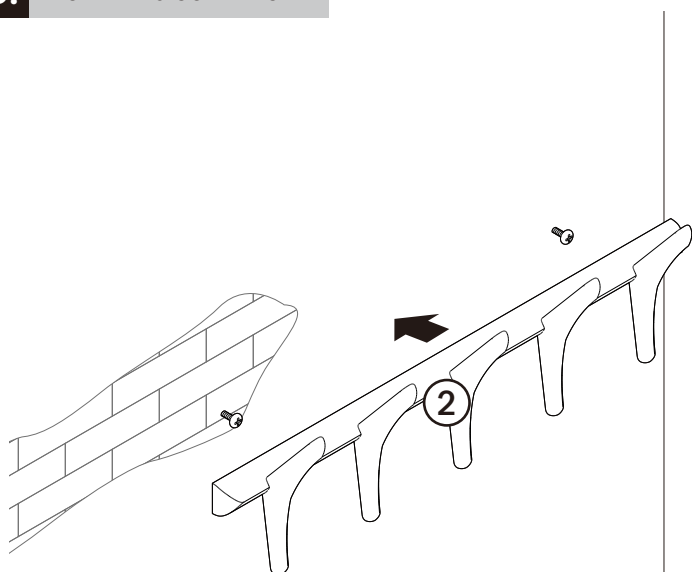
USE PENCIL

## A. INSTALLING SCREWS INTO THE WALL



- USE WALL PLUG S6 (2X)
- USE SCREW 6x1 inch (2X)
- LEAVE A GAP OF  $\pm 3.5\text{mm}$  BETWEEN THE SCREW AND THE WALL.

## B. INSTALLING COAT RACK



- AFTER ASSEMBLY, THERE SHOULD BE NO GAP BETWEEN THE WALL AND THE HANGER.
- IF A GAP IS FOUND, TIGHTEN THE SCREW FURTHER TO MINIMIZE IT.