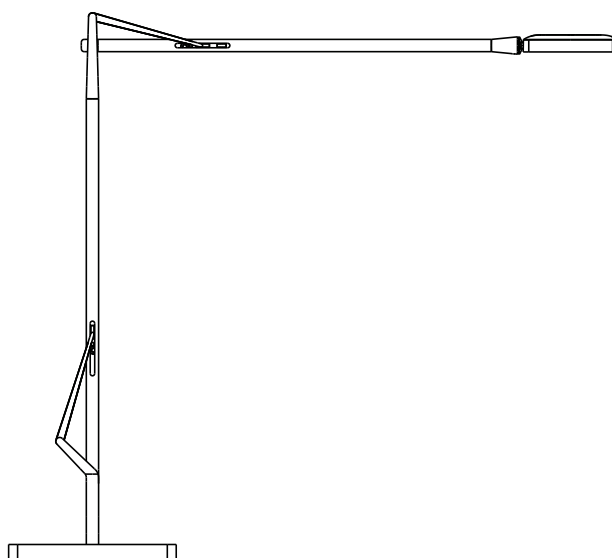


## KELVIN EDGE

Designed by Antonio Citterio, 2015

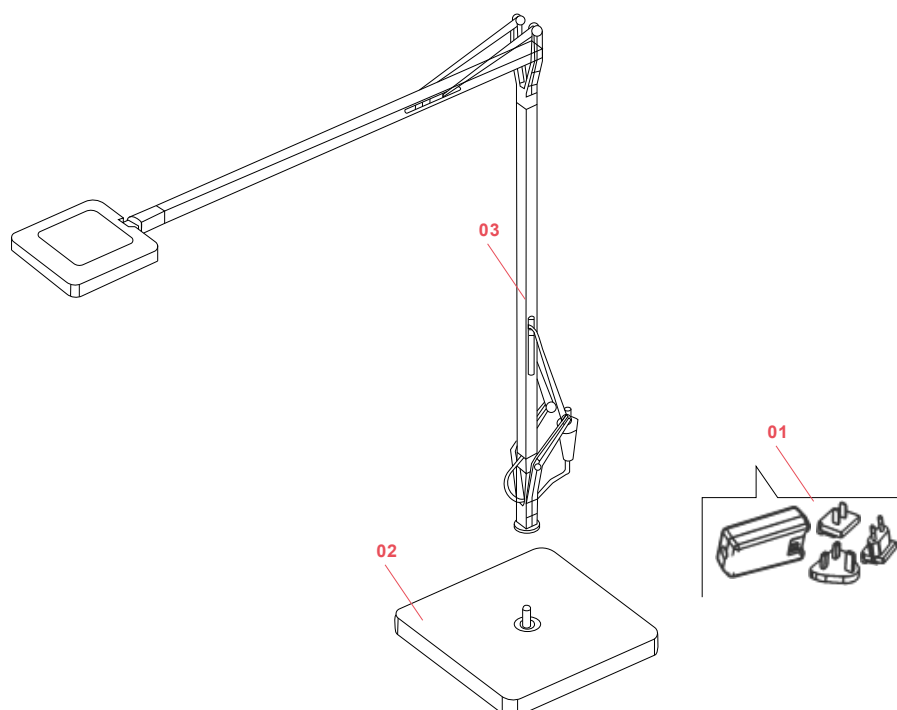
F3452057



## KELVIN EDGE

F3452057

EN



**01. RF3320200** – White plug kit & driver

**02. F3451057** – Kelvin edge chrome base

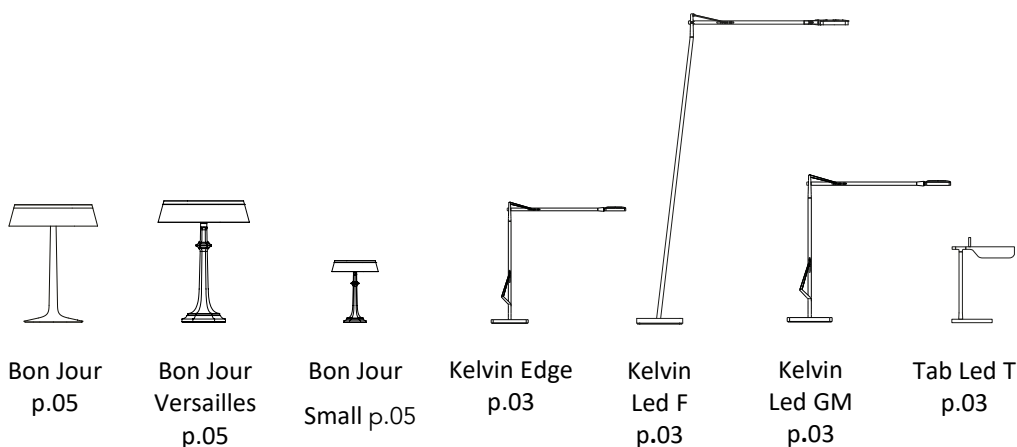
**03. F3450057** – Kelvin edge chrome body

KELVIN EDGE F3452057

EN

## RF3320200

WHITE PLUG KIT & DRIVER



**WARNING!** When installing and whenever acting on the appliance, ensure that the power supply has been switched off.  
For the installation of the spare-part, it is necessary to consult a qualified electrician.

KELVIN EDGE F3452057

EN

**RF3320200**

WHITE PLUG KIT &amp; DRIVER

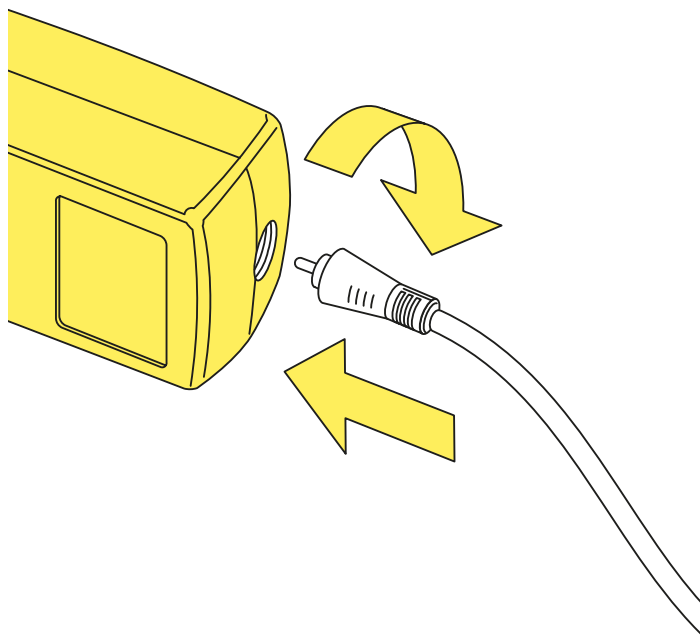


Fig.1

Insert the plug into the driver unit by using the guides snap it inside its apposite slot (use the correct type of plug for the area in which the device must be installed), connect the plug to the feeder unit locking it in by rotating it 90° clockwise.

WARNING! When installing and whenever acting on the appliance, ensure that the power supply has been switched off.  
For the installation of the spare-part, it is necessary to consult a qualified electrician.

KELVIN EDGE F3452057

EN

## F3451057

KELVIN EDGE CHROME BASE



WARNING! When installing and whenever acting on the appliance, ensure that the power supply has been switched off.  
For the installation of the spare-part, it is necessary to consult a qualified electrician.

©2021 Flos - All rights reserved - [www.flos.com](http://www.flos.com)  
Flos reserves the right to introduce any changes to its own models, without prior notice.

KELVIN EDGE F3452057

EN

**F3451057**

KELVIN EDGE CHROME BASE

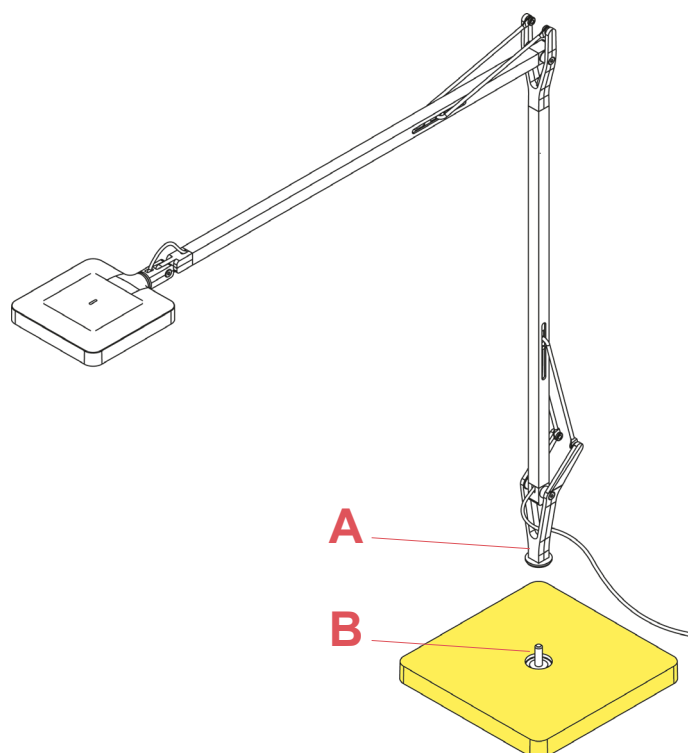


Fig.1

Insert the support (A) of the device into the pin (B) of the base.

WARNING! When installing and whenever acting on the appliance, ensure that the power supply has been switched off.  
For the installation of the spare-part, it is necessary to consult a qualified electrician.

KELVIN EDGE F3452057

EN

## F3450057

KELVIN EDGE CHROME BODY



WARNING! When installing and whenever acting on the appliance, ensure that the power supply has been switched off.  
For the installation of the spare-part, it is necessary to consult a qualified electrician.

©2021 Flos - All rights reserved - [www.flos.com](http://www.flos.com)  
Flos reserves the right to introduce any changes to its own models, without prior notice.

KELVIN EDGE F3452057

EN

## F3450057

KELVIN EDGE CHROME BODY

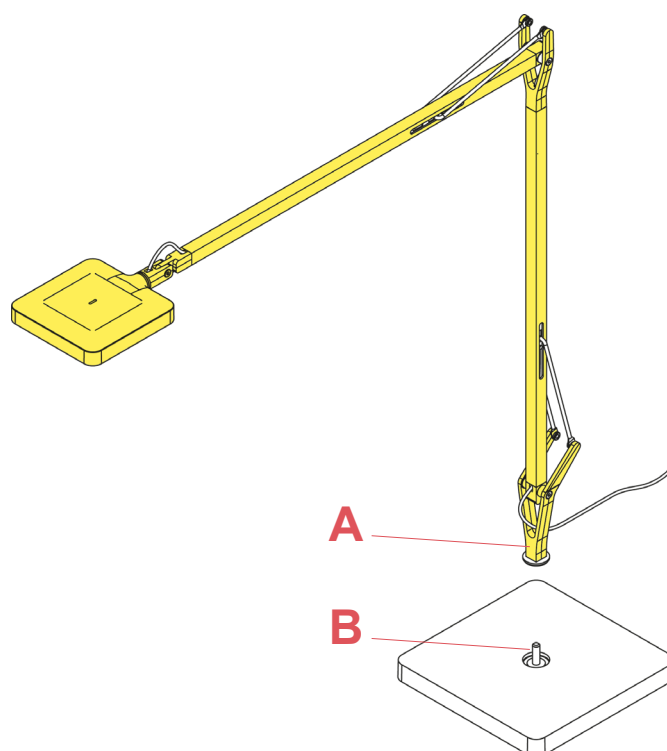


Fig.1

Insert the support (A) of the device into the pin (B) of the base.

WARNING! When installing and whenever acting on the appliance, ensure that the power supply has been switched off.  
For the installation of the spare-part, it is necessary to consult a qualified electrician.