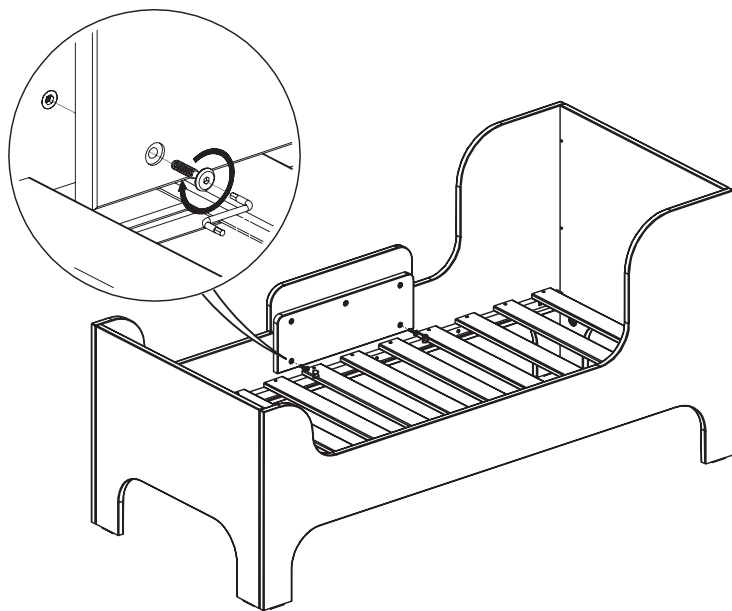


3

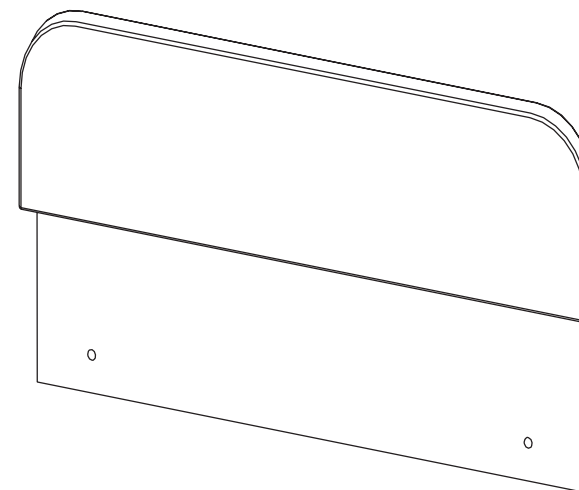
Fix the Sill Bed Guard to the chosen side of the bed by fastening the remaining two screws with the allen key, as illustrated in the drawing.



fermliving.com

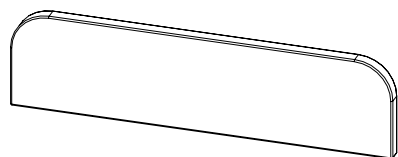
SILL BED GUARD

ASSEMBLY MANUAL



ferm
L I V I N G

BOX CONTENTS



1 x Guard board



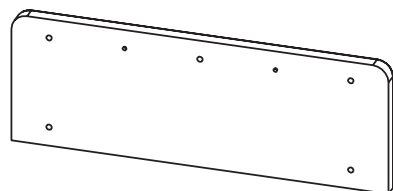
2 x Dowels



5 x Screws

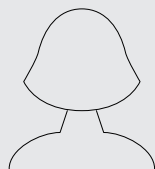


1 x Allen key

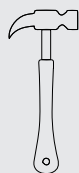


1 x Support board

NEEDED TOOLS



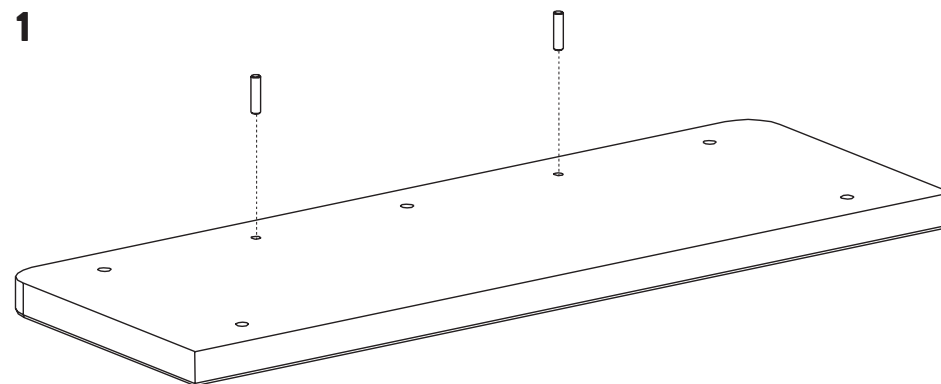
One person



1 x hammer

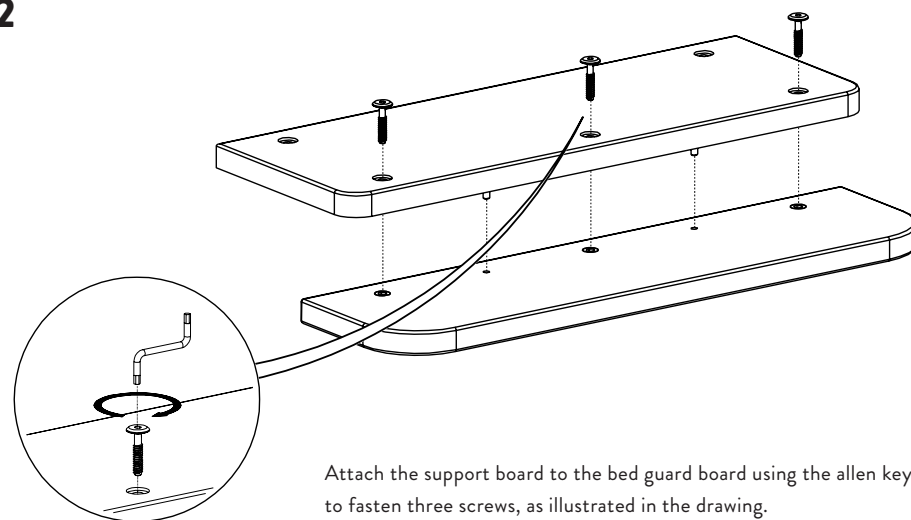
ASSEMBLY PROCESS

1



As shown, insert the two dowels in the two holes in the support board. Please note that the holes for the dowels are slightly smaller. Use the hammer to make sure the dowels are well-positioned.

2



Attach the support board to the bed guard board using the allen key to fasten three screws, as illustrated in the drawing.