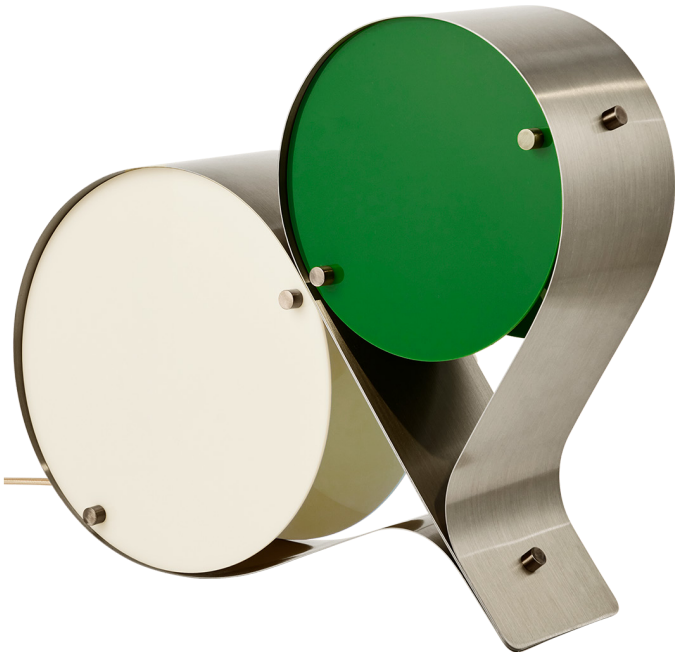


Coppia Table Lamp, US

Designed by Vibeke Fonnesberg Schmidt - 2024





ITEM NUMBER

Coppia Table Lamp - Base: Bronze Steel, Shade: Ivory, Olive	10134330
Coppia Table Lamp - Base: Bronze Steel, Shade: Ivory, Clover	10134336
Coppia Table Lamp - Base: Bronze Steel, Shade: Ivory, Blush	10134337

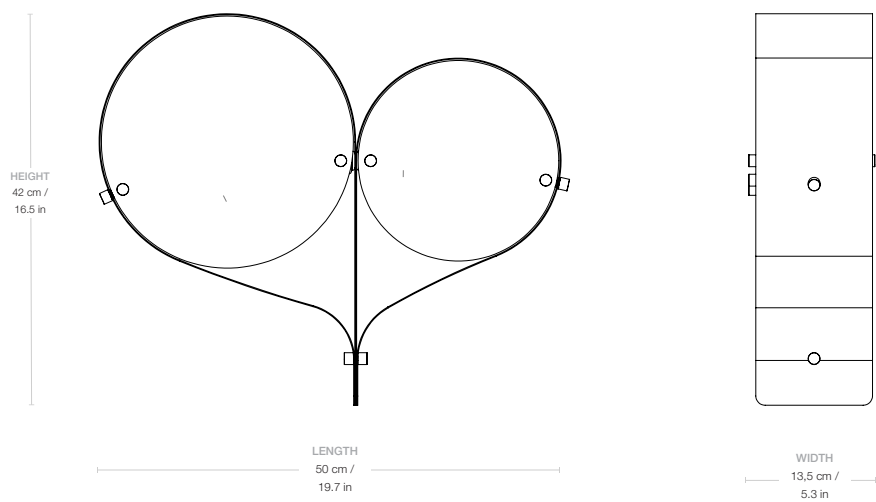
DESCRIPTION

The Coppia Table Lamp is a new sculptural twin-bulb table lamp designed for GUBI by Vibeke Fonnesberg Schmidt. Featuring two discs of Fonnesberg Schmidt' signature plexi-glass housed in a curving metal case, the elegantly industrial design represents both a new material and a new designer for GUBI. The fluid yet geometric design is sturdy enough to be used as either a table or floor lamp, moving easily from desktop to bedside, shelf to window-sill as desired. Coppia is available in tempered and brushed stainless steel, its bronze glow contrasting with a choice of three nature-inspired plexiglass colorways: Ivory/Blush, Ivory/Olive, and Ivory/Clover.

Materials & Finishes

BASE FINISH	Bronze Steel
	
SHADE FINISH	Ivory, Olive, Clover, Blush
	
MATERIAL	Tempered Stainless Steel, Acrylic
CORD	Golden textile

Dimensions



LAMP WIDTH	50 cm / 19.7 in
LAMP DEPTH	13,5 cm / 5.3 in
LAMP HEIGHT	42 cm / 16.5 in
CABLE LENGTH	200 cm / 78.7 in

Weight

TOTAL WEIGHT	3,22 kg / 7 lbs
--------------	-----------------

Number of parcels	1
PACKAGING LENGTH	48 cm / 18.9 in
PACKAGING WIDTH	54 cm / 21.2 in

PACKAGING HEIGHT	17 cm / 6.7 in
PACKAGING WEIGHT	2 kg / 4.4 lbs
GROSS WEIGHT	5,22 kg / 11.5 lbs

Electrical Specifications

BULB SOCKET	2 X E12, Ø40mm
RECOMMENDED BULB	4W LED, 320-470 Lumen, 2700K
DIMMER	No
SWITCH	On Cord
VOLTAGE	120V
BULB INCLUDED	No

Test & Certifications

CERTIFICATION	
ISOLATION CLASS	II
IP CLASSIFICATION	IP20
