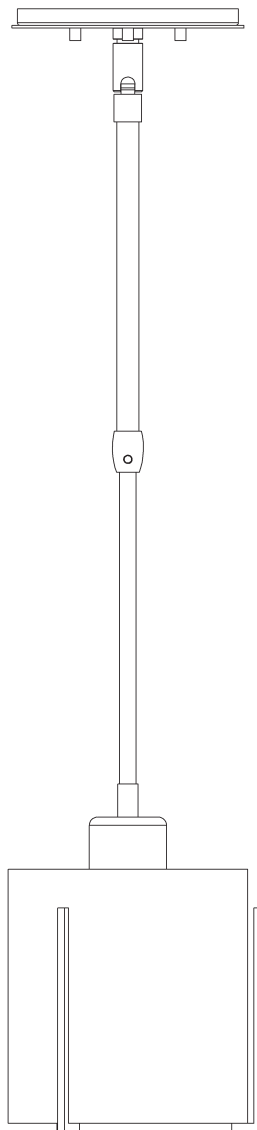


ASSEMBLY & INSTALLATION INSTRUCTIONS

A623

Exos Pendant 187650 & 187660

CONTENTS



HUBBARDTON FORGE.

MODERN AMERICAN BLACKSMITHS | FINE, HAND CRAFTED LIGHTING
CASTLETON, VERMONT USA | HUBBARDTONFORGE.COM

45585

1 OF 5

Component Parts

A	Fixture Coupling
B	Fixture Pipe
C	Canopy
D	Crossbar
E	Ground Screw
F	Threaded Stud (2)
G	Barrel Knob (2)
H	Canopy Pipe
I	Plastic Clutch Sleeve
J	Clutch
K	Set Screw
L	Glass
M	Frame Assembly
N	Retaining Ring
O	Diffuser Glass
P	Socket



ASSEMBLY & INSTALLATION INSTRUCTIONS

A623

Exos Pendant 187650 & 187660

CAUTION: FAILURE TO INSTALL THIS FIXTURE PROPERLY MAY RESULT IN SERIOUS PERSONAL INJURY OR DEATH AND PROPERTY DAMAGE. We recommend installation by a licensed electrician. This product must be installed in accordance with applicable installation code(s), by a person familiar with the construction and operation of the product and the hazards involved.*

Caution: Do not exceed maximum wattage noted on fixture. Use only recommended bulbs with fixture.

Please Note: After installation extra hardware and accessories are possible due to our kits are used on multiple products and options.

FOR ADJUSTABLE HEIGHT FIXTURES

To Install Fixture (Figures 1 & 2)

CAUTION: BE SURE POWER IS OFF AT THE MAIN BREAKER BOX PRIOR TO INSTALLATION.

1. Carefully unpack the fixture from the carton.
2. Carefully thread fixture pipe (B), threaded end first, over fixture wires.
3. Apply a drop of the supplied thread locking compound to the internal threads of fixture coupling (A) and screw stem into fixture, being careful not to twist the wires.

Note: Application of the thread locking compound is necessary to prevent the stem from loosening during regular maintenance and cleaning of the fixture. Be certain to apply the compound.

4. Thread the wires from the fixture pipe (B) into and through the canopy pipe (H) up through the canopy (C).
5. Unscrew the clutch (J) from the canopy pipe (H); slide it across the wires and onto the fixture pipe (B). Follow this with the plastic clutch sleeve (I), oriented so the tapered end of the clutch sleeve nests in the clutch.
6. Slide the canopy pipe (H) as far as necessary to give you the total length of the fixture which you desire. Be careful not to scratch the pipe surfaces and to pull excess wire up through the canopy pipe (H). Screw clutch (J) onto canopy pipe (H). There must be a minimum 1-1/2" of inner pipe inside the outer pipe. Hand-tighten the clutch to temporarily hold this adjustment. The clutch is not securely fastened at this point; do not depend on it to hold the fixture.
7. Important: To ensure full connection strength, be sure the tapered end of the plastic clutch sleeve is oriented toward the clutch when assembled. (Figure 2)
8. Tighten the set screw (K) in clutch (J) firmly with hex wrench provided.
9. Thread studs (F) through appropriate holes in crossbar (D) to match holes in canopy (C).
10. Using two machine screws (not provided), fasten the crossbar (C) to the electric box.

Note: A new electric box comes with screws. When replacing a fixture, retain the existing screws for use with the new fixture.

11. Using suitable wire connectors (not provided) connect fixture wires to supply (white to white and black to black). Attach a pigtail lead to the crossbar ground screw (E). Connect all ground wires (bare copper or green to bare copper or green).

CAUTION: MAKE SURE WIRE CONNECTORS ARE TWISTED ON SECURELY, AND NO BARE WIRE IS EXPOSED.

12. Slide canopy (C) over threaded studs (F) and push firmly to ceiling, making sure that no wires are pinched between fixture canopy (C) and ceiling. Fasten with barrel knobs (G). Be sure studs (F) are fully seated in the barrel knobs (G).

CONTINUED

ASSEMBLY & INSTALLATION INSTRUCTIONS

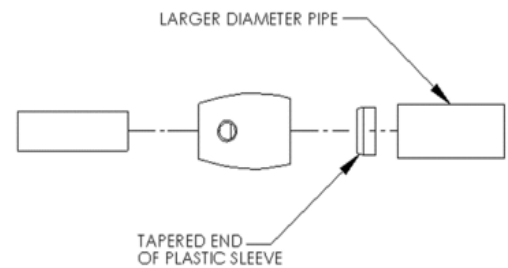
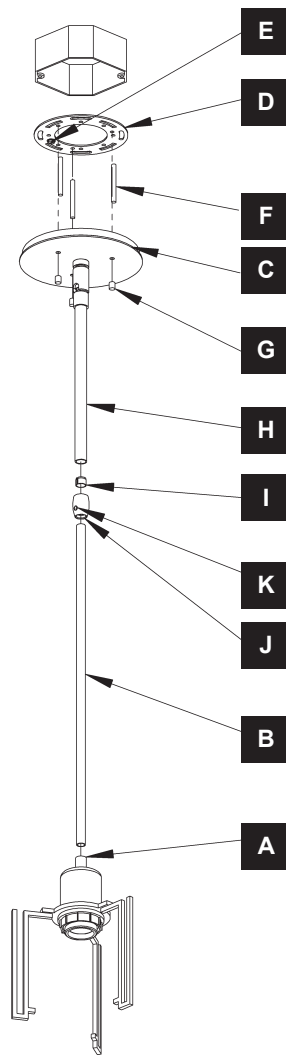
A623

Exos Pendant 187650 & 187660

CAUTION: FAILURE TO INSTALL THIS FIXTURE PROPERLY MAY RESULT IN SERIOUS PERSONAL INJURY OR DEATH AND PROPERTY DAMAGE. We recommend installation by a licensed electrician. This product must be installed in accordance with applicable installation code(s), by a person familiar with the construction and operation of the product and the hazards involved.*

Caution: Do not exceed maximum wattage noted on fixture. Use only recommended bulbs with fixture.

To Install Fixture (Figures 1 & 2) continued



(Figure 2)

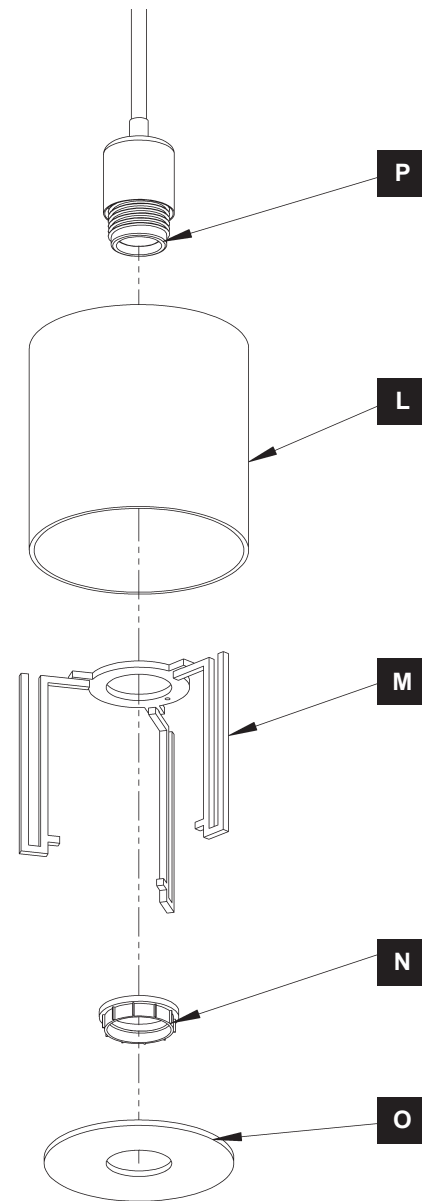
ASSEMBLY & INSTALLATION INSTRUCTIONS

A623

Exos Pendant 187650 & 187660

To Install Glass (Figure 3)

1. Place glass (L) into frame assembly (M).
2. Place frame assembly (M) with glass (L) over the threaded fixture socket (P) and secure with retaining ring (N).
3. Install light bulb, (not included) making sure not to exceed the maximum wattage marked on the fixture.
4. Insert the diffuser glass (O) up into the fixture at an angle then level it and gently lower onto the lowest tabs of the frame.



(Figure 3)

If you need further assistance, or find that you are missing any parts, please contact the dealer from which you purchased this product. We hope you enjoy your fixture!

** Hubbardton Forge will not be liable for injury or damage caused by improper installation, lamping or use of this fixture.*