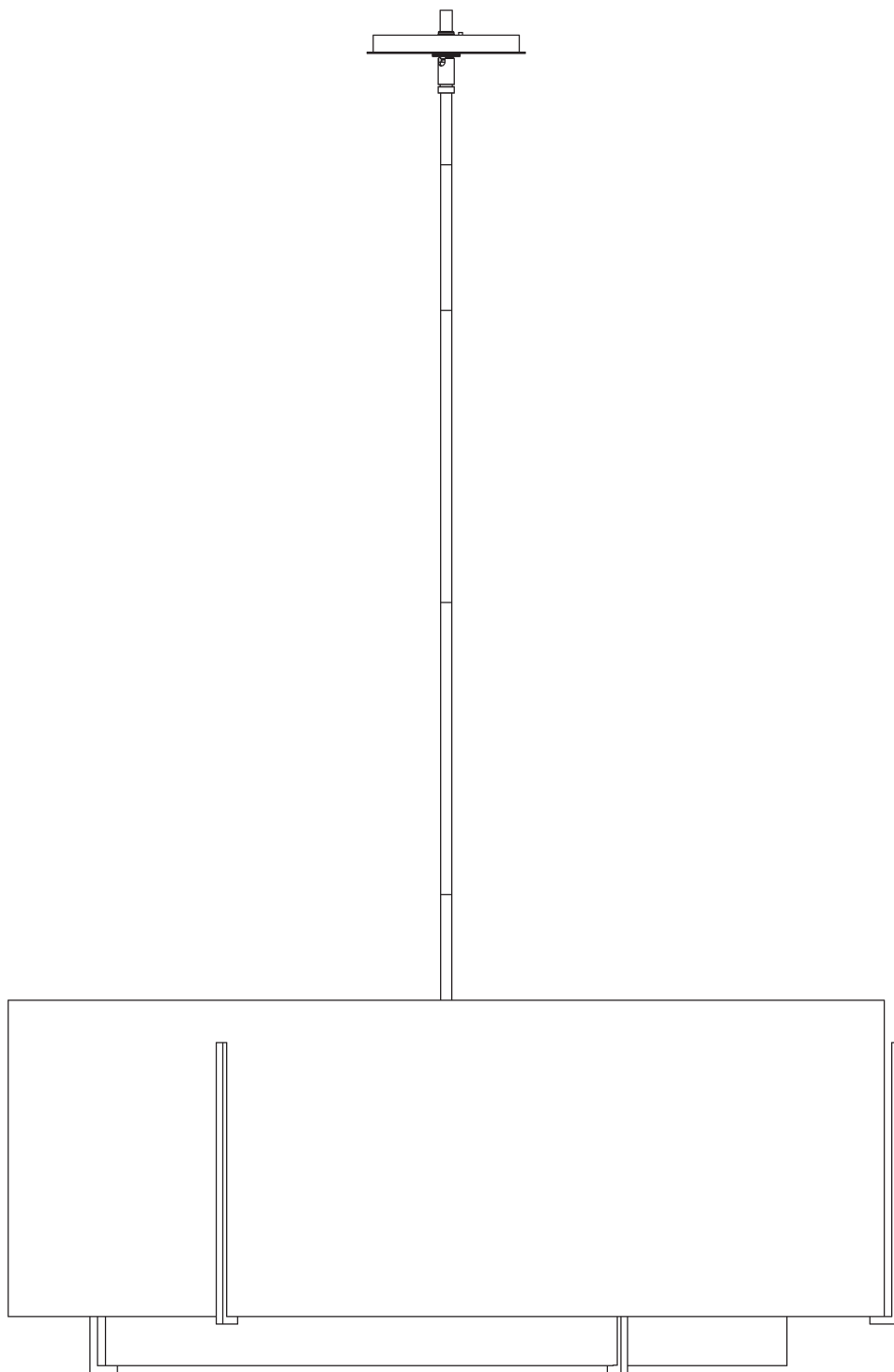


ASSEMBLY & INSTALLATION INSTRUCTIONS

A948

Exos Double Shade Pendant 194636



HUBBARDTON FORGE.

MODERN AMERICAN BLACKSMITHS | FINE, HAND CRAFTED LIGHTING
CASTLETON, VERMONT USA | HUBBARDTONFORGE.COM

52602

1 OF 6

Component Parts

A Fixture	N Spacer
B Crossbar	O Small Shade
C Jam Nut	P Support arms (3)
D Threaded Nipple	Q Inner Spider Assembly
E Ground Screw	R Ball Screw (2)
F Canopy Ring	S Diffuser
G Canopy	T Ring Screws (3)
H Swivel	U Ring Spacer (3)
I 3" Fixture Pipe (1)	V White Ring
J 6" Fixture Pipe (1)	W Outer Shade
K 12" Fixture Pipe (3)	X Support Arms (3)
L Stem Nipple (4)	Y Outer Spider Assembly
M Socket Assembly	



ASSEMBLY & INSTALLATION INSTRUCTIONS

A948

Exos Double Shade Pendant 194636

CAUTION: FAILURE TO INSTALL THIS FIXTURE PROPERLY MAY RESULT IN SERIOUS PERSONAL INJURY OR DEATH AND PROPERTY DAMAGE. We recommend installation by a licensed electrician. This product must be installed in accordance with applicable installation code(s), by a person familiar with the construction and operation of the product and the hazards involved.*

Caution: Do not exceed maximum wattage noted on fixture. Use only recommended bulbs with fixture.

Please Note: After installation extra hardware and accessories are possible due to our kits are used on multiple products and options.

To Install Fixture (Figure 1) on following page

CAUTION: BE SURE POWER IS OFF AT THE MAIN BREAKER BOX PRIOR TO INSTALLATION.

1. Carefully unpack fixture (A) from the carton.
2. Thread jam nut (C) and crossbar (B) onto threaded nipple (D) with ground screw (E) facing towards swivel (H); leave both parts loose.
3. Using two machine screws (not provided), temporarily fasten crossbar (B) to the electric box.

NOTE: A NEW ELECTRIC BOX COMES WITH SCREWS. WHEN REPLACING A FIXTURE, RETAIN THE EXISTING SCREWS FOR USE WITH THE NEW FIXTURE.

4. Adjust the length of threaded nipple (D) in crossbar (B) so that canopy ring (F) will hold canopy (G) against the ceiling with no threads showing for best appearance. When the correct adjustment is established, tighten jam nut (C) against crossbar (B) to secure the adjustment.
5. Remove crossbar (B) from the electrical box and proceed with the assembly instructions.
6. Locate fixture pipes (I, J, K), fixture (A), stem nipples (L). Stem nipples (L) can be found in the kit bag.
7. Provided are multiple fixture pipes in three different lengths. Choose the combination that will achieve the overall height desired. Refer to the table below to determine the pipes required to reach the desired overall height. Once you have determined the components necessary, feed the wires that exit fixture (A) through the individual components and thread pipes and nipples together. Wires will slip easier through loose components than through pipes and nipples that are pre-assembled. Once wires are run, apply thread locking compound to all the connection points and assemble the pipes and nipples.

		Overall Height of Fixture							
		34	37	40	43	46	49	52	55
# of Pipes Required	3" Pipe (I)		1		1		1		1
	6" Pipe (J)			1	1			1	1
	12" Pipe (K)	2	2	2	2	3	3	3	3

NOTE: APPLICATION OF THE THREAD LOCKING COMPOUND IS NECESSARY TO PREVENT THE PIPE FROM LOOSENING DURING REGULAR MAINTENANCE AND CLEANING OF THE FIXTURE. BE CERTAIN TO APPLY THE COMPOUND.

8. Carefully slide spacer (N), canopy ring (F) and canopy (G) over wires and fixture pipes (I, J, K) until they rest on fixture (A). Slip wires from the fixture (A) through assembled swivel (H) and threaded nipple (D).
9. Refer to instructions on next page to continue installation.
10. Using two machine screws (not provided), fasten crossbar (B) to the electric box.



HUBBARDTON FORGE.

MODERN AMERICAN BLACKSMITHS | FINE, HAND CRAFTED LIGHTING
CASTLETON, VERMONT USA | HUBBARDTONFORGE.COM

52602

3 OF 6

ASSEMBLY & INSTALLATION INSTRUCTIONS

A948

Exos Double Shade Pendant 194636

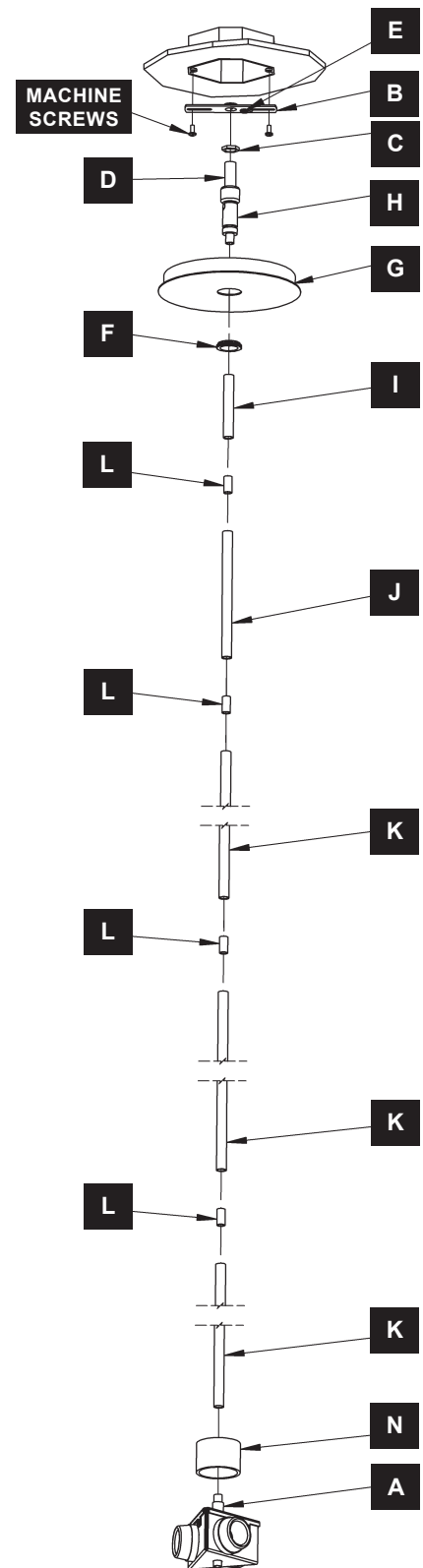
11. Using suitable wire connectors (not provided) connect fixture wires to supply (white/ribbed to white and black/smooth to black). Attach a pigtail lead to crossbar ground screw (E). Hold canopy (G) close, connect all ground wires (bare copper or green to bare copper or green).

CAUTION: MAKE SURE WIRE CONNECTORS ARE TWISTED ON SECURELY, AND NO BARE WIRE IS EXPOSED.

12. Slide canopy (G) against ceiling, and secure with canopy ring (F).

CAUTION: BE SURE NO WIRES ARE PINCHED BETWEEN CANOPY (G) AND THE CEILING.

13. Refer to instructions on next page to install shade.



(Figure 1)



HUBBARDTON FORGE.

MODERN AMERICAN BLACKSMITHS | FINE, HAND CRAFTED LIGHTING
CASTLETON, VERMONT USA | HUBBARDTONFORGE.COM

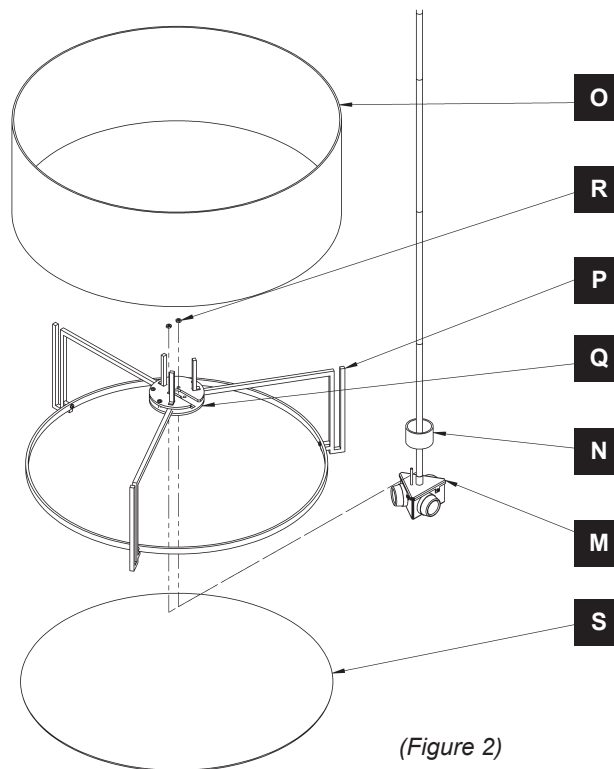
ASSEMBLY & INSTALLATION INSTRUCTIONS

A948

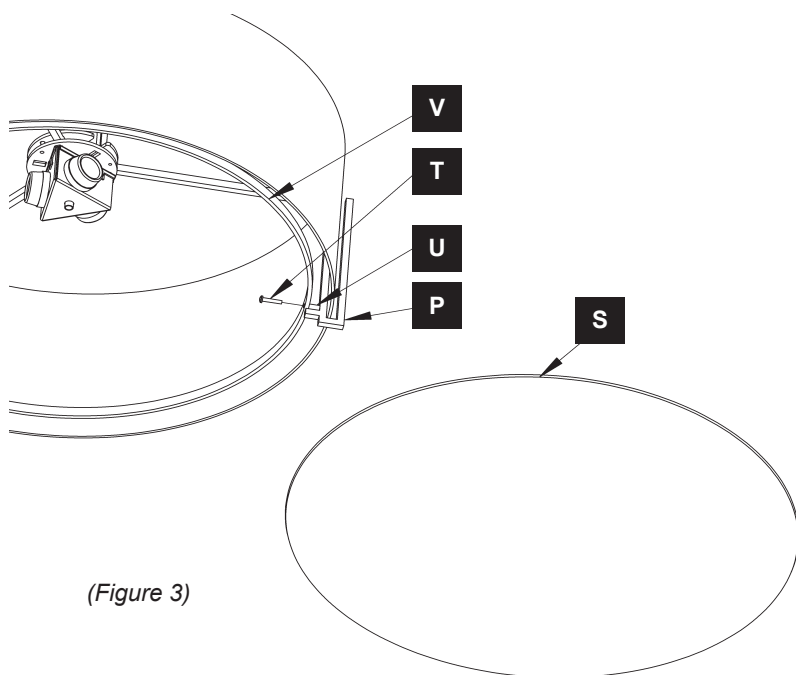
Exos Double Shade Pendant 194636

Install Inner Shade & Diffuser (Figures 2, 3 & 4)

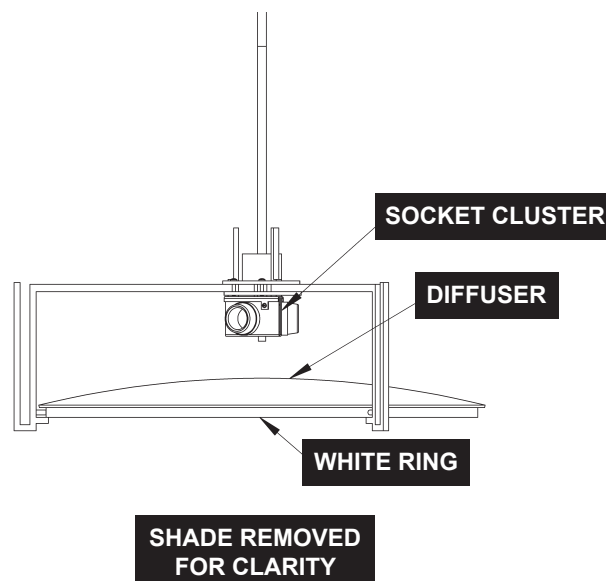
1. Place small shade (O) into notches of support arms (P).
2. Lift spacer (N) up off of socket assembly (M) and move shade (O) and inner spider assembly (Q) up and over socket assembly (M) and secure with ball screws (R).
3. Place spacer (N) on top of socket assembly (M).
4. Lift Shade (O) to install light bulbs. (Not included)
5. Loosen one of the ring screws (T) and remove along with the ring spacer (U). Save for later use.
6. Pull the white ring (V) down while flexing the support arm (P) out to allow the ring to slip down.
7. While holding the ring down slip the diffuser (S) between the white ring (V) and the support arm (P) and place on top of the white ring. Note: Make sure the diffuser is installed with the arc towards the bulbs. See Figure 4.
8. Replace ring screw (T) and ring spacer (U) and tighten screw until snug.



(Figure 2)



(Figure 3)



(Figure 4)



HUBBARDTON FORGE.

MODERN AMERICAN BLACKSMITHS | FINE, HAND CRAFTED LIGHTING
CASTLETON, VERMONT USA | HUBBARDTONFORGE.COM

52602

5 OF 6

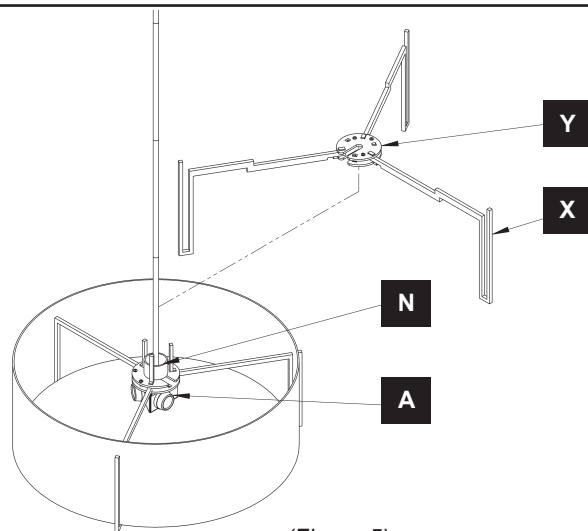
ASSEMBLY & INSTALLATION INSTRUCTIONS

A948

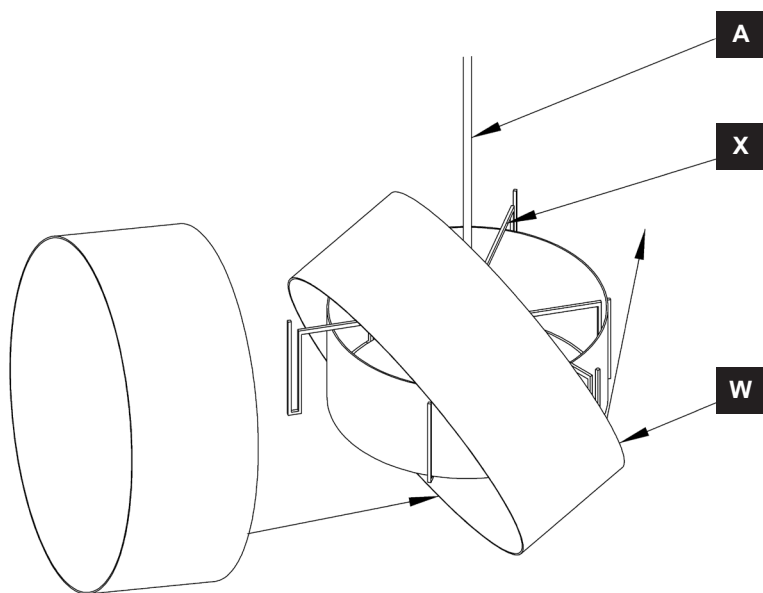
Exos Double Shade Pendant 194636

Install Outer Shade (Figures 5, 6 & 7)

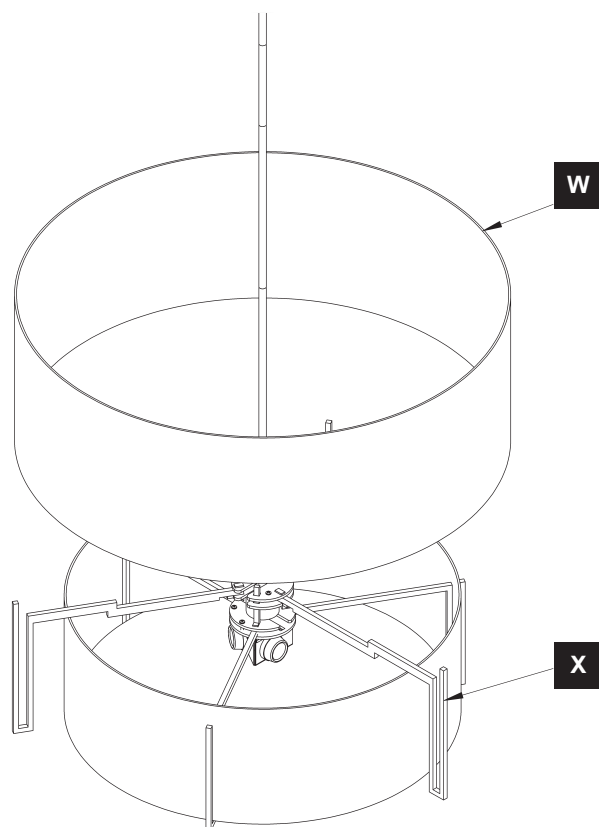
1. Align outer spider assembly (Y) so square openings line up with vertical uprights on fixture (A) (Figure 5).
2. Lower outer spider assembly (Y) onto vertical uprights until it is resting on spacer (N) (Figure 5).
3. Install outer shade (W) by orienting per Figure 6 and slipping over outer spider assembly (Y). It might be necessary to flex the shade slightly to clear all three support arms.
4. Lower outer shade (W) until it rests in the support arms (X) of outer spider assembly (Y).
5. Restore electricity at main breaker box.



(Figure 5)



(Figure 6)



(Figure 7)

If you need further assistance, or find that you are missing any parts, please contact the dealer from which you purchased this product. We hope you enjoy your fixture!

*** Hubbardton Forge will not be liable for injury or damage caused by improper installation, lamping or use of this fixture.**



HUBBARDTON FORGE.

MODERN AMERICAN BLACKSMITHS | FINE, HAND CRAFTED LIGHTING
CASTLETON, VERMONT USA | HUBBARDTONFORGE.COM

52602

6 OF 6