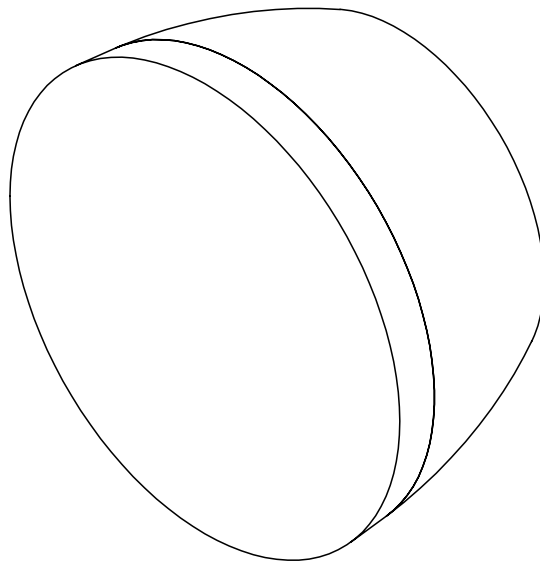


**hollis+morris**



**berm  
sconce**

product installation + specifications



# berm sconce

**product code:**

**BERMsconce**

**materials:**

- + solid wood
- + acrylic
- + COB LED

**finish:**

- + hardwax oil
- + frosted or patterned acrylic

**input:**

- + 120- 277V 50/60 Hz (Canada + US)

**driver:**

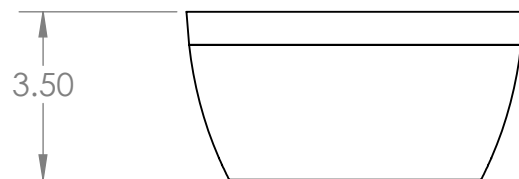
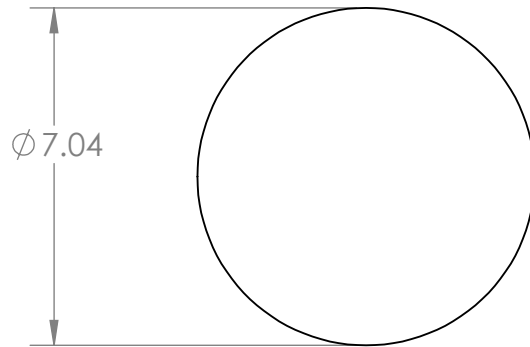
- + 12W Constant current driver
- + TRIAC / ELV / 0-10 dimmable

**output:**

- + 12 W
- + 3000K with CRI of 95+
- + 600 Lms

**mounting:**

- + junction- box connection
- + single driver connection

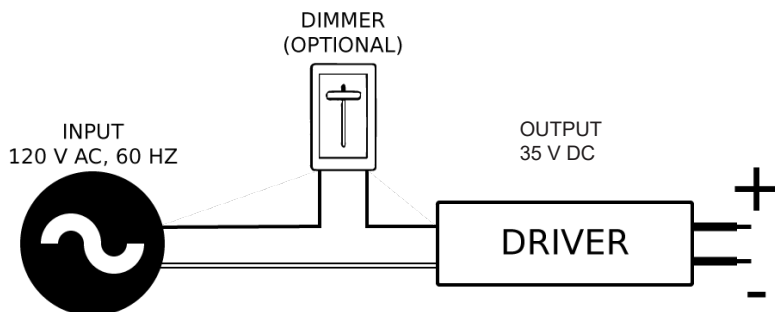
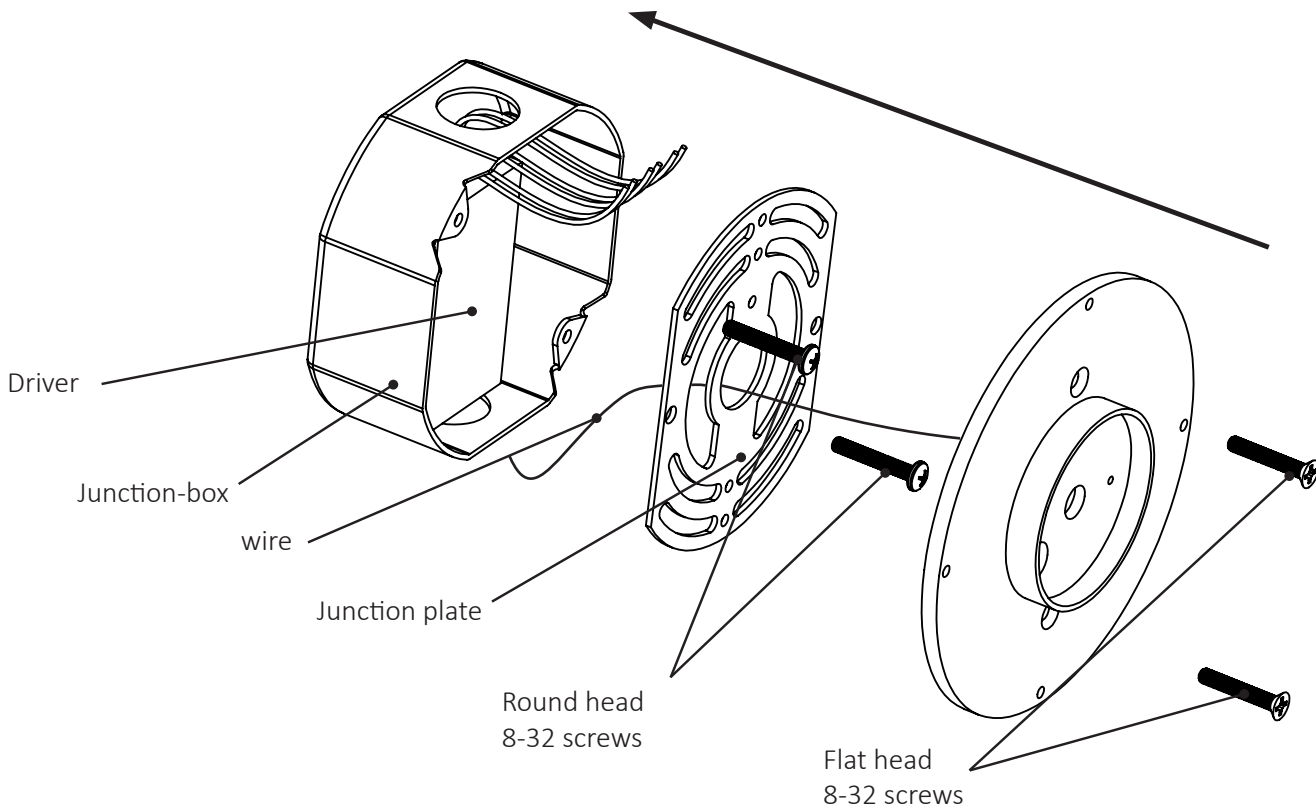


**certification:**



# hardware + installation

1. Connect the driver to the junction box using the adhesive tape applied to the back of the driver.
2. Feed wires through universal junction plate so that it can be connected to the driver.  
Then have a certified electrician connect the driver to 120V power.
3. Fasten the junction plate to the junction box using the round head 8-32 screws.
4. Mount the back plate to the junction plate using the flat head 8-32 screws.



# hardware + installation

5. Twist the wood with lens onto the backplate until secure.

