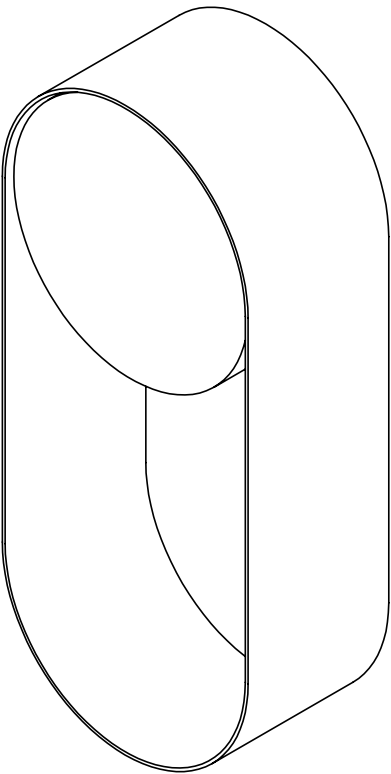


hollis+morris

**oyster
sconce**

product installation + specifications



oyster sconce

product code:
OSTRsconce

materials:

- + metal
- + acrylic
- + COB LED

finish:

- + powder coated or plated steel
- + frosted or patterned acrylic

input:

- + 120- 277V 50/60 Hz (Canada + US)

driver:

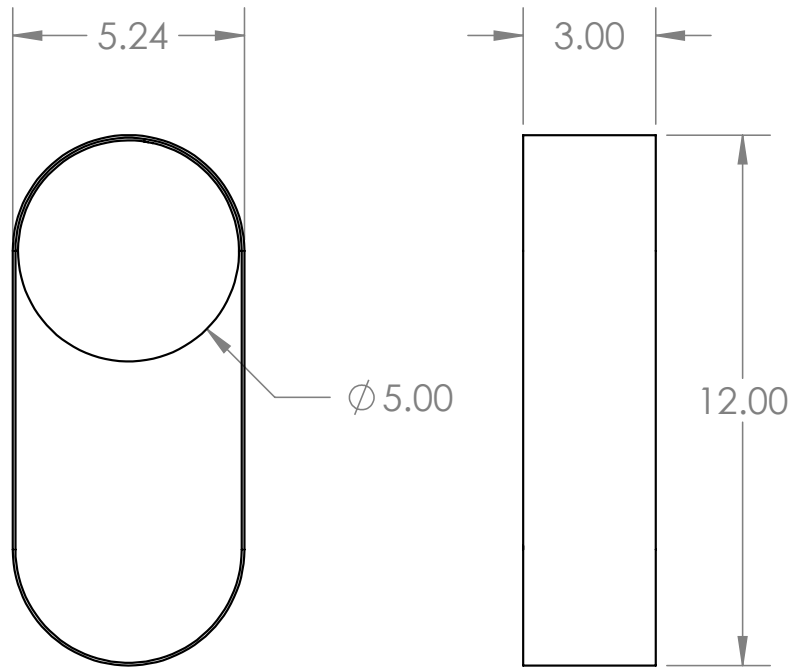
- + 12W constant current driver
- + TRIAC / ELV / 0-10 dimmable

output:

- + 12 W
- + 3000K with CRI of 95+
- + 600 Lms

mounting:

- + junction- box connection
- + single driver connection

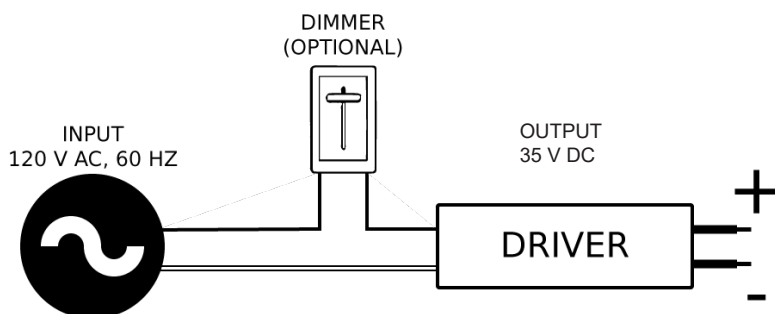
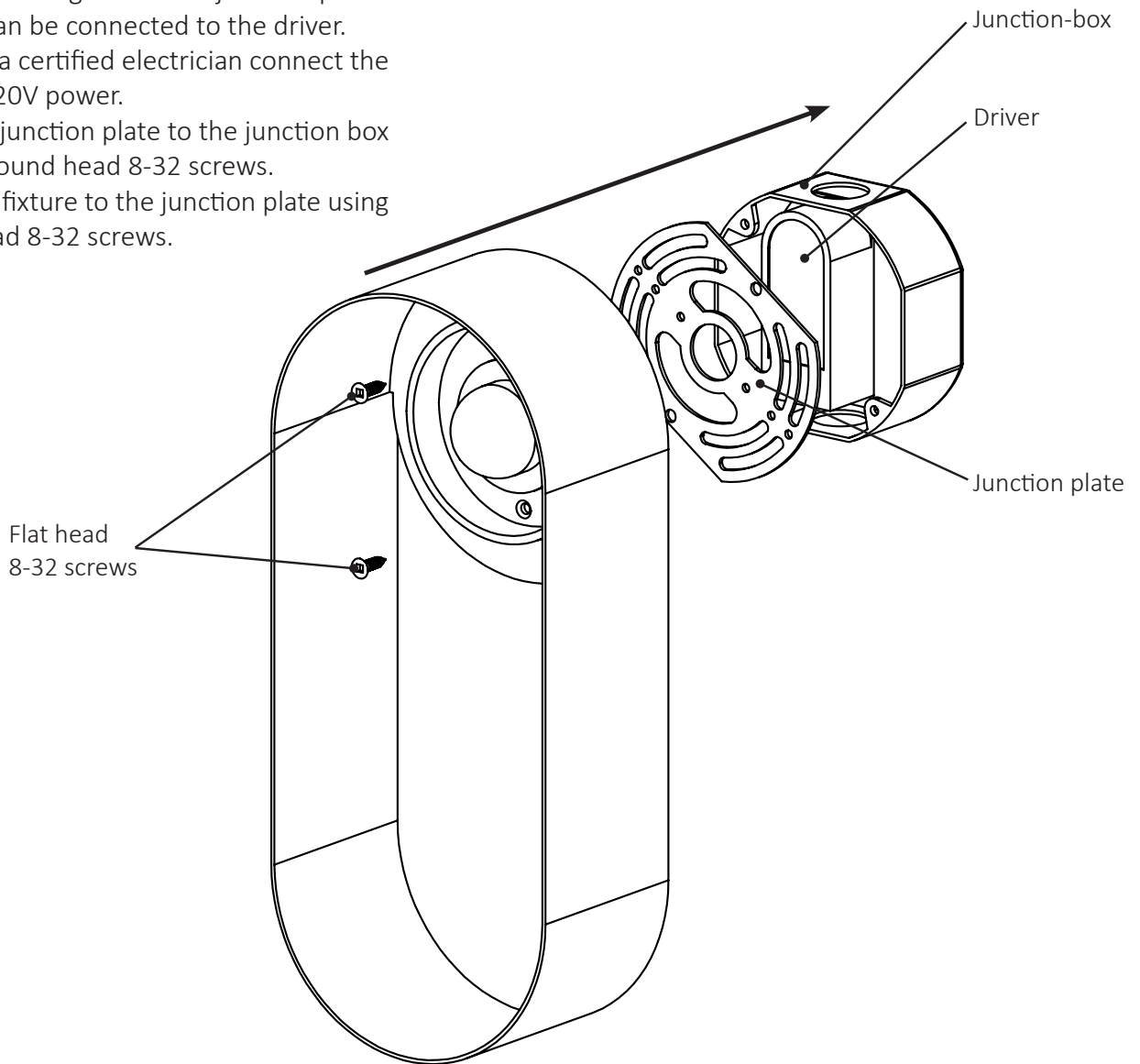


certification:



hardware + installation

1. Connect the driver to the junction box using the adhesive tape applied to the back of the driver.
2. Feed wires through universal junction plate so that it can be connected to the driver. Then have a certified electrician connect the driver to 120V power.
3. Fasten the junction plate to the junction box using the round head 8-32 screws.
4. Mount the fixture to the junction plate using the flat head 8-32 screws.



hardware + installation

5. Place the acrylic over the collar with the threaded hole facing the opening of the fixture.
6. Tighten the provided 1/4-20 set screw in until the acrylic is securely in place.

