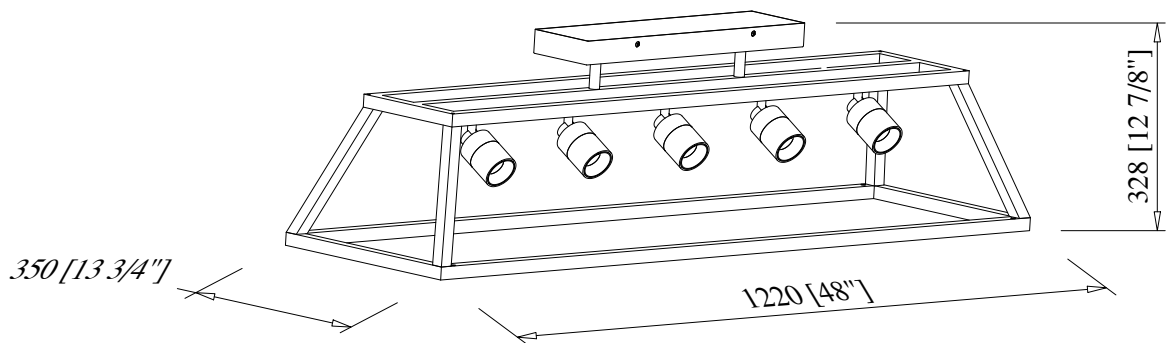
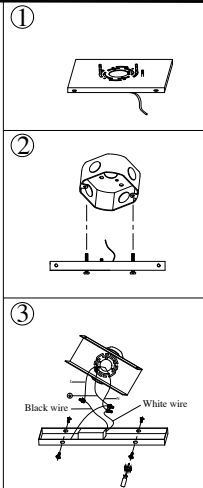
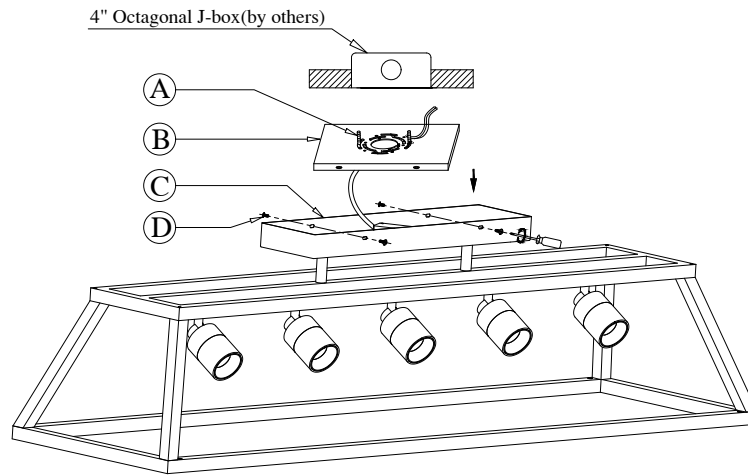


DIAGRAM OF INSTALLATION STRUCTURE

SKU No. :CE1009222/CE1009223/CE1009224

Product Size: L48"*W13.8"*H12.9"

Light Source: COB



- Ⓐ Mounting Screw (2X) Ⓑ Mounting Bracket Ⓒ Canopy Ⓓ Round Head Screw (4X)

Installation instruction

1. Unpack and take out the fixture / accessory bag, then turn off the power.
2. Dismantle mounting bracket subassembly as picture(1), then install mounting bracket(B) to J-Box with mounting screws(A).
3. Connect the fixture to a suitable ground in accordance with local electrical codes.
4. Connect the White wire to the neutral power line wire with a wire nut.
5. Connect the Black wire to the hot power line wire with a wire nut.
6. Neatly place all wires and wire nut connections inside the J-box.
7. Install canopy(C) to ceiling with round head screws(D).
8. Adjust the direction and angle of spotlights as the need.
9. After finish the installation, turn on the power.