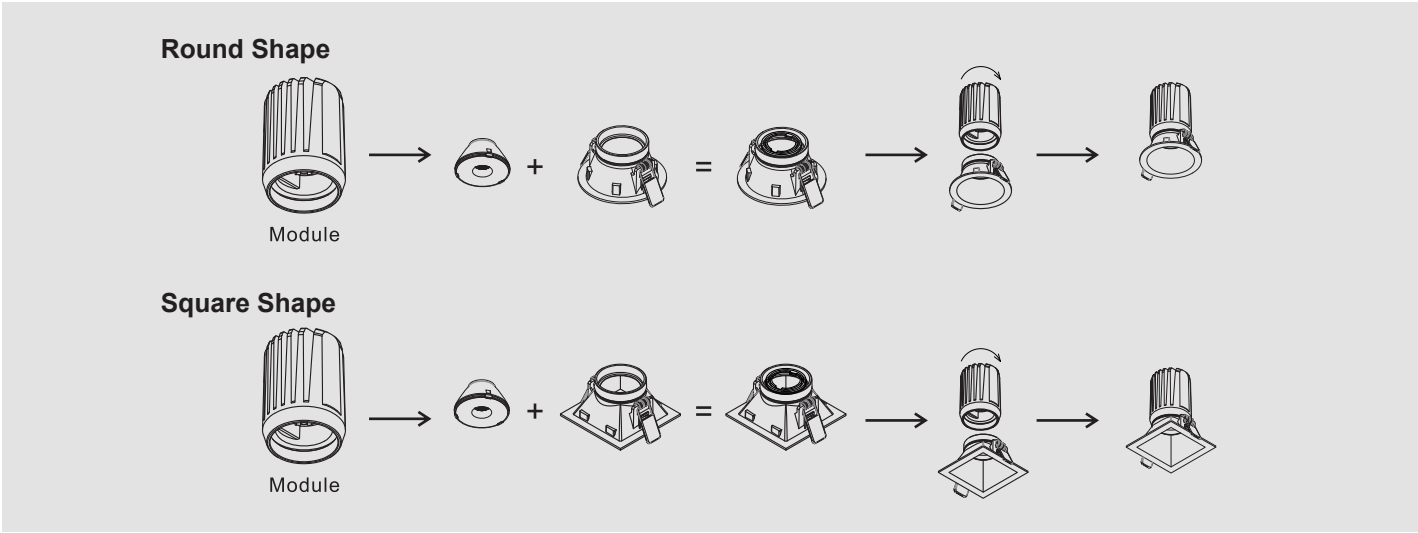


2" and 3" Recessed Downlights With Trim

FIXTURE ASSEMBLY



INSTALLATION

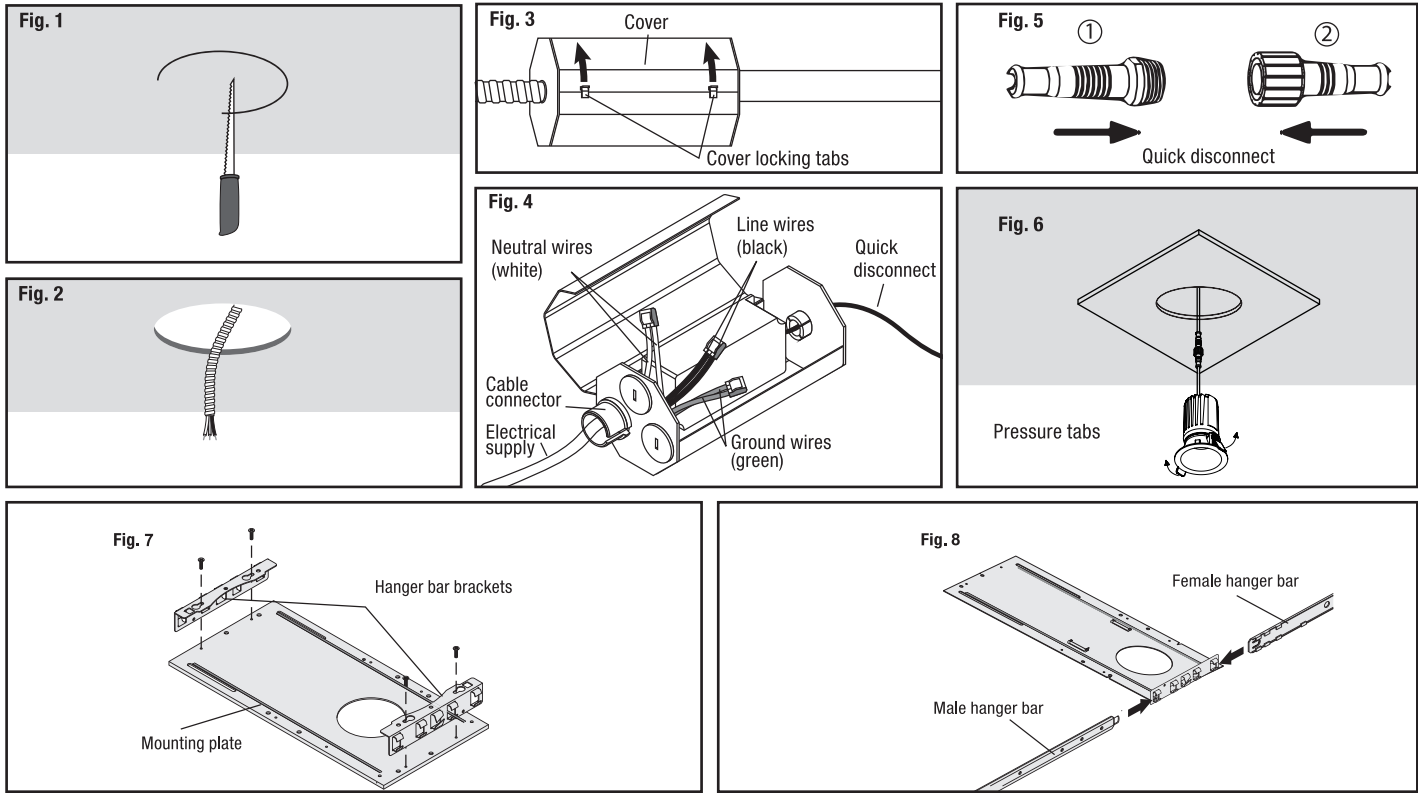
IMPORTANT: Read all instructions before installing fixture. Retain for future reference.

SAFETY

Turn the power off at main fuse/breaker panel before attempting any electrical work. This luminaire must be wired in accordance with local electrical codes and ordinances. Grounding connections should be done in the detachable junction box.

WARNING

Make sure the power is OFF from the electrical panel before starting installation or attempting any maintenance. Indoor installation only.



IMPORTANT

Read all instructions before installing plate. Retain for future reference.

NEW CONSTRUCTION MOUNTING PLATE ASSEMBLY:

1. Align hanger bar brackets with mounting holes on the new construction mounting plate and secure in place with mounting screws (Fig.7). **NOTE:** Hanger bars can be installed on long or short side of the new construction mounting plate.
2. Insert both female and male parts of the hanger bars into the bracket from opposite ends (Fig.8). Make sure that the male part is inserted within the female part and that the end tab is facing downwards.

INSTALLATION

1. Nail-in the mounting plate to the ceiling joist (Fig.7-8). Measure the position of the opening on the mounting plate from each wall. (If needed for new construction).
2. Install the drywall on to the ceiling.
3. Cut-out a Square hole where the mounting plate opening is located. (Fig.1)
4. Pull the supply wire through the cut-out hole (Fig.2). Do the electrical supply connection in the detachable junction box (Note: A licensed electrician must do the connections as per the local electrical code). Insert the junction box into the ceiling. (Fig.3-4)
5. Do the connection to the luminaire and close the quick connect box. (Fig.5)
6. Push the spring clips upwards and push the luminaire into the cut hole of the ceiling. Release the spring clips and align the luminaire to sit properly over the ceiling cut hole. (Fig.6)
7. Switch on the supply breaker and turn on the luminaire.