

## Important:

Read all the instructions included before installing the fixture. Retain this document for future reference.

## Safety Warning:

Turn off the power at the main fuse/breaker panel before beginning installation to avoid electrical shock. Do not install the fixture on an unfinished ceiling. Ensure a stable and secure surface before installing. Wear gloves while installing the fixture. Indoor installation only.

Fig. 1

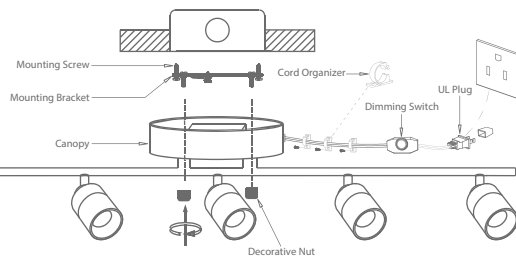


Fig. 2

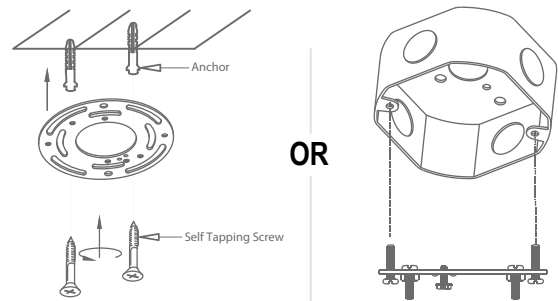


Fig. 3

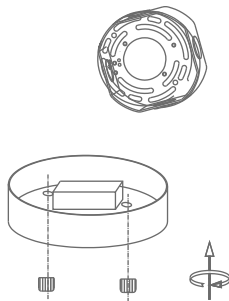
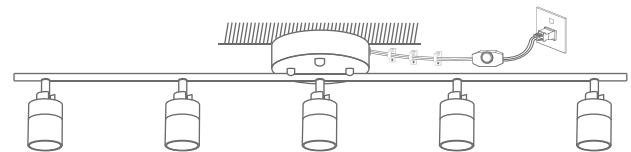


Fig. 4



## Installation Steps:

- 1: Carefully separate the mounting bracket from the canopy.
- 2: Position the mounting bracket on the junction box (J-box). Secure the bracket with the mounting screws provided, ensuring it is level and firmly attached.
- 3: Connect the fixture wiring. Ensure all wire connections are secure and insulated.
- 4: Neatly tuck the connected wires into the J-box. Attach the canopy to the mounting bracket using the decorative nuts provided.
- 5: Use the cord organizer to straighten and secure the cable of the fixture to the ceiling and wall.
- 6: After finishing all the installation, insert the UL plug into the socket and turn on the power.