

Justice Design Group

Installation Instructions

Chandelier

For Model: FSN-8353-CLFT, FSN-8354-CLFT, FSN-8355-CLFT

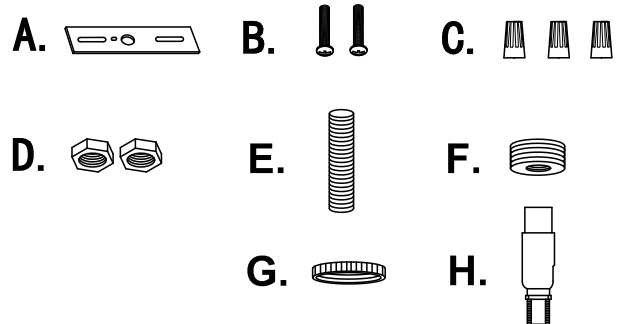
IMPORTANT

- Justice Design recommends that a licensed electrician install this lighting fixture
- Installation must comply with all building, safety, and electrical codes and requirements
- Disconnect power to the junction box prior to installation
- Do not reconnect power until this fixture is properly installed
- This fixture is designed to mount to a standard metal 4-0 octagonal junction box



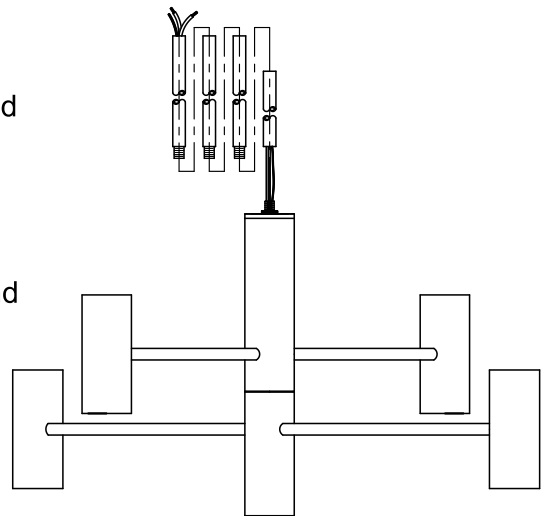
Hardware Pack contains:

- A. (1) Mounting Plate
- B. (2) Fixture Mounting Screws
- C. (3) Wire Nuts
- D. (2) Hex Nuts
- E. (1) Nipple
- F. (1) Hickey
- G. (1) Lock ring
- H. (1) Swivel



1

1. This chandelier includes 4 stems. Before assembly, measure the installation area to determine the desired hanging height.
2. Feed the electrical wire through the stem. Concurrently, assemble the stems by securing them together with the threaded nipples.
3. Once the stems are assembled, attach the bottom end of the complete rod assembly securely onto the main fixture body until firmly tightened.



405 E Euclid Ave • Compton, CA 90222

Tel: (213) 437-0102 • Fax: (213) 437-0860 • E-mail: sales@JDG.COM Website: www.JDG.com

FSN-8353-CLFT
FSN-8354-CLFT
FSN-8355-CLFT

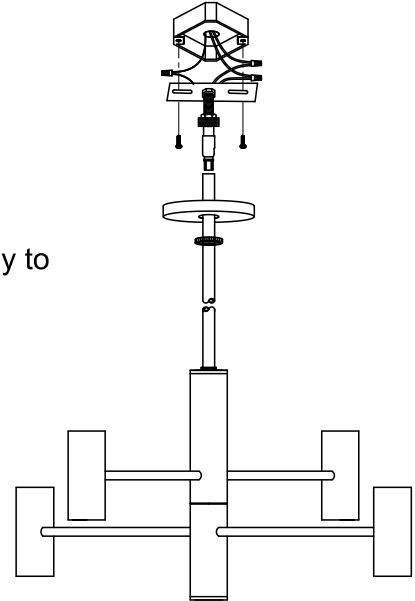
©12/04/2025

Chandelier

Justice Design Group page 2

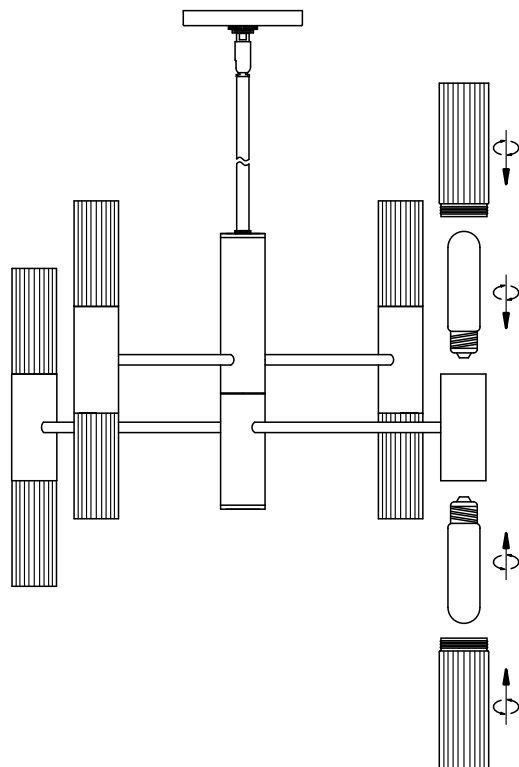
2

1. Attach the fixture mounting plate onto the stem until tight.
2. Attach the mounting plate (A) to the outlet box using two mounting screws (B).
3. Connect fixture wires to supply wires using wire nuts. Observe polarity: black to power, white to neutral, and bare copper to green ground.
4. Tuck wires and wire nuts into outlet box. Secure the canopy to the fixture mounting plate use the lock ring (G),



3

1. Fold out arms of fixture to desired positions.
2. Install bulb (Not included).
Take care never to exceed maximum wattage.
3. Secure the glass shade to lamp body.



**Your installation is now complete
Return power to the junction box
and test the fixture.**