



ASSEMBLY & INSTALLATION INSTRUCTIONS

MODEL: 527455OWL
8 LIGHT PENDANT

I M A G E



If you have any questions or problems assembling your fixture please call us for assistance.

Customer Service: (702) 361-4345 or (800) 525-2655

customer.services@kalco.com

WARNING! TO REDUCE THE RISK OF FIRE OR INJURY PLEASE TAKE PRECAUTION AND FOLLOW THE STEPS BELOW.

1. This product must be installed in accordance with the applicable installation code by a person familiar with the construction and operation of the product and the hazards involved.
2. Turn off the power to the fixture's circuit at the service panel. Use a voltage detector to verify that the power is off.
3. DO NOT install bulb which exceeds the maximum wattage specified on the socket label.

Si vous avez des questions ou des problèmes assemblage de votre dispositif s'il vous plait appel pour l'assistance.

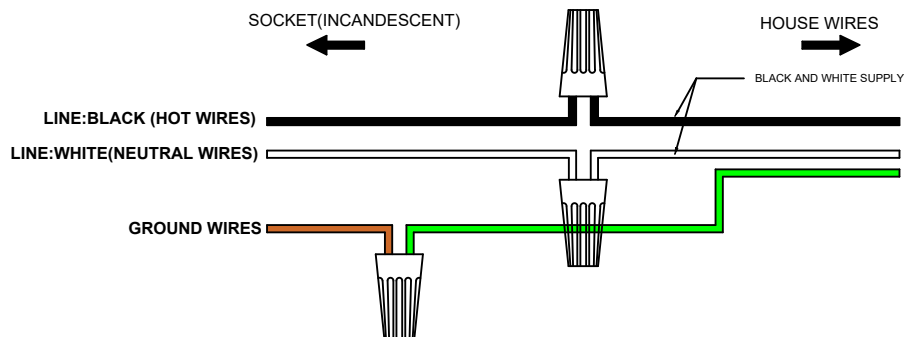
Customer Service: (702) 361-4345 or (800) 525-2655

customer.services@kalco.com

AVERTISSEMENT! POUR RÉDUIRE LES RISQUES D'INCENDIE OU DE BLESSURES S'IL VOUS PLAÎT PRENDRE DES PRÉCAUTIONS ET SUIVEZ LES ÉTAPES CI-DESSOUS.

1. Ce produit doit être installé conformément au code d'installation applicable par une personne connaissant la construction et le fonctionnement du produit ainsi que les dangers encourus.
2. Coupez l'alimentation au circuit de l'appareil sur le tableau de service. Utiliser un détecteur de tension pour vérifier que l'alimentation est coupée
3. NE PAS installer l'ampoule qui excède la puissance maximale indiquée sur l'étiquette du socket.

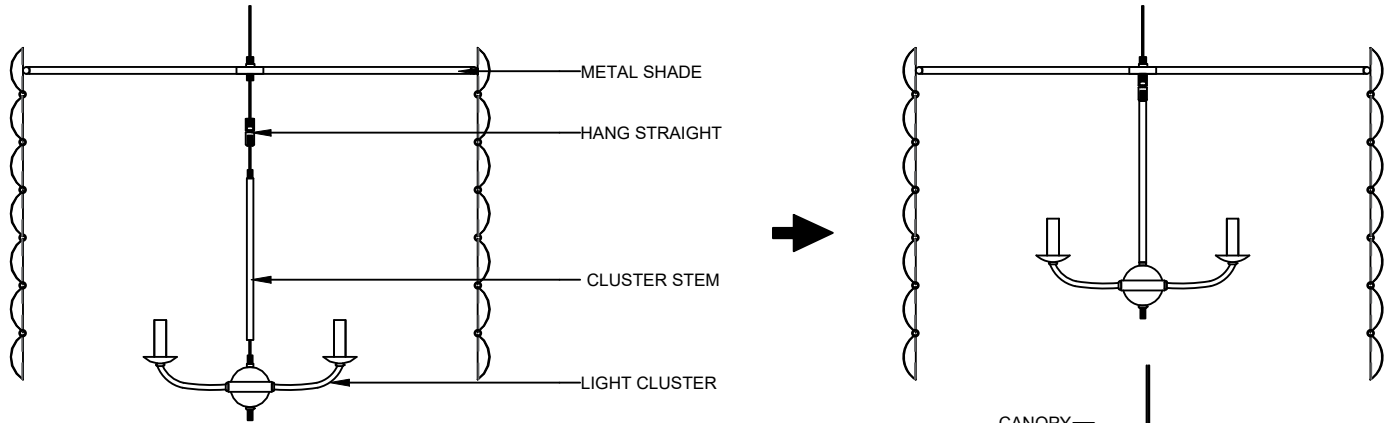
WIRING DIAGRAM



ASSEMBLY & INSTALLATION INSTRUCTIONS

MODEL: 527455OWL
8 LIGHT PENDANT

KNOCK DOWN ASSEMBLY

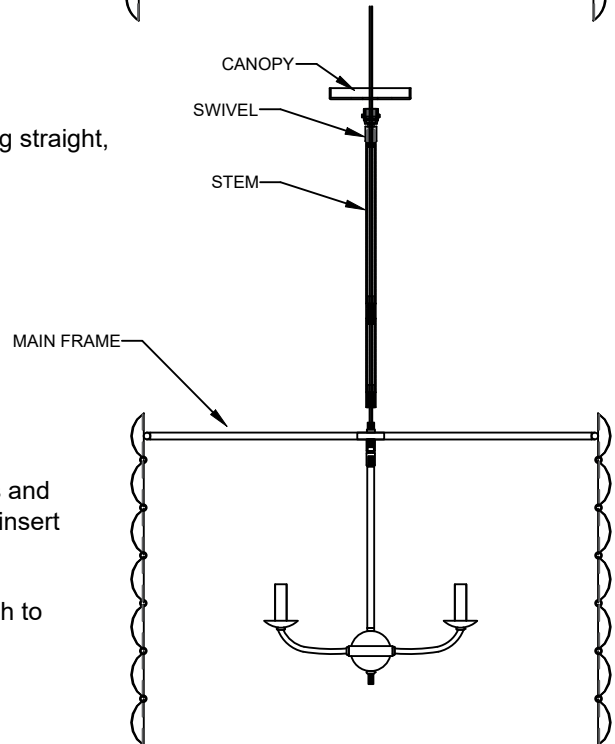


STEP 1: Carefully pass the wire through the cluster stem, hang straight, and metal shade.

Note: Be careful not to damage the wire.

STEP 2: Determine the desired height with the provided stems and connect them together into one long stem. Carefully insert the wire through the stem.

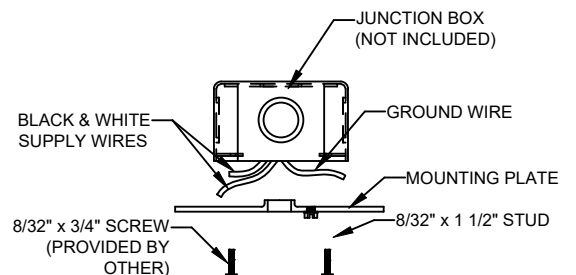
STEP 3: Attach the swivel at the top end of the stem and attach to the canopy with the swivel ring.



ELECTRICAL / MOUNTING INSTALLATION

STEP 4: Attach mounting plate to outlet box with the (2) 8-32 x 3/4" screws(provided by other).

STEP 5: Connect bare ground wire from the outlet box (if supplied) with connectors.

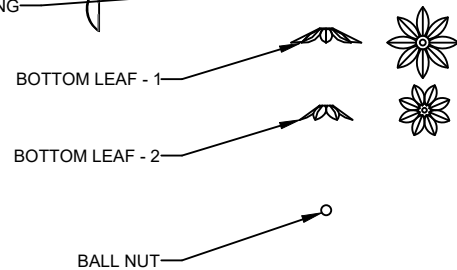
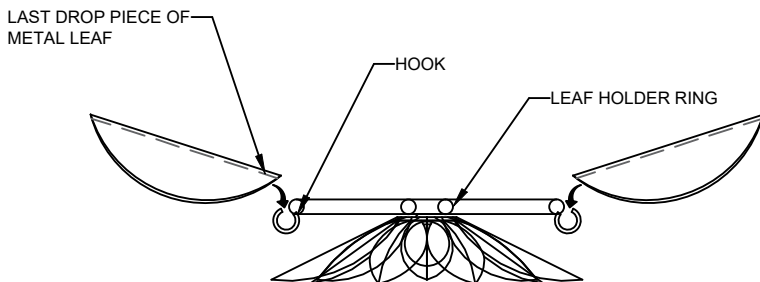
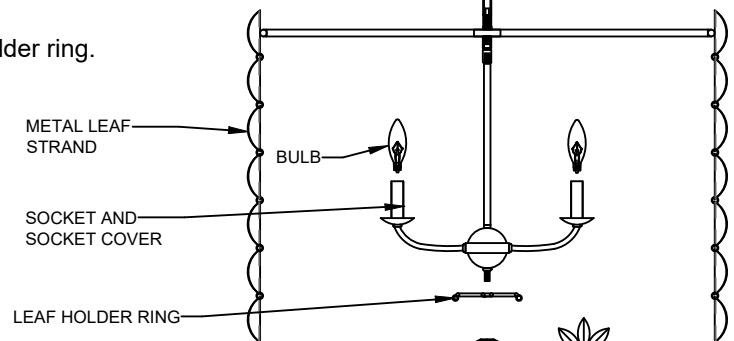
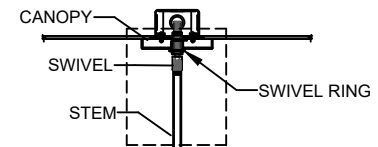
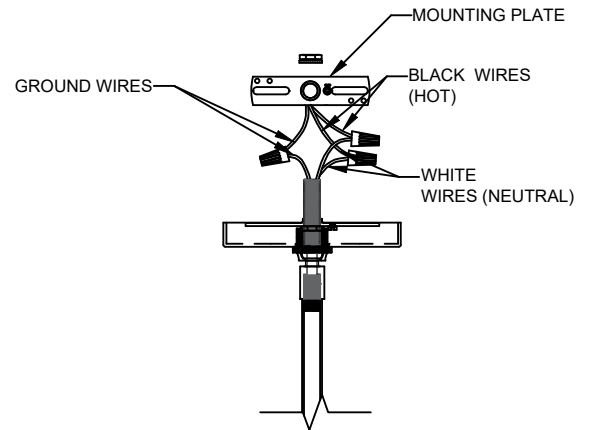


ASSEMBLY & INSTALLATION INSTRUCTIONS

MODEL: 527455OWL
8 LIGHT PENDANT

ELECTRICAL / MOUNTING INSTALLATION

- STEP 6:** Refer to wiring diagram. With wire carefully threaded through the swivel, connect the black supply wire to the black fixture wire with wire connector, connect the white supply wire to the white fixture wire with wire connector.
- STEP 7:** Carefully tuck all wires into outlet box ensuring that there are no wires pinched between the canopy and ceiling.
- STEP 8:** Cap the canopy to the mounting plate, make sure that it rest firmly on the ceiling then lock using the swivel ring.
- STEP 9:** Install (8) E12 bulbs. Do not use bulbs that exceed 40 Watts.
- STEP 10:** Attach the leaf holder ring, bottom leaf 1 and 2, and secure them using the ball nut.
- STEP 11:** Connect the metal leaf strands to the leaf holder ring.



FOR LIGHTING MAINTENANCE:

- Regular cleaning of fixture with proper and gentle care using a soft duster, soft lint-free or damp cloth is recommended.
- Refrain from using harsh cleaning liquids that may cause chemical reaction on the hand painted finishes.
- Always refer to the Assembly Instruction before removing any components.
- HANDLE WITH CARE.

ASSEMBLY & INSTALLATION INSTRUCTIONS

MODEL: 527455OWL
8 LIGHT PENDANT

PARTS LIST

IMAGE	PARTS NAME	QTY
	Mounting Plate	1 PC
	Hex Nut	2 PCS
	Star Washer	1 PC
	Canopy	1 PC
	Swivel	1 PC
	CENTER STEM (6"(1), 12"(1) AND 24(1)) , CLUSTER STEM (9-1/2"(1))	1 SET
	Threaded Nipple	1 PC
	Hang Straight	1 PC
	Leaf Holder Ring	1 PC
	Bottom Leaf 1	1 PC
	Bottom Leaf 2	1 PC
	Ball Nut	1 PC