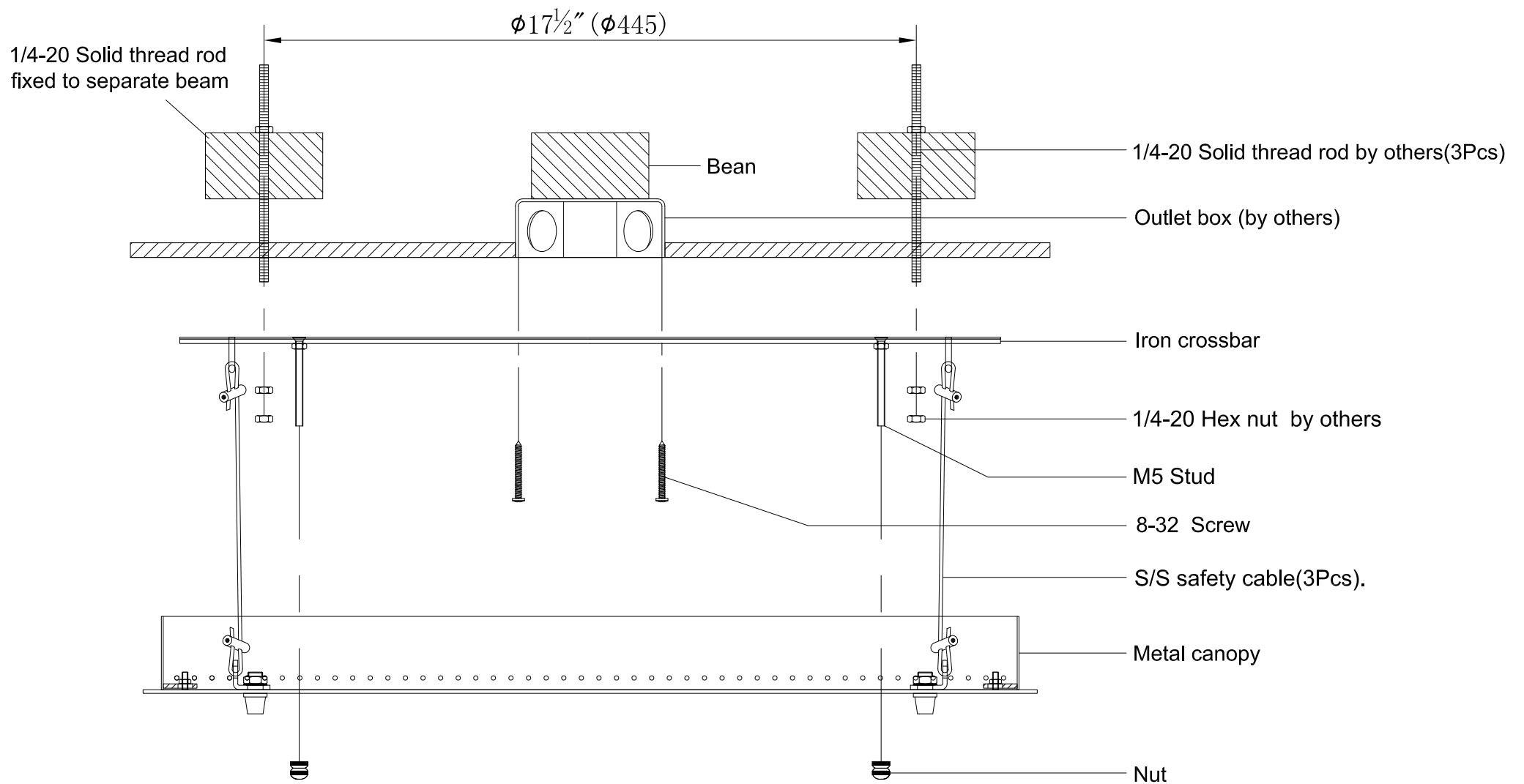


If you have any questions or problems assembling your fixture please call us for assistance. Customer Service:(702)361-4345 or (800)525-2655, customer.services@kalco.com

**WARNING - TO REDUCE THE RISK OF FIRE OR INJURY:**

- 1.If you are unfamiliar with electrical wiring, call a qualified electrician to install this unit. More than one person may be necessary to install fixture, make sure you have enough qualified help.
- 2.Turn off the power to the fixture's circuit at the service panel. Use a voltage detector to verify that the power is off.
- 3.DO NOT install bulb which exceeds the maximum wattage specified on the socket label.
- 4.This product must be installed in accordance with the applicable installation code by a person familiar with the construction and operation of the product and the hazards involved.



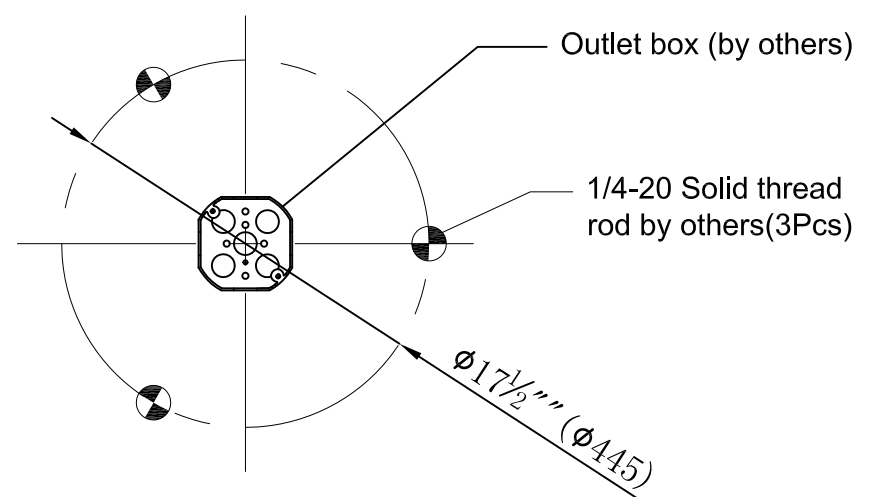
**Note:** Please adjust the color temperature of tape light before installing canopy!

## INSTALL CANOPY AS FOLLOWS

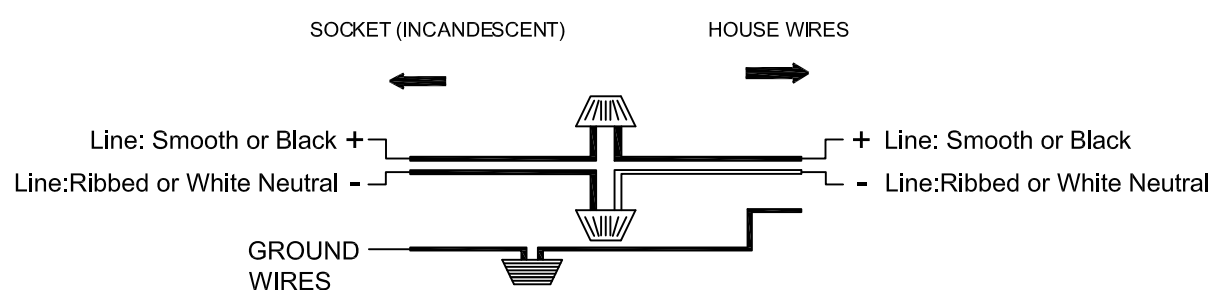
**CAUTION:** Be sure power is off at the main breaker box prior to installation.

- 1.Use 1/4-20 Solid thread rod and 8-32 Screw to fix mounting block on j-box.
- 2.Use part nut to fix part metal canopy onto part M5 Stud .

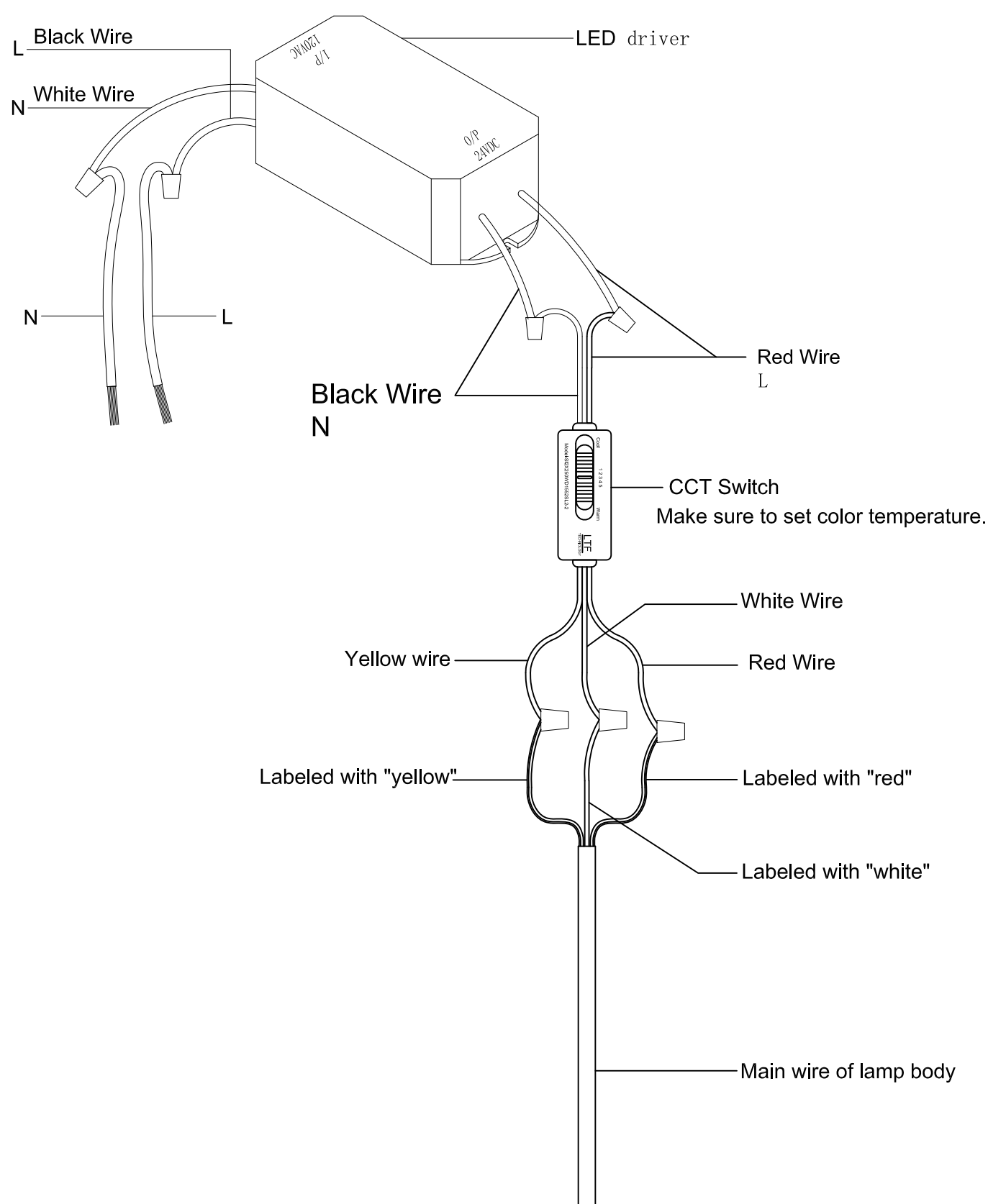
1/4-20 Solid Thread rod distribution view



**Wiring Diagram**

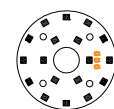
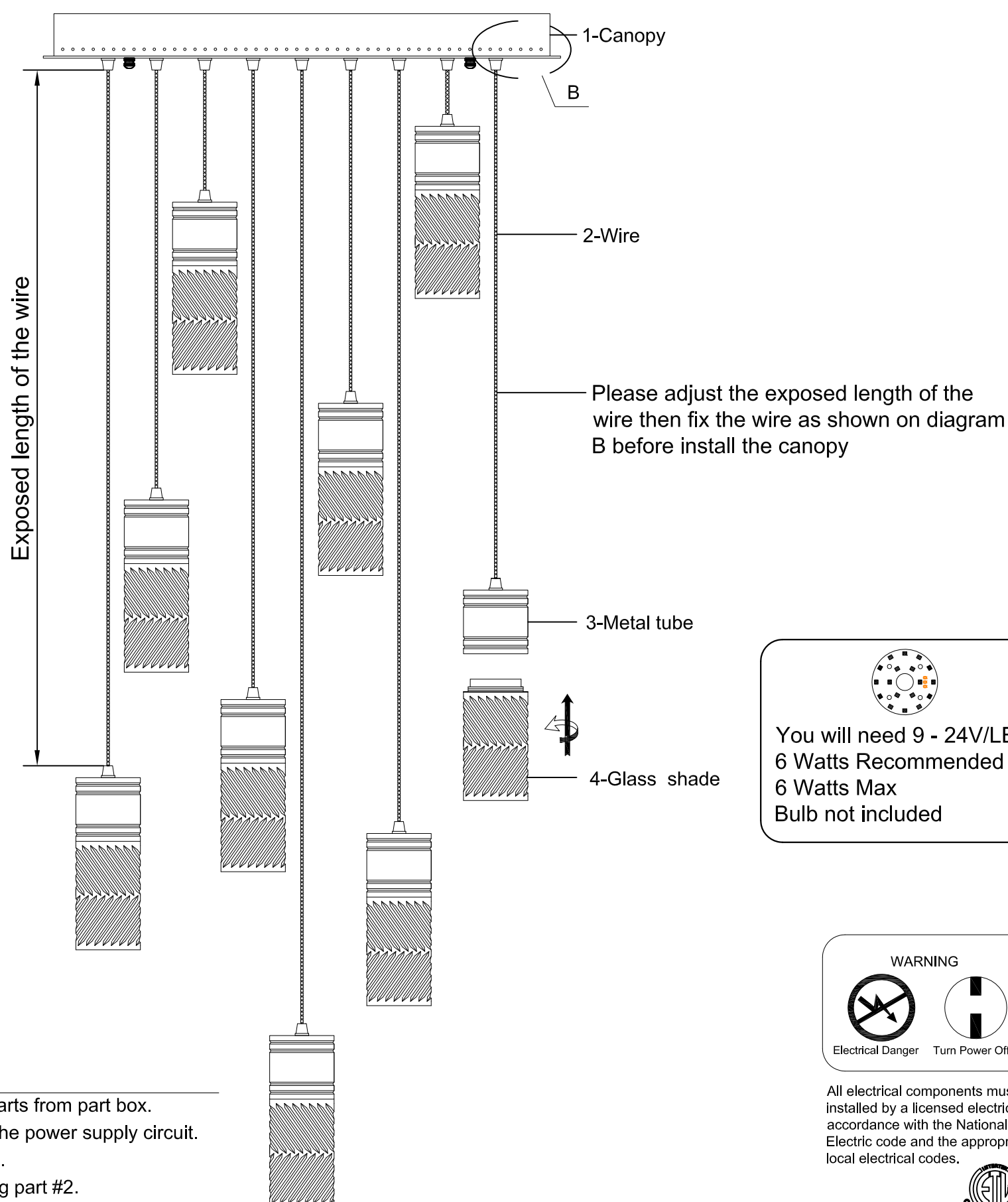
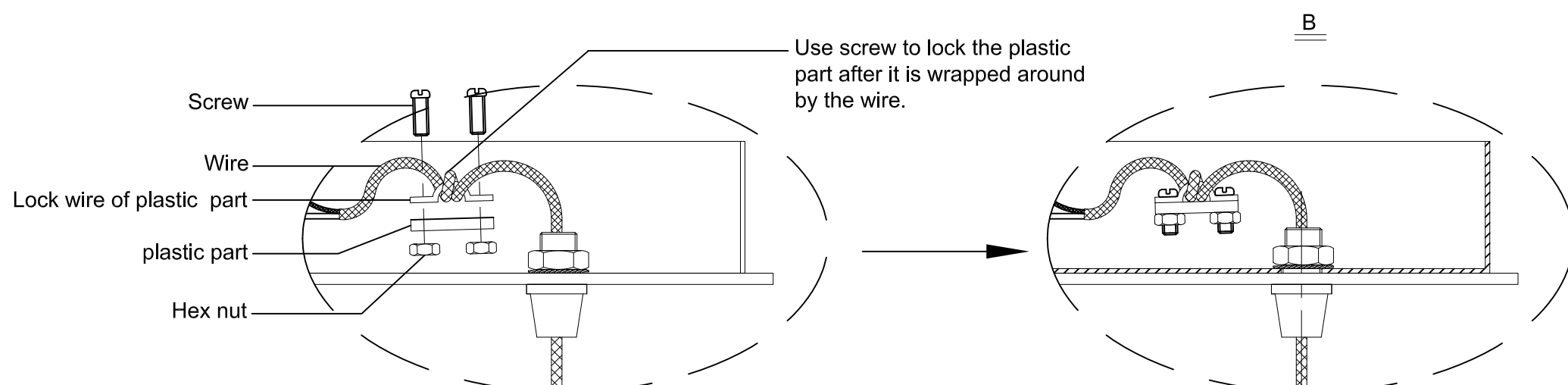


## Wire connecting view



Note: Please adjust the color temperature of tape light before installing canopy!

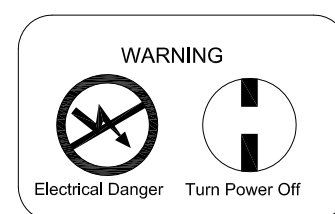
| SWITCH POSITIONS |          |          |          |          |
|------------------|----------|----------|----------|----------|
| 1                | 2        | 3        | 4        | 5        |
| RP CCT 1         | RP CCT 2 | RP CCT 3 | RP CCT 4 | RP CCT 5 |
| 4000K            | 3500K    | 3000K    | 2900K    | 2700K    |



You will need 9 - 24V/LED panel  
6 Watts Recommended  
6 Watts Max  
Bulb not included

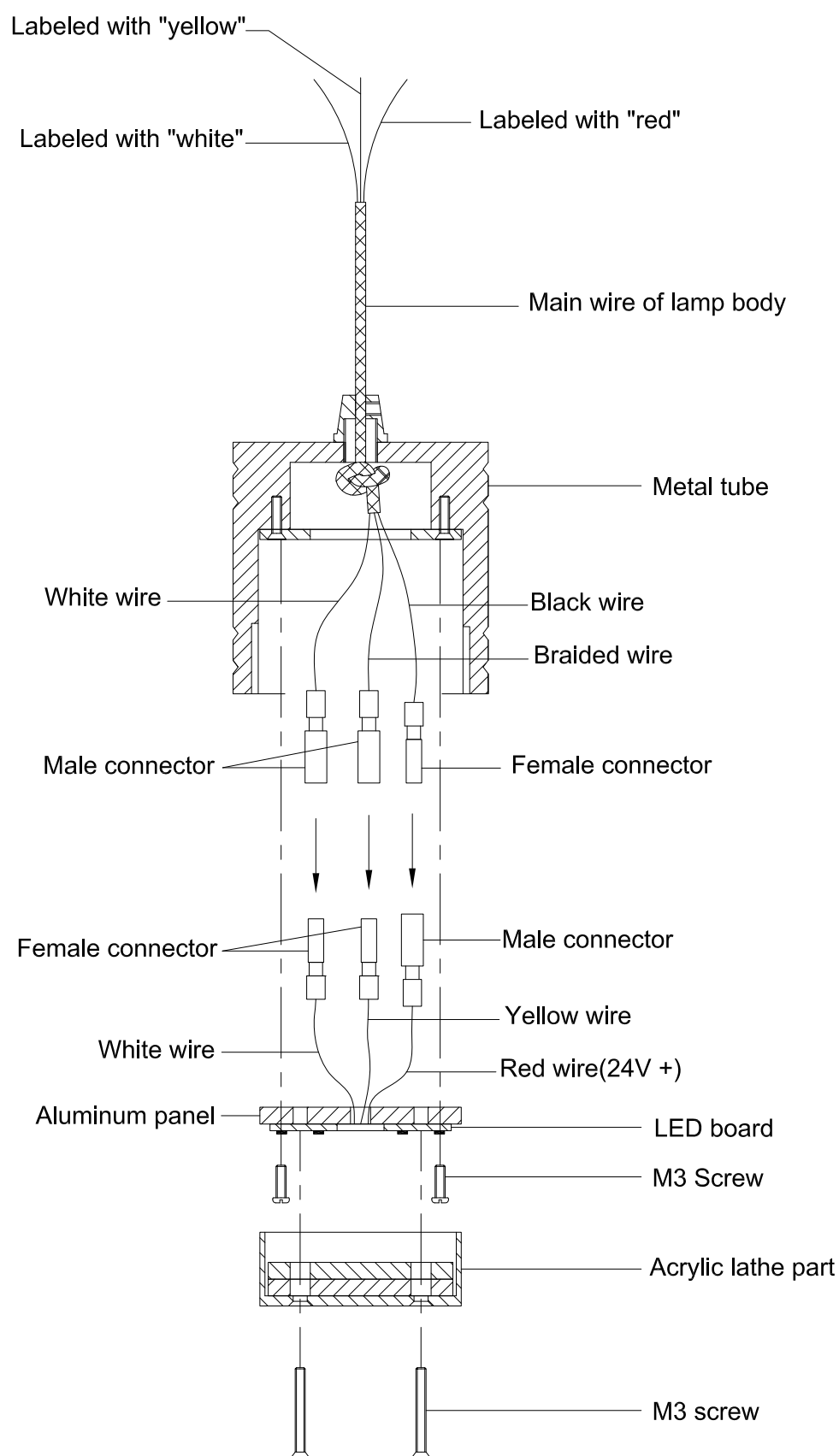
## INSTALLATION

- Turn off electricity, take all parts from part box.
- Connect the main wire with the power supply circuit.  
See wire connection diagram.
- Fix part #3 to part #1 by using part #2.
- Screw part #4 to part #3.
- Check the installation and attach bulb into lamp holder.



All electrical components must be installed by a licensed electrician in accordance with the National Electric code and the appropriate local electrical codes.





## Steps for replacing LED boards

- Remove glass shade.
- Remove M3 grub screw, then remove acrylic lathe part.
- Remove M3 grub screw, then remove LED board from metal tube.
- Unplug quick connector.
- Use quick connector to connect new LED board with fixture main wire as shown on diagram.
- Connect LED board red wire with black wire of fixture main wire, and connect LED board white wire with white wire of fixture main wire, and connect LED board yellow wire with braided wire of fixture main wire.
- Connect all wires, then tuck all wires and quick connectors inside the metal tube.
- Use M3 grub screw to lock LED board inside the metal tube.
- Use M3 grub screw to lock acrylic lathe part on the aluminum panel.
- Rotate the glass shade on the metal tube.

