

MILLIMETRO

design Daniel Rybakken

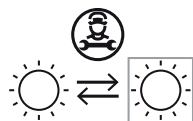
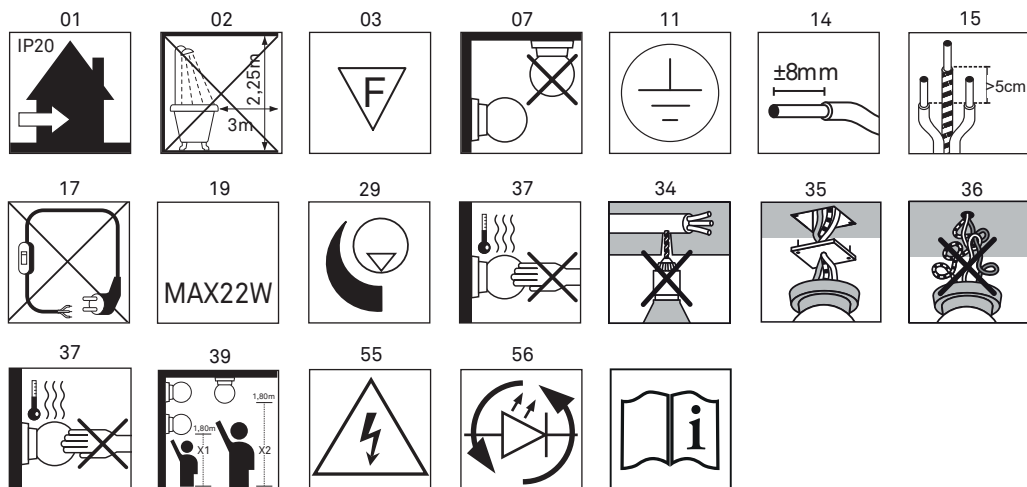


**LUCE
PLAN**

A11



A11A25



ATTENTION / ATTENZIONE / ACHTUNG / ATTENTION / ATENCIÓN:

Do not place the disc on surfaces that may scratch it.
The disc should only be handled with the appropriate tools.
Remove disk protection after installation.

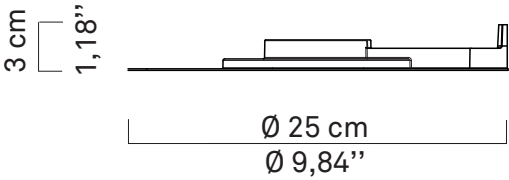
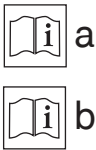
Non appoggiare il disco su superfici che lo possano graffiare.
Il disco va manipolato solo con gli appositi guanti.
Rimuovere la protezione del disco a fine installazione.

Legen Sie die Scheibe nicht auf Oberflächen, die sie zerkratzen könnten.
Die Scheibe sollte nur mit geeigneten Handschuhen angefasst werden.
Entfernen Sie nach der Installation die Abdeckung der Scheibe.

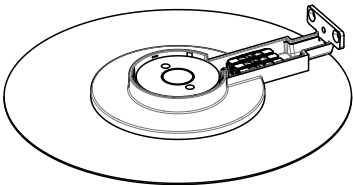
N'appuyez pas le disque sur des surfaces qui pourraient le rayer.
Le disque doit être manipulé uniquement avec les gants appropriés.
Retirez la protection du disque lorsque l'installation est terminée.

No apoye el disco en superficies que lo puedan rayar.
El disco debe ser manipulado solo con los guantes adecuados.
Remueva la protección del disco cuando termine la instalación.

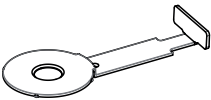
A11A25



X1



X1



X1



X2

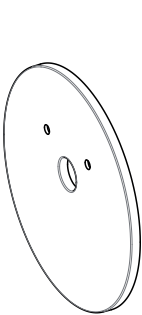
kg 0,3kg

lb 0,6 lb

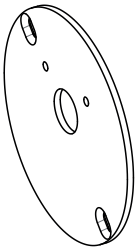
A11 /6



X2



X1

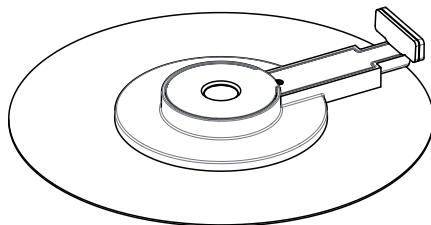


X1

kg 0,1kg

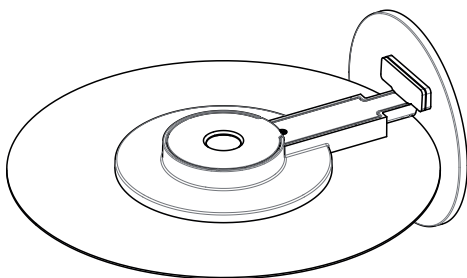
lb 0,2 lb

1 A11A25



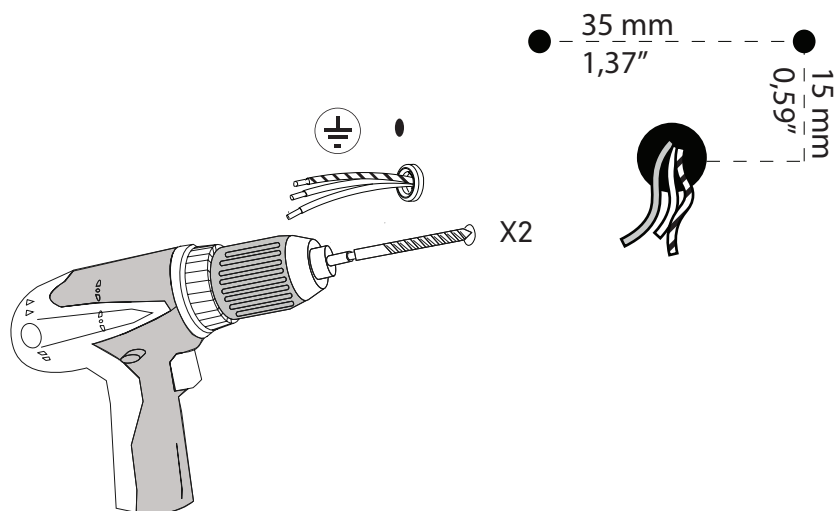
➔ Pag.5

A11A25+A11/6

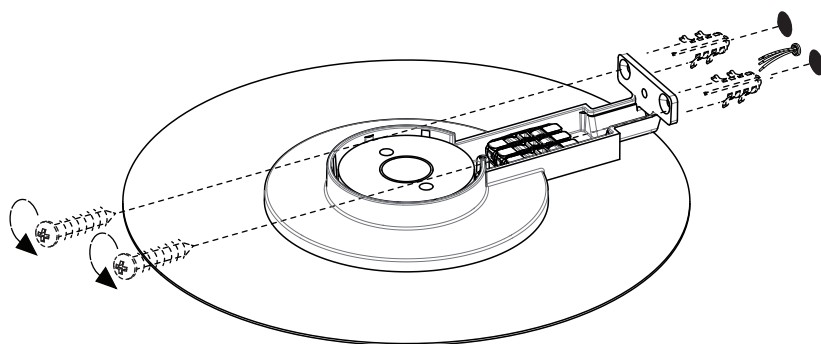


➔ Pag.8

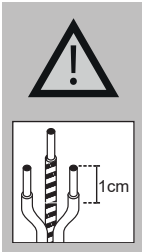
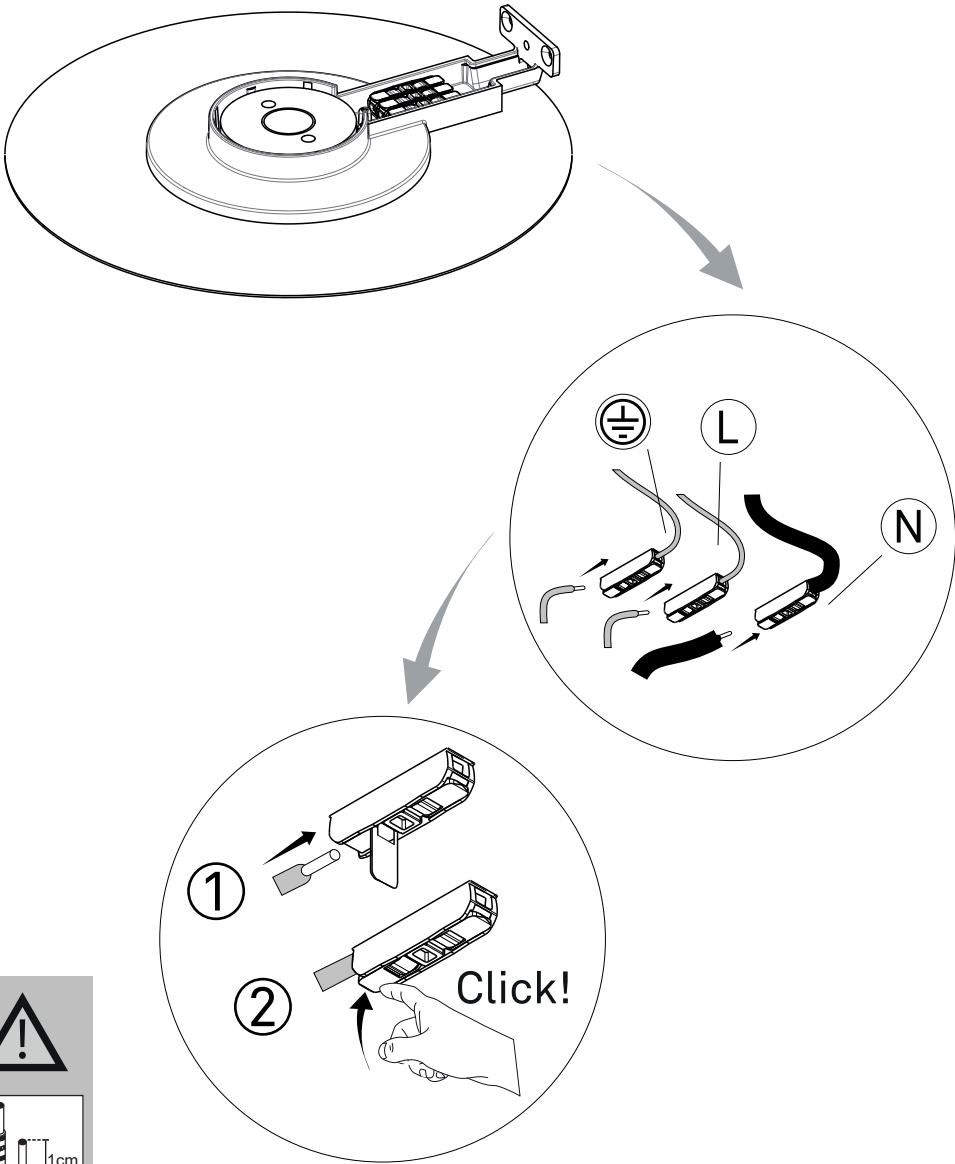
1.1



1.2 A11A25

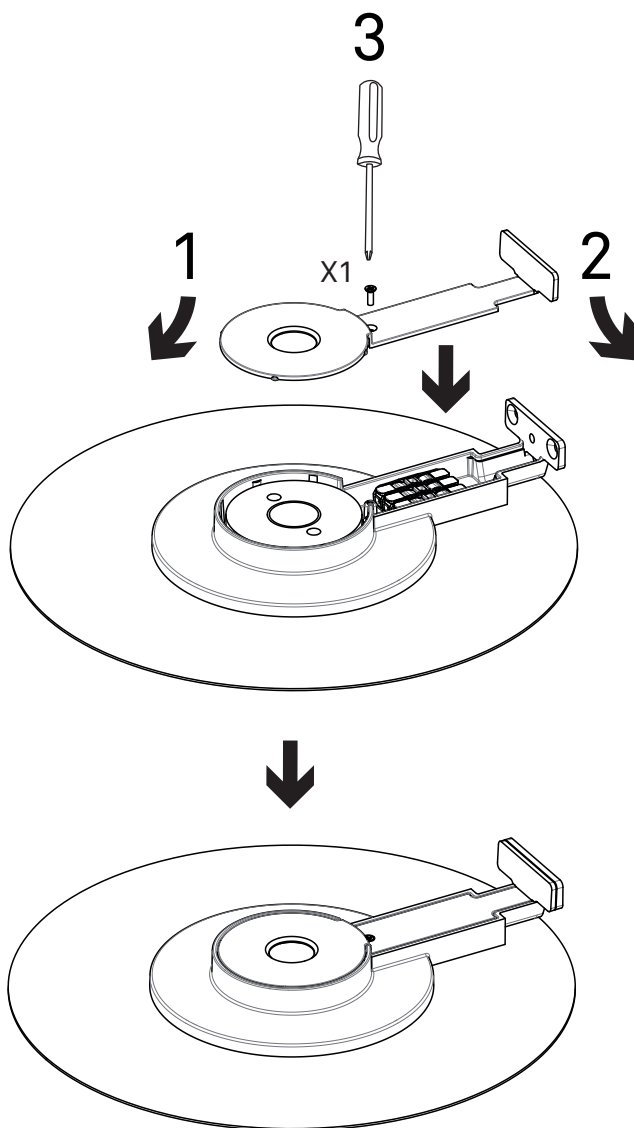


1.3

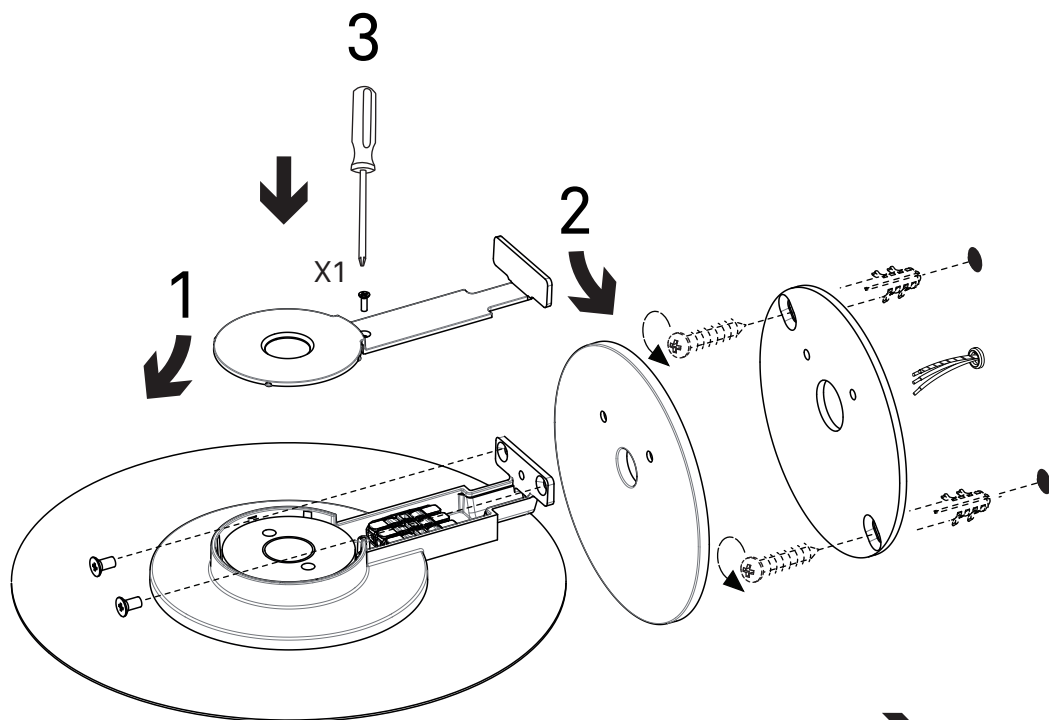


2

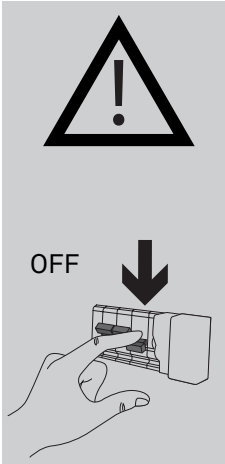
A11A25



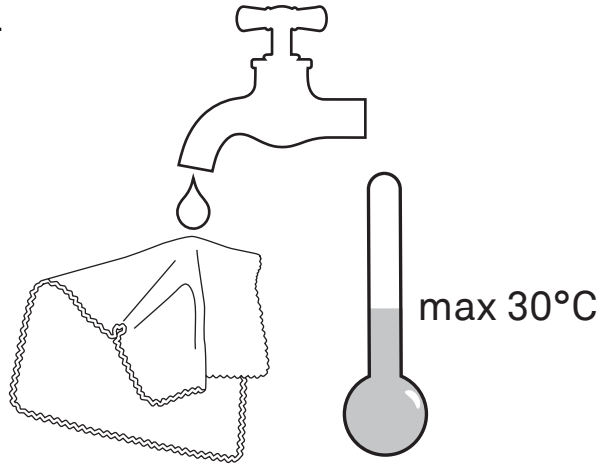
1.2 A11A25+A11/6



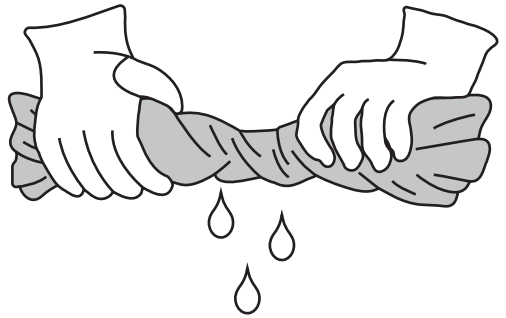
➔ Pag.6



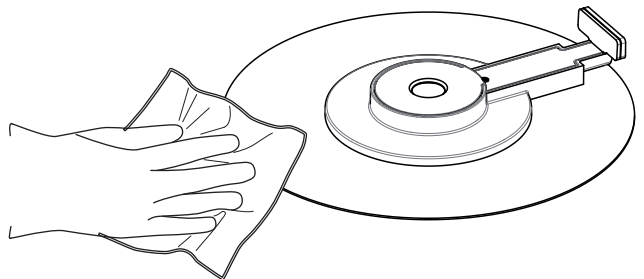
1.



2.



3.



ECODESIGN

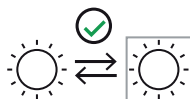
SYMBOL LEGEND

LEGENDA DEI SIMBOLI

ERLÄUTERUNG DER SYMBOLE

LEGENDE DES SYMBOLES

LEYENDA DE LOS SIMBOLOS



Replaceable ight source by end-user
 Fonte luminosa sostituibile dal cliente finale
 Austauschbare Lichtquelle durch den Endanwender
 Source lumineuse remplaçable par l'utilisateur final
 Fuente de luz reemplazable por el usuario final



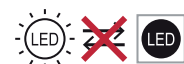
Replaceable light source by a professional
 Fonte luminosa sostituibile da un professionista
 Austauschbare Lichtquelle durch einen Fachmann
 Source lumineuse remplaçable par un professionnel
 Fuente de luz reemplazable por un profesional



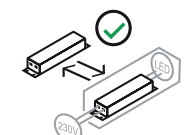
Replaceable (LED only) light source by end-user
 Fonte luminosa (solo LED) sostituibile dal cliente finale
 Austauschbare (nur LED) Lichtquelle durch den Endanwender
 Source lumineuse remplaçable (LED uniquement) par l'utilisateur final
 Fuente de luz reemplazable (sólo LED) por el usuario final



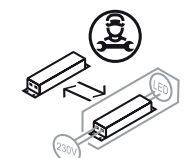
Replaceable (LED only) light source by a professional
 Fonte luminosa (solo LED) sostituibile da un professionista
 Austauschbare (nur LED) Lichtquelle durch einen Fachmann
 Source lumineuse remplaçable (LED uniquement) par un professionnel
 Fuente de luz reemplazable (sólo LED) por un profesional



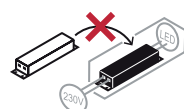
Non-replaceable light source
 Fonte luminosa non sostituibile
 Nicht austauschbare Lichtquelle
 Source lumineuse non remplaçable
 Fuente de luz no reemplazable



Replaceable control gear by a end-user
 Unità di alimentazione sostituibile dal cliente finale
 Austauschbares Vorschaltgerät durch einen Endanwender
 Pièce d'alimentation remplaçable par l'utilisateur final
 Unidad de alimentación reemplazable por el usuario final



Replaceable control gear by a professional
 Unità di alimentazione sostituibile da un professionista
 Austauschbares Vorschaltgerät durch einen Fachmann
 Pièce d'alimentation remplaçable par un professionnel
 Unidad de alimentación reemplazable por un profesional



Non-replaceable control gear
 Unità di alimentazione non sostituibile
 Nicht austauschbares Vorschaltgerät
 Pièce d'alimentation non remplaçable
 Unidad de alimentación no reemplazable





www.luceplan.com

A110IB002