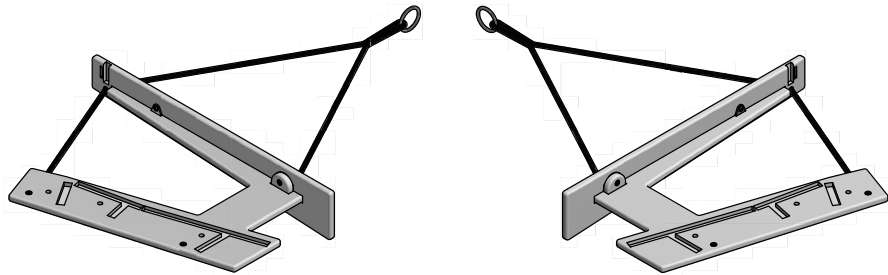
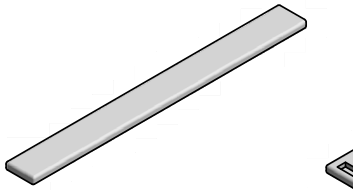


INCLUDED PARTS

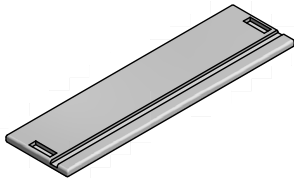


LEFT SIDE
1x

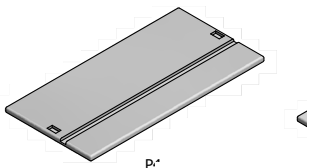
RIGHT SIDE
1x



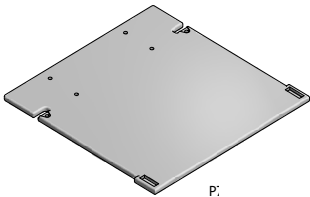
P2
1x



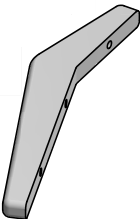
P3
1x



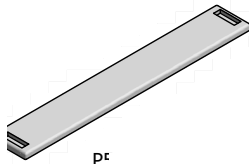
P4
1x



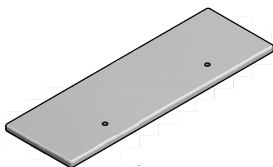
P7
1x



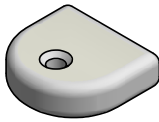
P9
2x



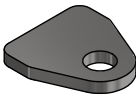
P5
1x



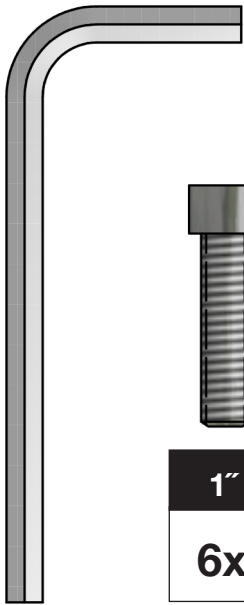
P8
1x



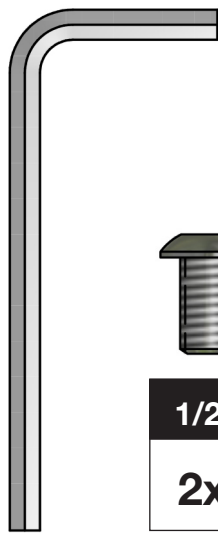
GB
6x



MICRO
2x



1"
6x



1/2"
2x

1"
6x

Bolts & Tools shown actual size.

** Please use included 3/16" Allen Wrench for steps 8-9 only.

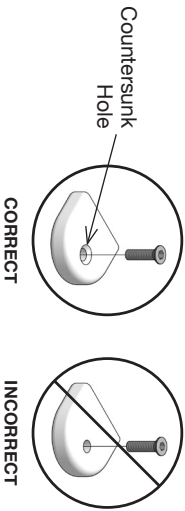
*** Please double check the bolt size required on each step. Use of wrong bolts will result in damage of product.***

ASSEMBLY TIPS: 5 Important Points You **NEED** to Read

1. Prior to beginning assembly, please inspect and inventory the parts to make sure you have everything and that nothing was damaged during shipping. If damage has occurred, please take photos and go to lolldesigns.com/damage. Rest assured we'll get it taken care of straight away!
2. To avoid scratching furniture, assemble on a clean, soft surface like a blanket, carpet, or the flattened cardboard box the furniture was shipped in.
3. **Start all bolts by hand to ensure proper alignment and to prevent cross threading.** Then using the provided tool, tighten until you feel resistance. Do not overtighten.
4. Bolts should not be forced, but some components, particularly blocks, fit snug but can still be installed without tools or excess force.
5. If parts are still not going together, please send us a photo of the part you are having trouble with.

BLOCK & BOLT INSTALLATION

Insert bolts through countersunk hole side of blocks as shown below.



♻️ RECYCLE THE PACKAGING

We've gone through great lengths to make as much of our packaging as possible recyclable. The cardboard box, paper wrap, filler and paper bags can all go in your recycling bin. The muslin hardware bags replaced plastic bags with the intention of reducing plastic and encouraging reuse. Lolli Designs and Planet Earth thank you!

WE WANT YOU TO LOVE YOUR LOLL

For more info and visual aids, watch the assembly videos at www.lolldesigns.com/videos
For product care & maintenance, visit www.lolldesigns.com/care-maintenance
For further lollygagging assistance, please reach out!

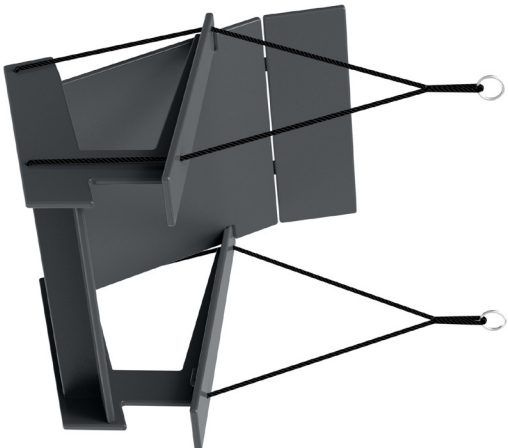
+1 877-740-3387
sales@lolldesigns.com

5912 Waseca Street
Duluth, Minnesota 55807

"*Lolli Designs inspires people to appreciate the outdoors.*"
Greg Benson - Founder

ASSEMBLY INSTRUCTIONS & PRODUCT INFO:

LOLLYGAGGER SWING



MADE IN THE USA



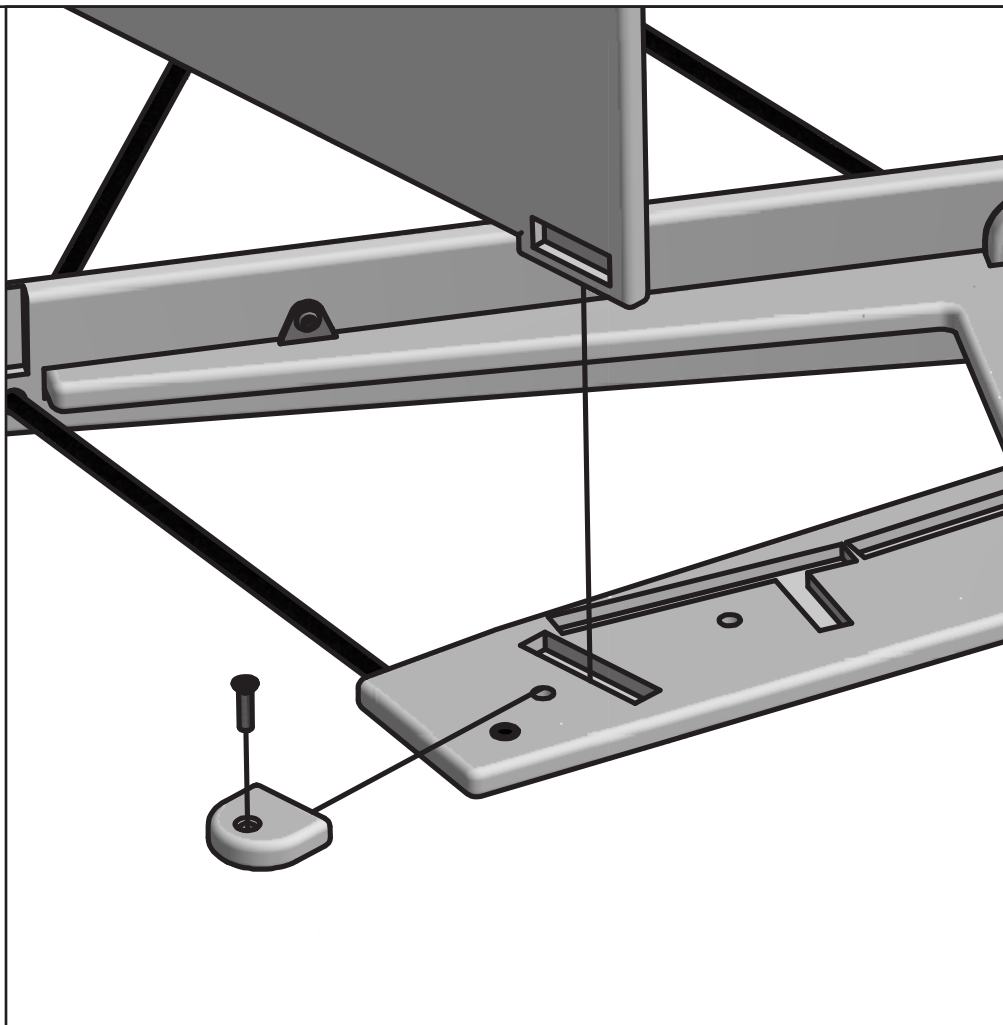
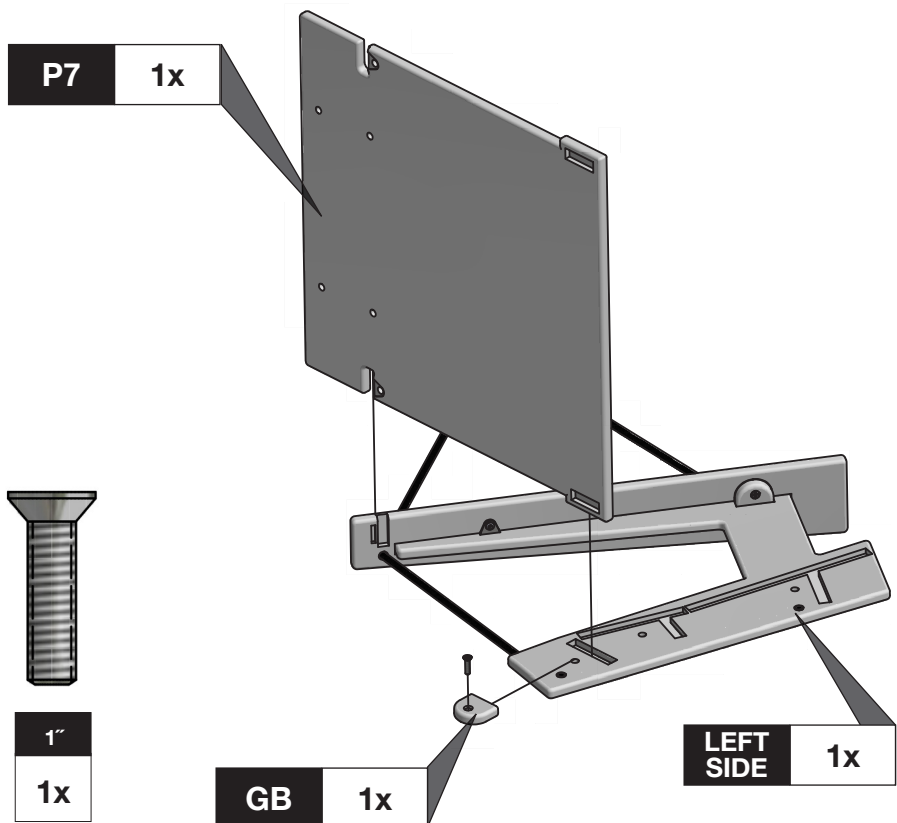
100% ORIGINAL Member

1% FOR THE PLANET MEMBER #610

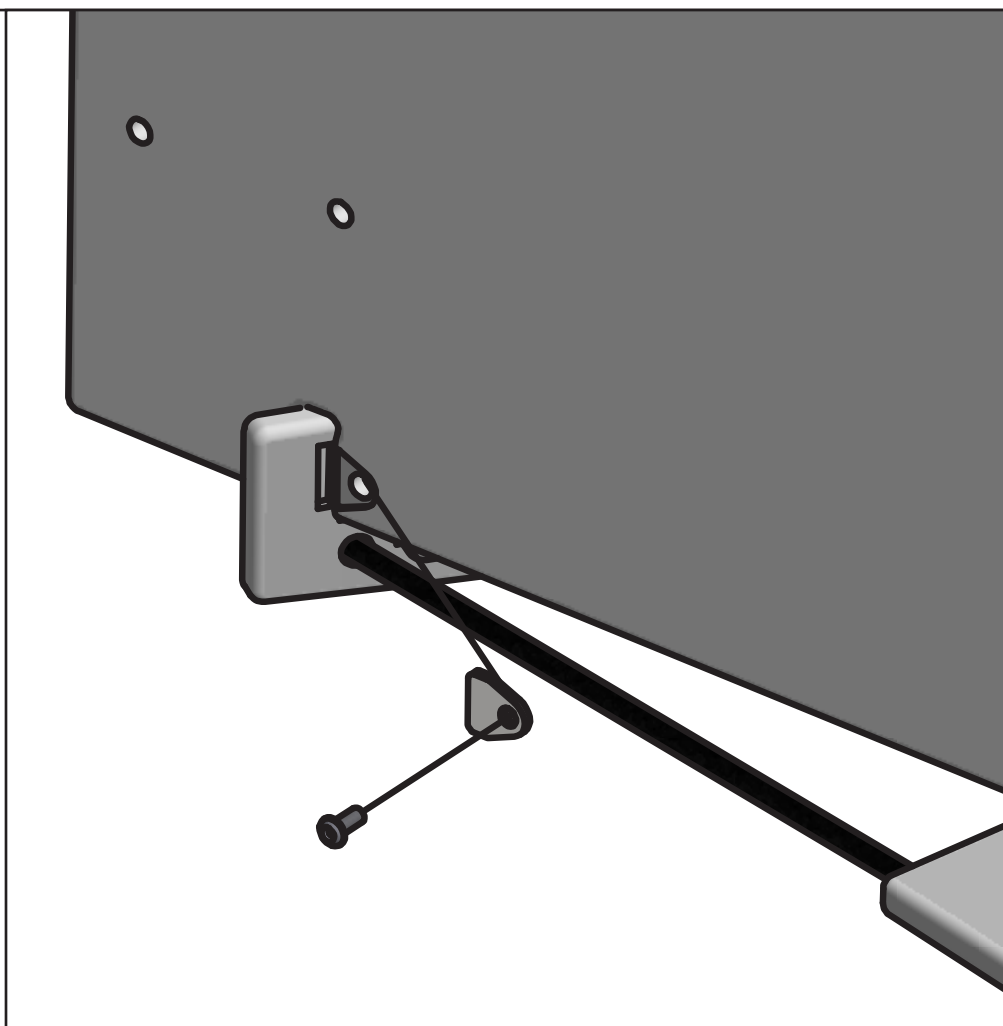
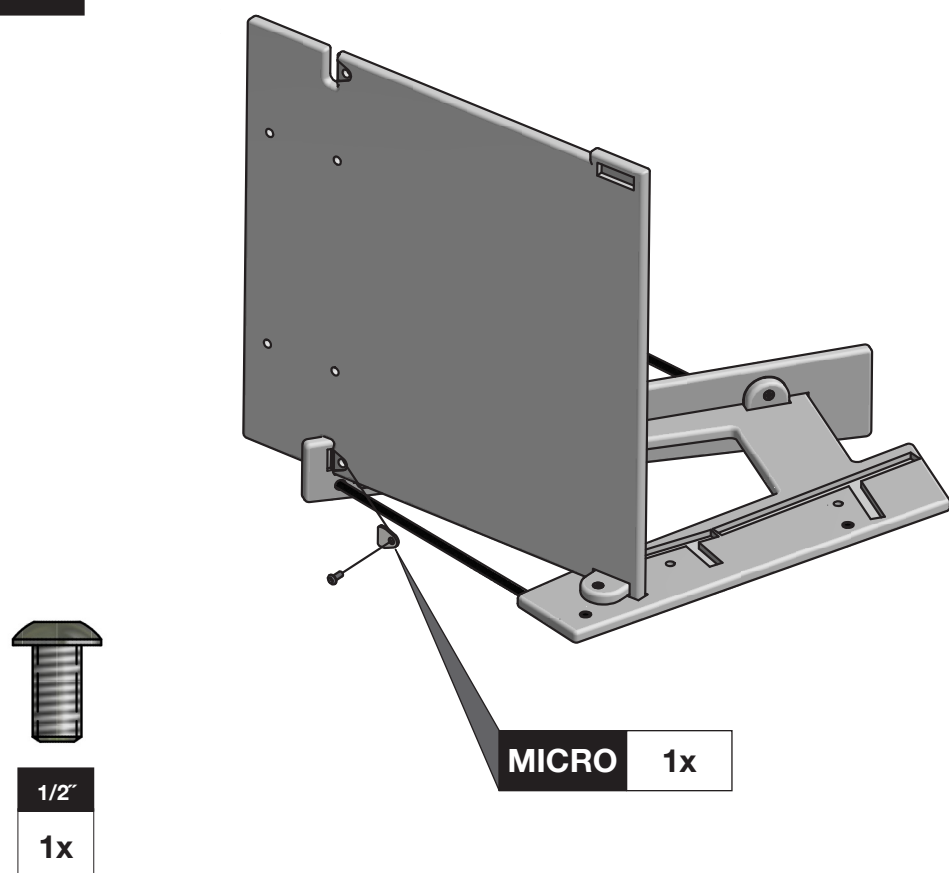
it's good to be recycled



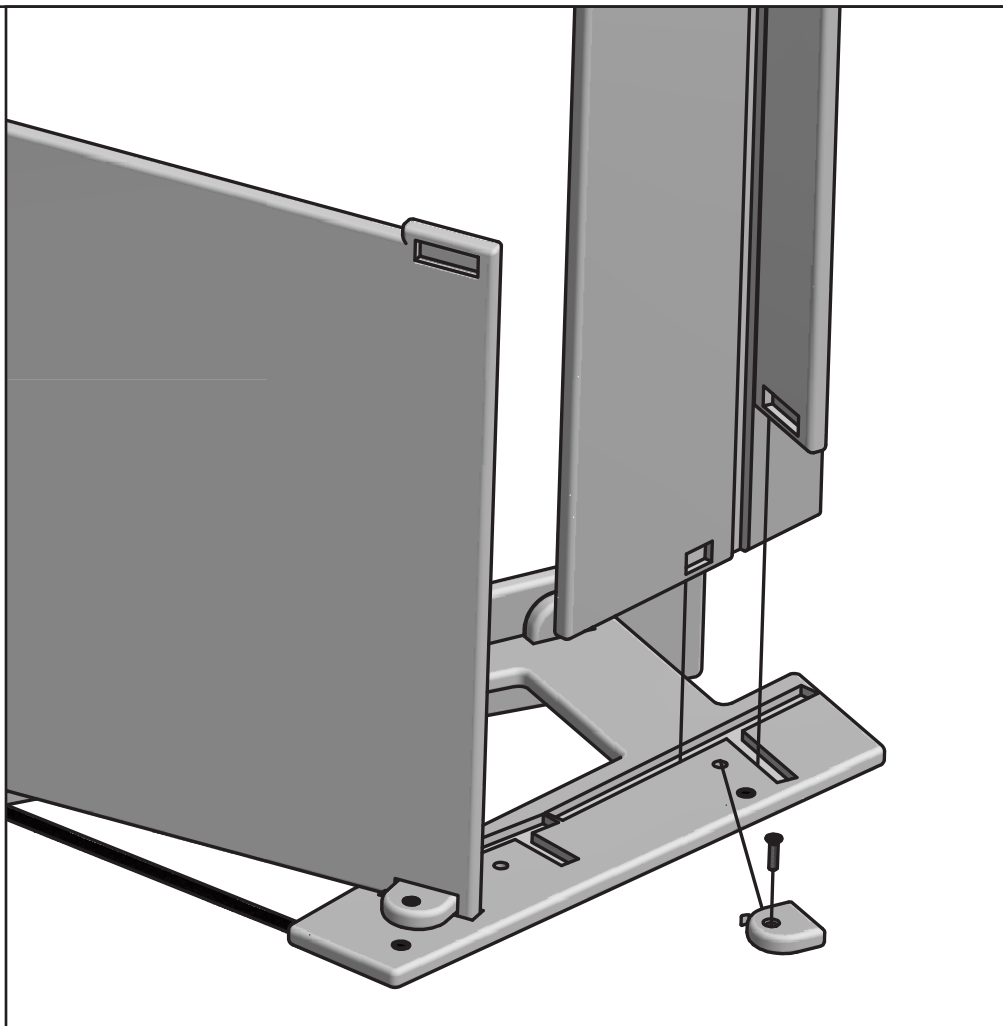
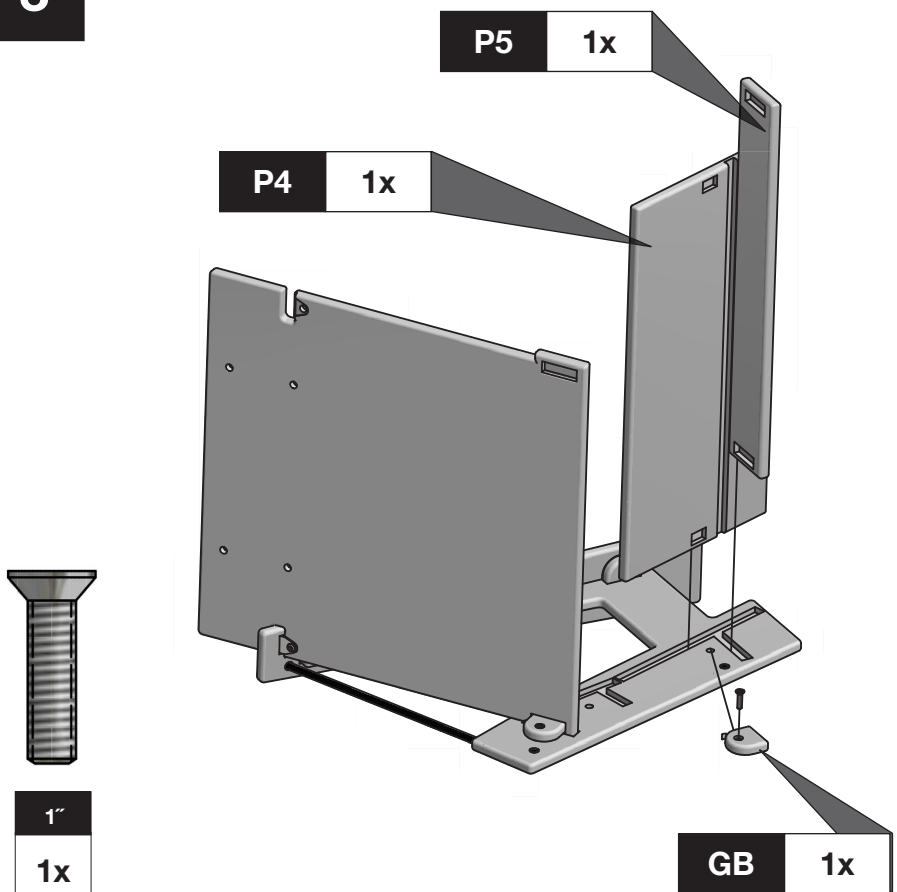
1



2



3



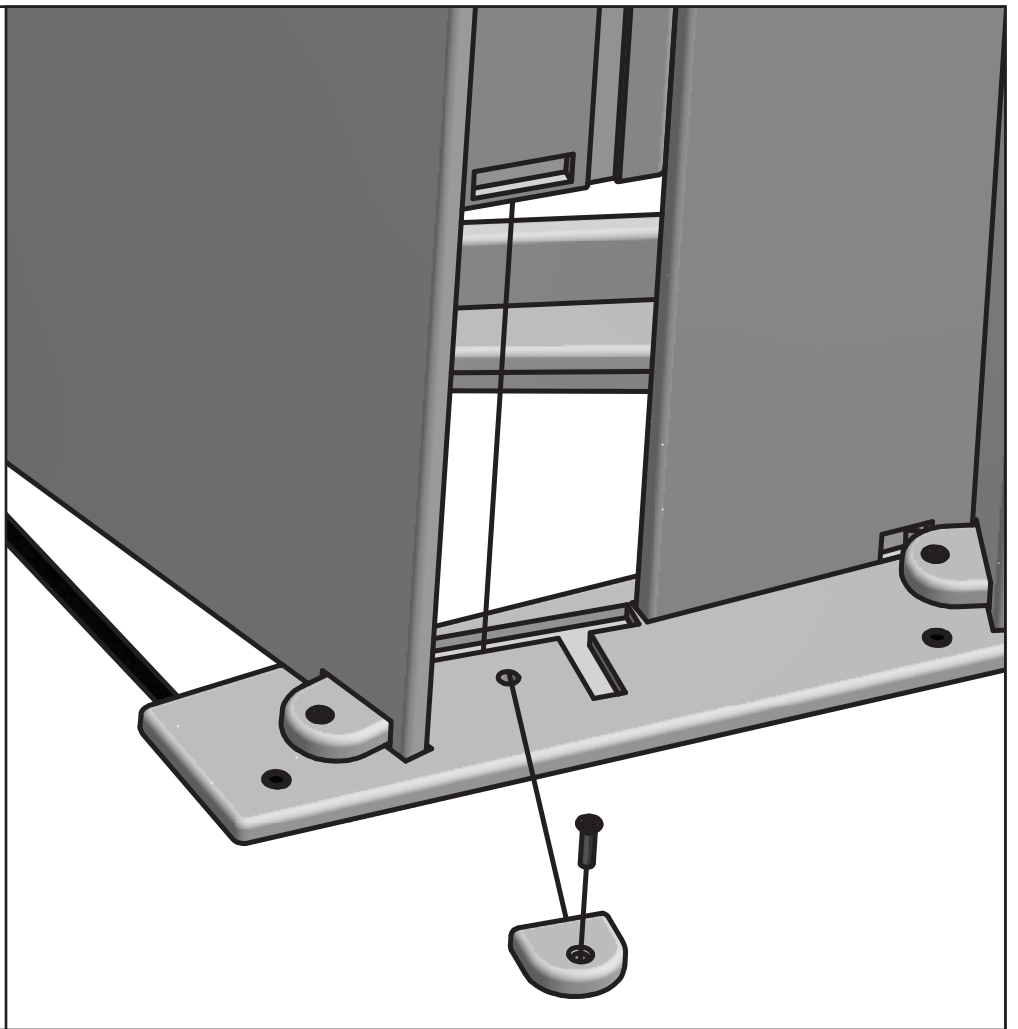
4

P3 1x

GB 1x

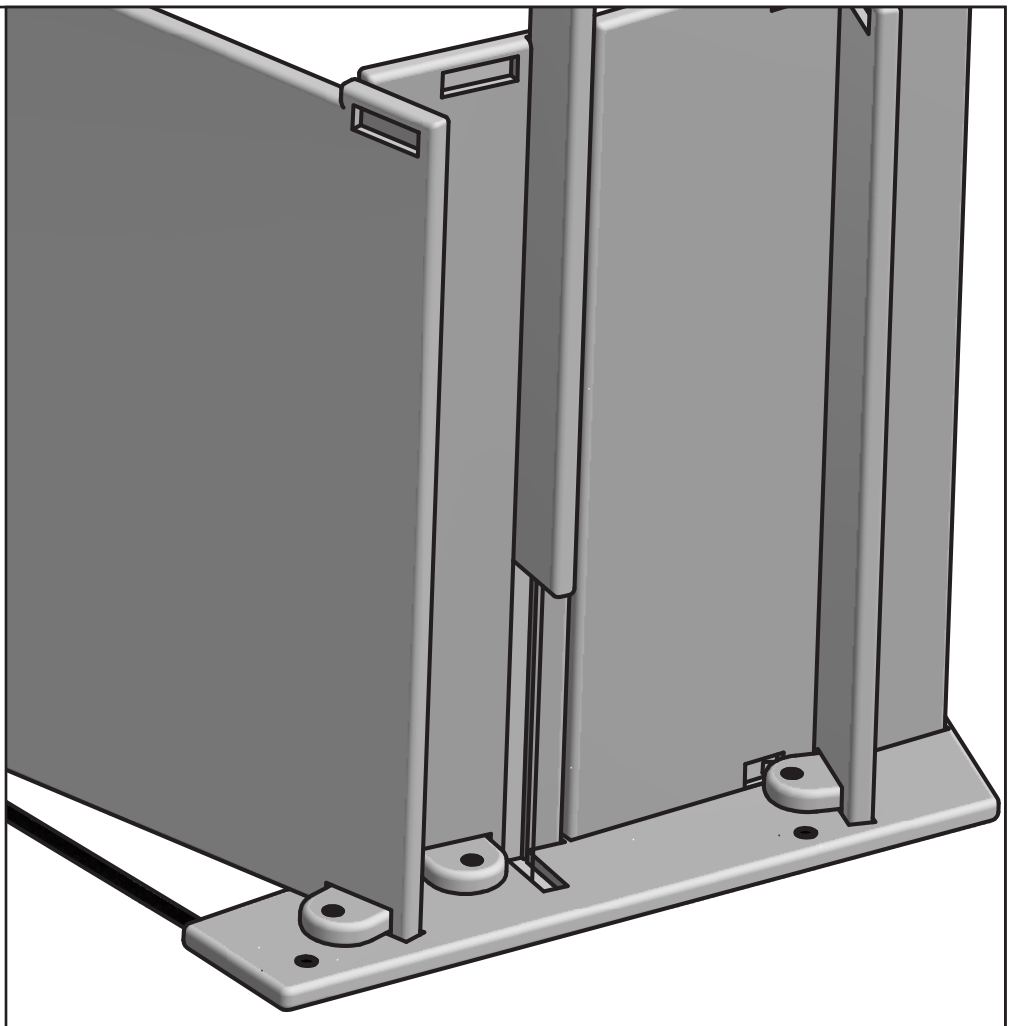
1"

1x



5

P2 1x



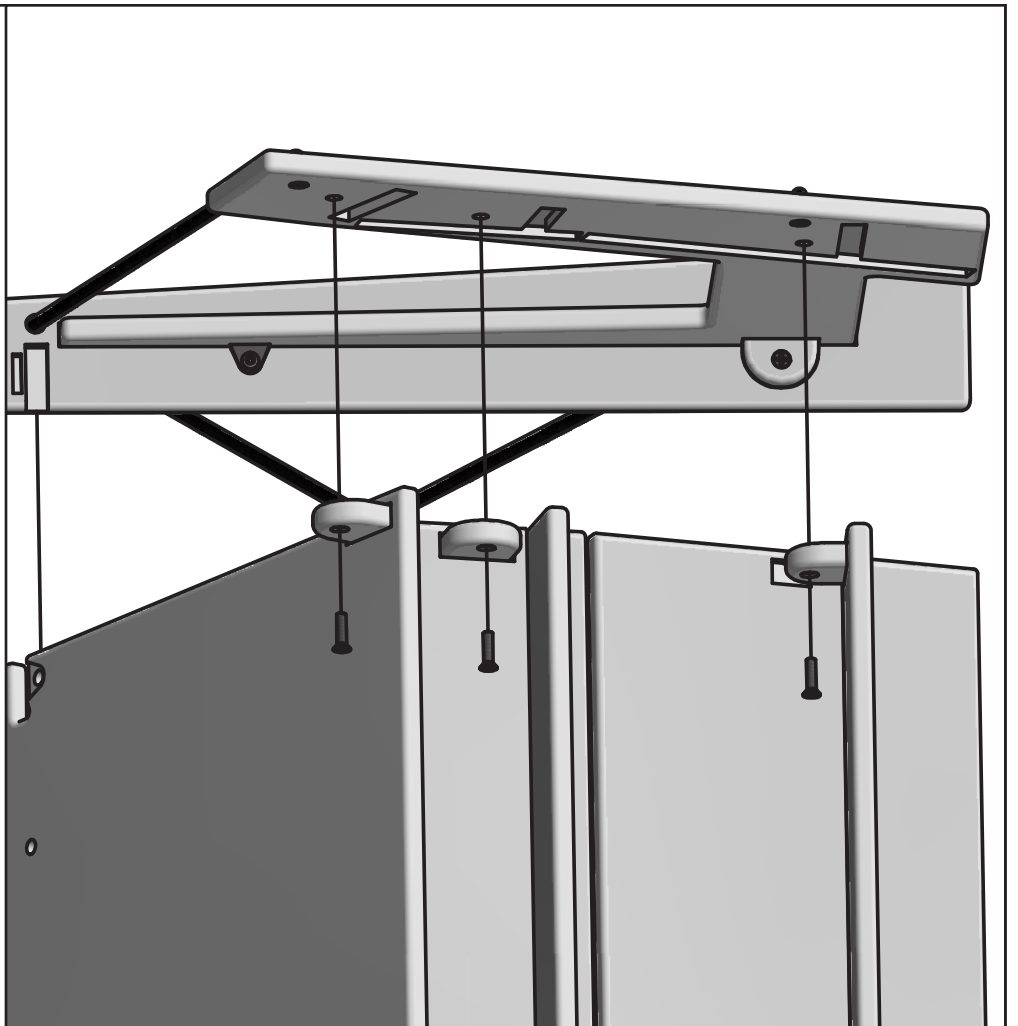
6

RIGHT SIDE 1x

GB 3x

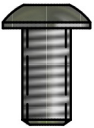
1"

1x



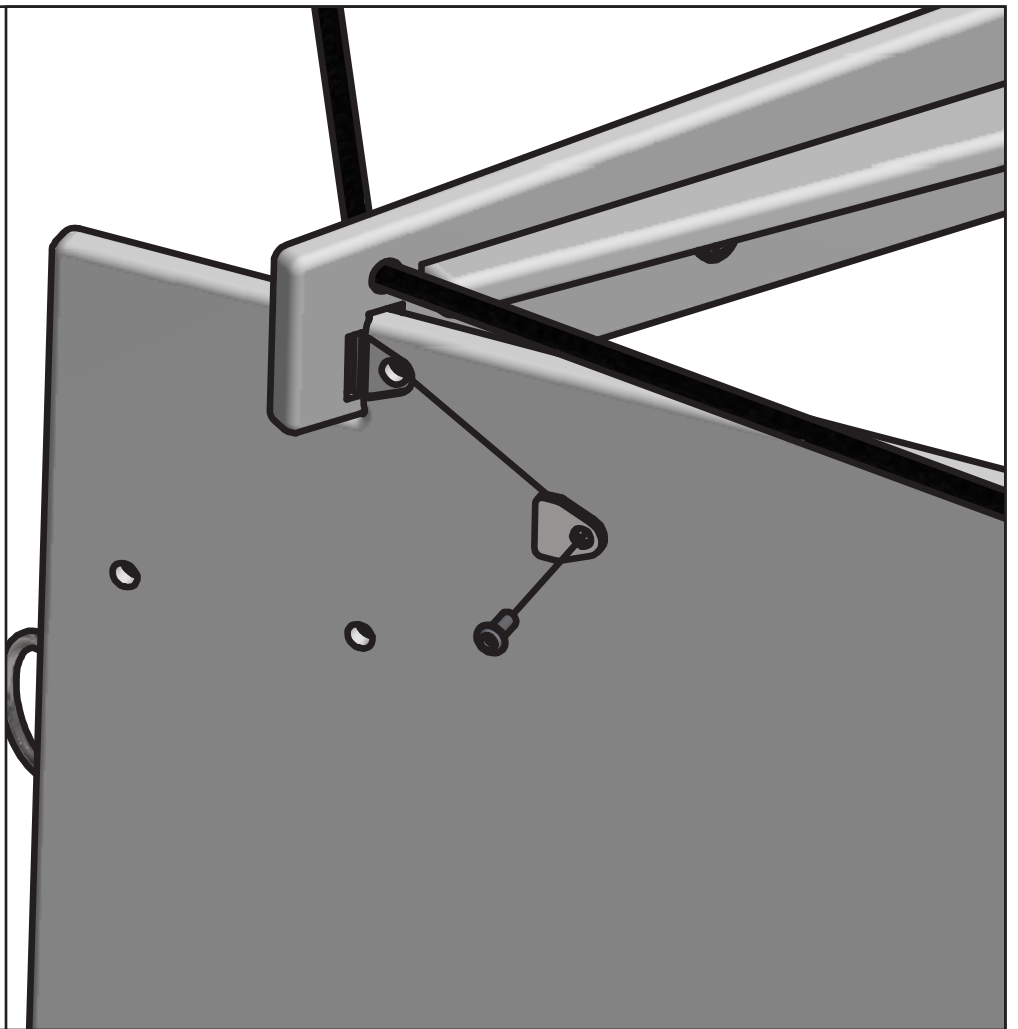
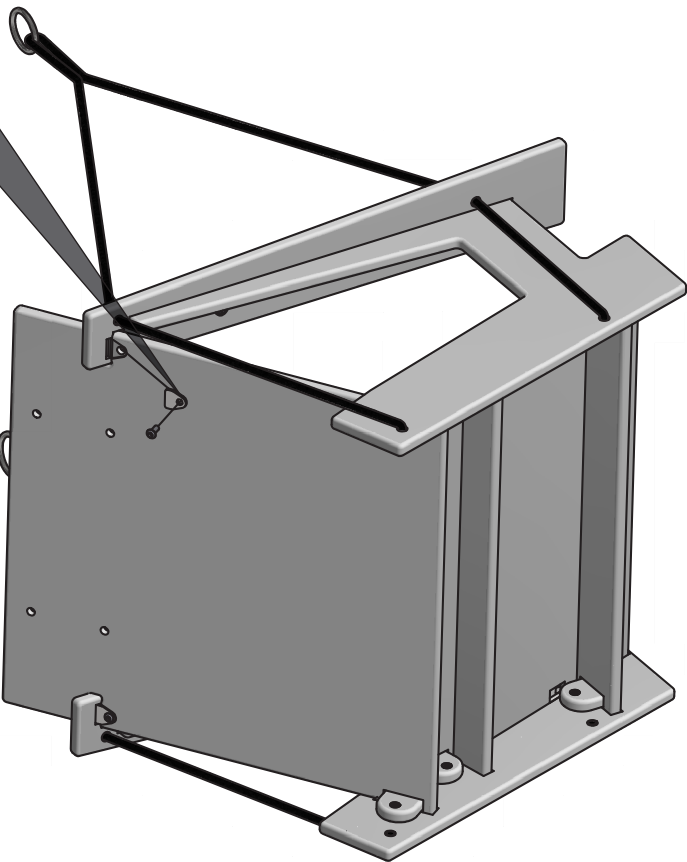
7

MICRO 1x



1/2"

1x



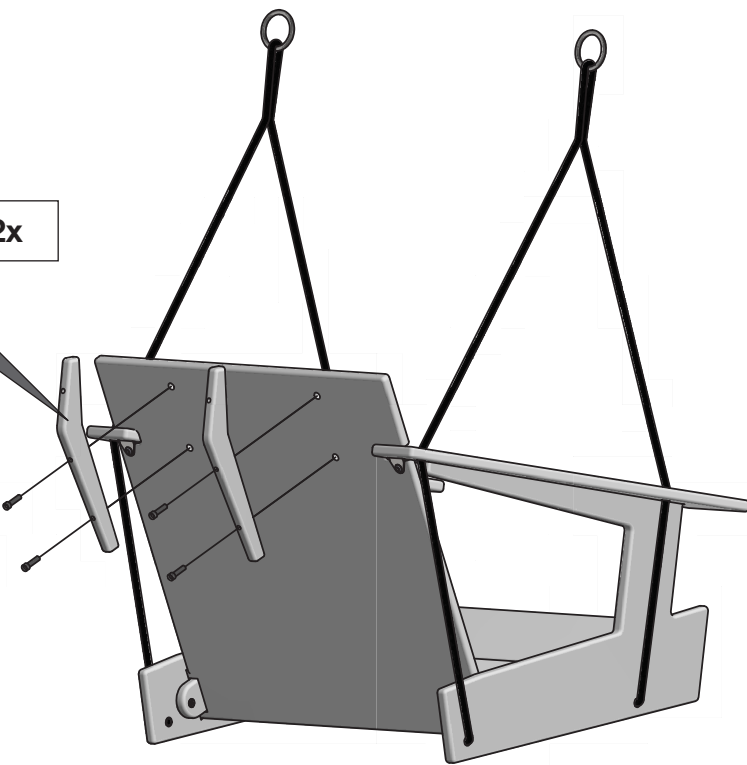
8

P9 2x

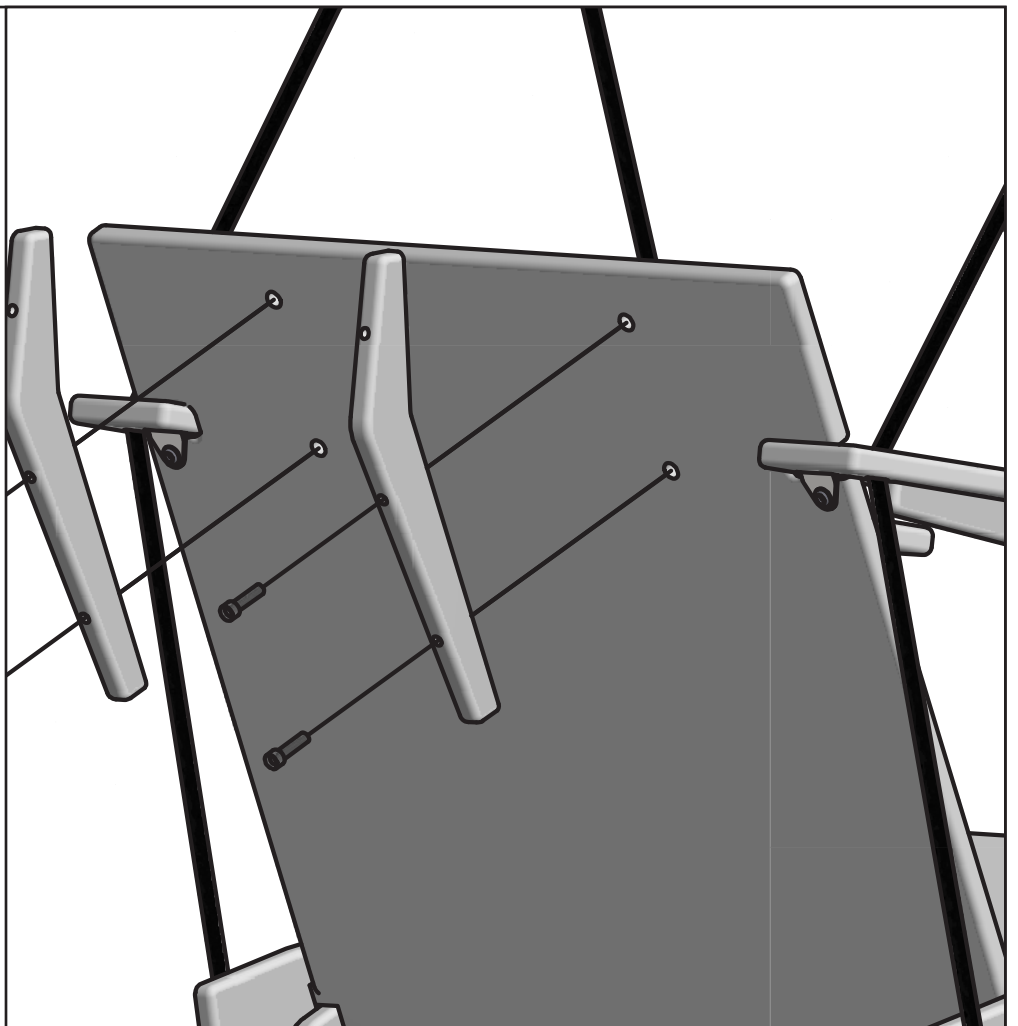


1"

4x

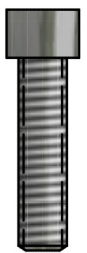


***Caution:**
Tighten bolts until parts are drawn tight together and stop.
Do not overtighten bolts.
**** Please use included 3/16" Allen Wrench for step 8.**



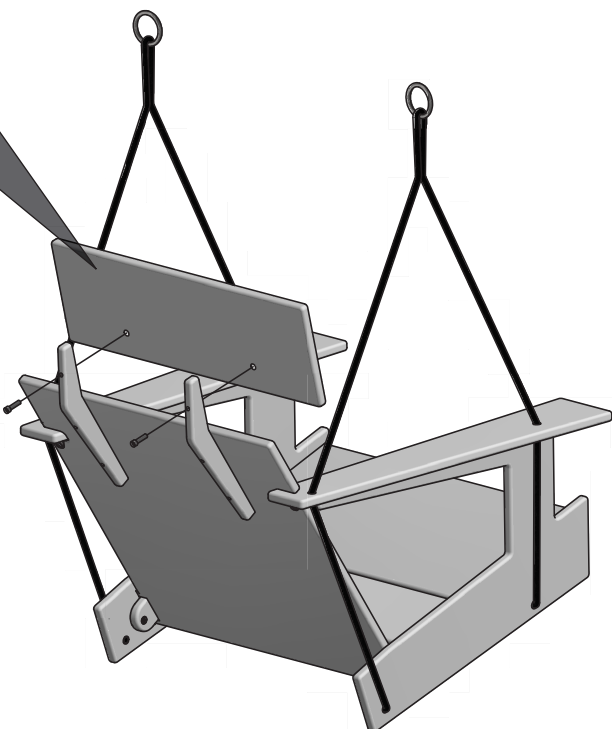
9

P8 1x

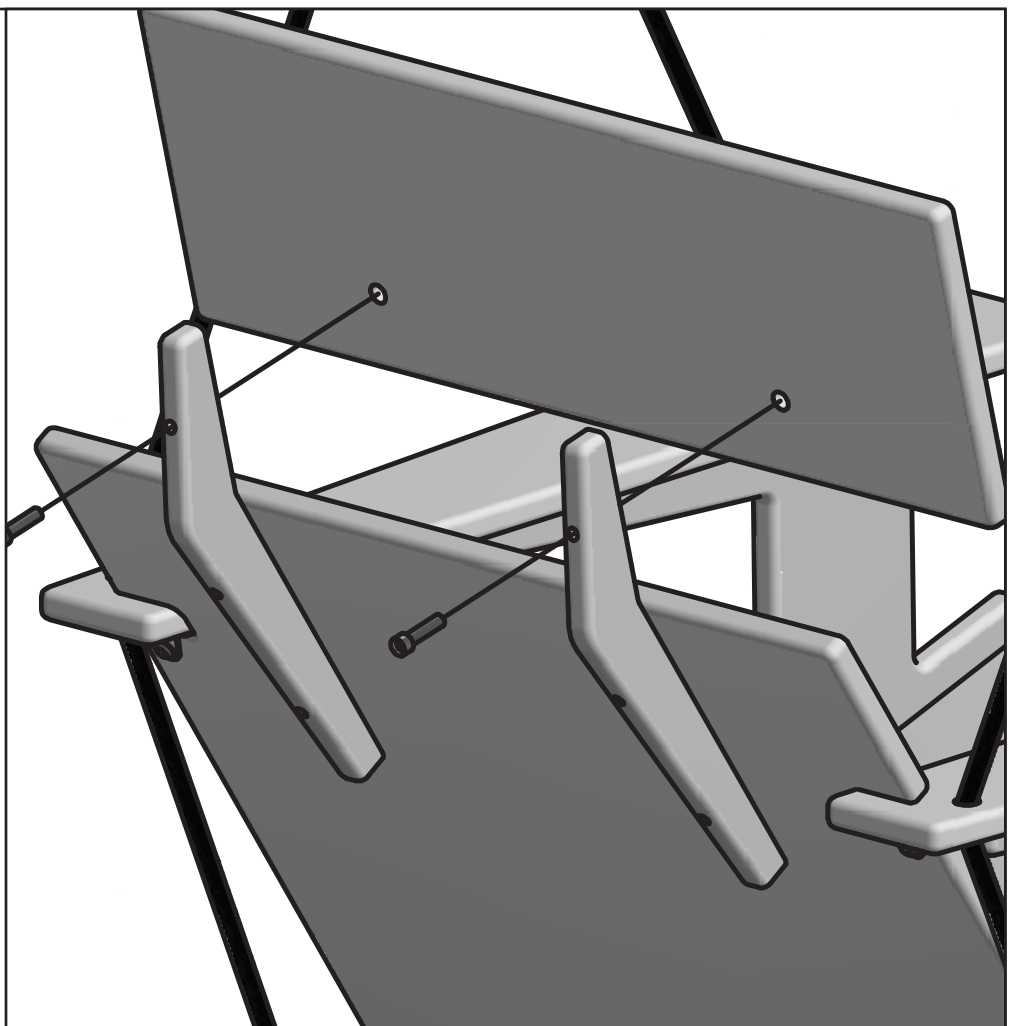


1"

2x



***Caution:**
Tighten bolts until parts are drawn tight together and stop.
Do not overtighten bolts.
**** Please use included 3/16" Allen Wrench for step 9.**



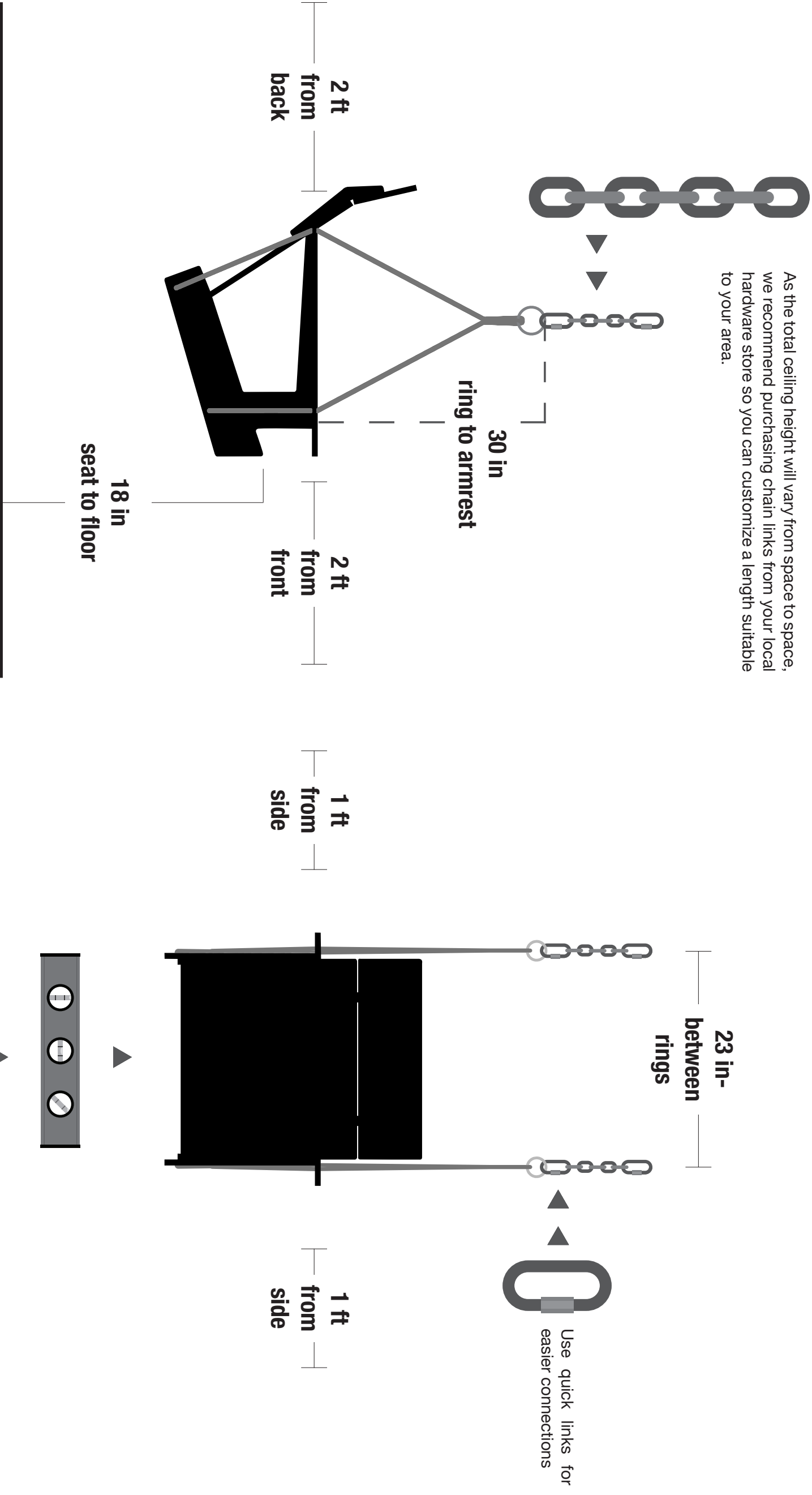


LOLLYGAGGER SINGLE SWING

SWING HANGING SUGGESTIONS

lollidesigns.com | 1-877-740-3387

It is the responsibility of the end user to mount their swing securely.



In general, we recommend approximately a 2-ft minimum clearance in the back and front, and a foot on either side. As far as the seat height, we recommend it to be approximately 18" from the ground, but that can be a general approximation, due to each specific user.

Check that the swing hangs level. Use a level on the swing seat for best measurement.