

PH Replacement-kit

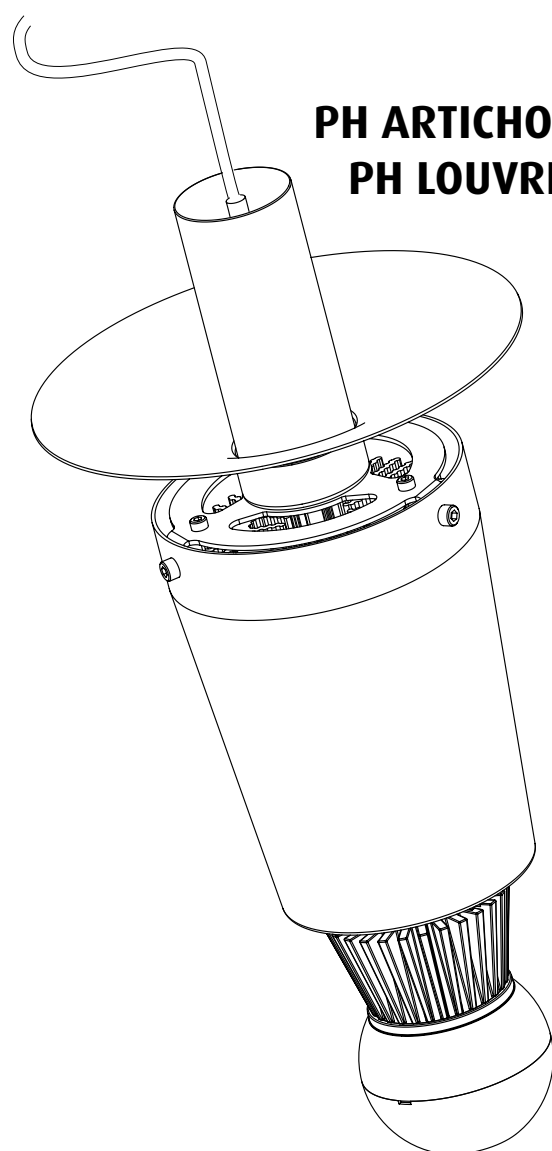
Sparepart

**louis
poulsen**

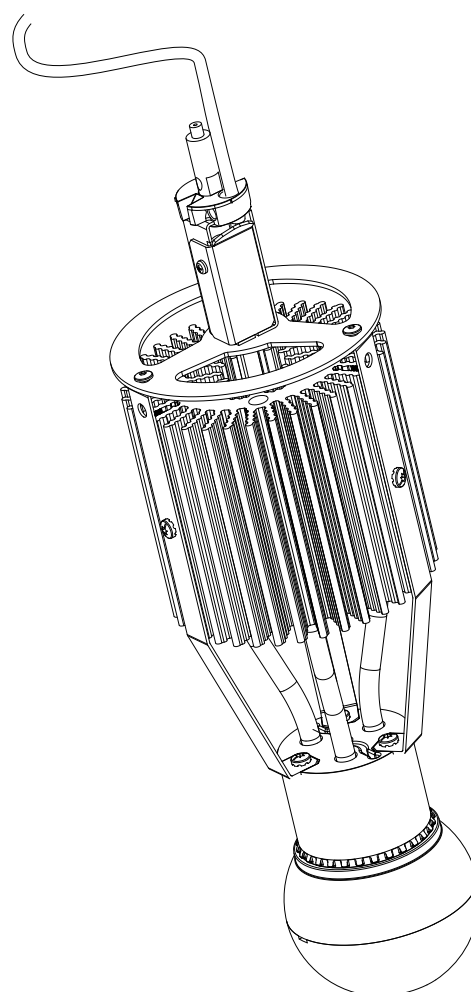
Design Poul Henningsen



17720-14

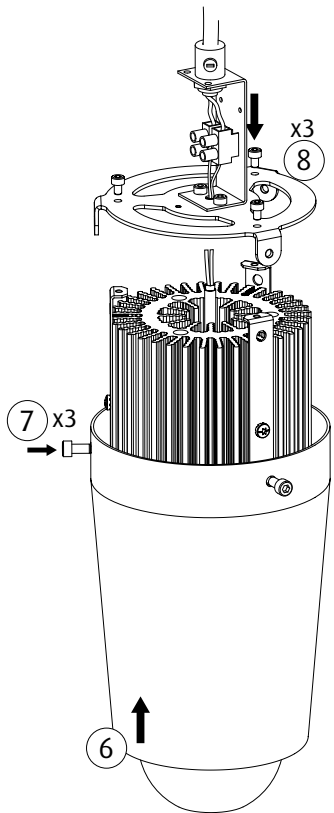
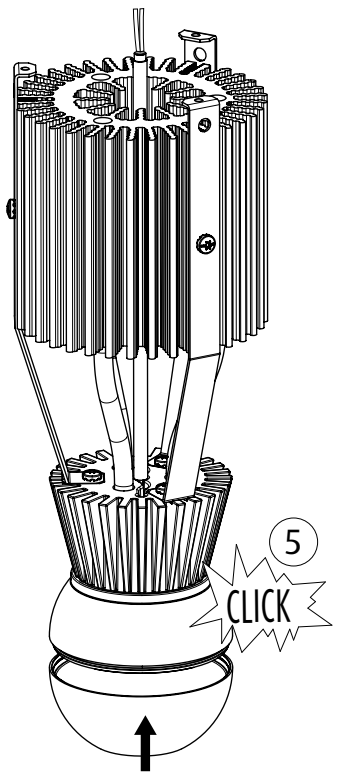
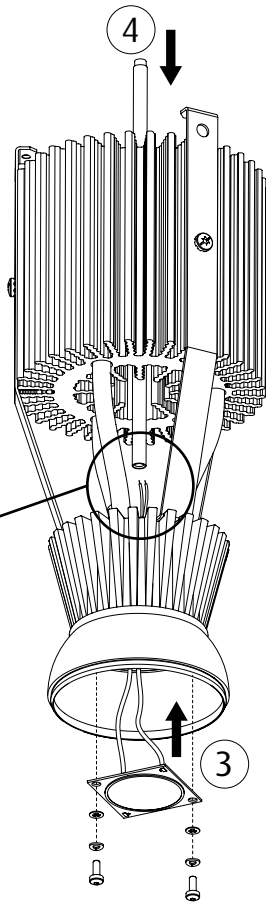
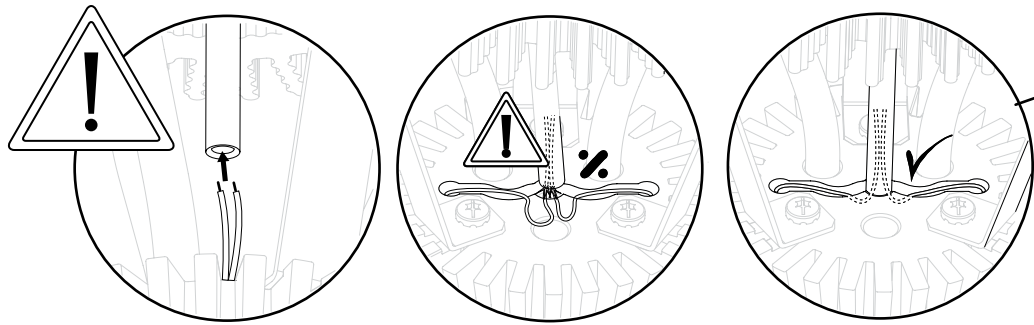
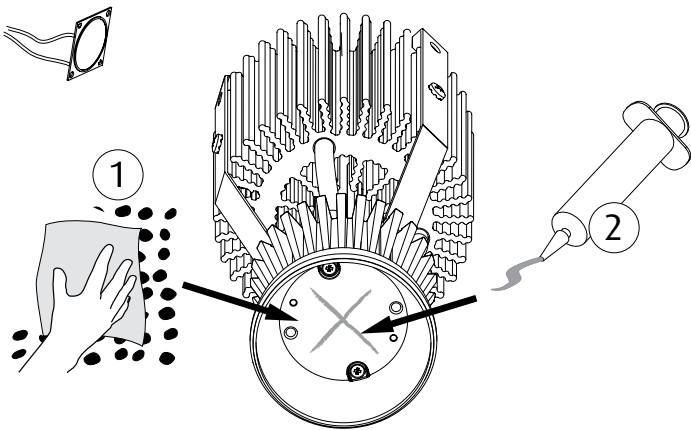
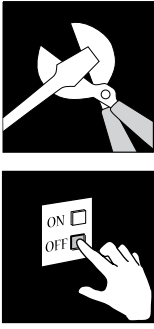
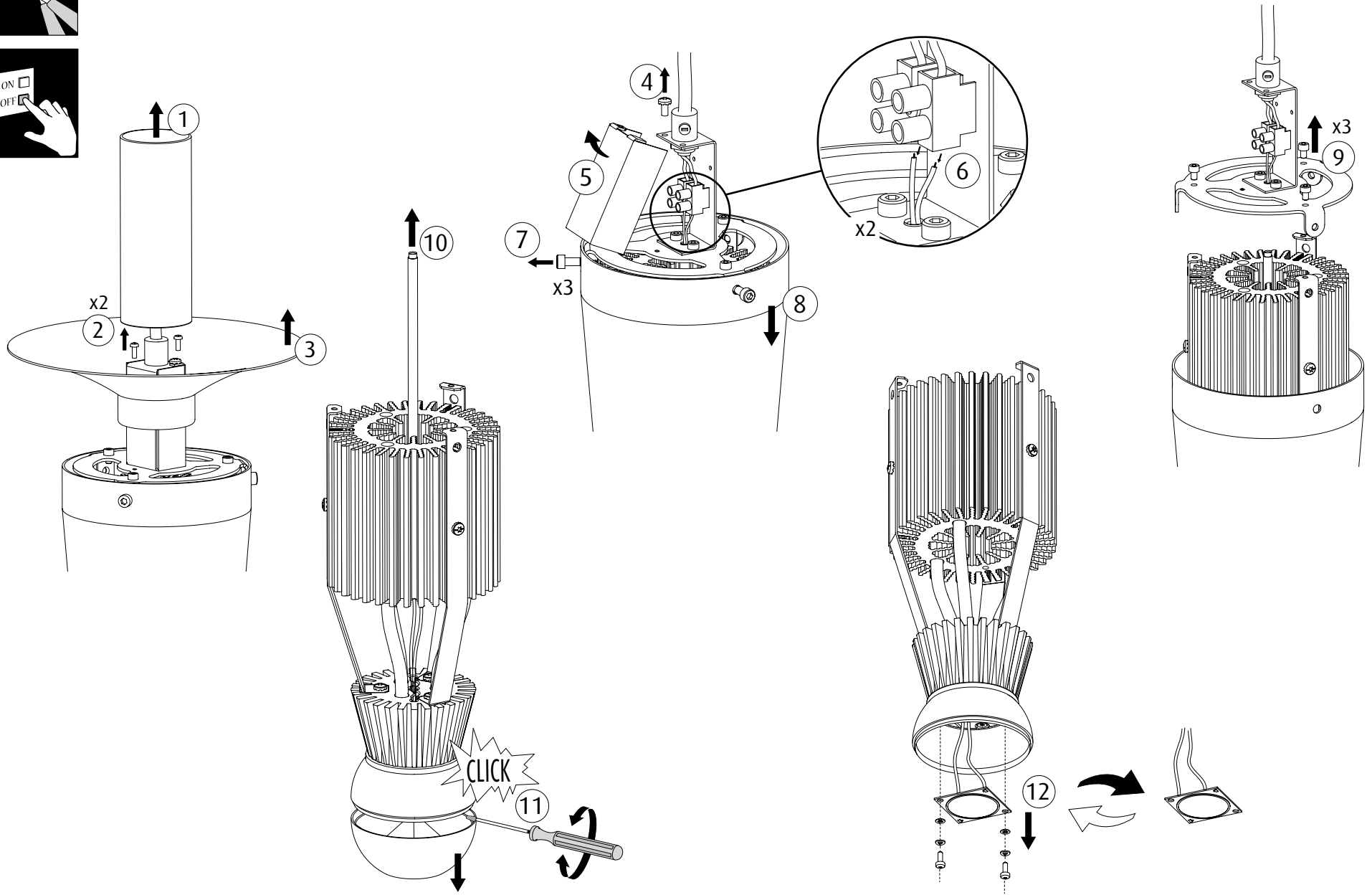
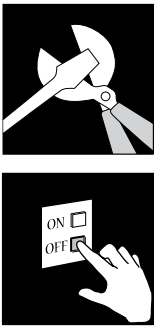


**PH ARTICHOKE
PH LOUVRE**



PH 6½-6

- DA**
⚠ Lyskilden i dette armatur må kun udskiftes af producenten eller en uddannet elektriker.
- EN**
⚠ The light source contained in this luminaire shall only be replaced by the manufacturer or a qualified electrician.
- DE**
⚠ Das in dieser Leuchte enthaltene Leuchtmittel sollte nur vom Hersteller oder von einem qualifizierten Elektriker ausgetauscht werden.
- SV**
⚠ Ljuskällan i denna armatur ska endast bytas ut av tillverkaren eller en kvalificerad elektriker.
- IT**
⚠ La sorgente contenuta in questa parte illuminante sarà solo riposizionata dal produttore o da un elettricista esperto.
- FR**
⚠ La source lumineuse de ce luminaire ne peut être remplacée que par le fabricant ou un électricien qualifié.
- ES**
⚠ La sustitución de la fuente de luz que contiene esta luminaria debe ser llevada a cabo exclusivamente por el fabricante o un electricista profesional.
- FI**
⚠ Tämän valaisimen valonlähteen saa vaihtaa ainoastaan valmistaja tai koulutettu sähköasentaja.



EU version:

DA	Rød	DA	Sort
SV	Röd	SV	Svart
EN	Red	EN	Black
DE	Rot	DE	Schwarz
IT	Rosso	IT	Nero
FR	Rouge	FR	Noir
ES	Rojo	ES	Noir
FI	Punainen	FI	Musta

DA	Brun	DA	Blå
SV	Brun	SV	Blå
EN	Brown	EN	Blue
DE	Braun	DE	Blau
IT	Marrone	IT	Blu
FR	Brun	FR	Bleu
ES	Marrón	ES	Azul
FI	Ruskea	FI	Sininen

US version:

US	Red	US	Black
US	Black	US	White

