

## PH 2/1 PENDANT

Designed by Poul Henningsen

---



---

### Description

The fixture design is based on the principle of a reflective three-shade system, which directs the majority of the light downwards. The shades are made of hand-blown, opal, three-layer glass, which is glossy on top and sandblasted matte on the underside, giving a soft and uniform light distribution.

---

### Variants

VARIANT NUMBER	COLOR, RAL	W / H / L (IN) / W (LB)
5741925300	BLACK METALIZED, 906	7.9 / 5.5 / 7.9 IN / 2.1 LB
5741925575	BRASS METALLISED	7.9 / 5.5 / 7.9 IN / 2.1 LB
5741925588	HIGH LUSTRE CHROME PLATED, 900	7.9 / 5.5 / 7.9 IN / 2.1 LB

---

### Materials & Finishes

#### MATERIALS

Shades: Handblown white opal glass (sandblasted on the undersides for uniform light distribution). Suspension: Black metalized or high lustre chrome plated, spun aluminum.

#### FINISHES

Black metalized or high lustre chrome plated. White opal glass.

---

## Mounting

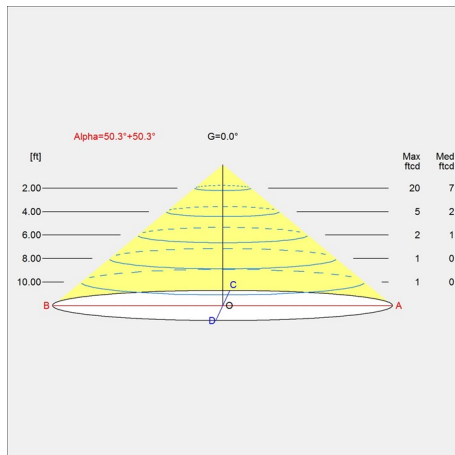
Canopy: White. Cord type: 3-conductor, 18 AWG black PVC power cord. Cord length: 12'. For mounting instructions, see download section on the product detail page.

## Information

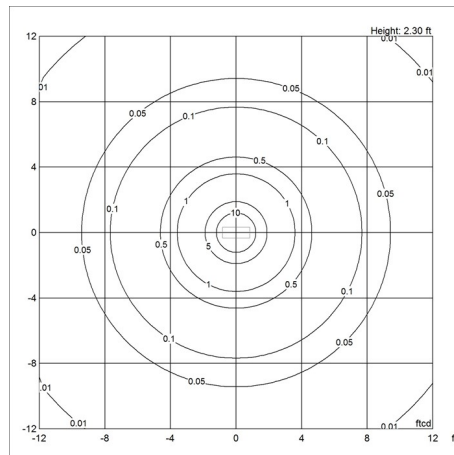
Electrical:  
 System Wattage: 10W  
 LED Wattage: 9 W  
 Delivered lumens: 286  
 Efficacy: 28.6 lm/W  
 Certifications:  
 cULus, Dry Location  
 Protection class IP20  
 Controllability: Phase dimming  
 Actual performance dependent upon screw-base lamp used. For the E-socket product variants, bulbs are not included. LED light source is part of the product.

## Light distribution diagrams

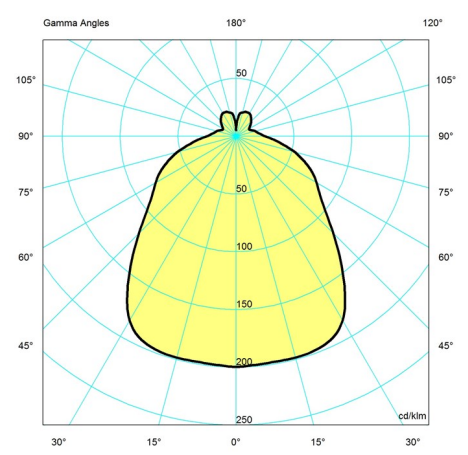
### CARTESIAN



### ISOLUX



### POLAR



## Variant Options

For particular variant options, please check our online Product Variants Configurator on the product detail page.

VARIANT NO.	LIGHT SOURCE	VOLTAGE/FRQ	LUMEN	FEATURES	CABLE
5741925300	G16.5/IF candelabra	120V	286	-	Black textile
5741925575	G16.5/IF candelabra	120V	286	-	White textile
5741925588	G16.5/IF candelabra	120V	286	-	Black textile