

MADE BY HAND



PEPO PENDANT INSTRUCTION MANUAL

Dear costumer

Congratulations on your PePo lamp.

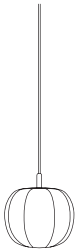
The PePo lamp has a traditional function, but the form embraces soft waves and movements that are not usually referenced in glass lamps.

In this leaflet you will find useful and important instructions on how to assembly and mount your PePo lamp. Not two spaces are alike, so the specific space should guide you on the best use of your PePo lamp.

Should you have any questions or concerns, please contact your local store, or email Made by Hand on info@madebyhand.dk

Best wishes,

Made by Hand



PEPO20
PENDANT



PEPO30
PENDANT

SPECIFICATIONS

CE-Certified

IP20 (Indoor)

G9 Socket, max 20W or E27 Socket, max 40W

Voltage 230V~ 50/60Hz

IEC 60598-1:2020, IEC 60598-2-1:2020

CONTENTS

1 x Pepo shade

1 x Socket with 3m cloth cord and glass detail

1 x Canopy with mounting plate

Bulb not included

CAUTION!

Before assembling your lighting fixture, refer to the section entitled ELECTRICAL CONNECTIONS. If you feel you do not have electrical wiring experience, consult a qualified licensed electrician before installing. The external flexible cable or cord of this luminaire cannot be replaced. If the cord is damaged, the luminaire should be destroyed.

GENERAL

1. To ensure the success of the installation, review the diagrams and instructions thoroughly before beginning.
2. All electrical connections must be in accordance with local codes, ordinances, and the National Electrical Code.
3. Before starting the installation, disconnect the power supply by turning off the circuit breaker or by removing the fuse at the power off. Using the light switch is not sufficient to prevent electrical shock.

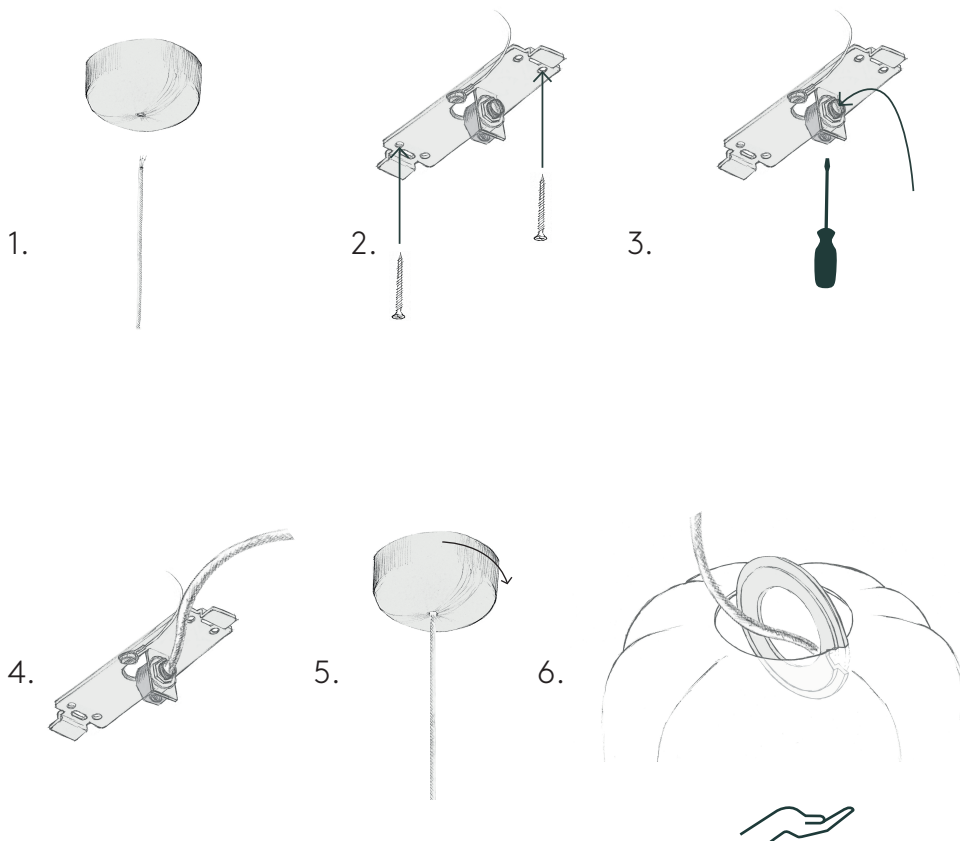
NOTE

The safeguards and instructions appearing in this manual are not meant to cover all possible conditions and situations that may occur. It must be understood that common sense, caution, and reasonable care are factors which cannot be built into any product, these factors must be supplied by the person(s) caring for and operating the fixture.

ASSEMBLY

1. Slide the canopy onto the cord.
2. Mount the ceiling bracket on top of your electrical output with supplied screws.
3. Cut the cord to desired length, insert in the strain relief and tighten screw to secure the cord.
4. Connect the wires and grounding to the electrical outlet with supplied connectors.
5. Slide the canopy in place and turn until it fastens.
6. Insert the socket and mounting-ring as shown. The shade should rest on the outer edge of the ring. Make sure to support the glass shade while inserting the socket.
7. If the shade seems to incline to one side, nudge the shade into place.

Your fixture is now ready for use.





VISIT US

Made by Hand ApS
Tømmergravsgade 4B
2450 Copenhagen SV
Denmark

MORE AT

madebyhand.dk