

FOCUS ON



Flow collection

Designed by Jean Marie Massaud

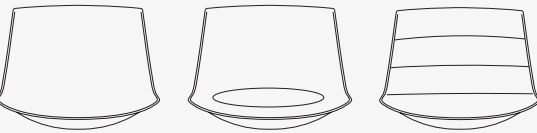
Shell



Shell colors

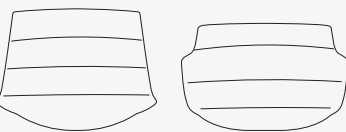
Chair

L53 D54.5 H80.5 cm



Textile and Leather

L54 D55.5 H80.5 / L56 D54 H76.4 cm



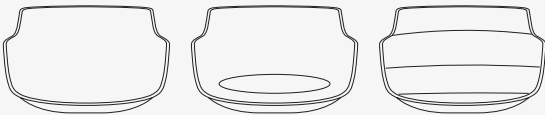
Stool

L52 D48 H44 / H65 / H78 cm



Slim

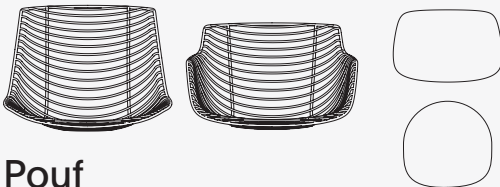
L55 D53 H76.4 cm



Filo

L53.2 D55.6 H80.5 / L56.8 D55.6 H76.5 cm

Pad



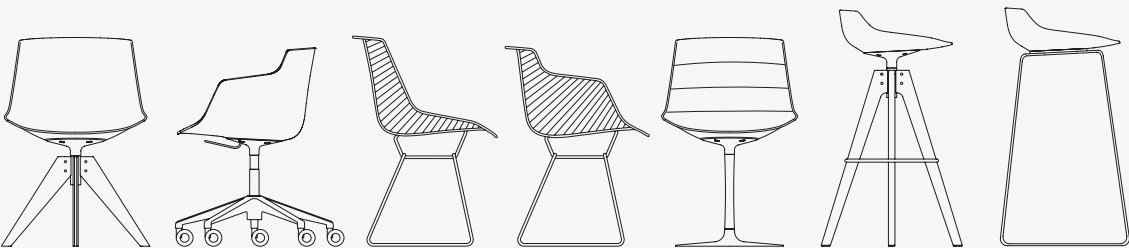
Pouf

L56 D56 / L54 D54 / H48 cm



EN Developed in 2009 from an idea by Jean Marie Massaud, Flow Chair is a versatile, flexible chair that has evolved over time into a family of products capable of meeting every need and style. The curves and elegance of the profile create a perfect blend of comfort and ergonomics. With different bases and a wide range of finishes, Flow integrates into the most varied contexts without ever betraying its original character. In 2014, the Flow line was enriched with the Slim variation, a small armchair with sinuous lines and a contemporary character. Like the original chair, it fits in harmoniously with any environment.

IT Nata nel 2009 da un'idea di Jean Marie Massaud, Flow Chair è una seduta versatile e flessibile, che nel tempo si è evoluta in una famiglia di prodotti in grado di soddisfare ogni esigenza e stile. Le linee curve e l'eleganza del profilo si combinano in un'alchimia perfetta di comfort ed ergonomia. Grazie a diversi basamenti e un'ampia gamma di finiture, Flow si integra nei contesti più diversi, senza mai tradire il suo carattere originale. Nel 2014, la linea Flow si è arricchita della variante Slim, una poltroncina dalle linee sinuose e dal carattere contemporaneo, che come la seduta originale si integra armoniosamente in qualsiasi ambiente.



8 bases, 10 shells, 4 colours, 250 fabrics,
more than 100.000 configurations.
Create yours!

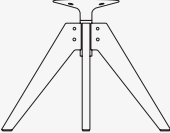
Discover
Flow
collection



Base

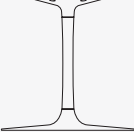
VN4LS

VN 4 legged steel



CL

Central leg



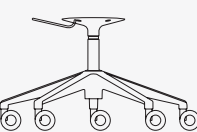
VN4LO

VN 4 legged oak



5PSC

5 point star on castors



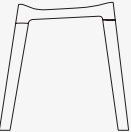
4LO

4 Legged oak



4LC

4 Legged cross



4LI

4 Legged Iroko



4LOC

4 Legged oak cross





Una collezione ampia e versatile per rispondere alle diverse esigenze di mercato.

A complete and versatile collection to meet different market needs.

Le linee curve della seduta e l'eleganza del profilo si combinano in un'alchimia perfetta garantendo comfort ed ergonomia.

A curved seat and elegant profile blend in perfect harmony to ensure comfort and ergonomics alike.

