

Audo



—
UPHOLSTERY PROGRAMME 2023, *USA*

AUDO UPHOLSTERY PROGRAMME
Textile

The Audio Upholstery Program is an overview of the textile and leathers available for Audio upholstered furniture. All textile and leather options are available in all colors. You'll find over 100 fabric and leather options, with the most popular configurations available with expedited delivery in our Quick Ship program. Custom upholstery orders from our Audio Upholstery Program (SPEC) are ready to ship with standard delivery lead times. Our Fixed Combinations listed in this Brand Book are suggested upholsteries selected by our design team, and deliver with standard lead times.

We are happy to upholster furniture using customer's own materials (COM) with extended delivery lead times, upon fabric approval. COM products are to be calculated by PC1T if in textile and PC1L if in leather, excluding the price of the fabric.

Please note that the color references in this upholstery programme are only intended as a guide. For further information please see manufacturer websites, or contact your local Audio Sales Representative for samples or further information.

KVADRAT.DK
SAHCO.COM
NEVOTEX.COM
JAB.DE
DANISHARTWEAVING.COM
HBFTEXTILES.COM



Use table to determine the upholstery options available for fabric-covered items.

	AFTERROOM	BRASILIA	CAIRN	OO CHAIR	CONSTANCE CHAIR	CONSTANCE SOFA	EAVE COLLECTION	HARBOUR CHAIR	HARBOUR LOUNGE CHAIR	INGEBORG	KNITTING CHAIR	MERKUR	MINGLE	MY OWN CHAIR	OFFSET	READY	TEAROOM CHAIR	TEAROOM SOFA	THE TIRED MAN	VILHELM	THE PENGUIN	ELIZABETH	ODA	PAGODE	RADIOHUS	THE SEAL	
PRICE CATEGORY 0	●	●	●	●	●	○	●	●	●	●	●	●	○	○	●	●	●	●	●	○	○	○		○	○	○	
AUDO BOUCLÉ, AUDIO	●	●	●	●	○	○	●	●	○	○	○	●	○	○	●	●	●	●	●	○	○	○		○	○	○	
PRICE CATEGORY 1																											
BARNUM BOUCLÉ, AUDIO	●	●	●	●	○	○	●	●	○	○	○	●	○	○	●	●	●	●	●	○	○	○		○	○	○	
CHAMPION, JAB	●	●	●	●	○	○	●	●		○	●	○	○	○	●	○	●	●	○	○	○	○		○	○	○	
ILLUSION, NEVOTEX	●	○	●	●	○	○	●	●		○	●	○	○	○	●	○	○	○	○	○	○	○			○	○	
MELANGE NAP, KVADRAT	●	○	○	●	○	○	●	●	○	○	○	○	○	○	○	○	●	○	○	○	○	○		○	○	○	
REMIX, KVADRAT	●	●	●	●	○	○	●	●	●	○	●	○	○	●	●	●	●	●	○	○	●	●		●	●	●	
RE-WOOL, KVADRAT	●	○	●	●	○	○	●	●	●	○	○	○	○	○	●	●	●	○	○	○	○	●	●		●	●	●
PRICE CATEGORY 2																											
CANVAS 2, KVADRAT	●	●	●	●	○	○	●	●	●	○	●	○	○	○	●	●	●	●	○	○	○	○		○	○	○	
COLLINE, KVADRAT	●	●	○	●	○	○	●	●	●	●	●	○	●	●	●	●	●	●	○	●	○	○		○	○	○	
FIORD, KVADRAT	●	●	●	●	○	○	●	●	●	●	●	○	○	●	●	●	●	●	○	●	●	●		●	●	●	
HALLINGDAL 65, KVADRAT	●	●	●	●	●	●	●	●	●	●	●	●	●	●	●	●	●	●	●	●	●	●	●	●	●	●	
REFLECT, KVADRAT	●	○	○	●	○	○	●	●		○	○	○	○	○	○	○	○	○	○	○	○	○		○	○	○	
SAVANNA, KVADRAT	●	●	●	●	○	○	●	●	●	○	●	○	○	○	●	●	●	●	○	○	○	○	○	○	○	○	
STEELCUT, KVADRAT	●	○	●	●	○	○	●	●	●	○	○	○	○	○	●	○	●	○	○	○	○	●	●		○	○	●
STEELCUT TRIO 3, KVADRAT	●	○	●	●	○	○	●	●	●	○	●	○	●	●	●	○	●	●	○	●	●	●		○	○	●	
PRICE CATEGORY 3																											
SAFIRE, SAHCO, KVADRAT	●	○	●	●	○	○	●	●	●	○	●	○	○	●	●	○	●	●	○	○	●	○	○	●	●	○	
VIDAR 4, KVADRAT	●	○	●	●	○	○	●	●	●	○	○	○	○	●	●	○	●	●	○	○	●	○	○	○	○	○	
ZERO, SAHCO, KVADRAT	○	●	●	●	●	●	●	●	○	●	○	○	●	●	●	●	○	●	●	●	○	○	○	○	○	○	
PRICE CATEGORY 4																											
GRAND MOHAIR, DANISH ART WEAVING	○	○	●	●	●	●	●	○	●	●	○	○	●	○		○	○	●	●	●	○	○		○	○	○	

- TESTED AND APPROVED.
- NOT TESTED YET, BUT POSSIBLE TO TEST

Textile Category 0

AUDO BOUCLÉ
by Audo



PRICE CATEGORY
0
MATERIALS
78% Acrylic, 20% Polyester 2% Viscose
MARTINDALE
60.000
LIGHTFASTNESS
5-7
PILLING
4

			
02	06	08	07
			
15	16	20	

Textile Category 1

BARNUM BOUCLE
by Audo



PRICE CATEGORY
1

MANUFACTURER
Audo

MATERIALS
45% Cotton
19% Viscose
15% Wool
13% PC
8% Polyester

MARTINDALE
60,000

LIGHTFASTNESS
5

PILLING
4



04



05



10



11



19



21



24



PRICE CATEGORY
1
MANUFACTURER
JAB
MATERIALS
100% Polyester
MARTINDALE
70.000
LIGHTFASTNESS
5

1-3114-010	1-3114-011	1-3114-012	1-3114-020
1-3114-021	1-3114-022	1-3114-030	1-3114-031
1-3114-032	1-3114-033	1-3114-034	1-3114-035
1-3114-040	1-3114-041	1-3114-050	1-3114-051
1-3114-052	1-3114-053	1-3114-054	1-3114-055



1-3114-060



1-3114-061



1-3114-062



1-3114-063



1-3114-064



1-3114-070



1-3114-071



1-3114-072



1-3114-073



1-3114-074



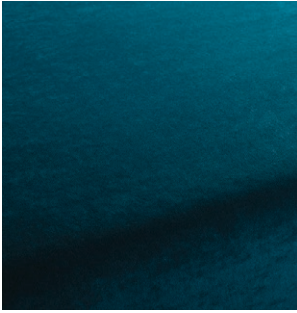
1-3114-075



1-3114-080



1-3114-081



1-3114-082



1-3114-091



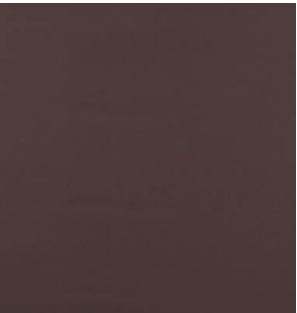
1-3114-092





PRICE CATEGORY
1
MANUFACTURER
Nevotex
MATERIALS
Artificial leather
THICKNESS
1 mm

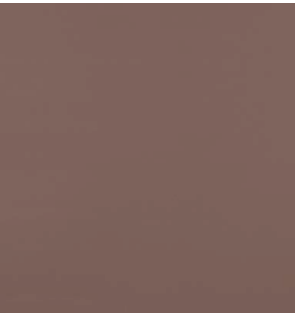
82417	93086	53593	22427
65072	72133	63174	61602
65307	74007	76236	00800
84176	85352	87241	36519
44184	24784	45633	57841



48013



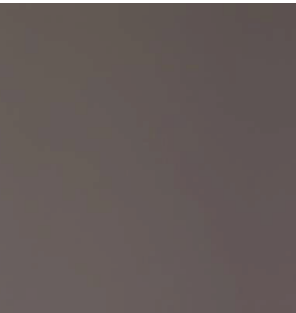
46508



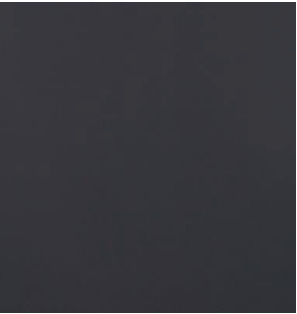
47124



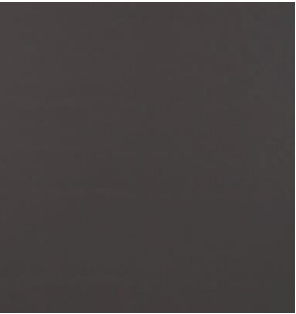
67403



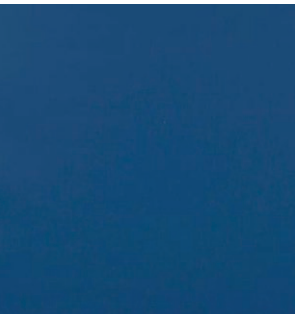
47069



68523



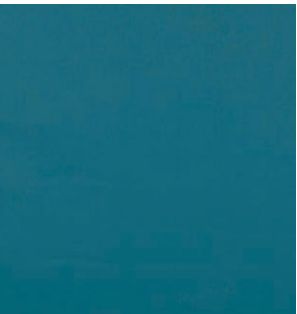
58290



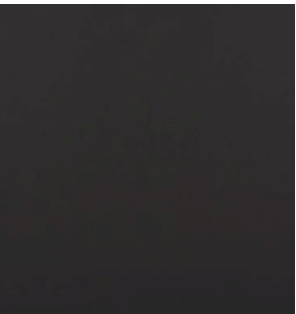
68746



65066



67382



00110



83430



85020



44388



36850



23660



28040



75566



76725

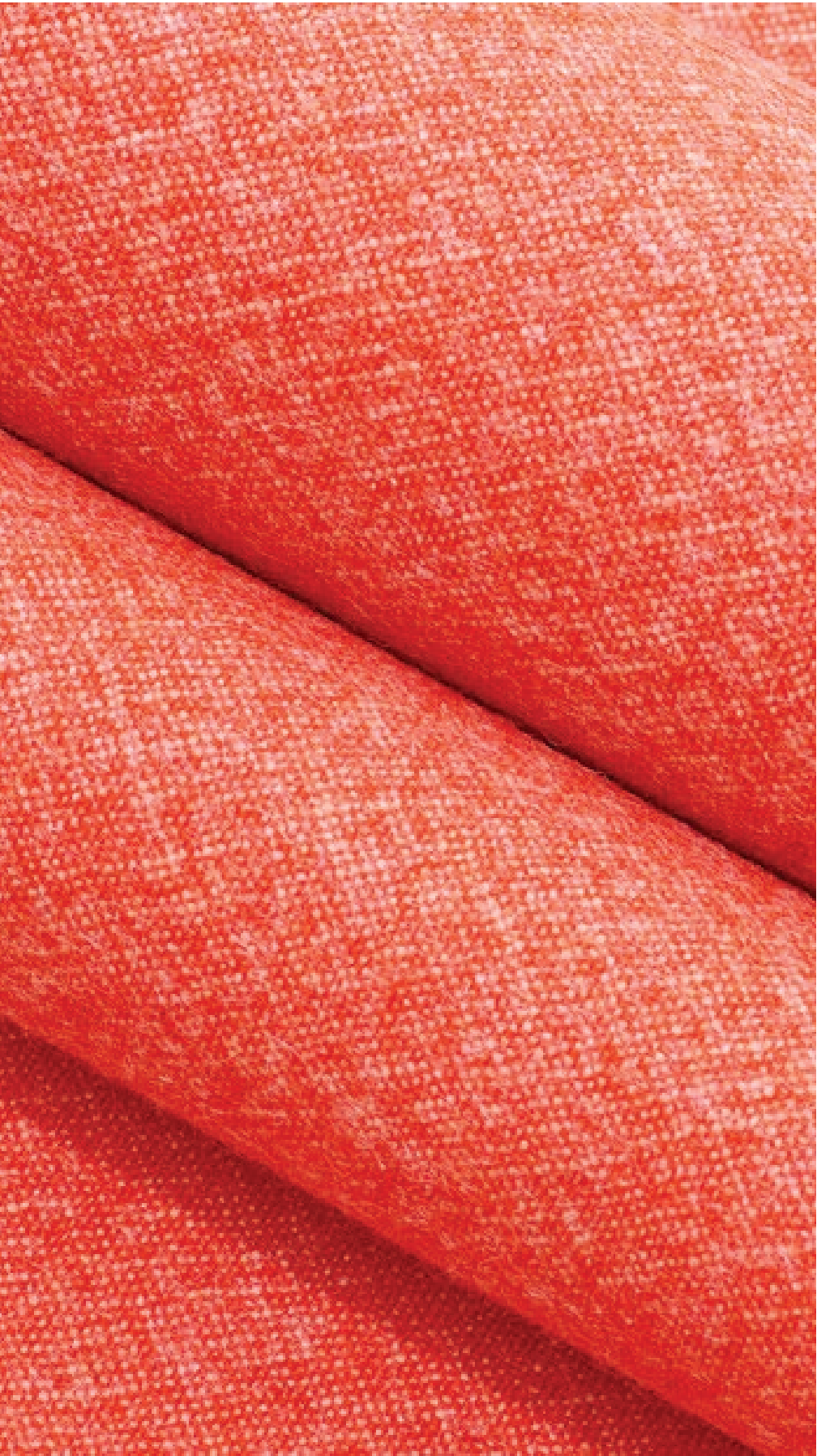


77773



66745

MELANGE NAP
by Kvadrat



PRICE CATEGORY
1
MANUFACTURER
Kvadrat
MATERIALS
97% New Wool Worsted 3% Nylon
MARTINDALE
60.000
LIGHTFASTNESS
4-5
PILLING
3-4

0111	0171	0191	0211
0241	0271	0321	0351
0371	0371	0411	0461
0491	0521	0551	0651
0691	0711	0751	0771



0791



0871



0911



0951



0911

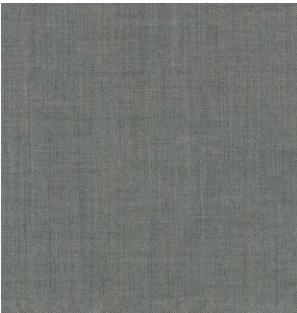
REMIX 3
by Kvadrat



PRICE CATEGORY
1
MANUFACTURER
Kvadrat
MATERIALS
90% New wool
10% Nylon
MARTINDALE
100.000
LIGHTFASTNESS
5-7
PILLING
4

			
0113	0123	0126	0133
			
0136	0143	0152	0173
			
0183	0196	0223	0233
			
0242	0252	276	0266
			
0276	0296	0326	0346





0906



0912



0923



0933



0942



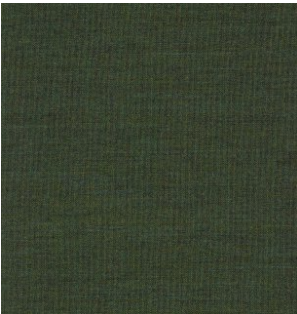
0954



0962



0973



0982



0996

RE-WOOL
by Kvadrat



PRICE CATEGORY
1

MANUFACTURER
Kvadrat

MATERIALS
45% new wool worsted
45% recycled wool
10% nylon

MARTINDALE
100.000

LIGHTFASTNESS
5-7 (ISO 1-8)

PILLING
4 (ISO 1-5)



0108



0128



0158



0198



0218



0358



0378



0408



0448



0458



0558



0568



0628



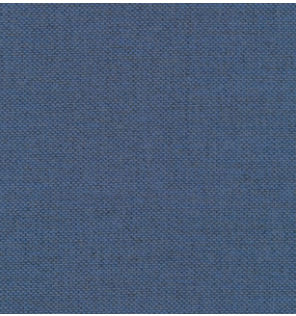
0648



0658



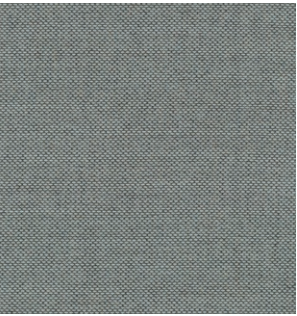
0718



0758



0768



0828



0858



0868

Textile Category 2

CANVAS 2
by Kvadrat



PRICE CATEGORY
2
MANUFACTURER
Kvadrat
MATERIALS
90% New wool
10% Nylon
MARTINDALE
100.000
LIGHTFASTNESS
5-7
PILLING
4-5

			
114	124	134	154
			
174	216	224	244
			
254	264	356	364
			
374	414	424	446
			
454	546	556	566



576



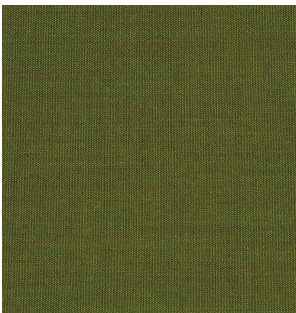
614



644



654



954



964



974



984



666



674



684



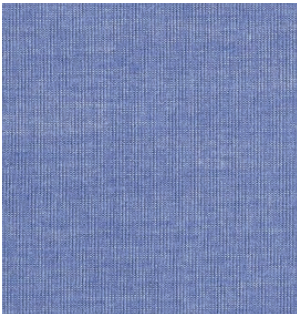
694



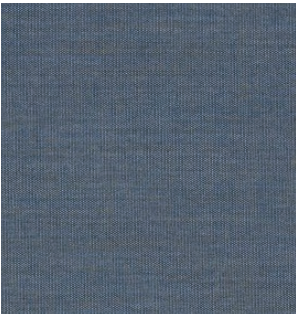
996



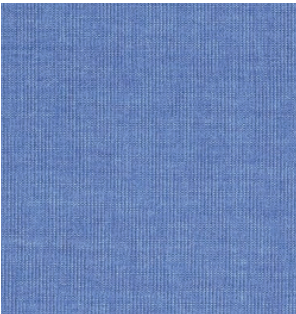
716



726



734



746



764



786



794



836



854



926



936



946



PRICE CATEGORY
2

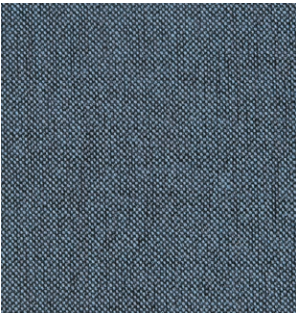
MANUFACTURER
Sahco

MATERIALS
76% Linen
21% Cotton
3% Polyester

MARTINDALE
45.000

LIGHTFASTNESS
4-6

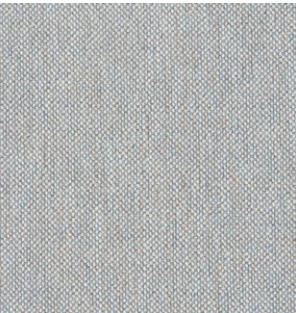
PILLING
4



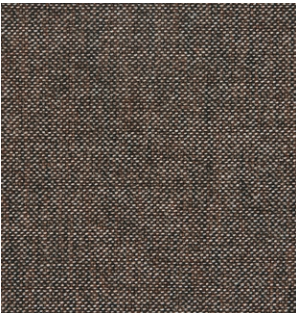
0001



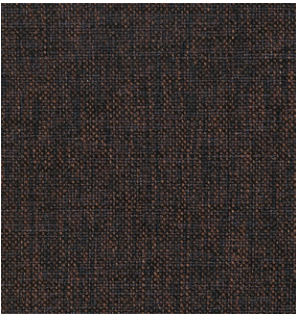
0002



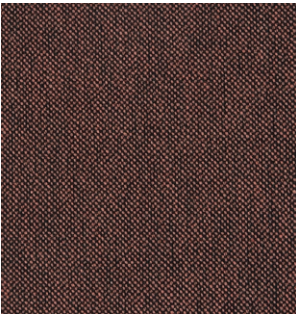
0003



0004



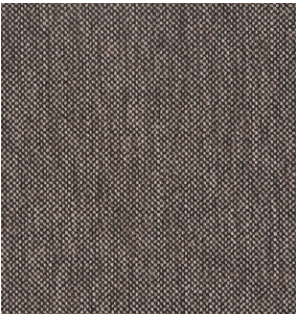
0005



0006



0007



0008



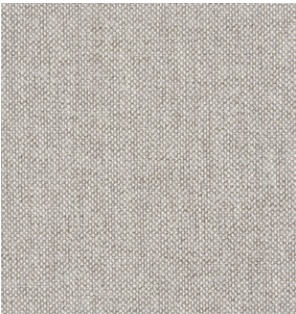
0009



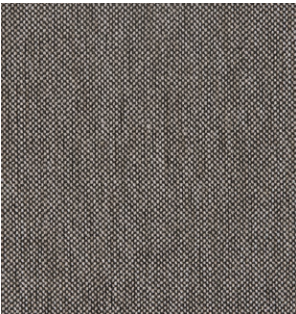
0010



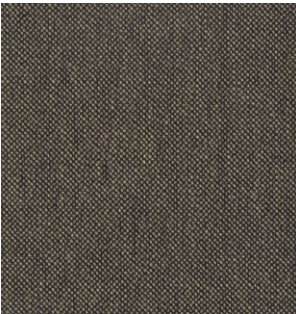
0011



0012



0013



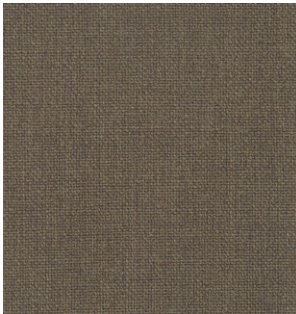
0014



0015



0016



0017

COLLINE 2
by Kvadrat



PRICE CATEGORY
2

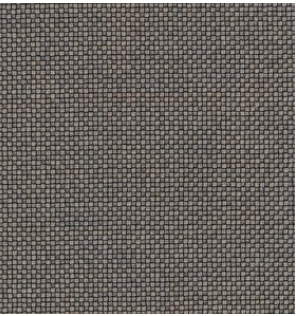
MANUFACTURER
Kvadrat

MATERIALS
75% Wool
17% Acrylic
8% Nylon

MARTINDALE
100.000

LIGHTFASTNESS
6

PILLING
4-5



0127



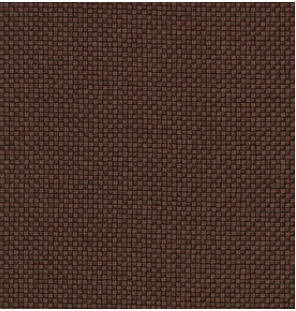
0147



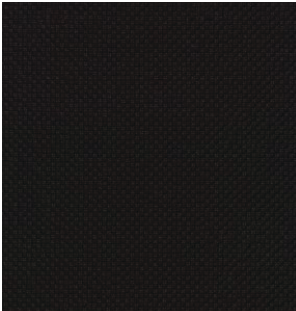
0177



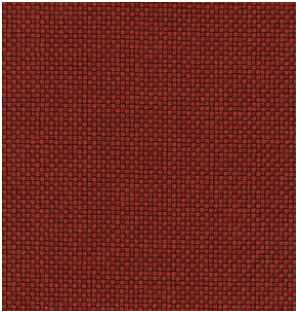
0227



0347



0397



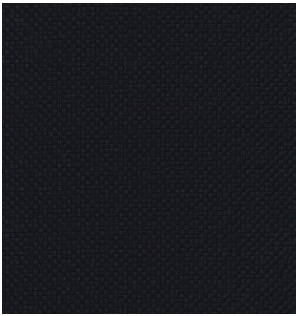
0657



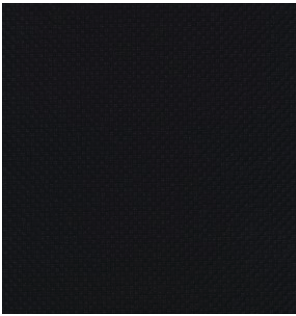
0677



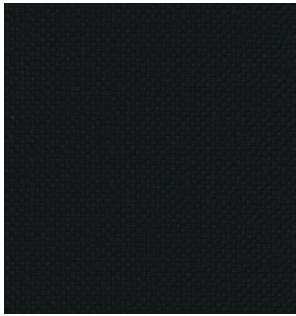
0737



0787



0797



0987

FIORD 2
by Kvadrat



PRICE CATEGORY
2

MANUFACTURER
Kvadrat

MATERIALS
92% New wool
8% Nylon

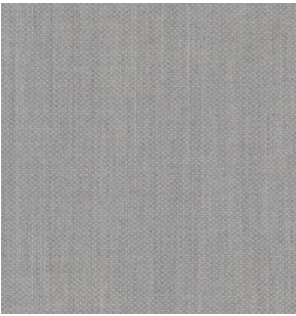
MARTINDALE
60.000

LIGHTFASTNESS
6

PILLING
4-5



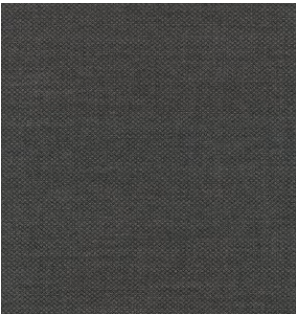
101



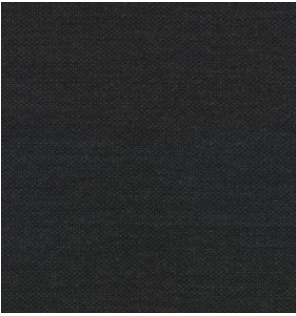
121



151



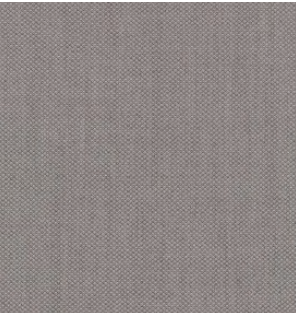
171



191



201



251



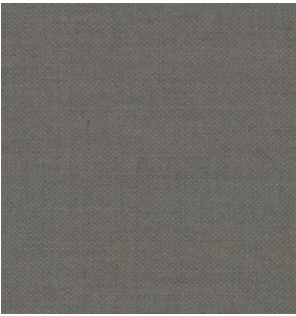
262



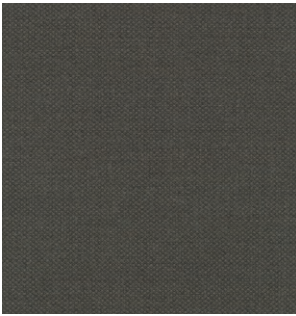
271



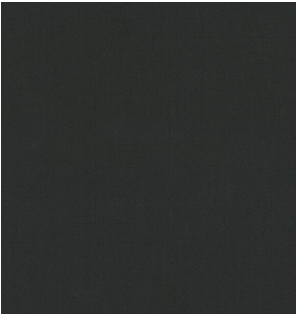
322



351



371



382



391



422



442



451



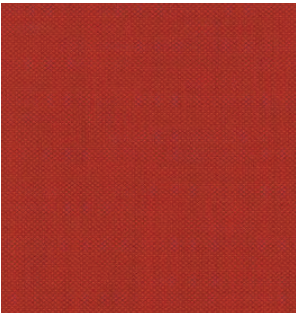
521



551



562



571



581



591



642



672



721



751



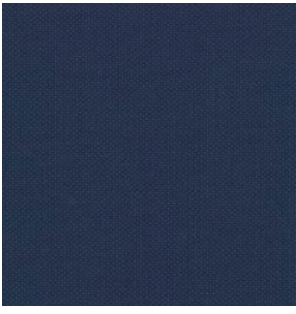
762



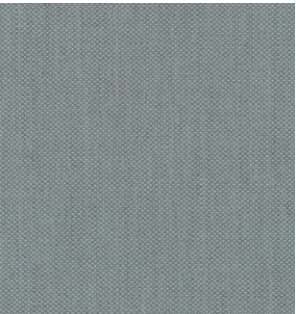
771



782



791



821



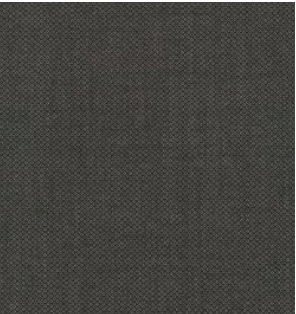
862



951



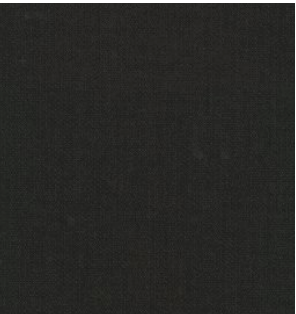
961



971



981



991

HALLINGDAL 65
by Kvadrat



PRICE CATEGORY
2

MANUFACTURER
Kvadrat

MATERIALS
70% New wool
30% Viscose

MARTINDALE
100.000

LIGHTFASTNESS
5-7

PILLING
3-4



0100



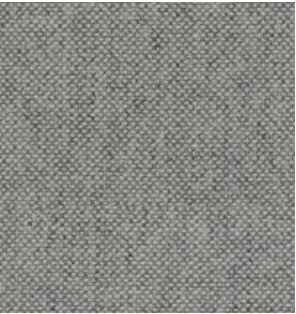
0103



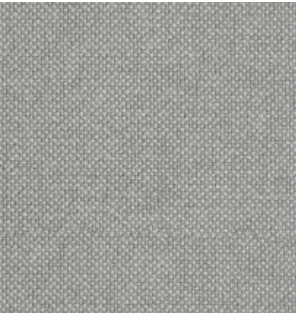
0110



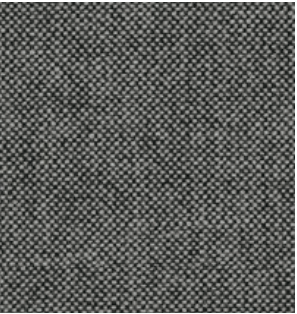
0113



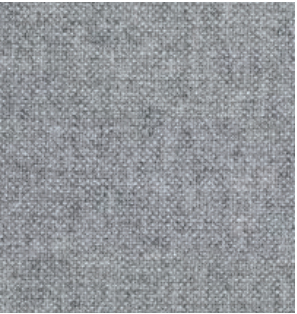
0116



0123



0126



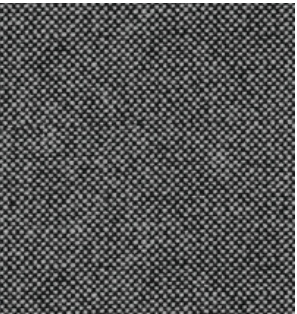
0130



0143



0153



0166



0173



0180



0190



0200



0220



0224



0227



0270



0350

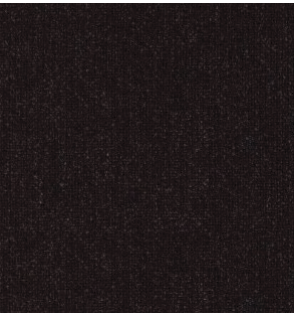
HALLINGDAL 65
by Kvadrat



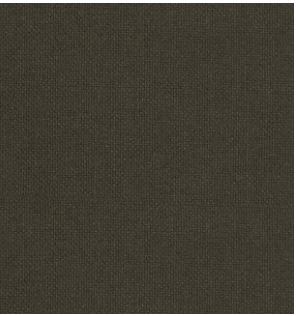
0368



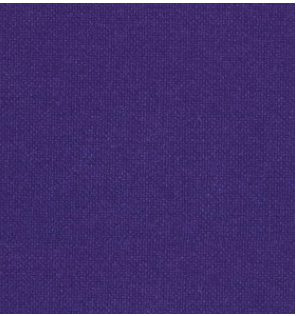
0370



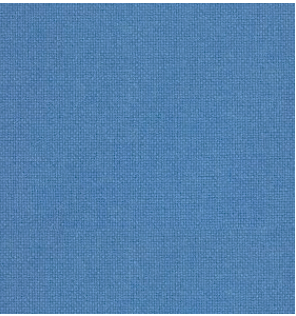
0376



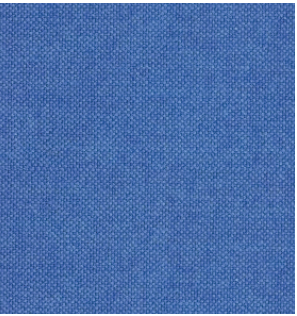
0390



0702



0723



0733



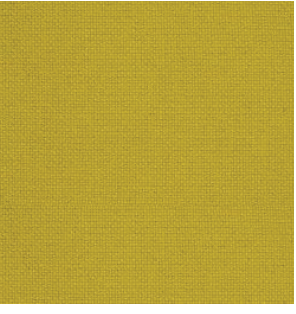
0750



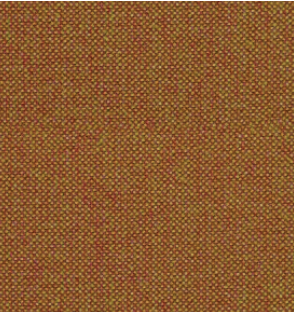
0407



0420



0457



0526



0753



0754



0763



0764



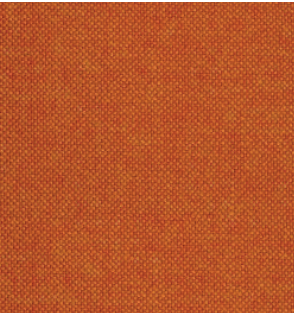
0547



0563



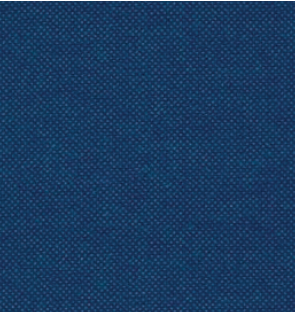
0573



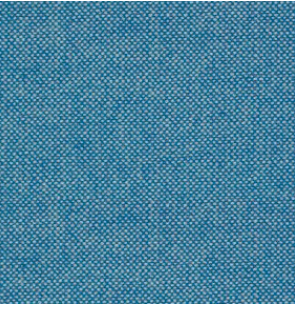
0590



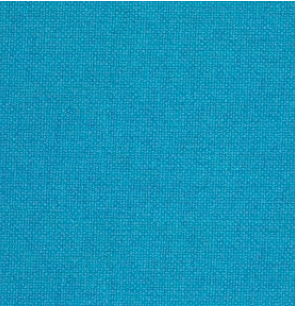
0773



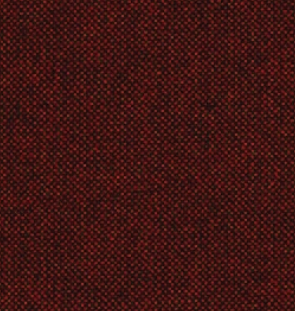
0810



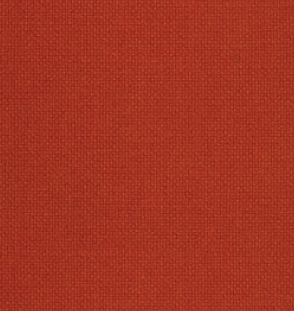
0840



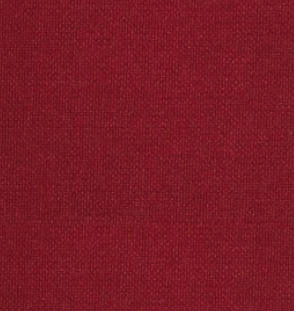
0850



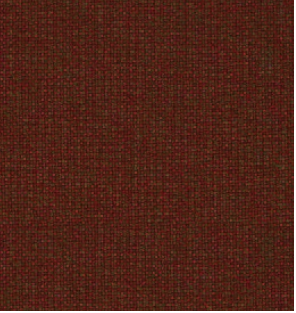
0596



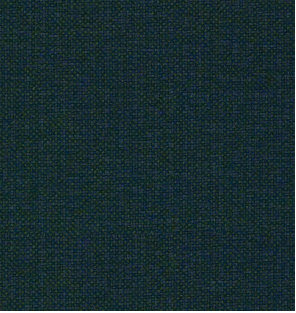
0600



0657



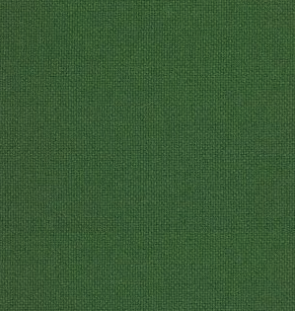
0660



0890



0907



0944



0960



0674



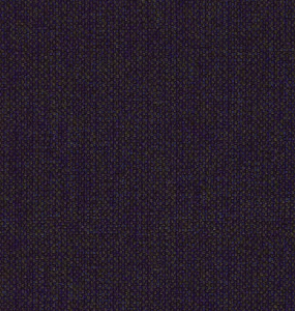
0680



0687



0694



0968



0980

REFLECT
by Kvadrat



PRICE CATEGORY
2

MANUFACTURER
Kvadrat

MATERIALS
100% post-consumer
recycled polyester

MARTINDALE
100.000

LIGHTFASTNESS
6 (ISO 1-8)

PILLING
4 (ISO 1-5)



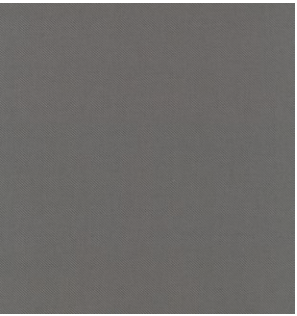
0104



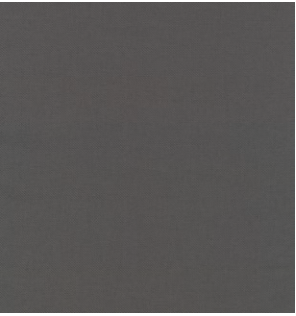
0114



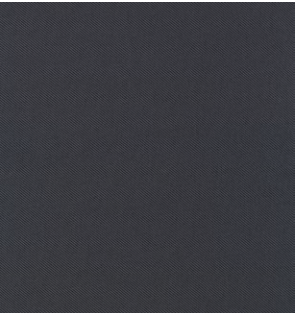
0124



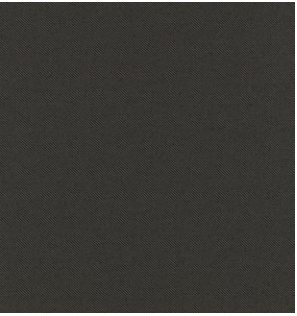
0154



0164



0174



0184



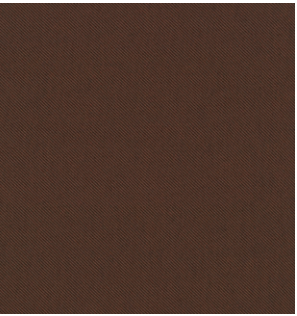
0194



0204



0224



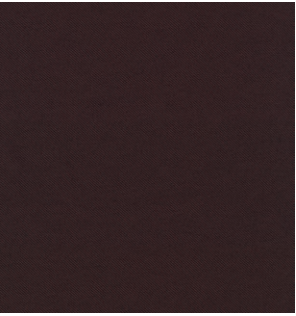
0274



0344



0374



0384



0404



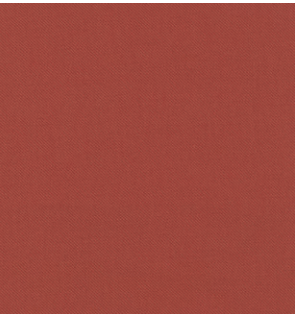
0434



0444



0464



0564



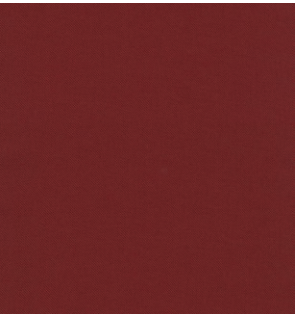
0574



0614



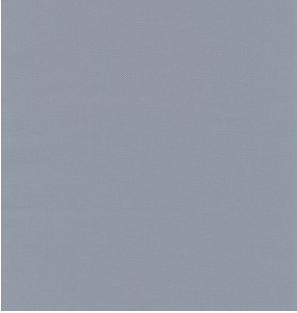
0644



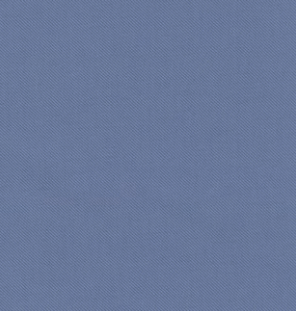
0674



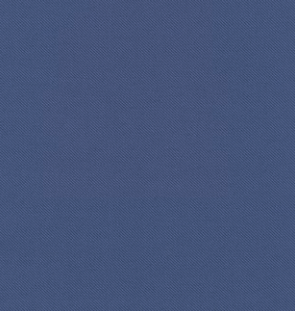
0694



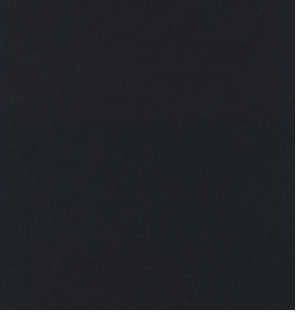
0714



0744



0774



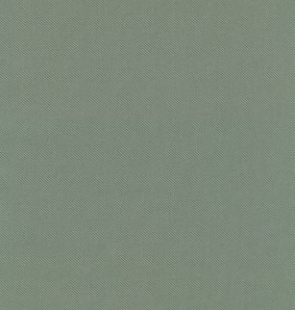
0794



0824



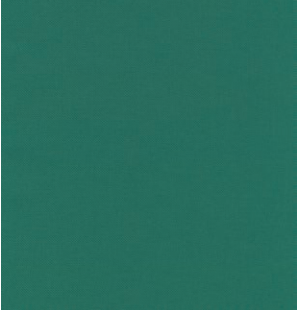
0884



0924



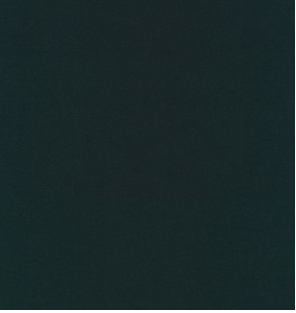
0944



0964



0984



0994

SAVANNA
by Kvadrat



PRICE CATEGORY
2

MANUFACTURER
Kvadrat

MATERIALS
34% Polyester
31% Wool
26% Acrylic
4% Cotton
3% Nylon
2% Linen

MARTINDALE
45.000

LIGHTFASTNESS
6-7

PILLING
3



242



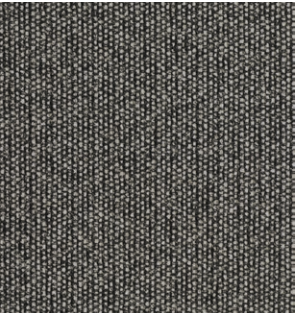
262



622



122



152



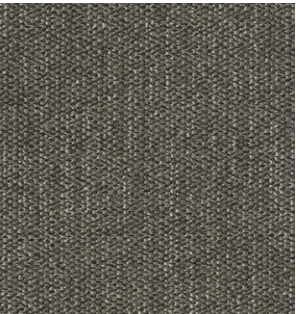
222



292



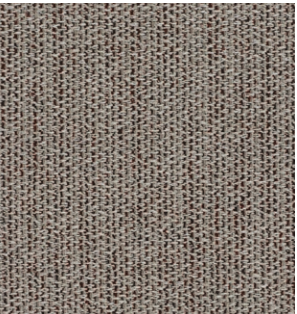
202



952



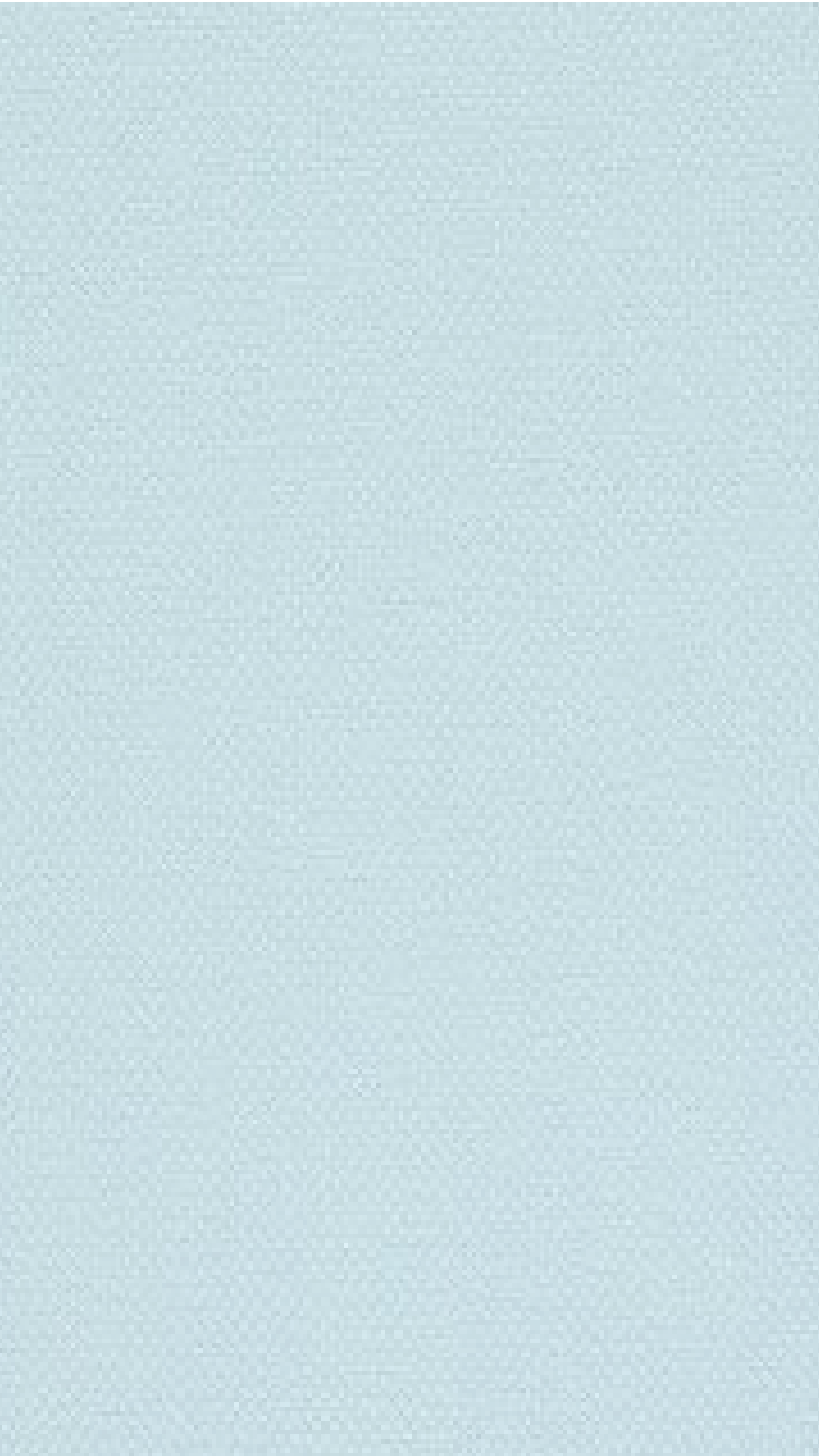
192



622



442



PRICE CATEGORY
2

MANUFACTURER
Kvadrat

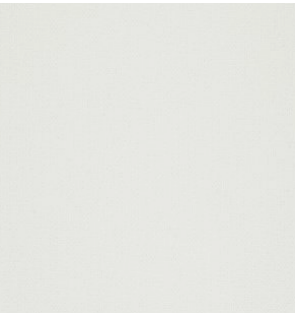
MATERIALS
90% New wool
10% Nylon

MARTINDALE
100.000

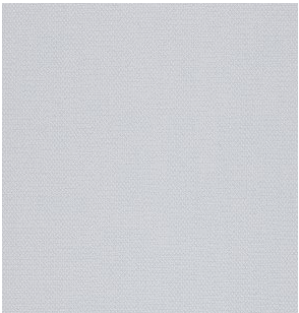
LIGHTFASTNESS
5-7

PILLING
3-4

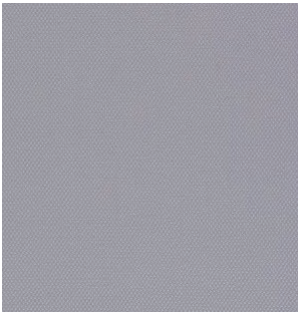
STEELCUT 2
by Kvadrat



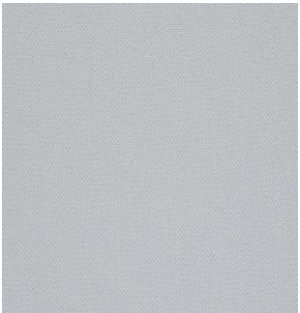
110



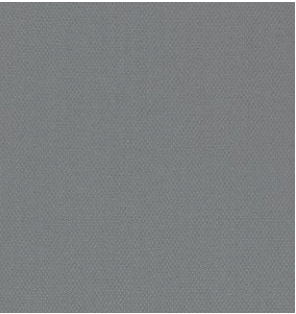
120



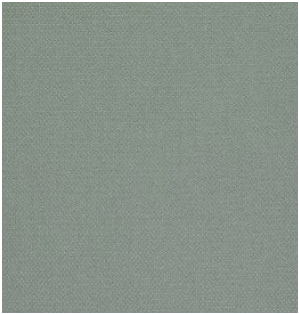
135



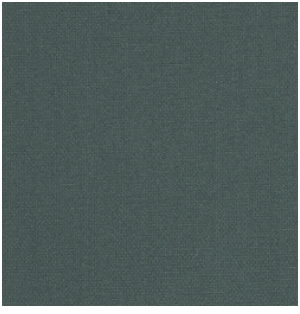
140



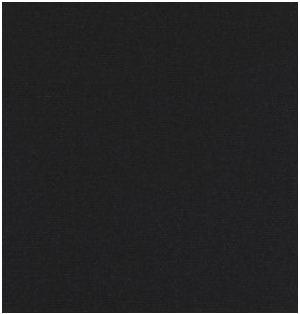
155



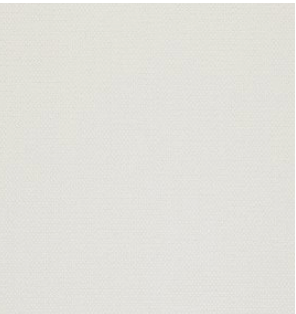
160



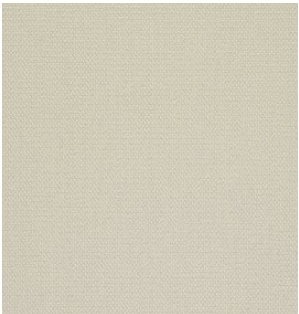
180



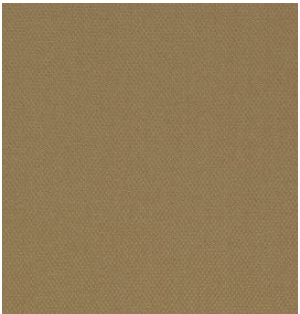
190



220



240



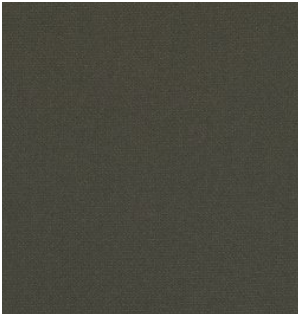
255



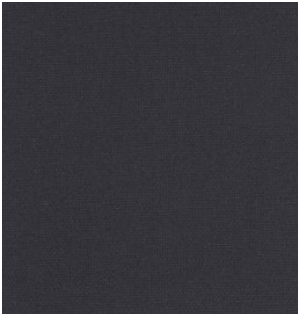
265



365



370



380



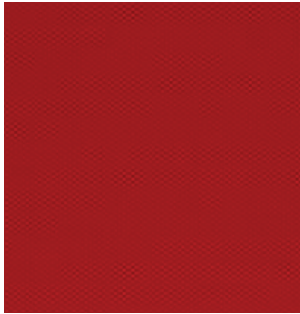
435



445



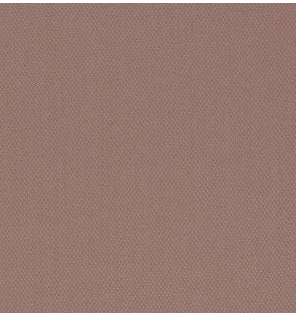
535



545



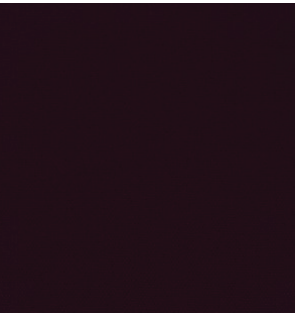
550



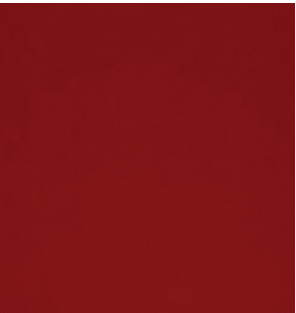
605



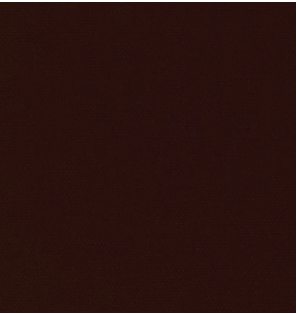
615



625



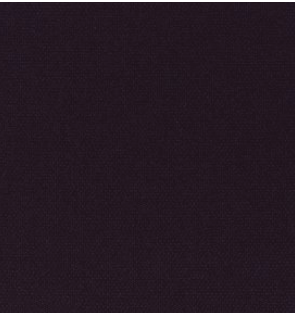
635



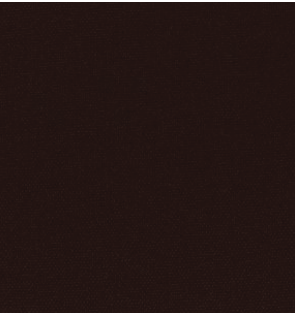
655



660



685



695



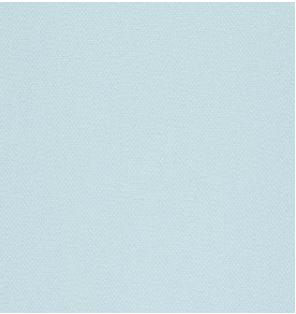
760



775



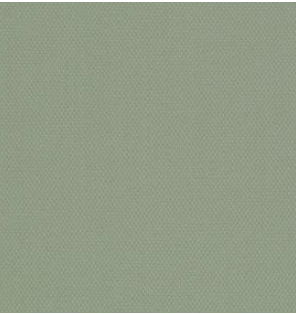
780



820



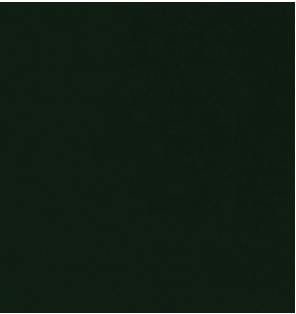
835



935



950



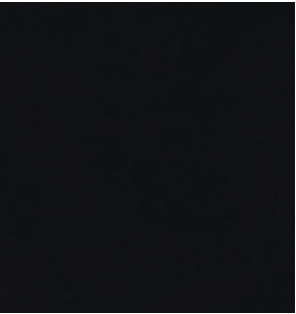
975



985



1122

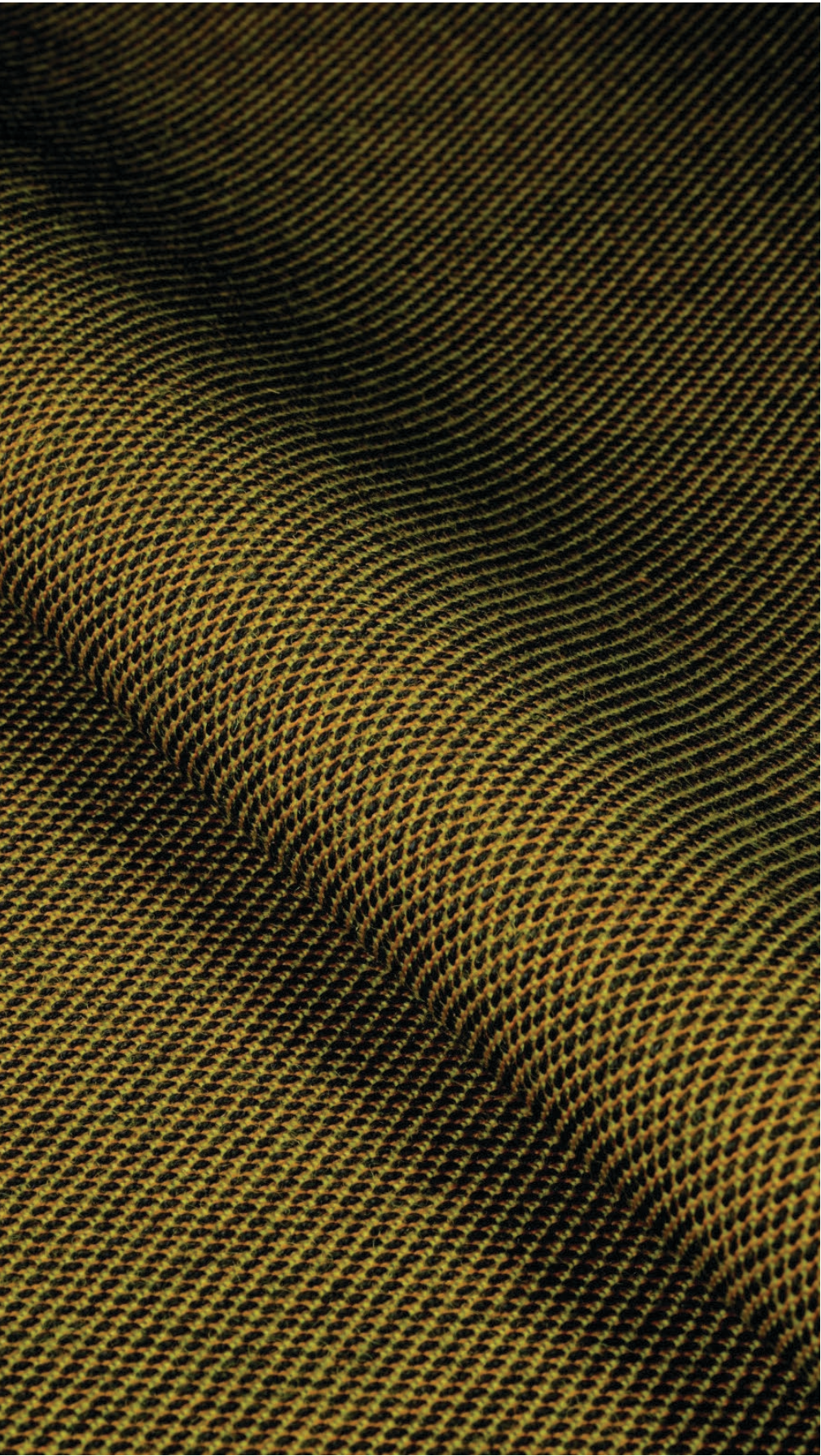


0917



1362

STEELCUT TRIO 3
by Kvadrat



PRICE CATEGORY
2
MANUFACTURER
Kvadrat
MATERIALS
90% New wool
10% Nylon
MARTINDALE
100.000
LIGHTFASTNESS
5-7
PILLING
4

105	113	124	133
153	176	195	205
213	226	236	246
253	266	276	283
336	376	383	416

STEELCUT TRIO 3
by Kvadrat



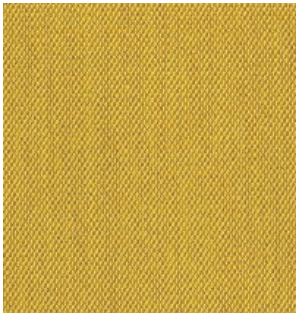
426



436



446



453



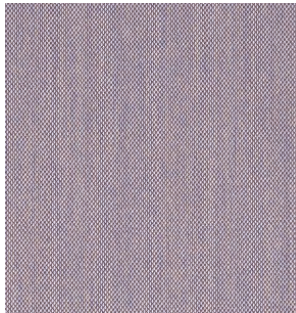
756



776



796



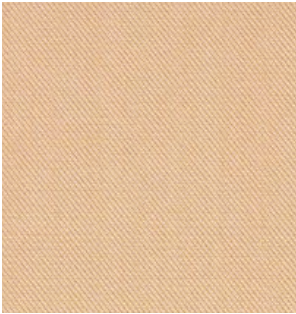
806



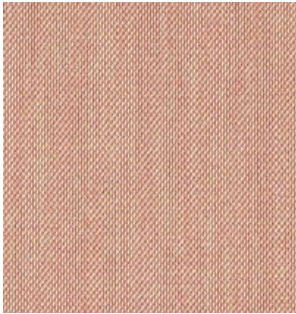
466



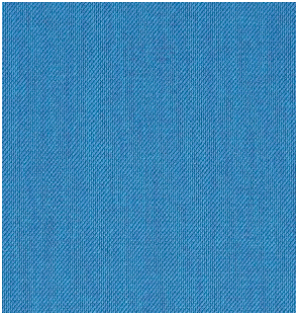
476



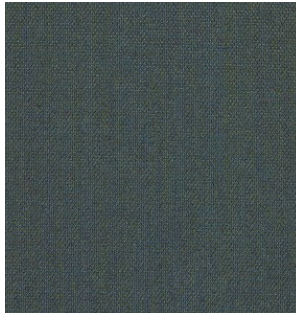
506



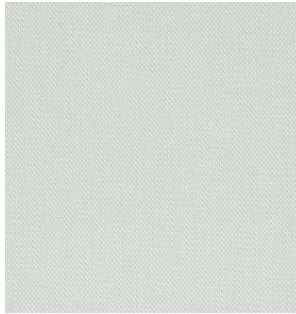
515



865



883



906



916



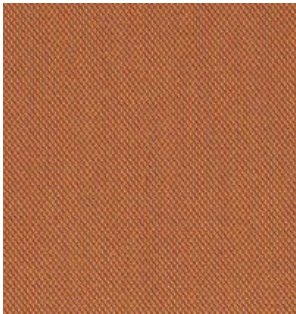
526



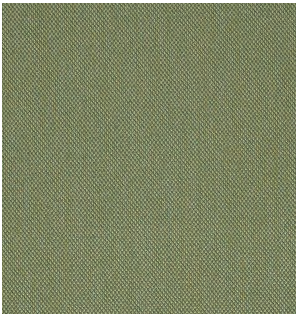
533



553



576



946



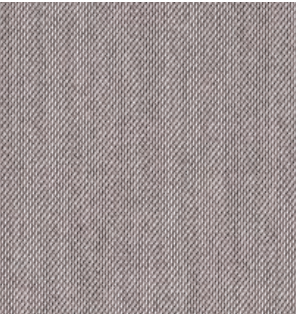
953



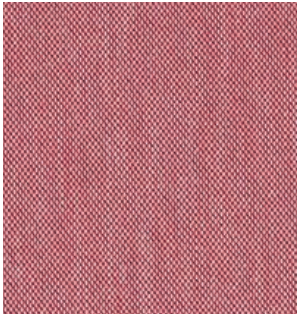
966



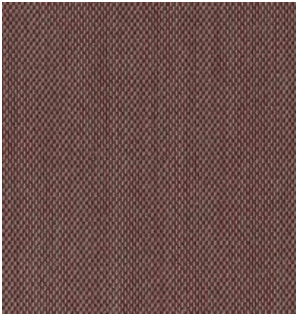
976



616



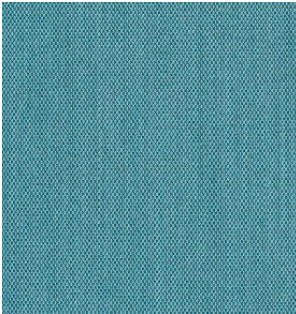
636



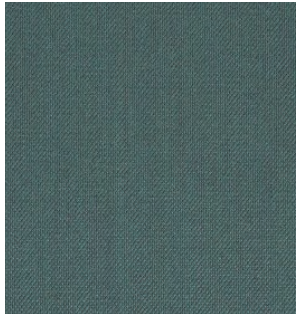
645



666



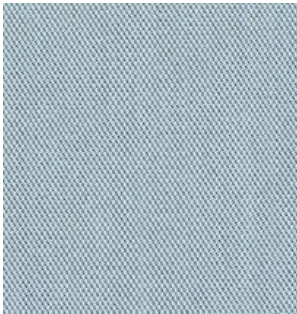
983



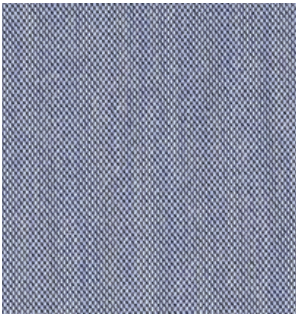
996



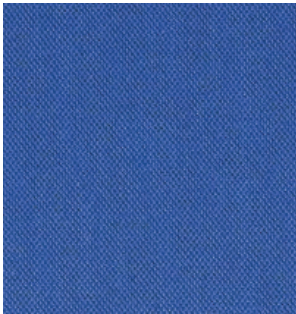
686



713



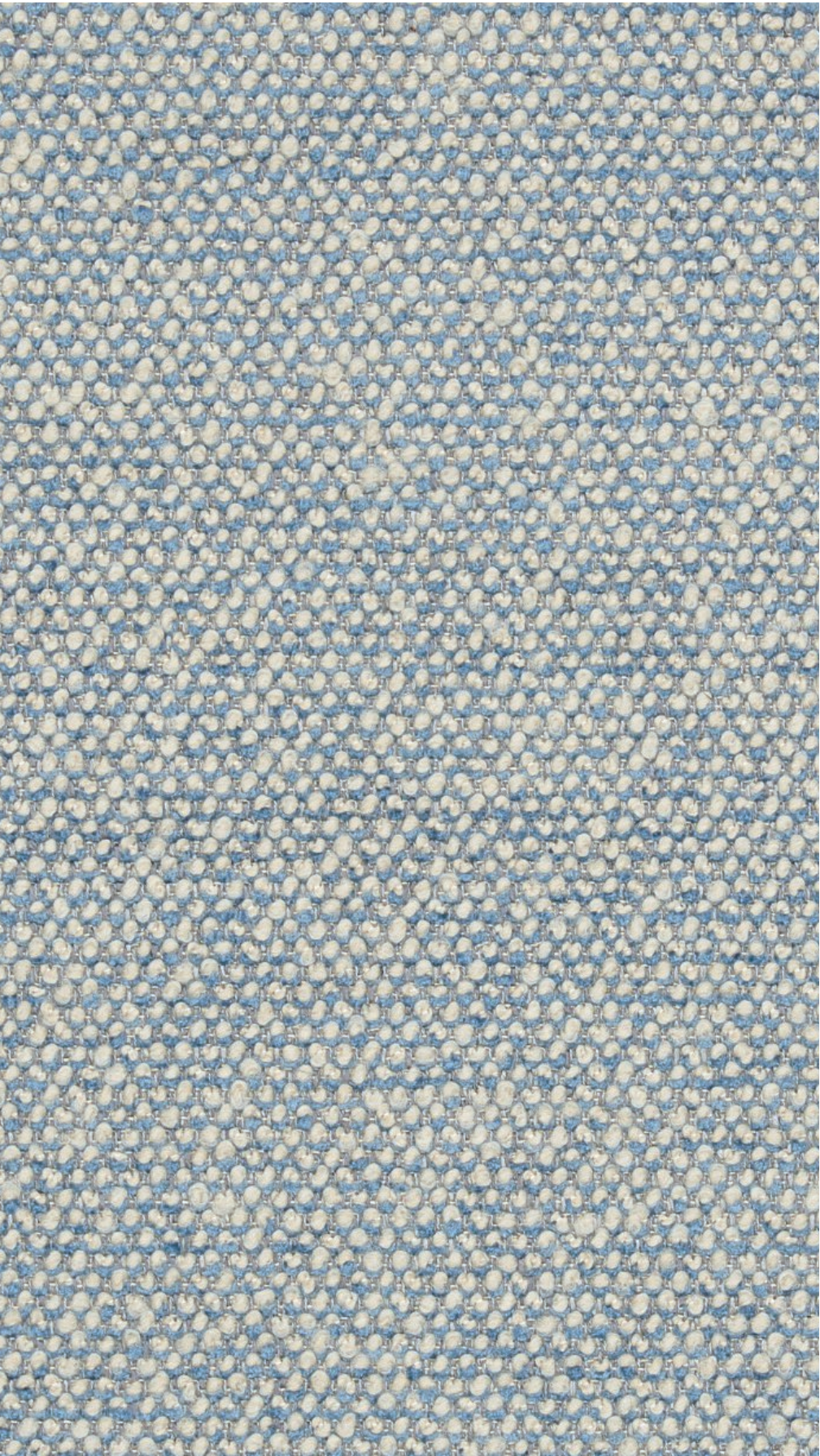
716



746

Textile Category 3

SAFIRE
by Sahco



PRICE CATEGORY
3

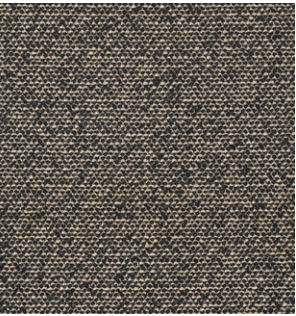
MANUFACTURER
Sahco

MATERIALS
43% Viscose
17% Polyacrylic
15% New wool
9% Cotton
8% Linen
8% Polyester

MARTINDALE
40.000

LIGHTFASTNESS
6

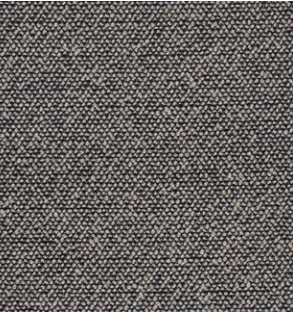
PILLING
3



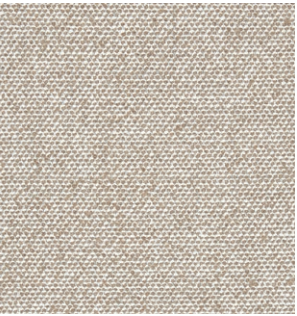
001



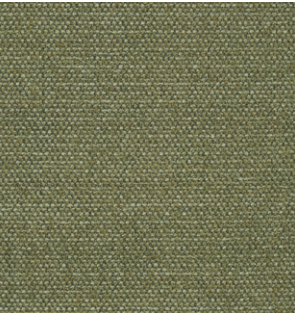
002



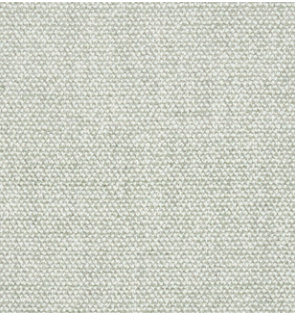
003



004



005



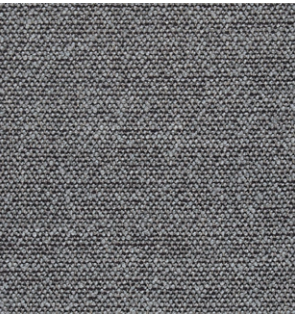
006



007



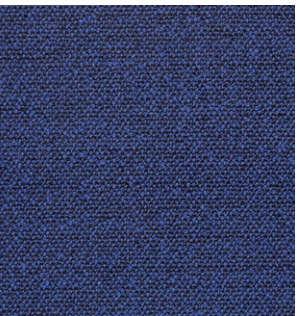
008



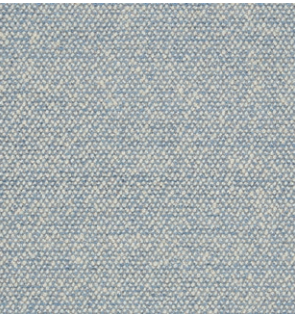
009



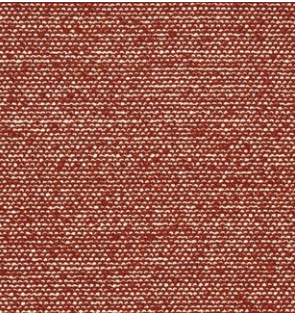
010



011



012



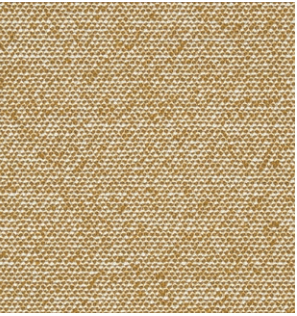
013



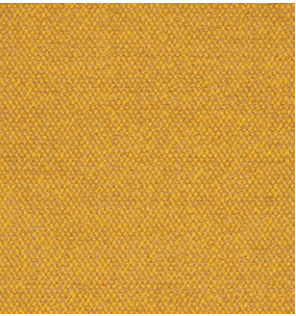
014



015



016



017

VIDAR 4
by Kvadrat



PRICE CATEGORY
3

MANUFACTURER
Kvadrat

MATERIALS
94% New wool
6% Nylon

MARTINDALE
100.000

LIGHTFASTNESS
7 (ISO 1-8)

PILLING
4 (ISO 1-5)

0106	0123	0133	0143
0146	0152	0182	0222
0323	0333	0353	0363
0386	0443	0456	0472
0526	0542	0554	0556



0582



0622



0633



0653



1880



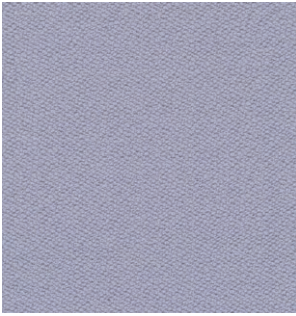
0656



0676



0693



0723



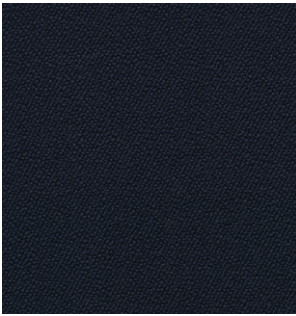
0733



0743



0772



0786



0872



0913



0932



0943



0956



0972



1062



1511

ZERO
by Kvadrat



PRICE CATEGORY
3

MANUFACTURER
Kvadrat

MATERIALS
65% cotton
20% polyacrylic
15% polyester

MARTINDALE
70.000

LIGHTFASTNESS
5-6 (ISO 1-8)

PILLING
5 (ISO 1-5)



0001



0002



0003



0004



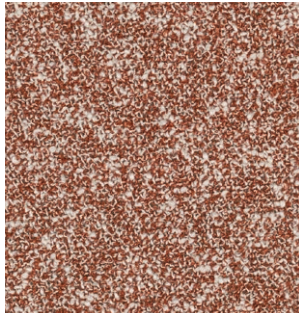
0005



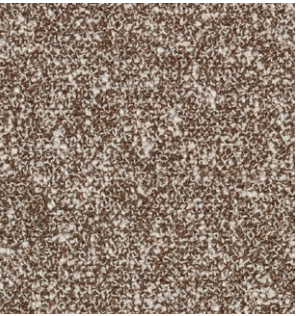
0006



0007



0008



0009



0010



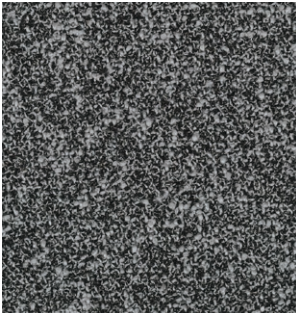
0011



0012



0013



0014



0015



0016

Textile Category 4

GRAND MOHAIR
by Danish Art Weaving



PRICE CATEGORY
4

MANUFACTURER
Danish Art Weaving

MATERIALS
100% Mohair

MARTINDALE
Being tested
(>200.000 Wyzenbeek)

LIGHTFASTNESS
4,5 (ISO 1-8)

PILLING
Being tested

CERTIFICATES
Oeko-Tex



1103



2600



8205

The Audo upholstery programme shows an overview of our textile and leather standard programme. All textile and leather collections are available in all colours.

Please note that the colour references are only intended as a guide. For further information please see manufacturer websites, or contact your local Audo sales representative.

Selection of textiles or leather outside of our upholstery programme, is subject to final testing and approval. Additional deliverytime may also occur.

SORENSENLEATHER.COM
NEVOTEX.COM



Use table to determine the upholstery options available for fabric-covered items.

PRICE CATEGORY 1	AFTERROOM	BRASILIA	CO CHAIR	CONSTANCE CHAIR	HARBOUR CHAIR	HARBOUR LOUNGE CHAIR	INGEBORG	KNITTING CHAIR	MERKUR	MINGLE	MY OWN CHAIR	READY	THE TIRED MAN	VILHELM	THE PENGUIN	ELIZABETH	THE SEAL
DAKAR, NEVOTEX	●	●	●		●	●	○	○	●		○	●	○	○	●	●	●
ENVY, SØRENSEN LEATHER	○	○	○				○	○	○		○	○	○	○	○	○	○
ULTRA, SØRENSEN LEATHER	●	●	●		●	○	○	○	●		○	●	○	○	○	○	○
PRICE CATEGORY 2																	
DUNES, SØRENSEN LEATHER	●	●	●		●	○	○	○	●		○	●	○	○	●	●	●
NUANCE, SØRENSEN LEATHER	●	○	●		●	●	○	○	○		○	○	○	○	○	○	○
PRICE CATEGORY 3																	
ROYAL NUBUCK, SØRENSEN LEATHER	●	○	●		●	●	○	○	○		○	○	○	○	○	○	○
SHEEPSKIN CURLY, SKANDILOCK				●			●			●	●		●	●			
SHEEPSKIN CURLY, NEVOTEX		●						○									
PRICE CATEGORY 4																	
ELEGANCE, SØRENSEN LEATHER	●	○	●		●	○		○			○		○		●	●	●

- TESTED AND APPROVED.
- NOT TESTED YET, BUT POSSIBLE TO TEST

Leather Category 1

DAKAR
by Nevotex



PRICE CATEGORY
1

MANUFACTURER
Nevotex

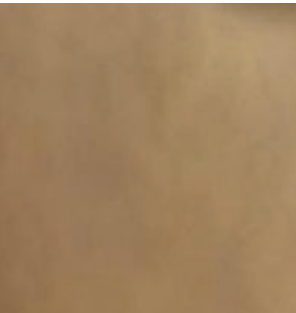
MATERIALS
Aniline leather

THICKNESS
0.9 – 1.1 mm

CERTIFICATE
OEKO-TEX®



0197 TAN



0229 CHESTNUT



0250 COGNAC



0258 SOIL



0311 ANTILOP



0329 BROWN



0549 DUNE



0550 YELLOW



0551 WHISKY



0565 ORANGE



0681 DARK GREEN



0691 TERRAGON



0692 LIGHT GREEN



0738 AUBERGINE



0778 TURKIS



0779 DEEP BLUE



0780 DARK GREY



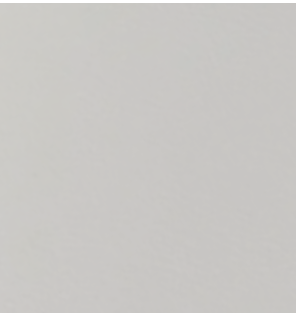
0842 BLACK



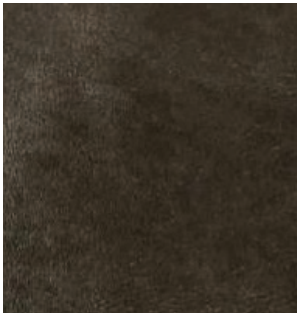
0854 GREY



0855 GRAYSHADOW



01015 WHITE



03009 CIOOCO



04009 PARROT



04010 POT-PORRY



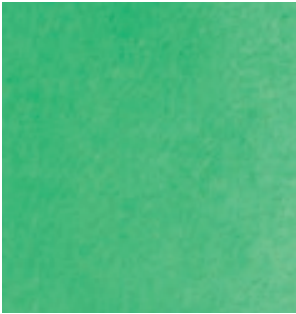
04060 PURPLE



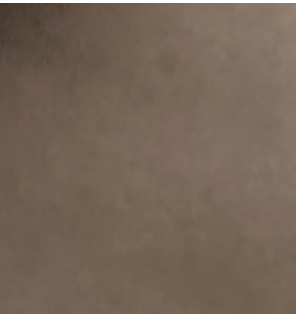
04109 RED



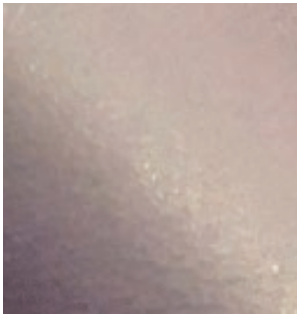
04147 DARK RED



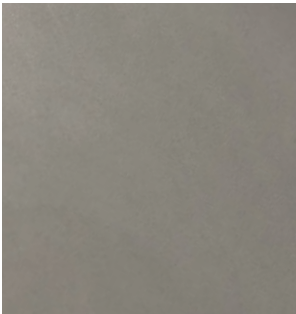
06013 GREEN



06048 PEATMOOS



07008 DARK PURPLE



08079 LIGHT GREY

ENVY
by Sørensen Leather



PRICE CATEGORY
1

MANUFACTURER
Sørensen Leather

MATERIALS
Aniline leather

THICKNESS
1,0-1,2 mm



COGNAC - 20320



BLACK - 20321



NOUGAT - 20322



ANTHRAZITE - 20323



OLIVE - 20324



PRICE CATEGORY
1

MANUFACTURER
Sørensen Leather

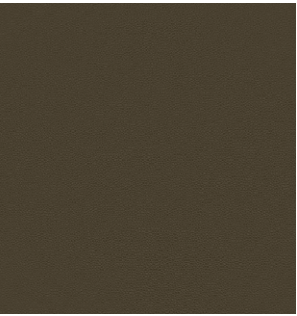
MATERIALS
Protected leather

THICKNESS
0.9 – 1.1 mm

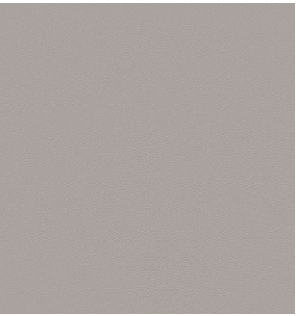
			
BLACK - 41599	BLACK BROWN - 41590	NAVY - 41573	ANTHRAZITE - 41580
			
LAVA - 41575	CHOCOLATE - 41589	GREY - 41585	SAFARI - 41586
			
EARTH - 41584	ALTWEISS - 41576	EGGSHELL - 41581	WHITE - 41594
			
BRICK - 41579	POPPY - 41578	COGNAC - 41598	BRANDY - 41574
			
CAMEL - 41571	HONEY - 41572	LEAF - 41566	MARSH - 41570

LEATHER

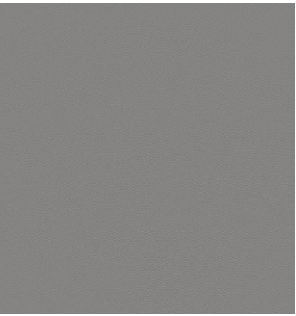
ULTRA
by Sørensen Leather



MOSS - 41569



OAT - 41568



SMOKE - 41567

Leather Category 2

DUNES
by Sørensen Leather



PRICE CATEGORY
2
MANUFACTURER
Sørensen Leather
MATERIALS
Aniline leather
THICKNESS
1.1 – 1.3 mm
CERTIFICATE
Nordic Swan Ecolabel



DARK BROWN - 21001



RUST - 21002



CAMEL - 21004



ANTHRAZITE - 21003



COGNAC - 21000



RACING GREEN - 21005



GREY - 21007

NUANCE
by Sørensen Leather



PRICE CATEGORY
2

MANUFACTURER
Sørensen Leather

MATERIALS
Protected leather

THICKNESS
1.1 – 1.3 mm



SHADOW GREY - 40780



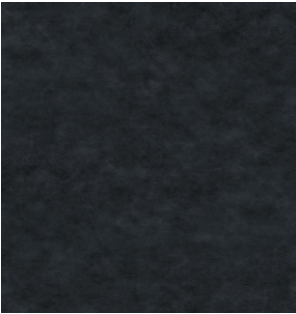
EARTHY GREY - 40781



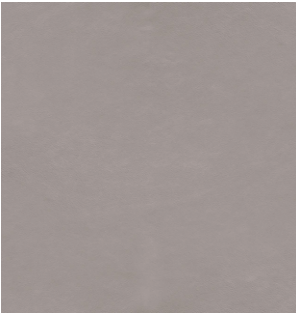
HEAVENLY GREY - 40781



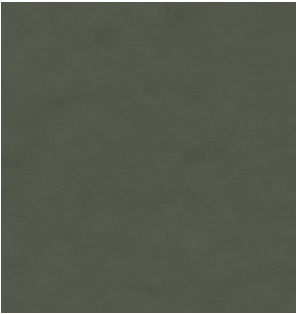
SMOKED GREY - 40784



BURNED GREY - 40783



LIGHT GREY - 40782



DARK GREEN - 40787



DARK BROWN - 40791



CINNAMON - 40788



BURGUNDY - 40789



WALNUT - 40790



RUST - 40786

Leather Category 3

ROYAL NUBUCK
by Sørensen Leather



PRICE CATEGORY
3

MANUFACTURER
Sørensen Leather

MATERIALS
Aniline leather

THICKNESS
1.2 – 1.6 mm



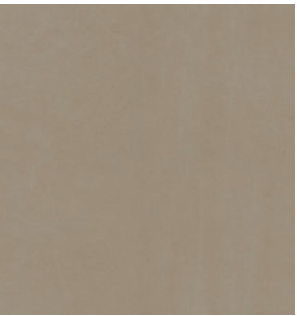
MINERAL - 30251



HAVANNA - 30258



STONE - 30255



OFF-WHITE - 30252



LAVA - 30254



CINNAMON - 30257



ALMOND - 30256



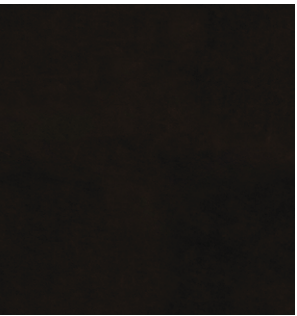
LIGHT GREY - 30250



ECRU - 30253



COGNAC - 30260



BLACK - 30259

SHEEPSKIN
by Skandilock



PRICE CATEGORY
3

MANUFACTURER
Skandilock

MATERIALS
Sheepskin

THICKNESS
17 mm



OFF WHITE



SAHARA



MOONLIGHT



HONEY



ESPRESSO



GREEN TEA



SHEEPSKIN
by Nevotex

PRICE CATEGORY
3

MANUFACTURER
Nevotex

MATERIALS
Sheepskin

THICKNESS
17 – 21mm



NATURE



SAHARA



ROOT

Leather Category 4



PRICE CATEGORY
4

MANUFACTURER
Sørensen Leather

MATERIALS
Aniline leather

THICKNESS
1.2 – 1.4 mm



BLACK - 20198



INDIAN RED - 20193



WALNUT - 20195



MOCCA - 20197

NATURAL MARKINGS ON LEATHER

Individual and unique markings may appear on the leather and should not be considered as defects.



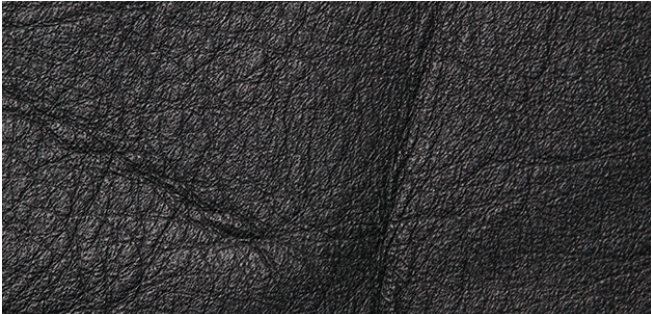
FAT WRINKLES



SCAR / INSECT BITES



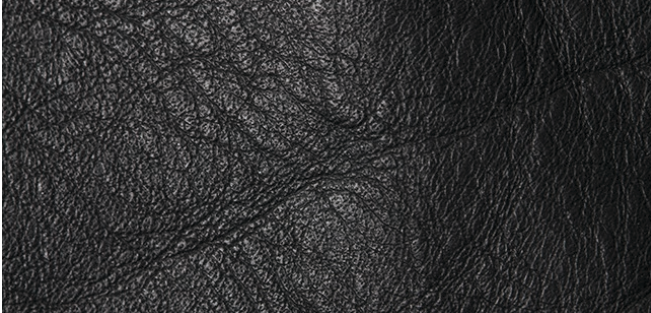
FOLDS



BUTCHING SCAR



HEALED SCARS



FAT WRINKLES

