



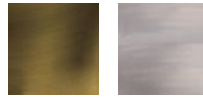
Project:

Location:

Fixture Type:

Catalog Number:

**AVAILABLE FINISHES:**



## Cadiz

PD-14518

**PRODUCT DESCRIPTION**

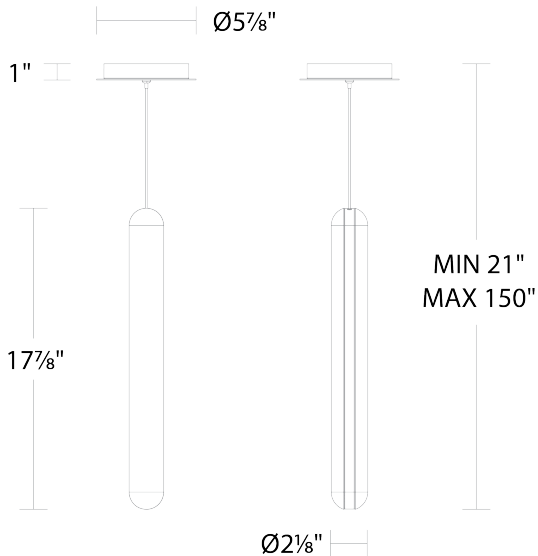
The organic Cadiz pendant radiates a rich, luminous glow from a tall cylinder of Spanish Alabaster encased in slender metallic straps, showcasing the stone's distinctive natural patterns. Its elongated design makes this pendant ideal for hanging in groups, adding a touch of elegance to any space.

**FEATURES**

- Driver concealed within the canopy
- First class quality Spanish alabaster
- Natural alabaster with unique veining in each crafted piece
- Spin-on round canopy with minimal hardware
- Thin, powered aircraft cables prove an ultra-clean look

**SPECIFICATIONS**

Rated Life	50,000 Hours
Standards	ETL, cETL, Damp Location Listed, Title 24 JA8: 2019 Compliant
Input	120-277 VAC, 50/60Hz
Dimming	ELV: 100-10%, TRIAC: 100-10%
Color Temp	3000K
CRI	90
Construction	Aluminum frame with alabaster diffuser



PD-14518

Model & Size	Color Temp	Finish	LED Watts	LED Lumens	Delivered Lumens
PD-14518 18"	3000K 3000K	AB Aged Brass AN Antique Nickel	20.8W 20.8W	2075 2075	1551 1551

Example: **PD-14518-AN**

For custom requests please contact [customs@modernforms.com](mailto:customs@modernforms.com)