

# INSTALLATION INSTRUCTIONS

## LED Pendant

PD284620

MODERN FORMS®

**CAUTION:** To prevent electrical shock, ensure electricity has been turned off at the circuit breaker before beginning.

- Read all instructions before installing.
- System is intended for installation by a licensed electrician in accordance with the National Electrical Code (NEC) and local regulations.
- When handling the fixture, do not apply pressure to the LEDs. Hold the fixture by the base only.
- Retain installation instructions for future maintenance reference.

**WARNING:** All parts must be used as indicated in these instructions. This product is designed for use only with the supplied parts and/or accessories designated for use by Modern Forms. Substitution of parts or accessories not designated for use with this product by Modern Forms could result in personal injury or property damage, and will void the warranty. Contact an authorized dealer or the manufacturer if any parts are damaged or missing.

**MAINTENANCE NOTE:** Coastal conditions may cause mineral and residue build-up on the fixture. We recommend that customers in coastal areas clean all external surfaces of the fixture once every two weeks with a wet cloth.

**MISE EN GARDE:** Pour éviter tout choc électrique, assurez-vous que le disjoncteur soit mis hors tension avant de commencer.

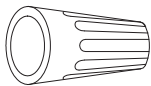
- Lisez toutes les instructions avant l'installation.
- Le système doit être installé par un électricien licencié conformément au code national de l'électricité (NEC), et également aux règlements locaux.
- Lors de la manipulation du luminaire, n'appuyez pas sur les LED. Tenez-le uniquement par la base.

**ATTENTION:** Toutes les pièces doivent être utilisées comme indiqué dans ces instructions. Ce produit est conçu pour être utilisé seulement avec les pièces et/ou accessoires fournis pour être utilisés avec les produits Modern Forms. Remplacer des pièces ou accessoires non conçus pour ce produit Modern Forms pourrait causer des dommages corporels ou matériels et pourrait également causer l'annulation de la garantie. Veuillez contacter un revendeur autorisé ou le fabricant si des pièces manquent ou sont endommagées.

**NOTE D'ENTRETIEN:** Les conditions côtières peut causer une accumulation de minéraux et de résidus sur le luminaire. Nous recommandons aux clients qui résident dans les zones côtières de nettoyer toutes les surfaces externes du luminaire une fois toutes les deux semaines avec un chiffon humide.

## HARDWARE

A



Wire Connector(P3)  
Qty: 3pcs+1Extra

B



Mounting Screw  
Qty: 1Extra

C



Fixed Screw  
Qty: 1Extra

D



Small Decorative Cover  
Qty: 1Extra

E



Wire Connector(P1)  
Qty: 2pcs+1Extra

ModernForms.com  
Phone (866) 810-6615  
Fax (800) 526-2585

Headquarters, East Manufacturing Facility  
44 Harbor Park Drive  
Port Washington, NY 11050

South East Manufacturing Facility  
1600 Distribution Ct  
Lithia Springs, GA 30122

Central Manufacturing Facility  
1700 South J Elmer Freeway, Ste 100  
Cedar Hill, TX 75104

West Manufacturing Facility  
1750 S Archibald Ave  
Ontario, CA 91761

# INSTALLATION INSTRUCTIONS

## LED Pendant

PD284620

MODERN FORMS®

### PREPARATION

1. Shut off the power at the circuit breaker and remove existing fixture, including the crossbar.
2. Carefully unpack your new fixture and lay out all the parts on a clear area. Be care not to lose any small parts necessary for installation.

### MOUNTING THE FIXTURE (Fig.1)

3. Remove the mounting screws(B) from the fixture, take down the mounting plate.
4. Remove the small decorative cover(D) and take off the fixed screws(C).
5. Carefully pull out the upper end of the arm (with the decorative cover), then lift the bottom of the arm up a little and pull it out. Separate the bottom of the arm from the frame and put the glass into the fixture, then adjust the position of the arm and assemble it according to the original. After connecting the male terminal wire and the female terminal wire at the top of the fixture, insert the wire into the fixture, then slowly align the spring piece at the bottom of the arm with the slot on the other of the fixture, and then push it hard.
6. After installing the fixed screws(C), conceal it with the small decorative cover(D).
7. Choose the number of rods suitable for your application, pass the wires through the rods and the canopy, connect the fixture with the rods and the canopy, and make sure everything is tightened.

**Note:** (i) Due to limited space within the canopy, shorten the cable as necessary to make the installation easier. Make sure to identify and label all the wiring properly before any trimming/shortening. (Fig. 3)

8. Secure the mounting plate to the junction box using standard junction box screws that comes with the junction box.

**Note:** (i) Using any other non-original-manufacturer provided junction box screw may result in safety issue;

(ii) The side of the mounting plate marked "GND" must face out.

### CONNECTING THE WIRES (Fig. 2)

9. Secure the fixture to the bracket on the mounting plate using a field inspection supporting cable as shown in Fig.1, and this aids in wiring.

**Note:** When installing or inspecting the circuit, please remove all removable accessories(crystal, lampshades, etc.).

10. Connect the driver input wires to the junction box wires as shown in Fig. 2 using wire connectors (A) provided. Ensure wire connectors are secured, connect the fixture's ground wire to the ground in the junction box, this will be either a green wire or a bare copper wire. After driver is wired to house wires, tuck wires carefully inside the junction box.

### COMPLETING THE INSTALLATION (Fig. 1)

11. Mount the canopy against the mounting plate. Secure the fixture using the mounting screws(B).
12. For slope ceiling application, rotate swivel at the top of the stem to ensure luminaries is aiming down (Fig. 4).

Fig. 1

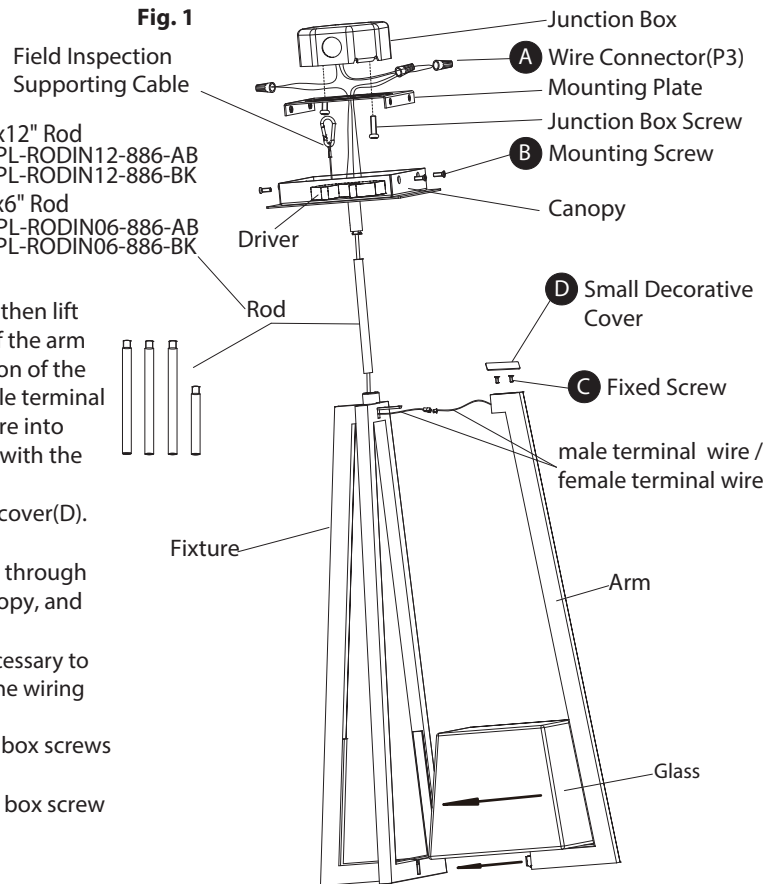


Fig. 3 Driver Wires

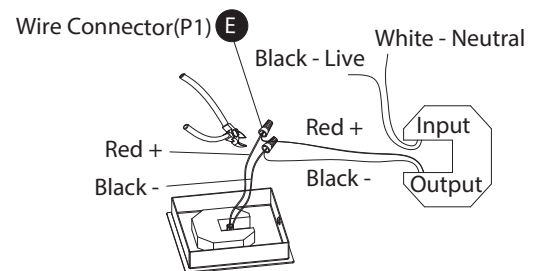
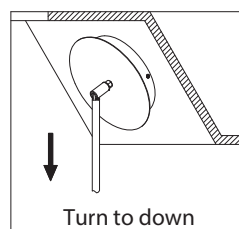


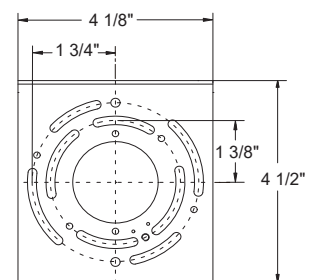
Fig. 2 Wiring

Fixture Wires Black or Smooth	House Wires Black (Live)
Fixture Wires White or Ribbed	House Wires White (Neutral)
Fixture Wires Bare wire (Ground)	House Wires Green or Bare Copper (Ground)

Fig.4



Mounting Plate Dimensions



ModernForms.com  
Phone (866) 810-6615  
Fax (800) 526-2585

Headquarters, East Manufacturing Facility  
44 Harbor Park Drive  
Port Washington, NY 11050

South East Manufacturing Facility  
1600 Distribution Ct  
Lithia Springs, GA 30122

Central Manufacturing Facility  
1700 South J Elmer Freeway, Ste 100  
Cedar Hill, TX 75104

West Manufacturing Facility  
1750 S Archibald Ave  
Ontario, CA 91761