

624-LED PENDANT

PD602624

CAUTION: To prevent electrical shock, ensure electricity has been turned off at the circuit breaker before beginning.

- Read all instructions before installing.
- System is intended for installation by a licensed electrician in accordance with the National Electrical Code (NEC) and local regulations.
- When handling the fixture, do not apply pressure to the LEDs. Hold the fixture by the base only.
- Retain installation instructions for future maintenance reference.

WARNING: All parts must be used as indicated in these instructions. This product is designed for use only with the supplied parts and/or accessories designated for use by Modern Forms. Substitution of parts or accessories not designated for use with this product by Modern Forms could result in personal injury or property damage, and will void the warranty. Contact an authorized dealer or the manufacturer if any parts are damaged or missing.

MAINTENANCE NOTE: Coastal conditions may cause mineral and residue build-up on the fixture. We recommend that customers in coastal areas clean all external surfaces of the fixture once every two weeks with a wet cloth.

MISE EN GARDE: Pour éviter tout choc électrique, assurez-vous que le disjoncteur soit mis hors tension avant de commencer.

- Lisez toutes les instructions avant l'installation.
- Le système doit être installé par un électricien licencié conformément au code national de l'électricité (NEC), et également aux règlements locaux.
- Lors de la manipulation du luminaire, n'appuyez pas sur les LED. Tenez-le uniquement par la base.

ATTENTION: Toutes les pièces doivent être utilisées comme indiqué dans ces instructions. Ce produit est conçu pour être utilisé seulement avec les pièces et/ou accessoires fournis pour être utilisés avec les produits Modern Forms. Remplacer des pièces ou accessoires non conçus pour ce produit Modern Forms pourrait causer des dommages corporels ou matériels et pourrait également causer l'annulation de la garantie. Veuillez contacter un revendeur autorisé ou le fabricant si des pièces manquent ou sont endommagées.

NOTE D'ENTRETIEN: Les conditions côtières peut causer une accumulation de minéraux et de résidus sur le luminaire. Nous recommandons aux clients qui résident dans les zones côtières de nettoyer toutes les surfaces externes du luminaire une fois toutes les deux semaines avec un chiffon humide.

HARDWARE

A



Wire Connector(P3)
Qty: 4PCS

B



Wire Connector(P1)
Qty: 4PCS

C



Mounting Screw
Qty: 1 Extra

D



Anchor Screw
Qty: 4PCS

E



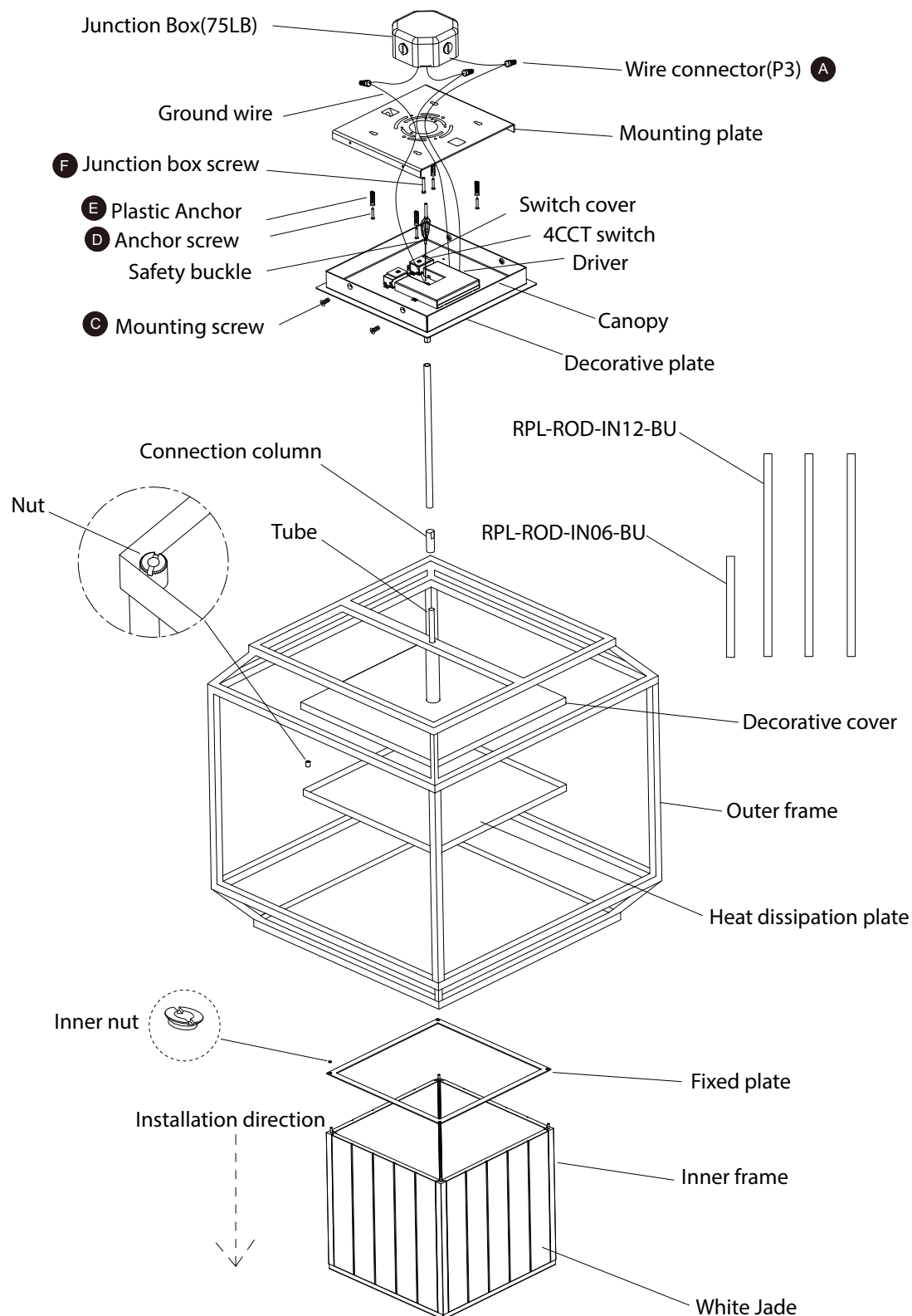
Plastic Anchor
Qty: 4PCS

F



Junction Box Screw
QTY:3pcs

Fig.1 INSTALLATION DIAGRAM



INSTALLATION INSTRUCTIONS

624-LED PENDANT

PD602624

PREPARATION

1. Shut off the power at the circuit breaker and remove existing fixture. Including the crossbar. The fixture requires 200LB junction box.
2. Carefully unpack your new fixture and lay out all the parts on a clear area. Be careful not to lose any parts necessary for installation.

MOUNTING THE FIXTURE(Fig.1)(Fig.2)(Fig.3)

3. Take the fixture out of the package.
4. Remove the connection column to separate the inner and outer frame. Remove the decorative cover and then remove the inner nuts. Remove the heat dissipation plate. (Fig.2) Remove the fixed plate.
5. Take the white jade out of the package. Insert white jade A panel into the inner frame so it lays flat, making sure the side with the groove faces outward. Then insert white jade B vertically into the inner frame, repeat this step until all the jades is placed in the inner frame. (Fig.3)
- Note:** Handle with care during operation. This step requires at least two people to operate.
6. After all the jade panels have been installed, reinstall the fixed plate and heat dissipation plate at the inner shade and retighten the fasten nuts. Then put the decorative cover back on. (Fig.3)(Fig.1)
7. This step requires the cooperation of multiple people. Firstly, pass the power cord through the holes opening in the outer frame and connection column in sequence. Then lift the inner frame into the outer frame, aligning the tube with the opening, ensuring the tube passes through the hole. Secure the frames together by tightening the connection column to the tube.(Fig.1)
8. Select the appropriate rods, pass the power cord through the rods. Connect the rods to the outer frame. Pass the power cord through the canopy and connect the canopy to the rods.
9. Drill the holes into the ceiling at the keyhole of the mounting plate. (Fig.6) Insert the plastic anchors (E) into the holes.
10. Remove the mounting screw (C) from the canopy. Secure the mounting plate to the junction box with the junction box screws.(F) Lock the anchor screws (D) into the plastic anchors. (E) Hang all safety buckles on the mounting plate.

Note: (i)Using any other non-original-manufacturer provide junction box screw may result in safety issue;

(ii)The side of the mounting plate marked"GND"must face out.

CONNECTING THE WIRES(Fig.4)(Fig.5)

11. This fixture has four color temperture(2700K-3000K-3500K-4000K). Remove the cover prior to adjusting the color temperture as needed. Then reattach the cover after the adjustment is made.

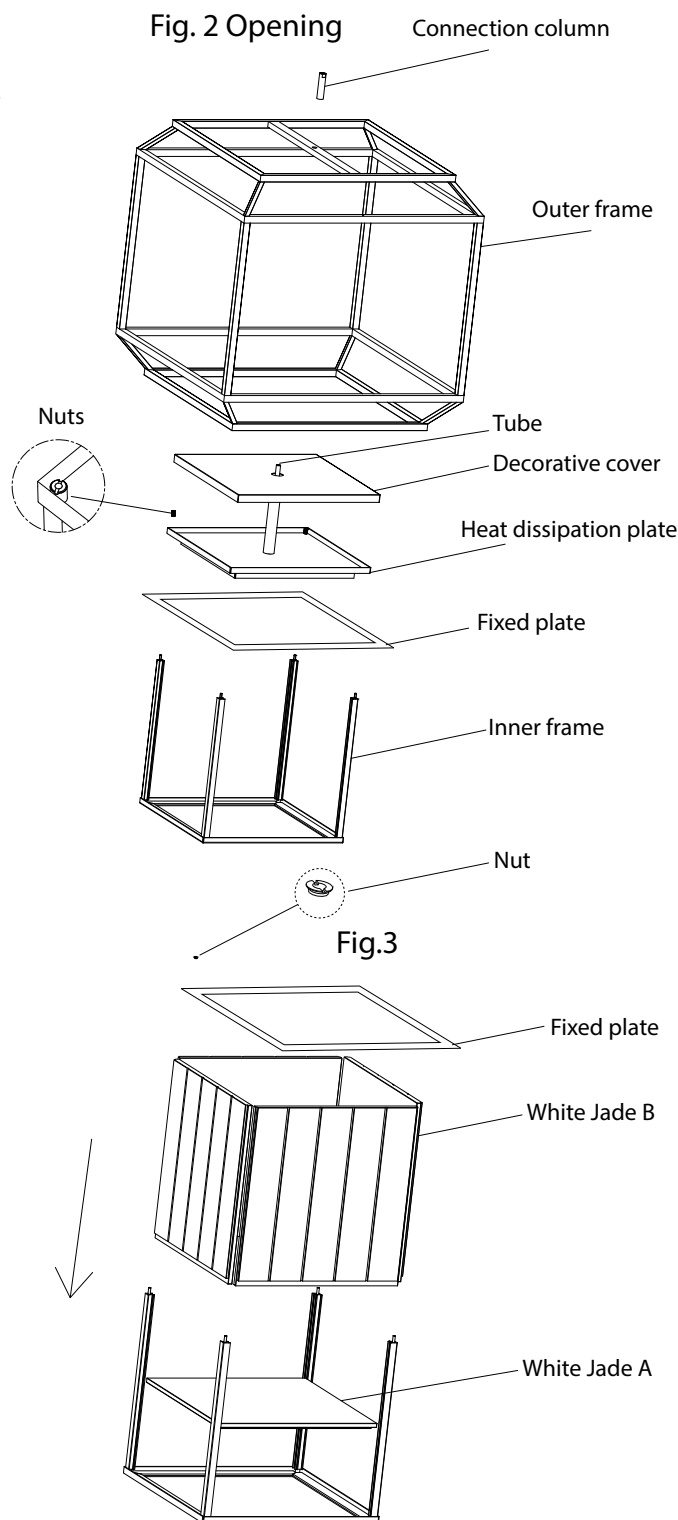
NOTE: The power must be off to change the CCT.

12. Connect the driver's inout wires to junction box wires as shown in Fig.4. Connect the power cord in the way shown in Fig.4. Make sure that all wire connectors(A) (B) are secured.
13. If your outlet box has a green or bare copper ground wire, connect the fixture's ground wire to it. Otherwise,connect the fixture's ground wire directly to the mounting plate using the grounding screw provided.
14. After wires are connected, tuck them carefully inside the junction box.

COMPLETING THE INSTALLATION(Fig.1)

15. Align the holes of the mounting plate with threaded holes of the installation plate and tighten the mounting screws.(C)
16. For slope ceiling application, rotate swivel at the top of the stem to

MODERN FORMS®



ModernForms.com
Phone (866) 810-6615
Fax (800) 526-2585

Headquarters, East Manufacturing Facility
44 Harbor Park Drive
Port Washington, NY 11050

South East Manufacturing Facility
1600 Distribution Ct
Lithia Springs, GA 30122

Central Manufacturing Facility
1700 South J Elmer Freeway, Ste 100
Cedar Hill, TX 75104

West Manufacturing Facility
1750 S Archibald Ave
Ontario, CA 91761

624-LED PENDANT

PD602624

NOTE: DIMMING WIRING INFORMATION (FIG. 4)

17. This fixture features electronic low voltage (ELV or TRIAC) or 0-10V dimming capabilities. See notes below for specific dimming wires information.

1. To utilize ELV or TRIAC dimming: use wire purple (Dim+), pink or gray (Dim-), black (Hot), white (Neutral) and bare copper ground wire (ground).
2. To utilize 0-10V dimming: use wire purple (Dim+), pink or gray (Dim-), black (Hot), white (Neutral) and bare copper ground wire (ground).

NOTE: Make sure to connect 0-10V prior to power-up the fixture in order to allow the 0-10V dimming to function properly.

Fig.4

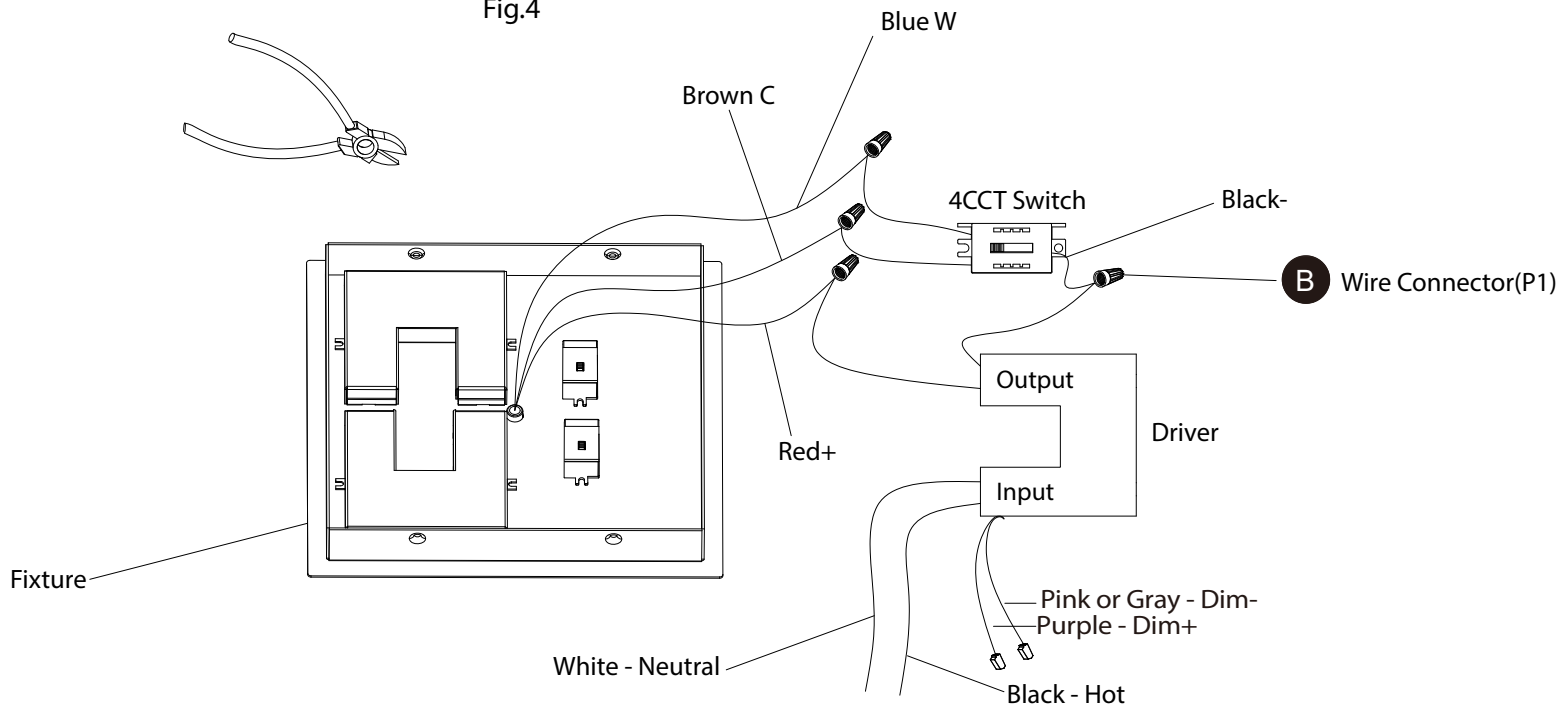
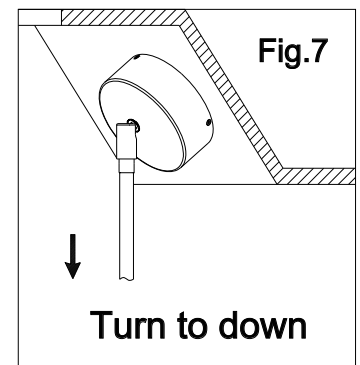
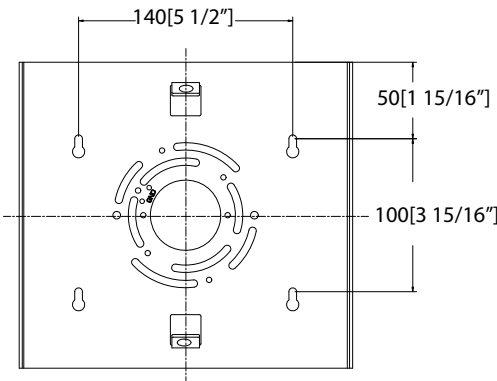
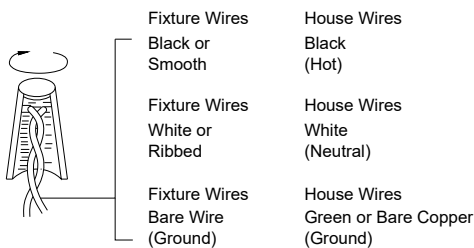


Fig.6 Mounting Plate

Fig.5 Wiring



ModernForms.com
Phone (866) 810-6615
Fax (800) 526-2585

Headquarters, East Manufacturing Facility
44 Harbor Park Drive
Port Washington, NY 11050

South East Manufacturing Facility
1600 Distribution Ct
Lithia Springs, GA 30122

Central Manufacturing Facility
1700 South J Elmer Freeway, Ste 100
Cedar Hill, TX 75104

West Manufacturing Facility
1750 S Archibald Ave
Ontario, CA 91761