

# INSTALLATION INSTRUCTIONS

## 2006-LED WALL SCONCE

### WS200631/WS200624

MODERN FORMS®

**CAUTION:** To prevent electrical shock, ensure electricity has been turned off at the circuit breaker before beginning.

- Read all instructions before installing.
- System is intended for installation by a licensed electrician in accordance with the National Electrical Code (NEC) and local regulations.
- When handling the fixture, do not apply pressure to the LEDs. Hold the fixture by the base only.
- Retain installation instructions for future maintenance reference.

**WARNING:** All parts must be used as indicated in these instructions. This product is designed for use only with the supplied parts and/or accessories designated for use by Modern Forms. Substitution of parts or accessories not designated for use with this product by Modern Forms could result in personal injury or property damage, and will void the warranty. Contact an authorized dealer or the manufacturer if any parts are damaged or missing.

**MAINTENANCE NOTE:** Coastal conditions may cause mineral and residue build-up on the fixture. We recommend that customers in coastal areas clean all external surfaces of the fixture once every two weeks with a wet cloth.

**MISE EN GARDE:** Pour éviter tout choc électrique, assurez-vous que le disjoncteur soit mis hors tension avant de commencer.

- Lisez toutes les instructions avant l'installation.
- Le système doit être installé par un électricien licencié conformément au code national de l'électricité (NEC), et également aux règlements locaux.
- Lors de la manipulation du luminaire, n'appuyez pas sur les LED. Tenez-le uniquement par la base.

**ATTENTION:** Toutes les pièces doivent être utilisées comme indiqué dans ces instructions. Ce produit est conçu pour être utilisé seulement avec les pièces et/ou accessoires fournis pour être utilisés avec les produits Modern Forms. Remplacer des pièces ou accessoires non conçus pour ce produit Modern Forms pourrait causer des dommages corporels ou matériels et pourrait également causer l'annulation de la garantie. Veuillez contacter un revendeur autorisé ou le fabricant si des pièces manquent ou sont endommagées.

**NOTE D'ENTRETIEN:** Les conditions côtières peut causer une accumulation de minéraux et de résidus sur le luminaire. Nous recommandons aux clients qui résident dans les zones côtières de nettoyer toutes les surfaces externes du luminaire une fois toutes les deux semaines avec un chiffon humide.

## HARDWARE

A



Wire Connector  
Qty:3PCS+1Extra

B



Mounting Screw  
Qty:1Extra

C



Allen Wrench  
Qty:1PC

D



Allen Screw  
Qty:2Extra

E



Anchor Screw  
Qty:2PCS+1Extra

F



Plastic Anchor  
Qty:2PCS+1Extra

ModernForms.com  
Phone (866) 810-6615  
Fax (800) 526-2585

Headquarters, East Manufacturing Facility  
44 Harbor Park Drive  
Port Washington, NY 11050

South East Manufacturing Facility  
1600 Distribution Ct  
Lithia Springs, GA 30122

Central Manufacturing Facility  
1700 South J Elmer Freeway, Ste 100  
Cedar Hill, TX 75104

West Manufacturing Facility  
1750 S Archibald Ave  
Ontario, CA 91761

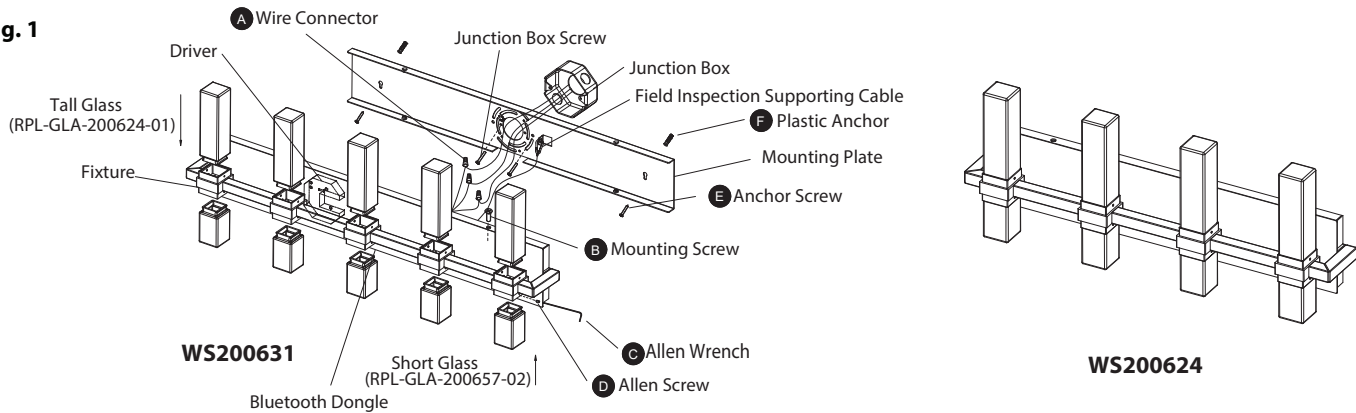
# INSTALLATION INSTRUCTIONS

## 2006-LED WALL SCONCE

### WS200631/WS200624

MODERN FORMS®

**Fig. 1**



#### PREPARATION

1. Shut off the power at the circuit breaker and remove existing fixture, including the crossbar.
2. Carefully unpack your new fixture and lay out all the parts on a clear area. Be careful not to lose any small parts necessary for installation.

Note: When installing or inspecting the circuit, please remove all removable accessories (such as lampshades, crystal ornaments, etc.).

#### MOUNTING THE FIXTURE (Fig. 1)

3. Remove the mounting screw (B) from the fixture.
4. Drill holes in the wall aligned with the key holes located in the mounting plate, insert the plastic anchor (F).
5. Secure the mounting plate to the junction box using the junction box screws. Fasten it to the wall using anchor screw (E) onto the plastic anchor.

Note: (i) It is recommended to use only original junction box screws or replacements provided by junction box manufacturer.

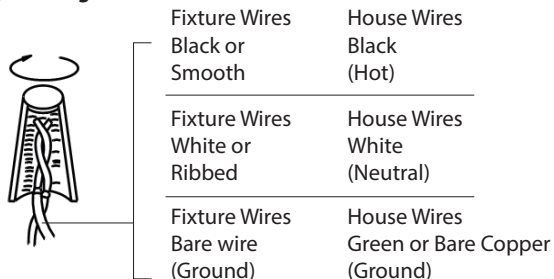
(ii) The side of the mounting plate marked "GND" must face out, towards the installer.

6. Hook the field inspection supporting cable to the mounting plate. This aids in wiring.

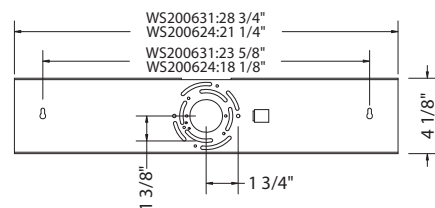
#### CONNECTING THE WIRES (Fig. 2)

7. Connect the driver output wires with junction box wires as shown in Fig.2, making sure that all wire connectors (A) are secured. If your outlet box has a green or bare copper ground wire, connect the fixture's ground wire to it. After wires are connected, tuck them carefully inside the junction box.
8. Secure the fixture to the mounting plate using the mounting screws (B).
9. Finally, install all glass components onto the fixture and use an allen wrench (C) to tighten the allen screws (D) to secure them.

**Fig. 2 Wiring**



**Mounting Plate Dimensions**



ModernForms.com  
Phone (866) 810-6615  
Fax (800) 526-2585

Headquarters, East Manufacturing Facility  
44 Harbor Park Drive  
Port Washington, NY 11050

South East Manufacturing Facility  
1600 Distribution Ct  
Lithia Springs, GA 30122

Central Manufacturing Facility  
1700 South J Elmer Freeway, Ste 100  
Cedar Hill, TX 75104

West Manufacturing Facility  
1750 S Archibald Ave  
Ontario, CA 91761

本页仅用于版本控制，请勿印刷！

THIS PAGE IS FOR VERSION CONTROL ONLY, PLEASE DO NOT PRINT !

序号 REV NO.	变更说明 REVISION NTOE	变更人 CHANGED BY	变更日期 REV DATE
1			
2			
3			
4			
5			