

# INSTALLATION INSTRUCTIONS

## 2006-LED Pendant

PD200657

MODERN FORMS®

**CAUTION:** To prevent electrical shock, ensure electricity has been turned off at the circuit breaker before beginning.

- Read all instructions before installing.
- System is intended for installation by a licensed electrician in accordance with the National Electrical Code (NEC) and local regulations.
- When handling the fixture, do not apply pressure to the LEDs. Hold the fixture by the base only.
- Retain installation instructions for future maintenance reference.

**WARNING:** All parts must be used as indicated in these instructions. This product is designed for use only with the supplied parts and/or accessories designated for use by Modern Forms. Substitution of parts or accessories not designated for use with this product by Modern Forms could result in personal injury or property damage, and will void the warranty. Contact an authorized dealer or the manufacturer if any parts are damaged or missing.

**MAINTENANCE NOTE:** Coastal conditions may cause mineral and residue build-up on the fixture. We recommend that customers in coastal areas clean all external surfaces of the fixture once every two weeks with a wet cloth.

**MISE EN GARDE:** Pour éviter tout choc électrique, assurez-vous que le disjoncteur soit mis hors tension avant de commencer.

- Lisez toutes les instructions avant l'installation.
- Le système doit être installé par un électricien licencié conformément au code national de l'électricité (NEC), et également aux règlements locaux.
- Lors de la manipulation du luminaire, n'appuyez pas sur les LED. Tenez-le uniquement par la base.

**ATTENTION:** Toutes les pièces doivent être utilisées comme indiqué dans ces instructions. Ce produit est conçu pour être utilisé seulement avec les pièces et/ou accessoires fournis pour être utilisés avec les produits Modern Forms. Remplacer des pièces ou accessoires non conçus pour ce produit Modern Forms pourrait causer des dommages corporels ou matériels et pourrait également causer l'annulation de la garantie. Veuillez contacter un revendeur autorisé ou le fabricant si des pièces manquent ou sont endommagées.

**NOTE D'ENTRETIEN:** Les conditions côtières peut causer une accumulation de minéraux et de résidus sur le luminaire. Nous recommandons aux clients qui résident dans les zones côtières de nettoyer toutes les surfaces externes du luminaire une fois toutes les deux semaines avec un chiffon humide.

### HARDWARE

A



Wire Connector P3  
Qty:3PCS+1Extra

B



Wire Connector P1  
Qty:3PCS+1Extra

C



Mounting Screw  
Qty:1Extra

D



Anchor Screw  
Qty:2PCS+1Extra

E



Plastic Anchor  
Qty:2PCS+1Extra

F



Adapter  
Qty:2PCS

G



Allen Wrench  
Qty:1PC

H



Allen Screw  
Qty:2 Extra

ModernForms.com  
Phone (866) 810-6615  
Fax (800) 526-2585

Headquarters, East Manufacturing Facility  
44 Harbor Park Drive  
Port Washington, NY 11050

South East Manufacturing Facility  
1600 Distribution Ct  
Lithia Springs, GA 30122

Central Manufacturing Facility  
1700 South J Elmer Freeway, Ste 100  
Cedar Hill, TX 75104

West Manufacturing Facility  
1750 S Archibald Ave  
Ontario, CA 91761

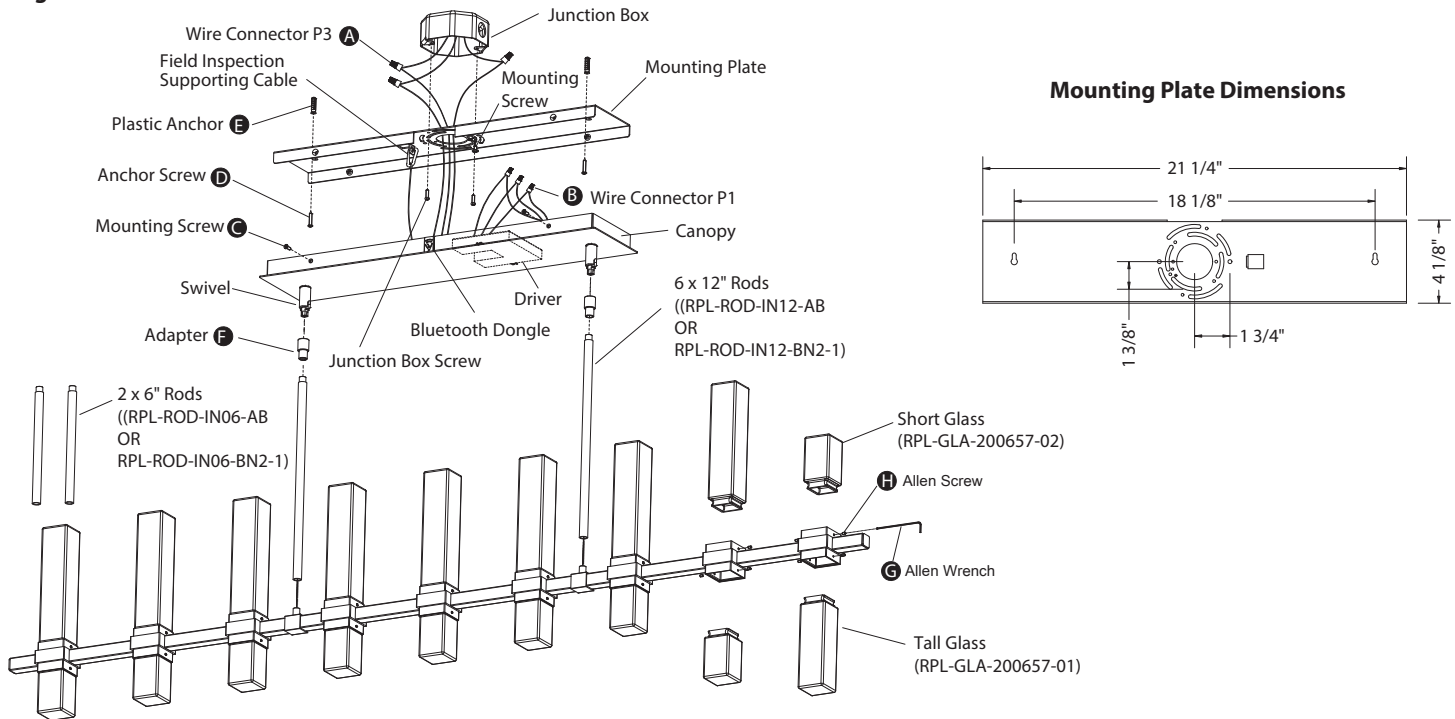
# INSTALLATION INSTRUCTIONS

## 2006-LED Pendant

### PD200657

MODERN FORMS®

Fig.1



### PREPARATION

1. Shut off the power at the circuit breaker and remove existing fixture, including the crossbar.
2. Carefully unpack your new fixture and lay out all the parts on a clear area. Be careful not to lose any small parts necessary for installation.  
Note: When installing or inspecting the circuit, please remove all detachable accessories (such as lampshades, crystal ornaments, etc.).

### MOUNTING THE FIXTURE (Fig. 1)

3. Remove the mounting screw (C) and mounting plate from the fixture.
4. Drill holes in the wall aligned with the key holes located in the mounting plate, insert the plastic anchor (E).
5. Secure the mounting plate to the junction box using standard junction box screws that come with the junction box. Fasten it to the wall using anchor screw (D).

Note: (i) Using any other non-original-manufacturer provided junction box screw may result in safety issue;

(ii) The side of the mounting plate marked "GND" must face out.

6. Choose the number of the rods suitable for your application. Thread the fixture wire through the rods, adapter (F), swivel and canopy. Connect the fixture, rods, adapter (F) and swivel. Make sure all are tightened.  
Note: When connecting the Adapter (F), first attach it to the rod, then attach it to the swivel.
7. Hook field inspection supporting cable to the mounting plate. The aids in wiring.

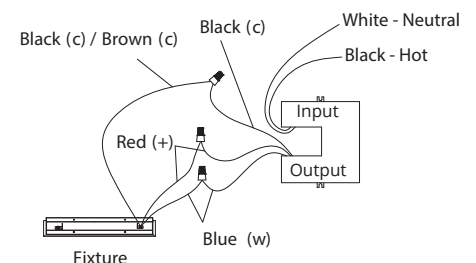
### CONNECTING THE WIRES (Fig. 2, Fig. 3)

8. Connect the fixture's wires with driver's output wires using wire connector P1 (B) as shown in Fig. 3. Connect the driver's input wires to junction box wires using wire connector P3 (A) as shown in Fig. 2, making sure that all wire connectors are secured. If your outlet box has a green or bare copper grounding wire, connect the fixture's grounding wire to it. Otherwise, connect the fixture's grounding wire directly to the mounting plate using the grounding screw provided. After wires are connected, tuck them carefully inside the junction box.
9. Secure the fixture to the mounting plate using the mounting screws (C).
10. Secure the glass with allen screw (H) using allen wrench (G).

Fig.2 Wiring

Fixture Wires Black or Smooth	House Wires Black (Hot)
Fixture Wires White or Ribbed	House Wires White (Neutral)
Fixture Wires Bare wire (Ground)	House Wires Green or Bare Copper (Ground)

Fig.3 Driver Wiring



ModernForms.com  
Phone (866) 810-6615  
Fax (800) 526-2585

Headquarters, East Manufacturing Facility  
44 Harbor Park Drive  
Port Washington, NY 11050

South East Manufacturing Facility  
1600 Distribution Ct  
Lithia Springs, GA 30122

Central Manufacturing Facility  
1700 South J Elmer Freeway, Ste 100  
Cedar Hill, TX 75104

West Manufacturing Facility  
1750 S Archibald Ave  
Ontario, CA 91761