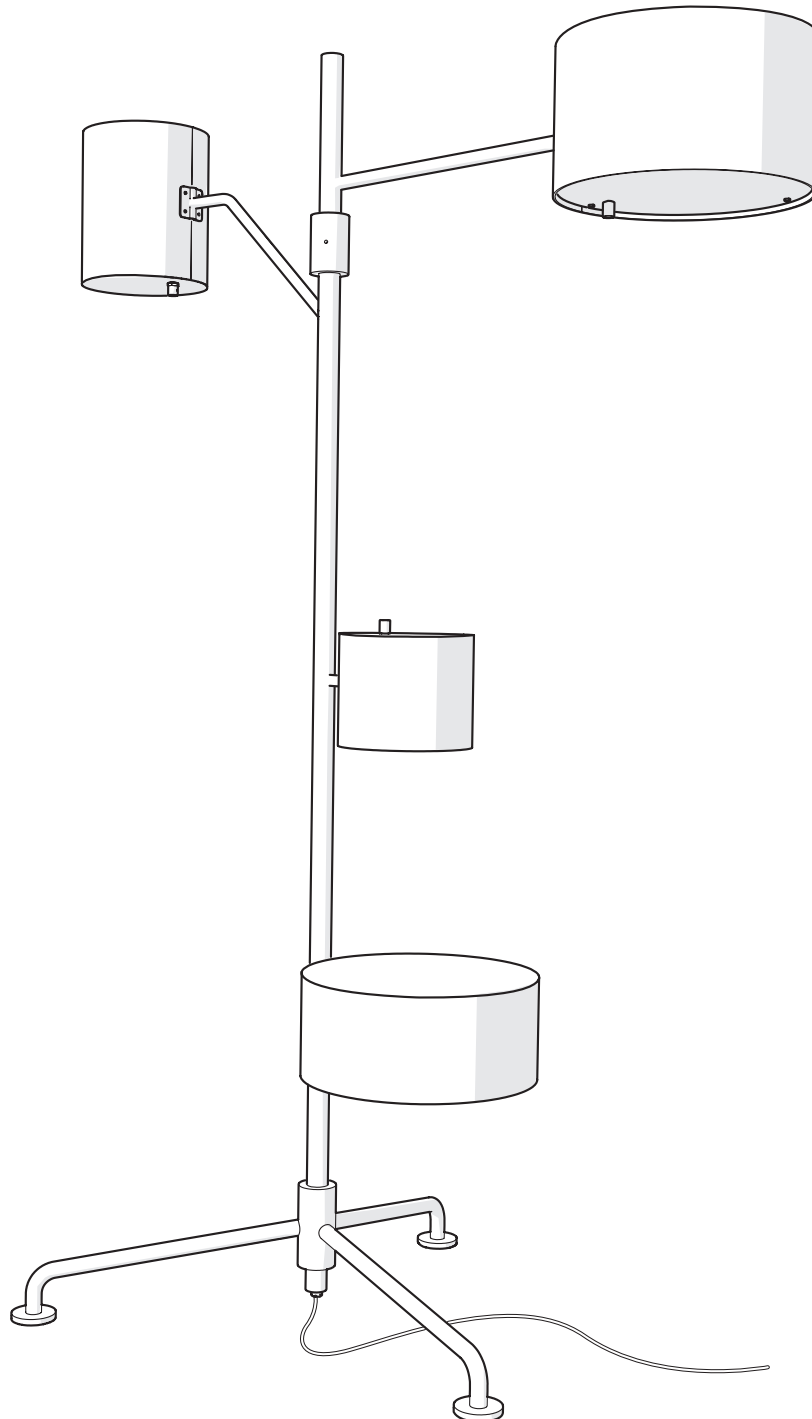


# m o o o i<sup>®</sup>

## Statistocrat Floor Lamp



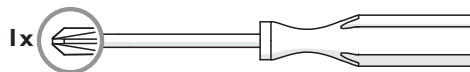
visit [www.mooodi.com](http://www.mooodi.com) for more information about the collection

# m o o o i<sup>®</sup>

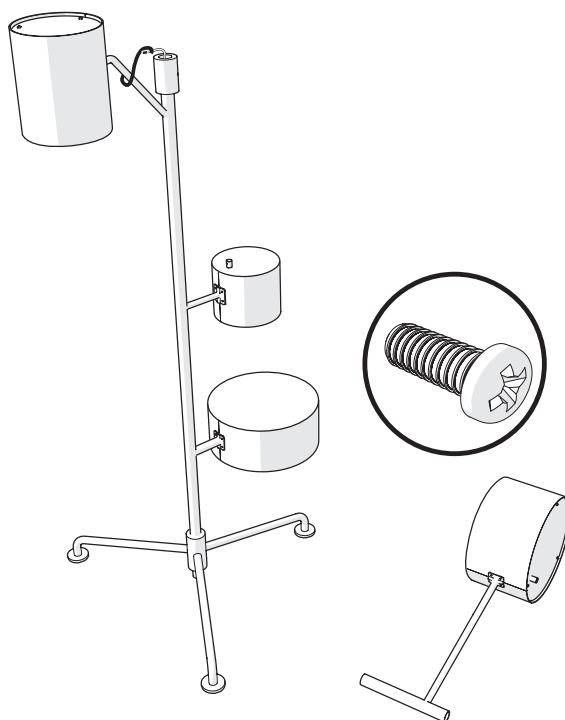
## Statistocrat Floor Lamp

1

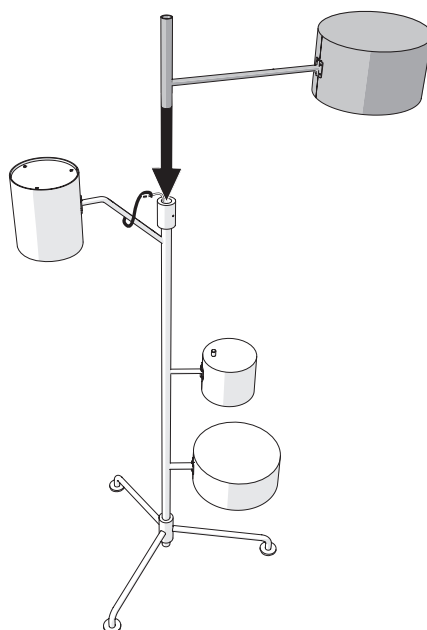
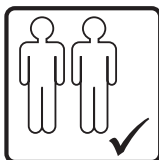
NOT INCLUDED



2



3

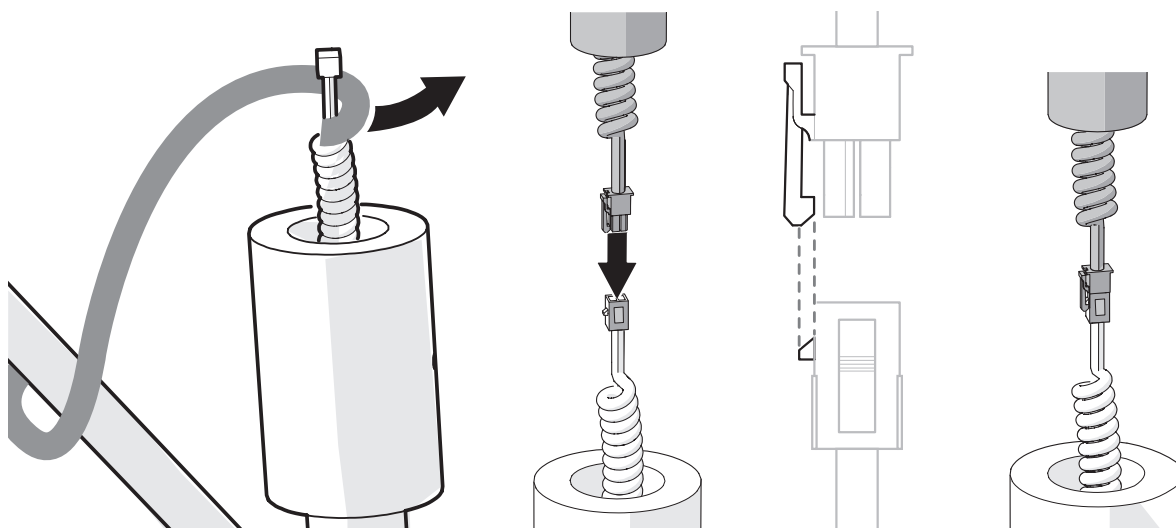


visit [www.mooodi.com](http://www.mooodi.com) for more information about the collection

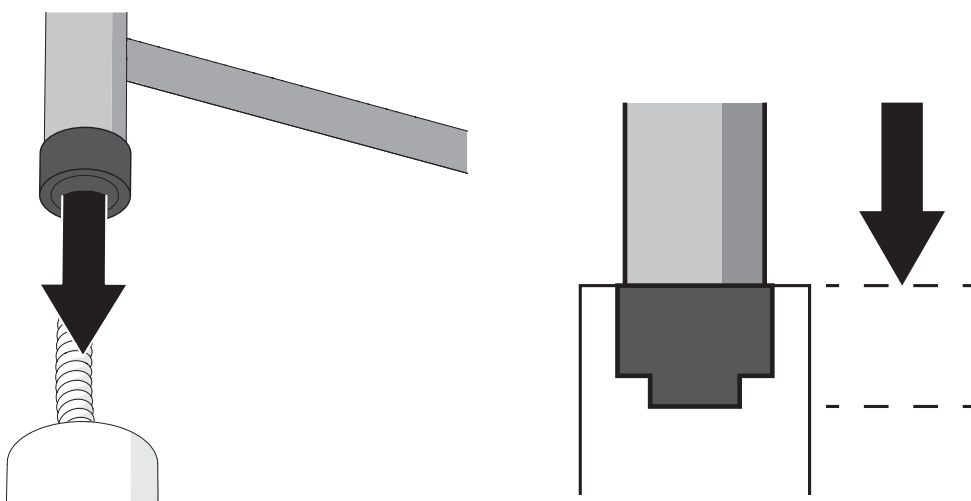
# m o o o i<sup>®</sup>

## Statistocrat Floor Lamp

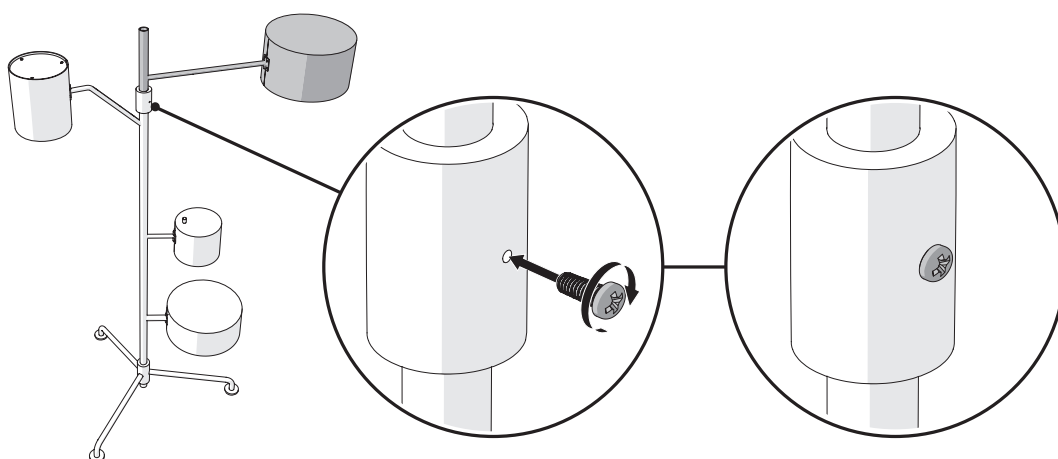
4



5



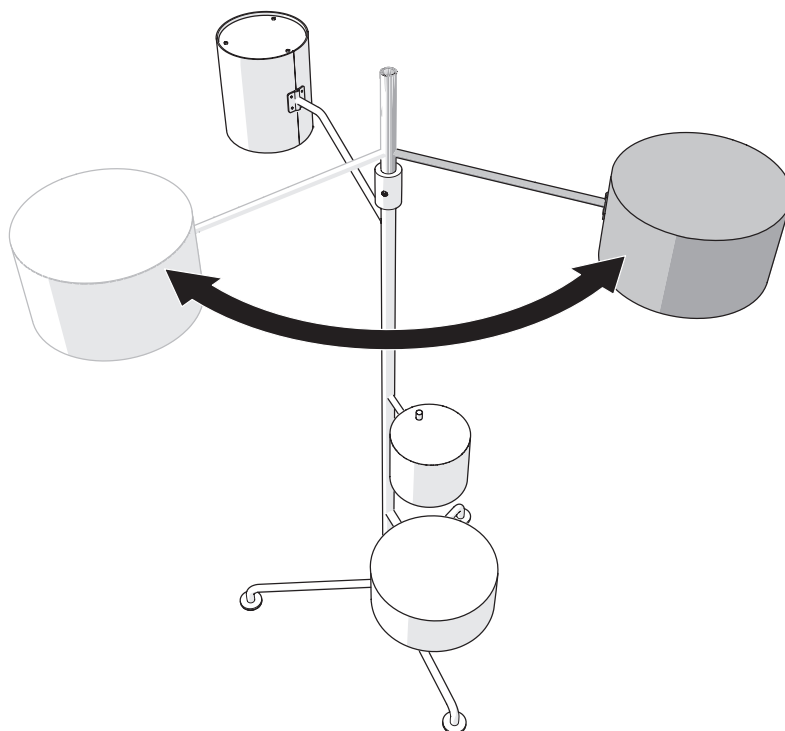
6



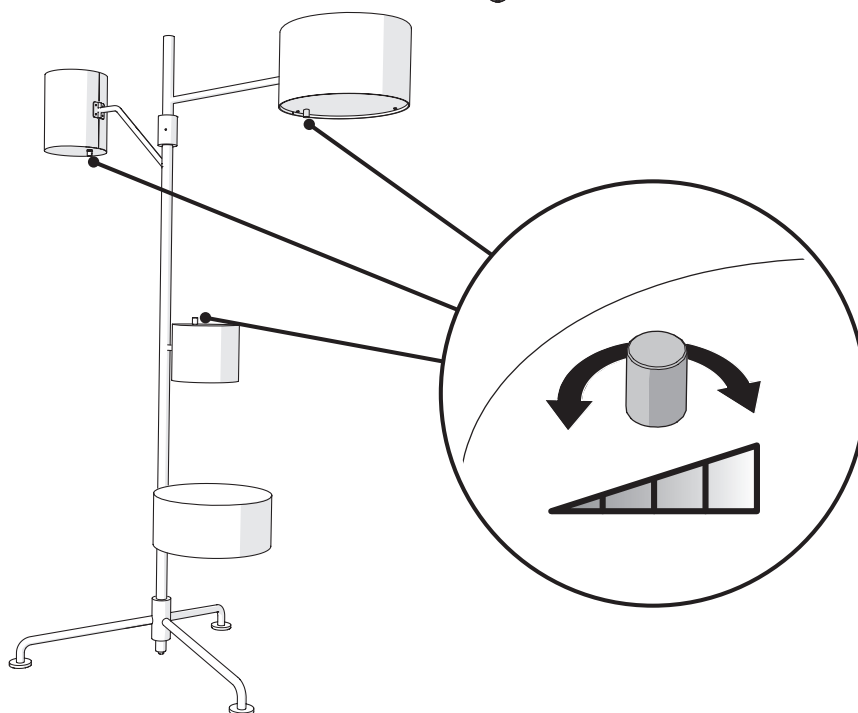
# m o o o i<sup>®</sup>

## Statistocrat Floor Lamp

7



8



### IMPORTANT SAFETY INSTRUCTIONS

This portable luminaire has a polarized plug (one blade is wider than the other) as a feature to reduce the risk of electric shock. This plug will fit in a polarized outlet only one way. If the plug does not fully fit in the outlet, reverse the plug. If it still does not fit, contact a qualified electrician. Never use an extension cord plug unless the plug can be fully inserted. Do not alter the plug in any way.



### CONSIGNES DE SECURITE IMPORTANTES

Cette lampe portable possède une prise polarisée (une lame est plus large que l'autre) afin de réduire le risque de choc électrique. Cette prise ne rentrera dans un socle polarisé que dans un sens. Si la prise ne rentre pas complètement dans le socle, inverser la prise. Si elle ne rentre toujours pas, contacter un électricien qualifié. Ne jamais utiliser une rallonge si la prise ne peut être entièrement insérée. Ne jamais modifier la prise en aucune façon.

visit [www.mooui.com](http://www.mooui.com) for more information about the collection