

# MERCANA

## Symona Travertine and Mango Wood Rectangle Coffee Table SKU: 70880-AB



### MATERIALS

The rounded rectangular tabletop is carved from a thick slab of travertine stone, supported by two wide and solid mango wood legs. Travertine and wood are naturally occurring materials. Please allow for variations in color, patterning, veining and grain.



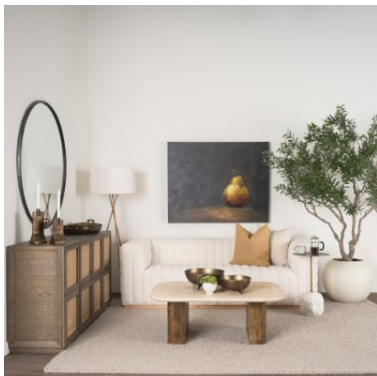
### ORGANIC ALLURE

The unique veining and organic allure of travertine offers captivating visual texture while making it a striking focal point.



### ARTFUL FINISH

The artful filling of the stone's pores with resin enhances the durability while maintaining the stone's natural charm.



### SOME ASSEMBLY REQUIRED

Symona is an earthy rectangular travertine stone coffee table with rounded edges supported by two wide mango wood pedestal



### AVAILABLE IN

1 Color

1 Size



Explore Online

# MERCANA

## Symona Travertine and Mango Wood Rectangle Coffee Table SKU: 70880-AB

| FEATURES & SPECIFICATIONS           |                     |
|-------------------------------------|---------------------|
| Glossy Finish (Y/N)                 | No                  |
| Wheels/Casters - Lock (Y/N)         | No, No              |
| Base CoverRight Coating (Y/N)       | No                  |
| Hand Made (Y/N)                     | Yes                 |
| Hand Painted (Y/N)                  | No                  |
| Surface Test                        | Marble Surface Test |
| Top Scratch Resistant (Y/N)         | No                  |
| Standard Stain Resistant (Y/N)      | Yes                 |
| Base Scratch Resistant (Y/N)        | No                  |
| Top Water Resistant (Y/N)           | Yes                 |
| Base Water Resistant (Y/N)          | No                  |
| Top Stain Resistant (Y/N)           | Yes                 |
| Base Stain Resistant (Y/N)          | No                  |
| Console/ Table Fire Resistant (Y/N) | No                  |
| Fire Resistant (Y/N)                | No                  |
| Finished Back                       | Yes                 |
| Kiln Dried (Y/N)                    | Yes                 |
| Purposeful Distressing Type         | No Distressing      |
| Upholstered?                        | No                  |
| Decal/Laminate Design               | Does Not Apply      |
| Shagreen-embossed Exterior          | No                  |
| File Drawer Included (Y/N)          | No                  |
| Trunk Storage?                      | No                  |
| Stools Included?                    | No                  |
| Lift Top?                           | No                  |
| Extendable?                         | No                  |
| Tray Top?                           | No                  |
| Number of Steps Required            | 0                   |
| Shelving                            | No                  |
| Fixed Shelf Quantity                | 0                   |
| Removeable Shelf Quantity           | 0                   |
| Drawers Included?                   | No                  |
| Drawer Dividers (Y/N)               | No                  |
| Drawer Safety Stop?                 | No                  |
| Felt Lined Drawers                  | No                  |

| MATERIALS & FINISHES                  |  |
|---------------------------------------|--|
| Natural Variation Type                | No Natural Variation                     |
| Upholstery Material Performance Brand | Does Not Apply                           |
| Upholstery Material Texture           | Does Not Apply                           |
| Top Material                          | Marble                                   |
| Base Material                         | Solid Wood                               |
| Base Material Type                    | Solid Wood                               |
| Main Material                         | Solid Wood                               |
| Color                                 | Brown                                    |
| Manufactured Wood Type                | MDF                                      |
| Gloss Finish?                         | No                                       |
| Material Details                      | Marble                                   |
| Material Code - Top                   | M0217-STN                                |
| Wayfair Top Color                     | Beige                                    |
| Top Finish Application Description    | Matte                                    |
| Top Texture Description               | Polished                                 |
| Top Material Details                  | Travertine Stone                         |
| Top Stone Type                        | Travertine Marble                        |
| Top Natural Variation                 | Natural Marble Color & Texture Variation |
| Material Code - Body                  | M0039-A                                  |
| Body Color                            | Brown                                    |
| Body Finish Texture                   | Plain/Smooth                             |

| ASSEMBLY REQUIREMENT          |                      |
|-------------------------------|----------------------|
| # of Hardware Pieces Included | 19                   |
| # of Parts/Components         | 2                    |
| Assembly Required?            | Yes                  |
| Removeable Legs (Y/N)         | Yes, Yes             |
| Suggested Number of People    | 2                    |
| Estimated Time to Assemble    | 20 min               |
| Additional tools needed (Y/N) | No                   |
| Avoid Power Tools?            | Yes                  |
| Level of Assembly             | Full Assembly Needed |