

RAIL I Bath Vanity

52100 / 52102 / 52103 / 52104 / 52105 / 52132

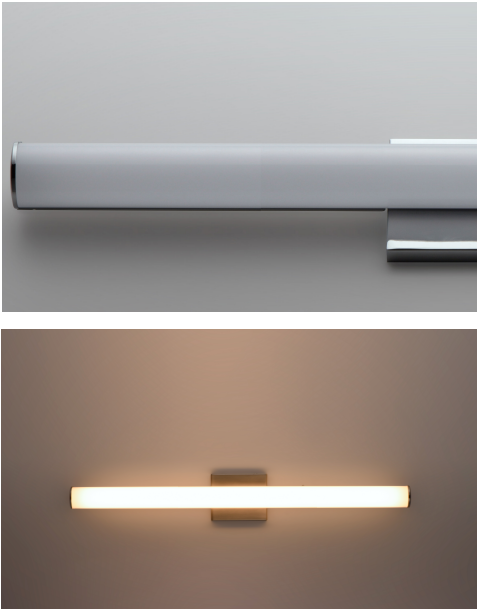
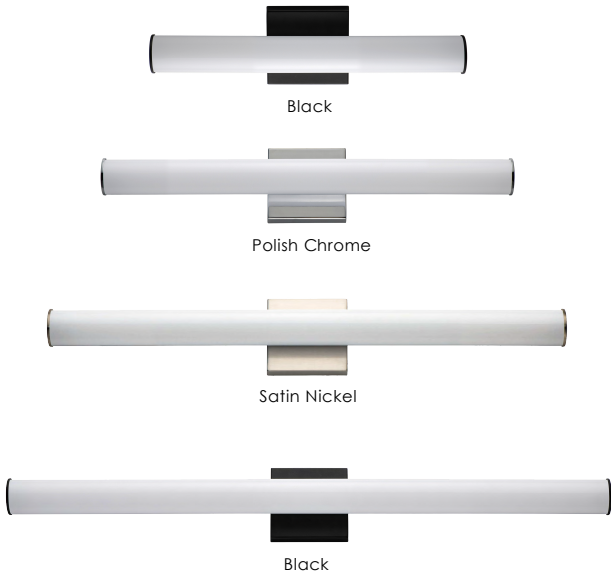
- ETL, cETL IP65
- Suitable for damp locations
- CRI 90+
- Dimmable with Triac Dimmer
- Energy Star
- Title 24 JA8 Compliant

Job Name : _____

Job Type : _____

Quantity : _____

Comments : _____



PRODUCT DESCRIPTION

Tubular shaped White acrylic diffusers mount to frames of Polished Chrome, Satin Nickel, or Black. Powered by 3000K LED these fixtures work well in a variety of contract applications.

- Always consult a qualified electrician before installing any lighting product
- Installation Requirements:
Ceiling fan attaches to electrical junction box securely anchored and capable of withstanding at least 35 lbs

FINISHES OPTIONS:

- Black (BK)
- Polished Chrome (PC)
- Satin Nickel (SN)

MATERIAL:

Aluminum, Acrylic

AVAILABLE SIZES:

18" | 24" | 30" | 36" | 48"

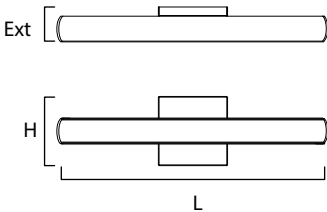
RATINGS:

ETL cETL IP65
Damp Location
Energy Star
Title 24
JA8 Compliant
ADA
Dimmable



ADDITIONAL:

RATED LIFE : 50,000 hours INSTALL UP/
DOWN: Both
OPERATING TEMPERATURE: -20°C (-4°F),
40°C (104°F)



MODEL	DIMENSION	BULB TYPE	CRI	LUMENS INIT DEL	COL TEMP.	DIMMABLE	INPUT
52100	18"W x 4.75"H x 2.5"Ext.	12W LED (Integrated)	90	1140 930	3000K	Triac Dimmer	120V
52102	24"W x 4.75"H x 2.5"Ext.	16W LED (Integrated)	90	1520 1400	3000K	Triac Dimmer	120V
52103	30"W x 4.75"H x 2.5"Ext.	20W LED (Integrated)	90	1900 1690	3000K	Triac Dimmer	120V
52104	36"W x 4.75"H x 2.5"Ext.	24W LED (Integrated)	90	2280 2040	3000K	Triac Dimmer	120V
52105	48"W x 4.75"H x 2.5"Ext.	32W LED (Integrated)	90	2480 2240	3000K	Triac Dimmer	120V
52132	24"W x 4.75"H x 2.5"Ext.	16W LED (Integrated)	90	1600 1400	27/35/40K	27-35-40	120V



WESTERN DISTRIBUTION CENTER (HEADQUARTER)
253 NORTH VINELAND AVE | CITY OF INDUSTRY, CA 91746

EASTERN DISTRIBUTION CENTER
101 GARDNER PARK | PEACHTREE CITY, GA 30269

P. 626.956.4200 | F. 626.956.4225 | maximlighting.com