

Installation Instructions

NE-612LEDRC

Compact Dual Head LED Emergency Light with Remote Capability

READ PRIOR TO ATTEMPTING INSTALLATION
ALWAYS TURN OFF MAIN POWER BEFORE INSTALLATION
INSTALLATION SHOULD BE CARRIED OUT BY YOUR LOCAL ELECTRICIAN

⚠ WARNING - This equipment is intended to be installed only by qualified personnel. The installation must be made in accordance with the current edition to the National Electric Code and all applicable state and local building codes. The final installation must be approved by the appropriate qualified electrical/building inspector(s). Improper installation may result in a fire or electrical hazard. Be sure the electrical power to the circuit has been disconnected before installing this electrical system.

⚠ AVERTISSEMENT - Cet équipement est destiné à être installé uniquement par du personnel qualifié. L'installation doit être faite en conformité avec l'édition actuelle du Code national de l'électricité et toutes étatiques et locales codes du bâtiment applicables. L'installation finale doit être approuvée par l'inspecteur en électricité / bâtiment qualifié approprié(s). Une mauvaise installation peut entraîner un incendie ou un risque électrique. Soyez sûr de la puissance électrique vers le circuit a été coupée avant l'installation de ce système électrique.

IMPORTANT SAFEGUARDS READ AND FOLLOW ALL SAFETY INSTRUCTIONS

WHEN USING ELECTRICAL, BASIC SAFETY PRECAUTIONS SHOULD ALWAYS BE FOLLOWED INCLUDING THE FOLLOWING:

1. Disconnect power at fuse or circuit breaker before installing or servicing.
2. Do not use outdoors.
3. Do not mount in hazardous locations, or near gas or electric heaters.
4. Do not mount above 26' from floor.
5. Do not let power cords touch hot surface.
6. Equipment should be mounted in locations and at heights where it will not be subjected to tampering by unauthorized personnel.
7. The use of accessory equipment not recommend by the manufacturer may cause an unsafe condition.
8. Do not use this equipment for other than intended use.
9. All servicing should be performed by a qualified personnel only.
10. Allow battery to charge for 24 hours before first use, for 2 batteries model, need 48 hours fully charge batteries.

SAVE THESE INSTRUCTIONS

MAINTENANCE

Replace the batteries as needed according to ambient conditions. However, we recommend that the equipment be tested regularly in accordance with local codes.

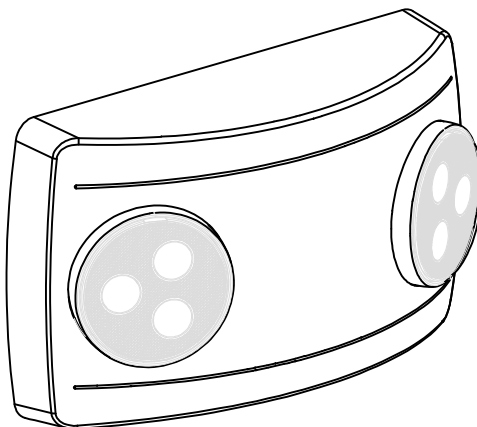
TEST BUTTON FUNCTION

Hold the test button: LED heads will turn on and the LED indicator will turn off. Release the test switch: LED indicator will turn on and the LED heads will turn off.

TROUBLESHOOTING GUIDE

If LED heads or LED indicator do not illuminate, check the following:

1. Check AC supply - verify that unit has 24 hours of AC voltage.
2. Unit is shorted or battery is not connected.
3. Battery discharge. Allow luminaire to recharge for 24 hours and then re-test.
4. Battery must recharge if luminaire has not been used for months.
5. If above troubleshooting do not solve your problem, contact factory for assistance.



Installation Instructions

NE-612LEDRC

Compact Dual Head LED Emergency Light with Remote Capability

READ PRIOR TO ATTEMPTING INSTALLATION
ALWAYS TURN OFF MAIN POWER BEFORE INSTALLATION
INSTALLATION SHOULD BE CARRIED OUT BY YOUR LOCAL ELECTRICIAN

INSTALLATION INSTRUCTIONS

WALL MOUNT - BACK POWER FEED

1. Insert flat head screwdriver into the slots on the bottom of luminaire to pry off front cover. (Figure 1)
2. Remove the appropriate knock out from back plate and mount the back plate to the junction box.
3. Remove the knockout located in the center of the back plate and feed the wires through the hole.
4. Secure the backplate to the junction box.
5. Connect the junction box wires to the power supply wires using the wire nuts (included). Connect the white wire to neutral. If using 120V, connect the black wire to the hot lead. If using 227V, connect the orange wire to the hot lead. Cap the unused lead and place all wires inside the luminaire. (see Wiring Diagram below)
6. Connect remote heads. (see page 3)
7. Connect the male battery connector to female connector on the PCBA. (Figure 2)
8. Snap the front cover onto the back plate.
9. Restore power, press the test button and wait for the LED heads to turn on.
10. Adjust the heads towards the desired direction. (Figure 5)

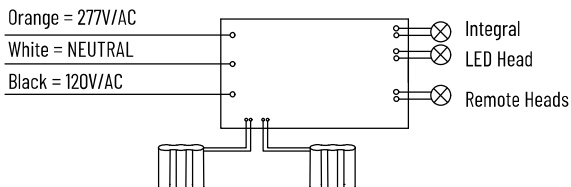
WALL MOUNT - TOP POWER FEED

1. Open front cover and remove top knockout on the top flange of the fixture.
2. Secure conduit (or surface raceway) to knockout and feed wires.
3. Remove keyhole knockout on back plate and mount to wall.
4. Refer to steps 5-10 in Wall Mount - Back Power Feed (above).

CEILING MOUNT - TOP POWER FEED

1. Refer to Wall Mount - Back Power Feed instructions (above)
2. Difference between Back Power Feed and Top Power Feed: (Figure 4)
 1. Mount the back plate on the ceiling surface instead of the wall surface.
 2. Feed the building AC supply wire through the back plate then connect to the fixture power supply using the wire nuts (included).

WIRING DIAGRAM



If the fixture only has (1) battery pack, it does not have remote capabilities.
If the fixture has (2) battery packs, it has remote capabilities.

Figure 1

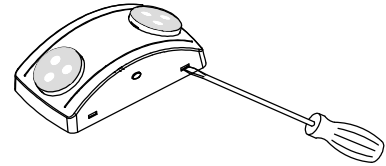


Figure 2

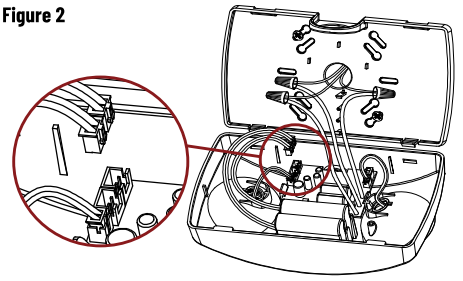


Figure 3

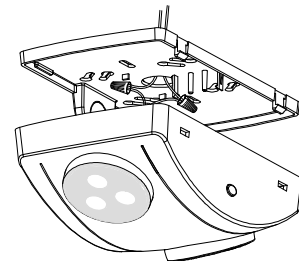


Figure 4

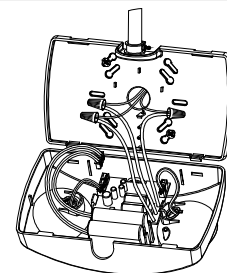
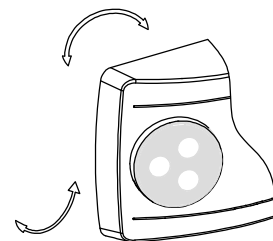


Figure 5



Installation Instructions

NE-612LEDRC

Compact Dual Head LED Emergency Light with Remote Capability

READ PRIOR TO ATTEMPTING INSTALLATION
ALWAYS TURN OFF MAIN POWER BEFORE INSTALLATION
INSTALLATION SHOULD BE CARRIED OUT BY YOUR LOCAL ELECTRICIAN

SELF-DIAGNOSTICS INSTRUCTIONS

- When AC power is supplied, the luminaire will automatically initiate self-test and self-diagnostic tests as follows:
 - Verifies battery disconnection, charger board failure every 5 seconds
 - 1 minute self-testing every month
 - 90 minute self-testing every 12 months after installation
- Dual color LED lamp indicator shows the following status:
 - Green color = ON / READY
= Blinking: Testing
 - Red color = Service Alert
 - Service Alert LED Code (Red color LED lamp indicator)

●	One blink, 4 second pause	Battery is not connected
●●	Two blinks, 4 second pause	Battery failure (discharge time shortage)
●●●	Three blinks, 4 second pause	Charger board circuit failure
●●●●	Four blinks, 4 second pause	Transfer function failure
●●●●●	Five blinks, 4 second pause	Integral LED head failure (for emergency operation)
●●●●●●	Six blinks, 4 second pause	Remote heads failure (for remote operation)

NOTE: After solving the fault of emergency equipment, please press test button for 2 seconds without releasing to reset. LED indicator will show green when complete.

- Self testing / self diagnostic also have manual test functionality, press test button as follows:

Press test button once	30 seconds discharge test
Press test button twice within 2 seconds	3 minutes discharge test
Press test button 3 times within 2 seconds	30 minutes discharge test
Press test button 4 times within 2 seconds	90 minutes discharge test

REMOTE HEAD INSTALLATION

- Remove ground male connector from the female connector on the PCBA. (Figure 1)
- Plug the remote male connector into the female connector. (Figure 2)
- Connect extended remote head wires to the remote wires using wire nut. Yellow is positive (+) and purple is negative (-).

Figure 1

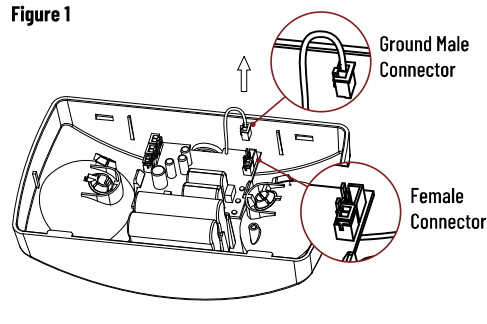


Figure 2

