

Kap Ø 80 Wall-Washer - Airtight IC Rated

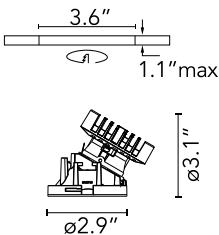
Designed by FLOS Architectural, 2016



Recessed luminaire with LED light source. Power supply not included. Diffusing lens included.

Are you a professional and your project needs consulting and support?

BOOK AN APPOINTMENT



Main specifications

Mounting	Ceiling recessed
Environments	Indoor dry location
Light Source Type	LED
LED type	LED array
Number of heads	1
Power (W)	8.7
Source flux (lm)	908
System flux (lm)	545
Efficacy (lm/W)	62

Physical

Color	Black
Trim	No
Orientation	Fixed
Net weight (lb)	0.53
Package volume (in)	62
IP internal	20
IP external	54

Download

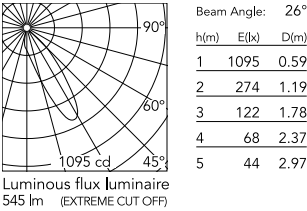
Family spec sheet [ZIP](#)
Mounting instructions [PDF](#)

Photometric Files

LDT / IES [ZIP](#)



Schematic light drawing



Photometric

Lighting type	Indirect, Direct
Light distribution	Asymmetric
CCT (K)	2700
CRI>	90
McAdam steps (SDCM)	3
LED Life / Failure Ratio	L80B50>50.000h (Tc=85°C)
Beam angle C0-180 (°)	26
Beam angle C90-270 (°)	27
UGR _L	19

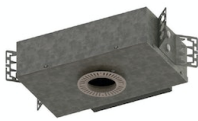
Electrical

Insulation class	III
Forward voltage (V)	17.8
LED current (mA)	500
Driver	Remote excluded

Notes

Diffusing lens included.

Accessories & Power Supply



REQUIRED
Housing and Hanger Bar
Installation

08.7059.00.90
Kap 80 Airtight Housing for New
construction



REQUIRED
Housing and Hanger Bar
Installation

HOUS-HB
1 male, 1 female hanger bar
Extendable from 14" to 24"
centers.