

Kap Ø 80 Adjustable Optic Flood - Airtight IC Rated

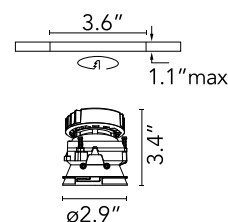
Designed by FLOS Architectural, 2017



Recessed luminaire with LED light source. Power supply not included. Diffusing lens included.

Are you a professional and your project needs consulting and support?

[BOOK AN APPOINTMENT](#)



Main specifications

Mounting	Ceiling recessed
Environments	Indoor dry location
Light Source Type	LED
LED type	LED array
Number of heads	1
Power (W)	9.2
Source flux (lm)	908
System flux (lm)	668
Efficacy (lm/W)	72

Physical

Color	Gold
Trim	No
Orientation	Adjustable
Rotation (°)	360
Longitudinal tilting (°)	20
Transversal tilting (°)	20
Net weight (lb)	0.53
Package volume (in)	62
IP internal	20
IP external	54

Download

[Family spec sheet](#) [ZIP](#)

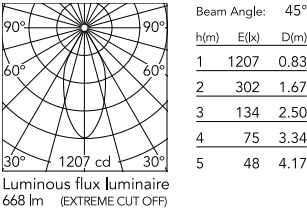
[Mounting instructions](#) [PDF](#)

Photometric Files

[LDT / IES](#) [ZIP](#)



Schematic light drawing



Photometric

Lighting type	Direct
Light distribution	Symmetric
CCT (K)	2700
CRI>	90
McAdam steps (SDCM)	3
LED Life / Failure Ratio	L80B50>50.000h (Tc=85°C)
Beam angle C0-180 (°)	45
Beam angle C90-270 (°)	45
UGR _L	14

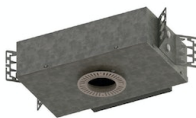
Electrical

Insulation class	III
Forward voltage (V)	18.2
LED current (mA)	500
Driver	Remote excluded

Notes

Diffusing lens included.

Accessories & Power Supply



REQUIRED
Housing and Hanger Bar
Installation

08.7059.00.90
Kap 80 Airtight Housing for New construction



REQUIRED
Housing and Hanger Bar
Installation

HOUS-HB
1 male, 1 female hanger bar
Extendable from 14" to 24" centers.