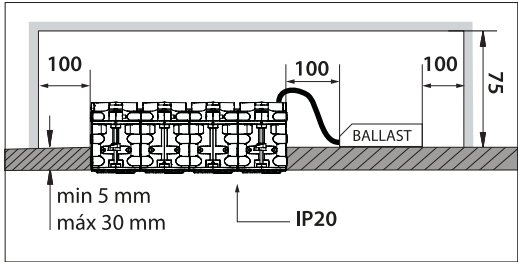






**A RECESSING DIMENSIONS**

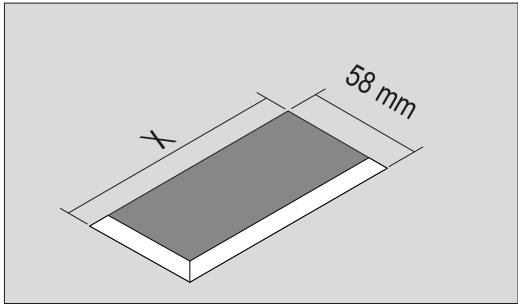
DIMENSIONES DE EMPOTRAMIENTO / DIMENSIONI / EINBAUABMESSUN-  
GEN / DIMENSIONS D'ENCASTREMENT / DIMENSOES DO LUMINARI /  
取り付けの寸法 / 嵌入の体积 / РАЗМЕРЫ ДЛЯ ВСТРАИВАНИЯ /  
ИМЕК ЖЕРЛЕРІНІҢ ӨЛШЕМДЕРІ / ابعاد التركيب الخاطفي



UL- Us & CANADA  
Maintenance clearance from insulation 3”on all side

**B LUMINAIRE INSTALLATION**

INSTALACIÓN DE LA LUMINARIA / INSTALLAZIONE DELLA LAMPADA /  
INSTALLATION DER BELEUCHTUNG / INSTALLATION DU LUMINAIRE /  
INSTALAÇÃO DO APARELHO DE ILUMINAÇÃO / 照明器具の設置・据付け /  
灯具的安装 / МОНТАЖ ОСВЕТИТЕЛЬНОГО ПРИБОРА /  
ШАМДАЛДЫ ОРНАТУ / تركيب وحدة الإنارة



LIGHTS	X =
1L	47 mm
2L (INT43)	91 mm
4L (INT43)	178 mm
2L (INT70)	117 mm
4L (INT70)	257 mm

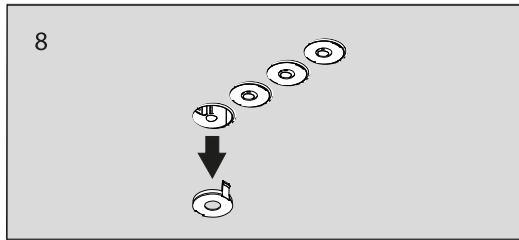
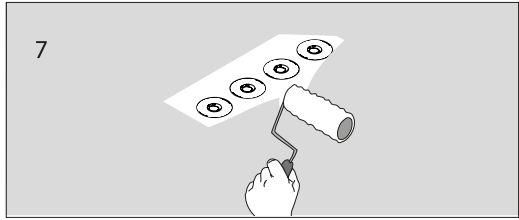
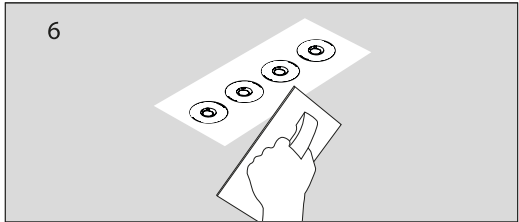
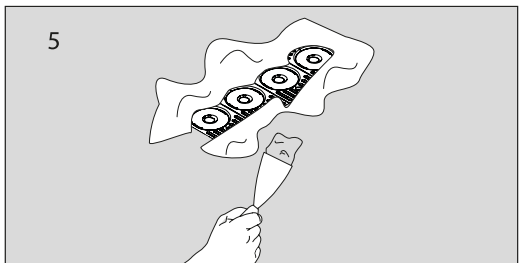
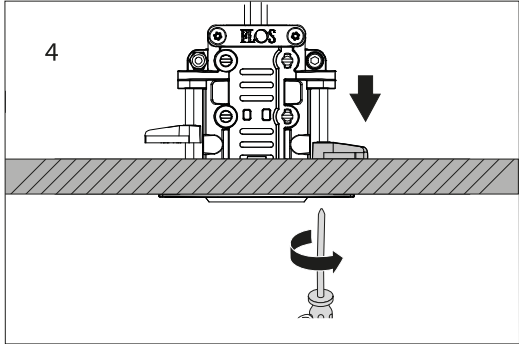
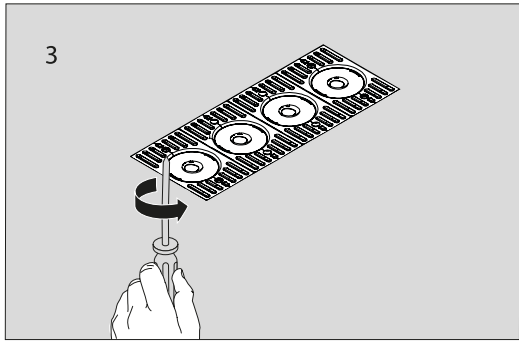
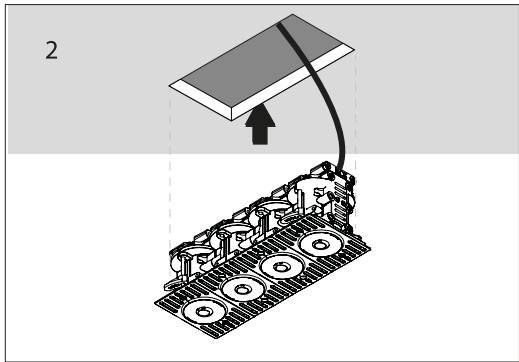
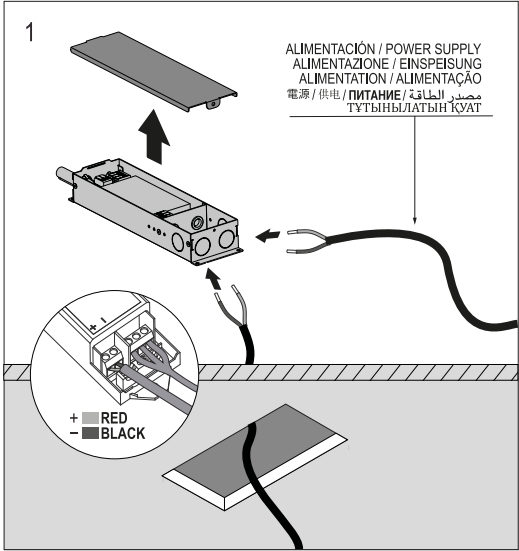
**UL listed driver Class 2, Remote location.**  
Controlador con certificación UL Clase 2,  
Ubicación remota.

**USE ONLY CLASS 2 POWER SUPPLY**

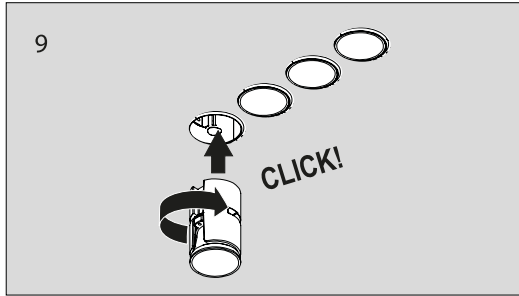
**LED DRIVER**  $\leq$  60 Vout

**ATTENTION**

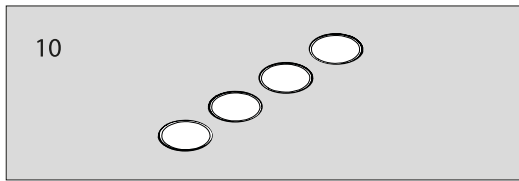
The voltage under load does not exceed 25 V r.m.s. or 60 V ripple-free d.c. and the no-load voltage does not exceed 35 V peak or 60 V ripple-free d.c.



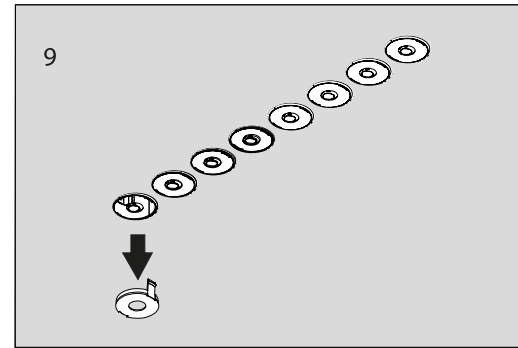
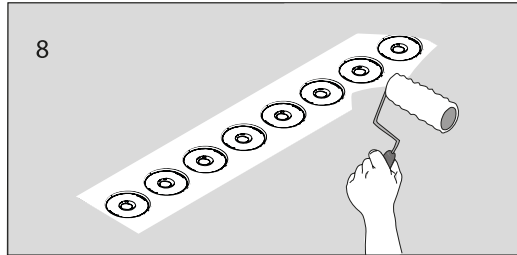
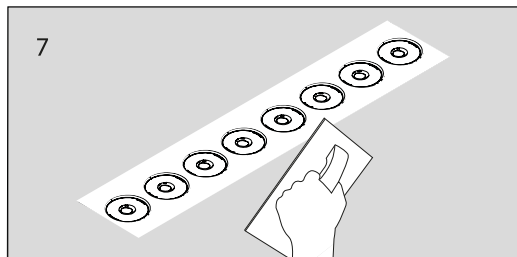
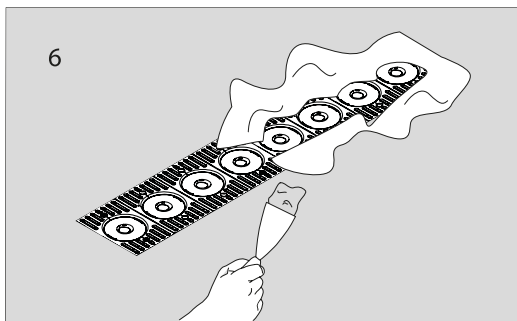
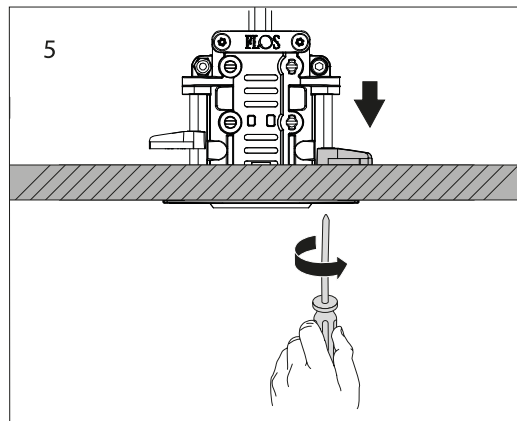
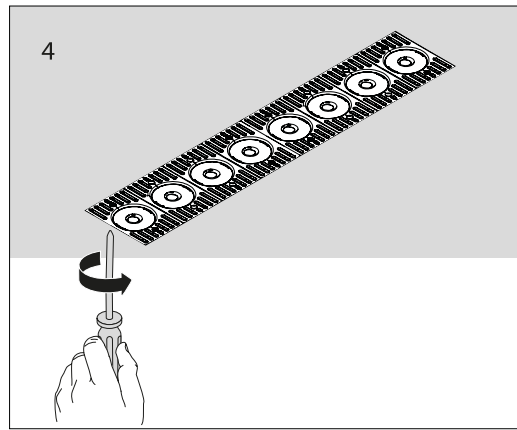
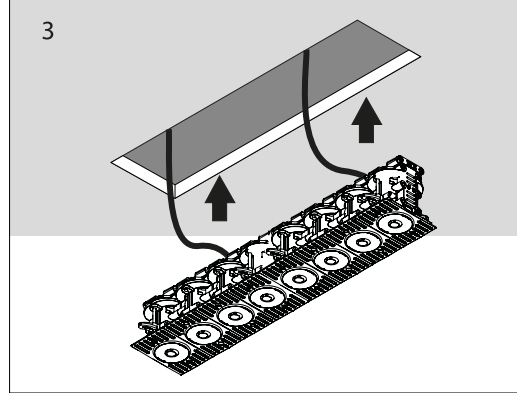
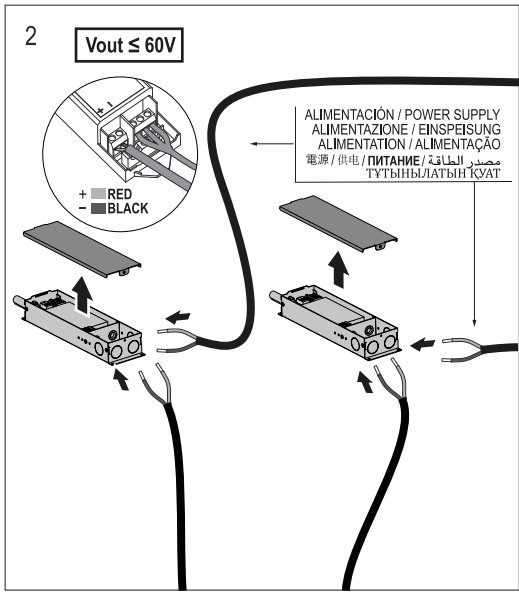
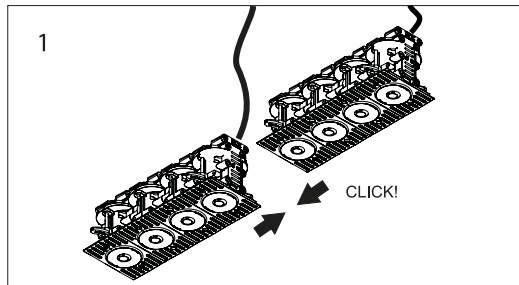
**Switch off before next step.**



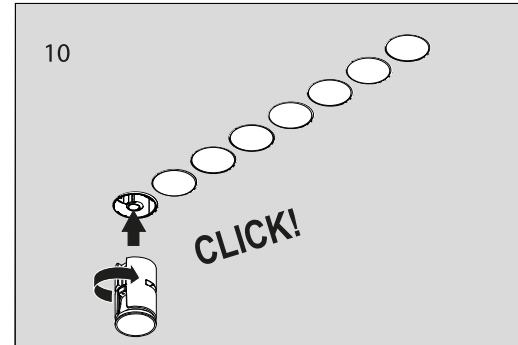
**Switch on.**



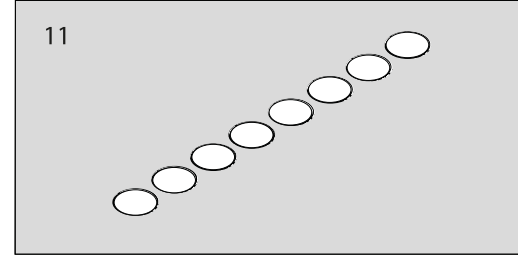
**JOINTS**



**Switch off before next step.**



**Switch on.**



**WARNING !**

DO NOT POWER THE MODULE WITHOUT THE  
LIGHT HEADS INSTALLED.

**DIMENSION CONVERSION TABLE**

mm	inch
5	0,19
30	1,18
47	1,85
58	2,28
75	2,95
91	3,58
100	3,93
117	4,6
178	7
25	10,11