

## Light Shadow Dots - Single Spot Module. Set of 4 Spots

Designed by FLOS Architectural, 2019

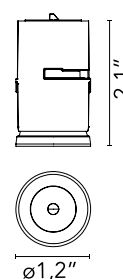


4 x 1.8W - 4 x 599lm - 2700K - CRI> 90 - Beam° 10

LED lighting module, with low glare, to be inserted in the recessed frames (not included), installation through a bayonet system with interchangeable spots. Available in one-light versions and groups of two and four lights. Driver not included, the driver has to be directly connected to the embedding frames.

Are you a professional and your project needs consulting and support?

BOOK AN APPOINTMENT



### Main specifications

Mounting	Recessed
Environments	Indoor dry location
Light Source Type	LED
LED type	Power LED
Number of heads	4
Power (W)	1.8
Source flux (lm)	270
System flux (lm)	599

### Physical

Color	Black
Orientation	Fixed
Net weight (lb)	0.43
Package height (in)	0.25
Package volume (in)	61.02
IP internal	20

### Download

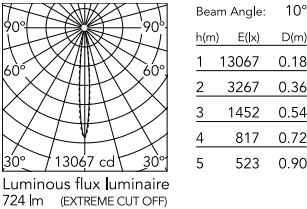
Family spec sheet [↓ ZIP](#)  
Mounting instructions [↓ PDF](#)

### Photometric Files

LDT / IES [↓ ZIP](#)



Schematic light drawing



Photometric

Lighting type	Direct
Light distribution	Symmetric
CCT (K)	2700
CRI>	90
LED Life / Failure Ratio	L80B50>50.000h (Tc=85°C)
Beam angle C0-180 (°)	10
Beam angle C90-270 (°)	11

Electrical

Insulation class	III
Forward voltage (V)	6
LED current (mA)	600
Driver	Remote

Accessories & Power Supply



REQUIRED  
Frame

08.0580.00.9S

Accessory Pre-installation frame,  
1L



REQUIRED  
Frame

08.0581.00.9S

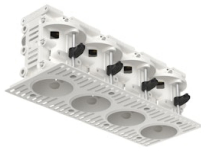
Accessory Pre-installation frame,  
2 Lights Space 43 mm - 1.69" on  
center



REQUIRED  
Frame

08.0583.00.9S

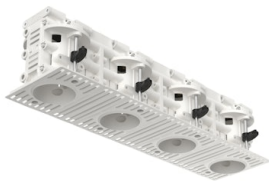
Accessory Pre-installation frame,  
2 Lights Space 70 mm - 2.76" on  
center



REQUIRED  
Frame

08.0582.00.9S

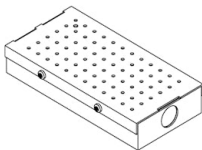
Accessory Pre-installation frame,  
4 Lights Space 43 mm - 1.69" on  
center



REQUIRED  
Frame

08.0584.00.9S

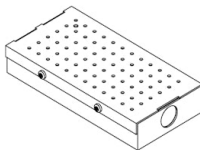
Accessory Pre-installation frame,  
4 Lights Space 70 mm - 2.76" on  
center



REQUIRED  
Power supply

SP40W600MA-10V-D01

Splice Box 7"x3-5/8"x1-1/4",  
600mA , 40W, 0-10V Dimmable,  
120-277V



REQUIRED  
Power supply

SP30W600MA-10V-D01

Splice Box 7"x3-5/8"x1-1/4",  
600mA , 30W, 0-10V Dimmable,  
120/277V



OPTIONAL  
Frame

Installation

08.0586.00

Accessory Pre-installation frame,  
70 mm - 2.76" spacer