

## SAFETY INFORMATION

Released Date: 2023-08-28

Please read and understand this entire manual before attempting to assemble, install or operate the product.

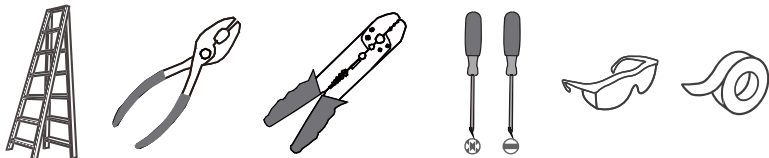
### WARNING

- RISK OF ELECTRIC SHOCK - Before beginning installation, turn off electricity at the circuit breaker box or the main fuse box.
- RISK OF FIRE - Use bulbs specified by the markings and/or labels on the fixture.

### CAUTION

- For your safety, read instructions completely before beginning installation.
- If in doubt about electrical installation, consult a licensed electrician.
- Turn off electricity to fixture before replacing the bulb(s).

### TOOLS REQUIRED

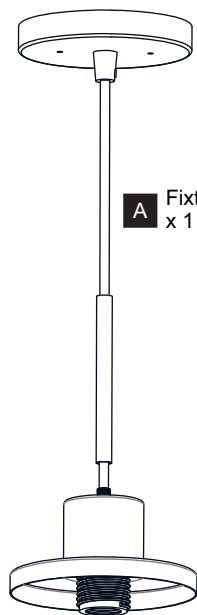


## CARE AND MAINTENANCE

- Wipe clean using soft, dry cloth or static duster. Always avoid using harsh chemicals and abrasives to clean fixture as they may damage the finish.

If you need further assistance call Quoizel Customer Care at 1-800-645-3184 (9:00am - 5:00pm EST), or visit us on-line at [www.quoizel.com](http://www.quoizel.com).

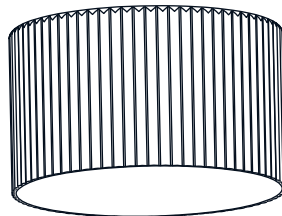
## PACKAGE CONTENTS



**A** Fixture Body  
x 1

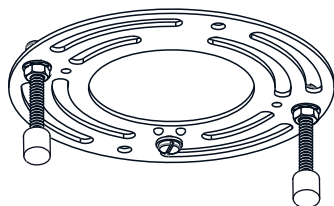


**B** Socket Collar  
[pre-assembled to  
Fixture Body]  
x 1



**C** Glass Shade  
x 1

## MOUNTING HARDWARE



**AA** Crossbar Assembly  
x 1



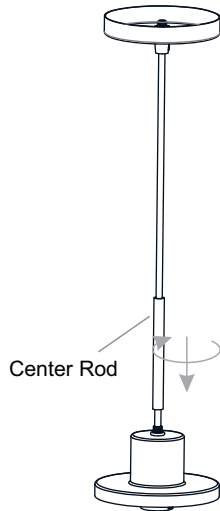
**BB** Wire Connector  
x 3



**CC** Outlet Box Screw  
x 2

## INSTALLATION

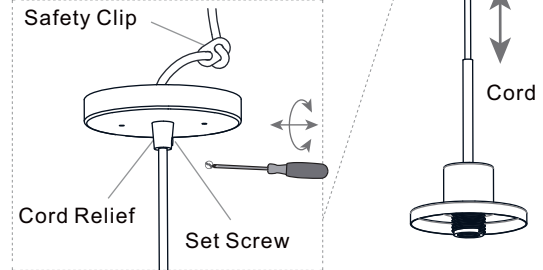
### 1 Install Center Rod



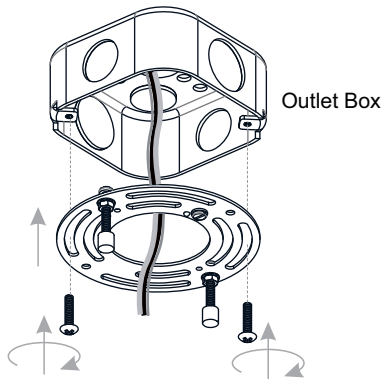
### 2 Adjust Cord Length:

Fixture Height Adjustable 13.75" to 98"

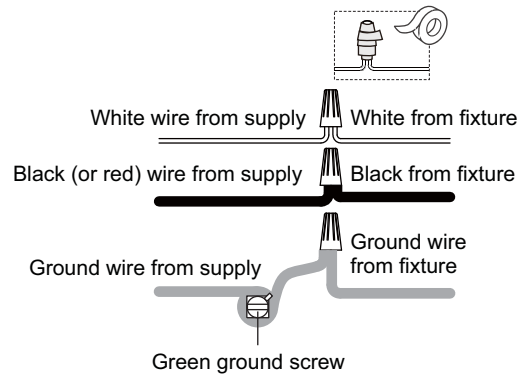
Unlock set screw on the cord relief and slide the safety clip to adjust the cord length according to desired hanging height. Always tighten the set screw after adjustment.



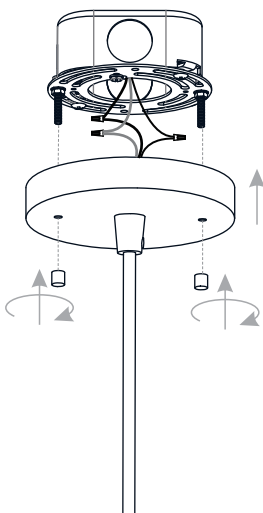
### 3 Install Crossbar Assembly



### 4 Wiring



### 5 Install Fixture Body




### 6 Install Glass Shade and Bulb



Install one correct bulb referring to fixture markings and/or labels for maximum wattage.

**Recommended Bulb type (not included):**

  
BULB BASE TYPE  
Medium (E26)

  
BULB TYPE  
TYPE A  
100W MAX

**Your installation is now complete! Restore electricity and save this sheet for future reference.**