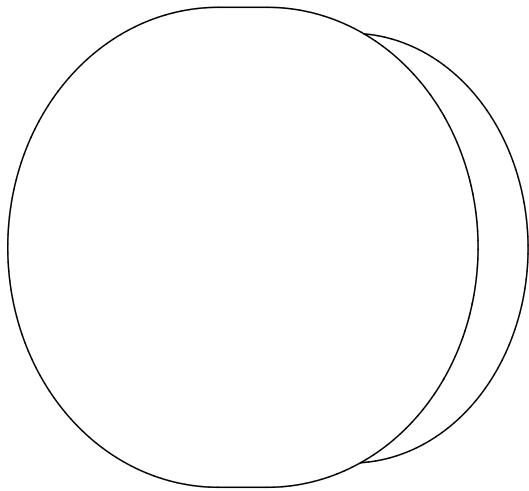




Pastille

12433 rA

Collar, Disc and
Wayfind
Low Voltage Input



CAUTION:

Before starting, turn off power
at main circuit panel.

ADVERTENCIA:

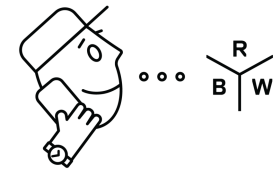
Antes de comenzar la instalación,
apague la corriente en el tablero
principal.

ATTENTION:

Coupez l'alimentation avant de
procéder à l'installation.



Calling for backup? Scan above
to contact our team.

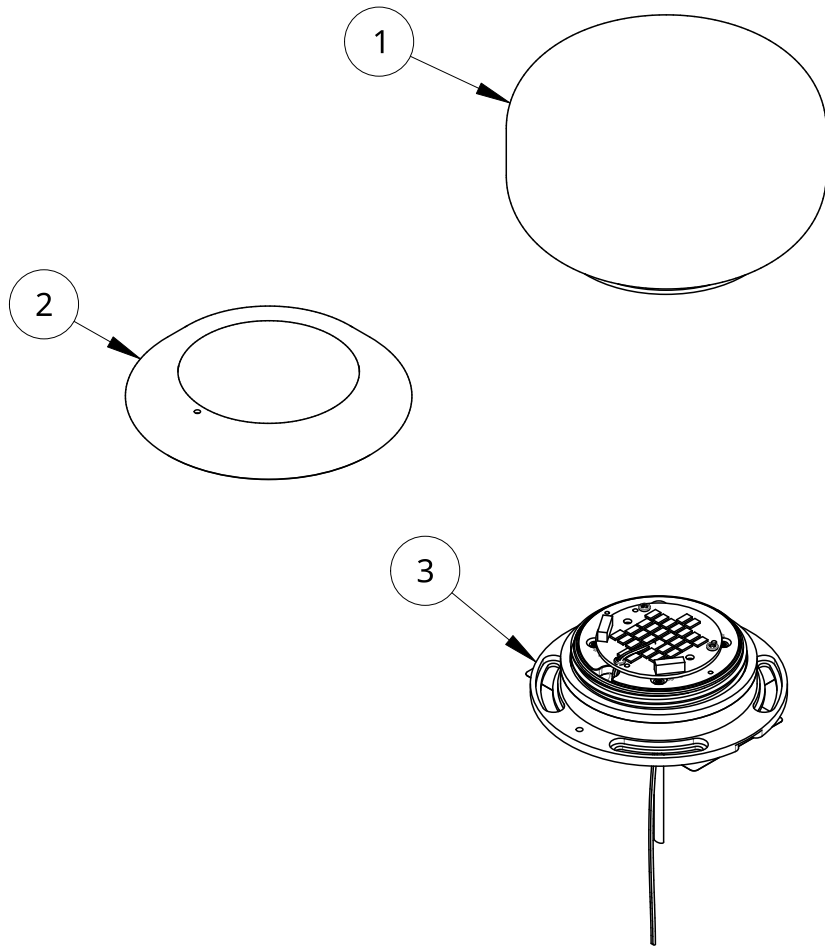


www.RBW.com

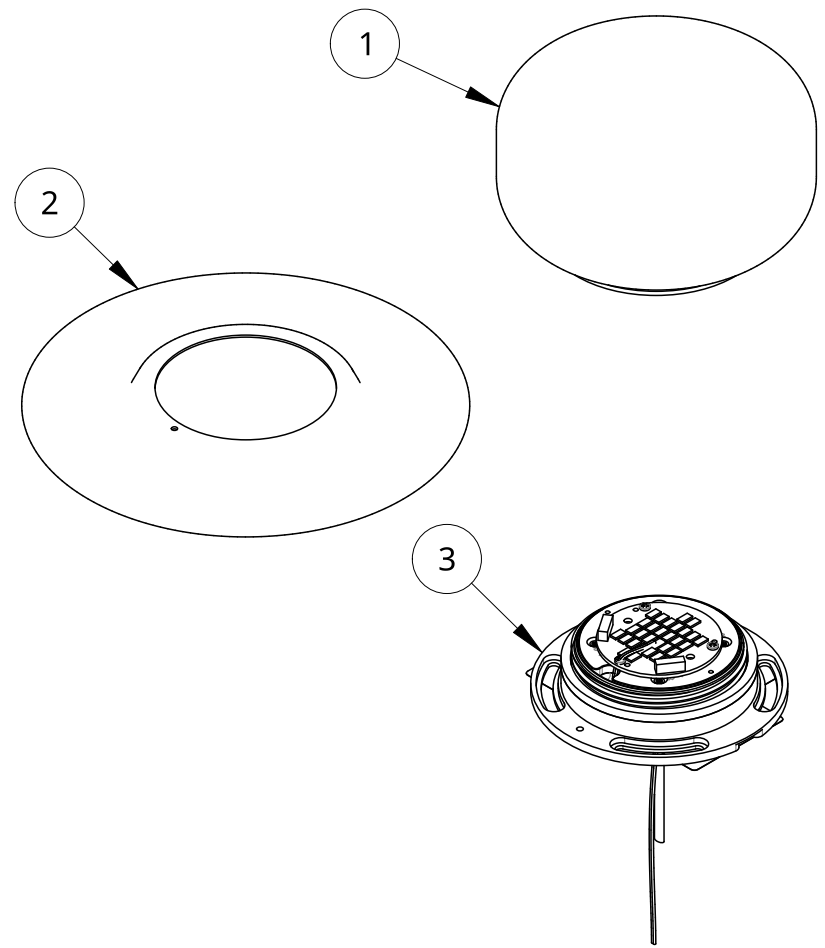
+1 212 388 1621

support@RBW.com

© RBW Studio LLC, 2013, 2020



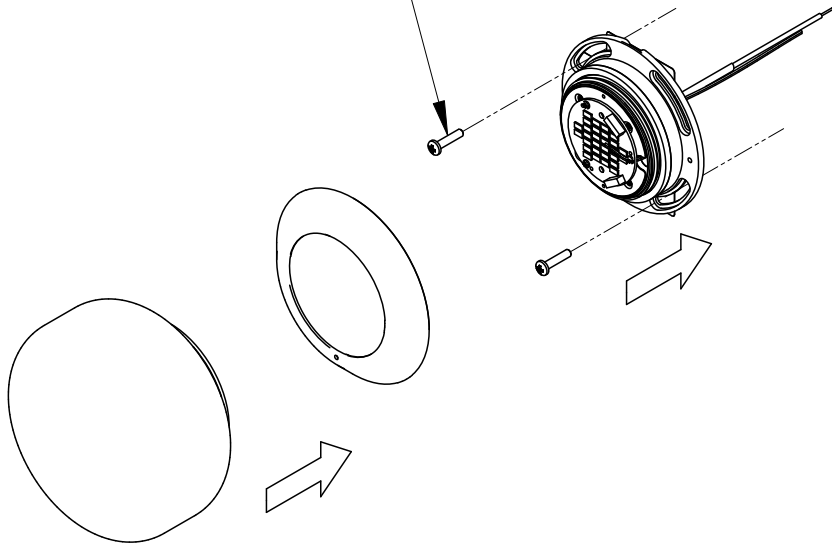
Item	Qty	Part number	Description
1	1	11955	Pastille Globe IP20 Sub-Assembly
2	1	11950-PC30	Pastille Sconce Collar PC30
3	1	10381-27	Pastille Sconce Kit DC - GLV 50 IP20 Sub-Assembly



Item	Qty	Part number	Description
1	1	11955	Pastille Globe IP20 Sub-Assembly
2	1	11952-PC30	Pastille Sconce Plate 2 PC30
3	1	10381-27	Pastille Sconce Kit DC - GLV 50 IP20 Sub-Assembly

Collar

*Fasteners not included

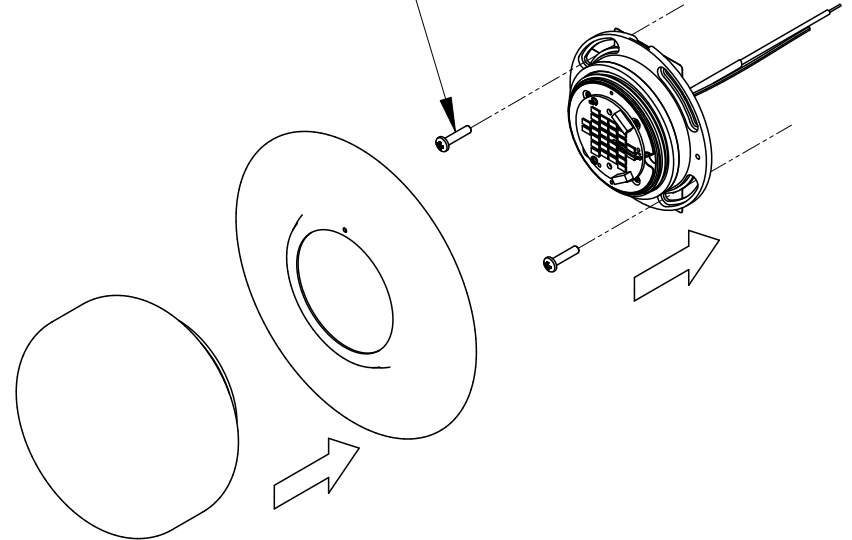


Installation - Pastille Collar

1. Connect sconce leads to low voltage leads.
2. Use appropriate fasteners to fasten the Sconce Kit to the mounting surface.
3. Place Collar or Sconce Plate 2 over Sconce Kit so it is flush with the wall.
4. Thread Pastille Globe onto the Sconce Kit to tightly secure all components.

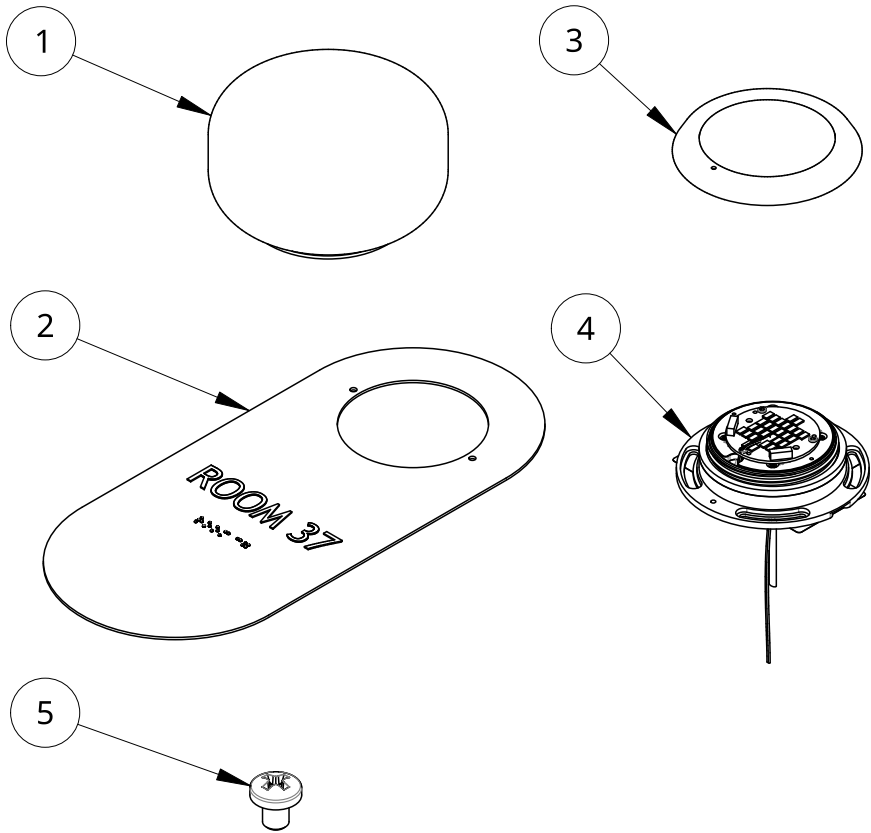
Disc

*Fasteners not included

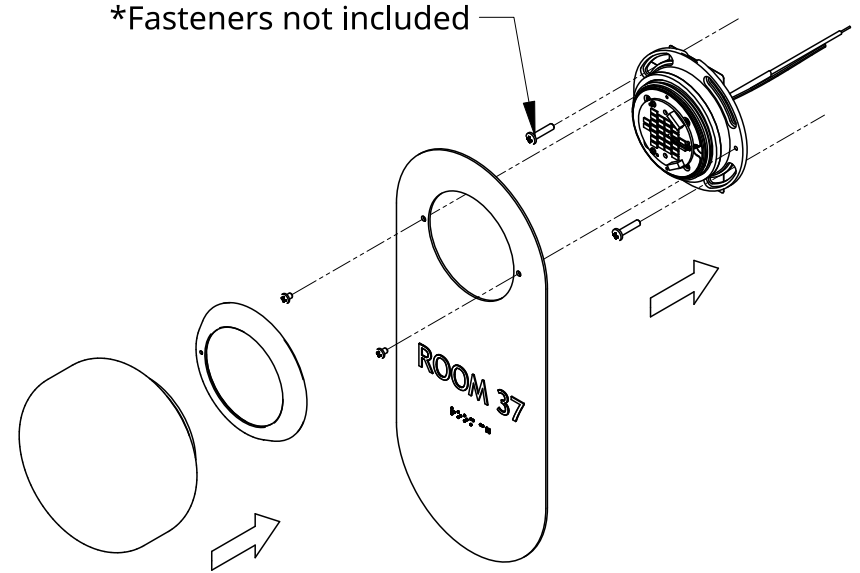


Installation - Pastille Collar

1. Refer to previous steps.



Item	Qty	Part number	Description
1	1	11955	Pastille Globe IP20 Sub-Assembly
2	1	11953-PC30	Pastille Sconce Plate Sign rF
3	1	11945-PC30	Mount Collar PC30
4	1	10330-27	Pastille Sconce Kit 120V AB IP20 Sub-Assembly
5	2	91772A143	Pan head machine screw #6-32 x 0.1875 Stainless Steel



Installation - Pastille Wayfind

1. Connect sconce leads to low voltage leads.
2. Use appropriate fasteners to fasten the Sconce Kit to the mounting surface.
3. Fix Sconce Plate Sign to Sconce Kit using included 6-32 Machine Screws.
4. Place Mount Collar over Sconce Kit.
5. Thread Pastille Globe onto the Sconce Kit to tightly secure Mount Collar to Sconce Kit.
6. Congratulations! End of guide.