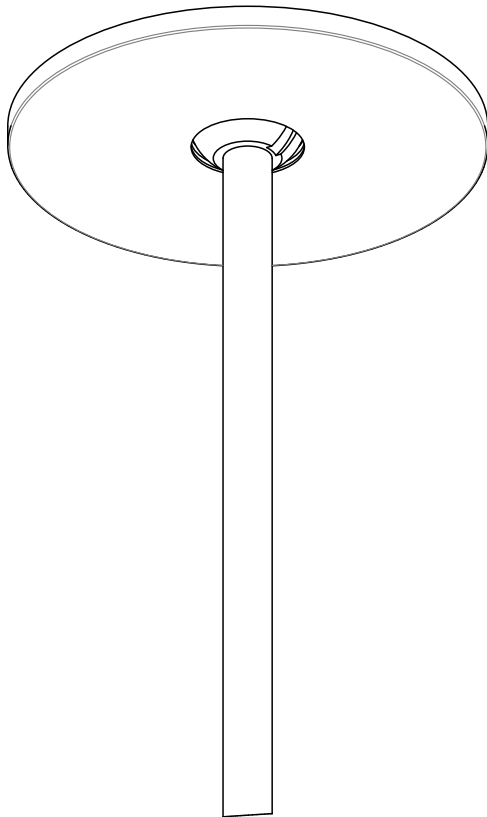


Flat Canopy

13073 rB

Round
Adjustable Stem



CAUTION:

Before starting, turn off power
at main circuit panel.

ADVERTENCIA:

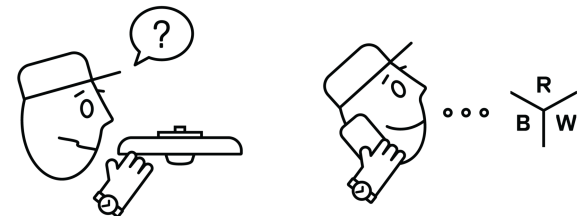
Antes de comenzar la instalación,
apague la corriente en el tablero
principal.

ATTENTION:

Coupez l'alimentation avant de
procéder à l'installation.



Calling for backup? Scan above
to contact our team.

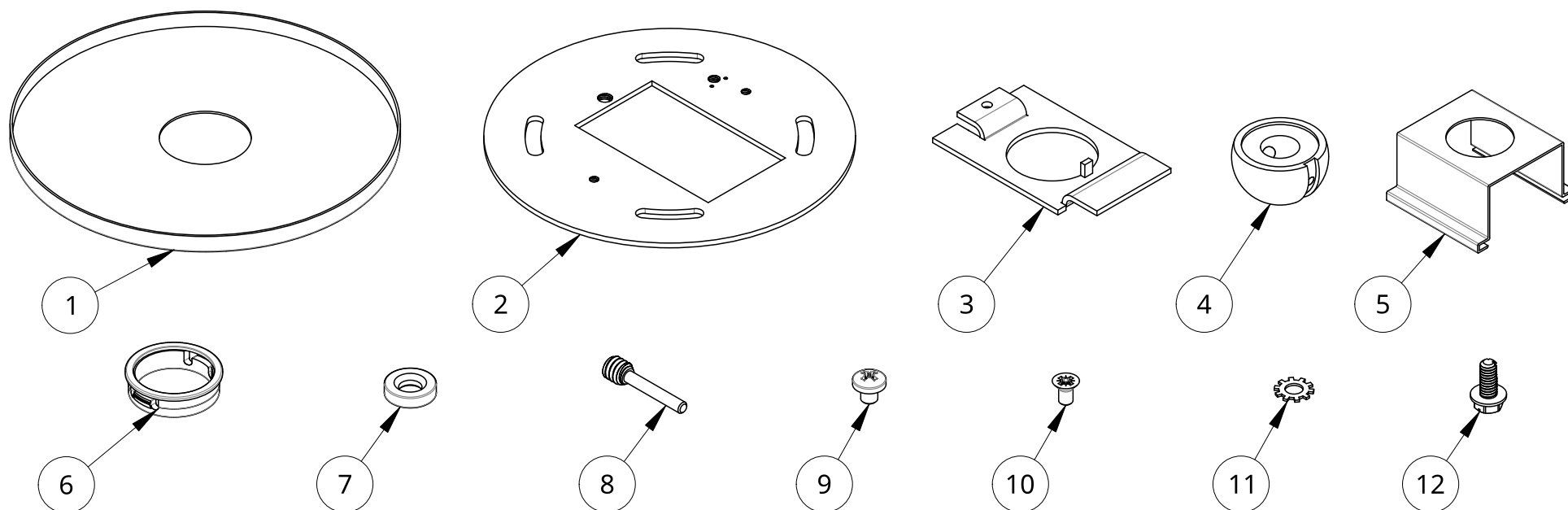


www.RBW.com

+1 212 388 1621

support@RBW.com

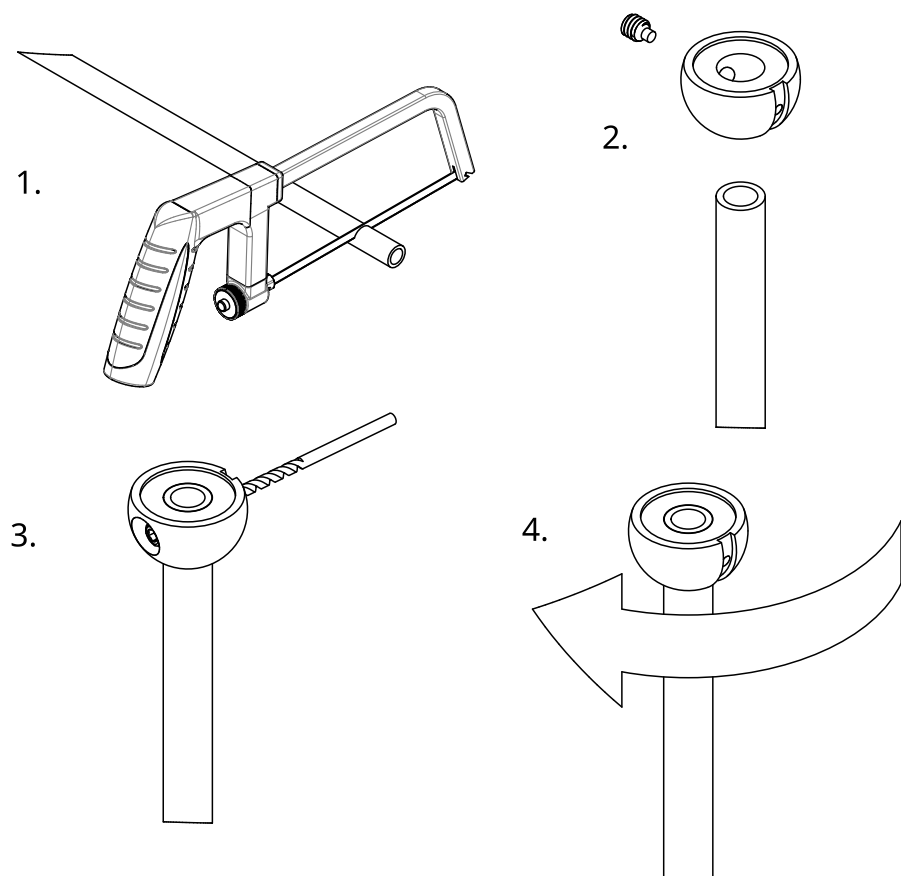
© RBW Studio LLC, 2013, 2020



| Item | Qty | Part number | Description |
|------|-----|-------------|--|
| 1 | 1 | 11498-PC20 | 5" Round Canopy w/1.180" CH |
| 2 | 1 | 11543 | Mono Point Base Crossbar |
| 3 | 1 | 11542 | Mono Point Crossbar Center Plate |
| 4 | 1 | 11541-PC20 | 1/4"IPS Adjustable Half Ball |
| 5 | 1 | 11538 | Mono Point Retaining Clip |
| 6 | 1 | 11537 | 7/8" Hole Bushing |
| 7 | 2 | 11544 | #6 & #8 Magnet |
| 8 | 1 | 11539 | 1/4"-20 Long Allen Hex Head Pin |
| 9 | 1 | | Pan head machine screw #8-32 x 0.1875 Stainless Steel 316 |
| 10 | 2 | 90273A144 | Flat countersunk head (82) machine screw #6-32 x 0.25 Stainless Steel |
| 11 | 1 | | Type B external tooth lock washer #8 Stainless Steel 316 |
| 12 | 1 | 92597A200 | 8-32 Thread, 3/8" Long Electrical Grounding Screw Green-Dyed Zinc-Plated Steel |

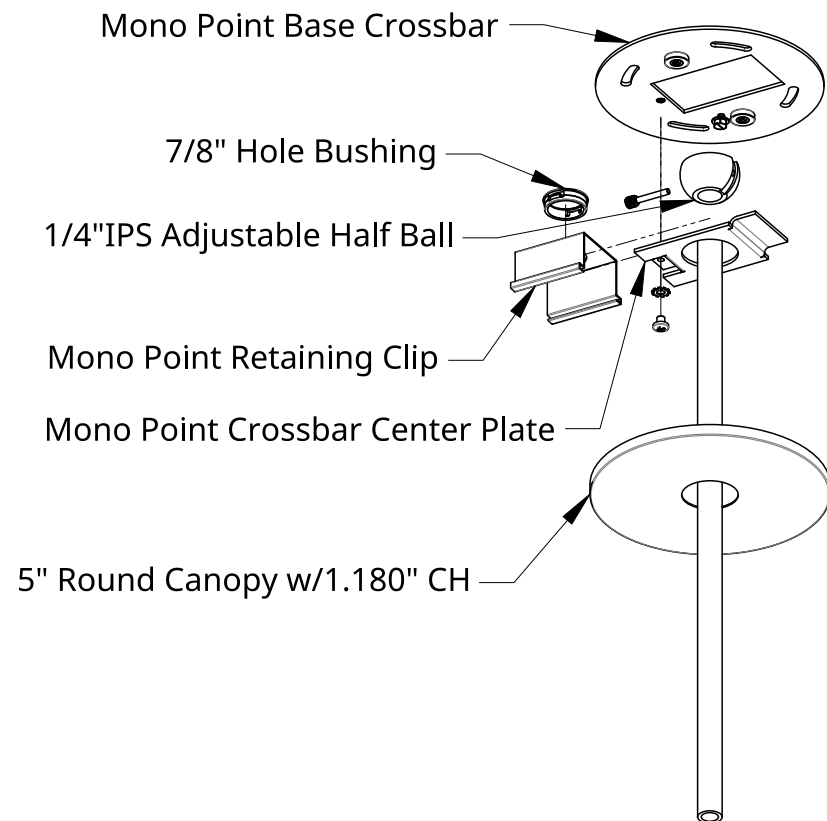
* Optional: IF adjusting drop height is desired

Remove wires from Stem before cutting.



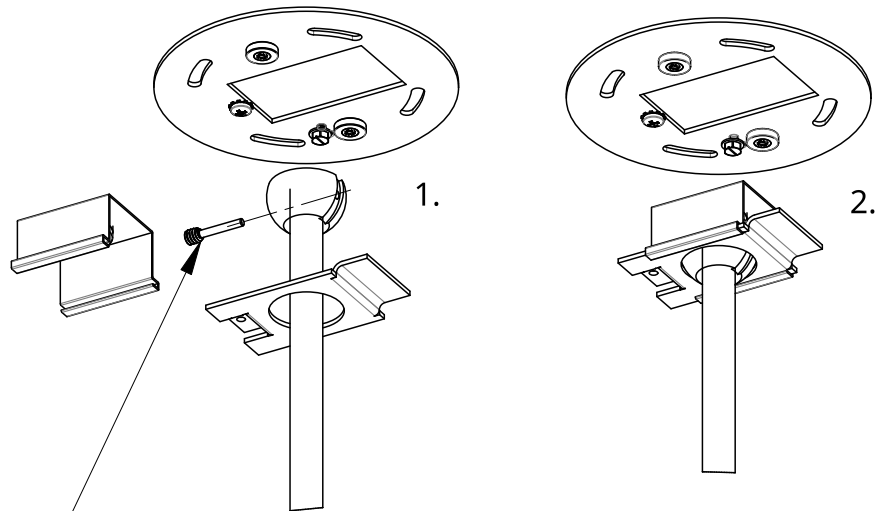
Installation - Stem Adjustment

1. Cut Stem to desired length with an appropriate tool and deburr inside edge.
2. Insert the Stem into the Half-Ball and secure it with the short included set screw.
3. Drill a 1/8" hole through the hole in the side of the Half-Ball opposite the set screw.
4. Loosen the set screw and rotate Half-Ball 180 degrees.
5. Tighten set screw once it is centered on the hole in the Stem.
6. Drill second hole in Stem.

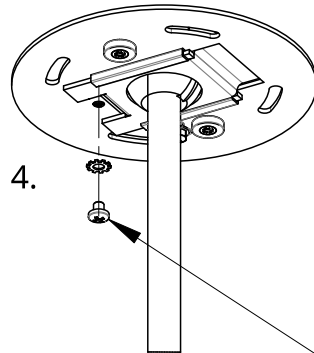
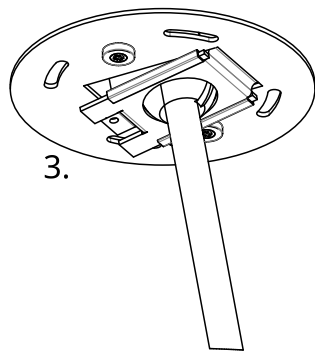


Installation - Adjustable Canopy

1. Mount Mono Point Base Crossbar to mounting surface with appropriate fasteners.
2. Pull out leads from module 6" longer than Stem.
3. Place Round Canopy over Stem and gently guide it down to rest on Shade.
4. Place Crossbar Center Plate and Half Ball onto Stem.



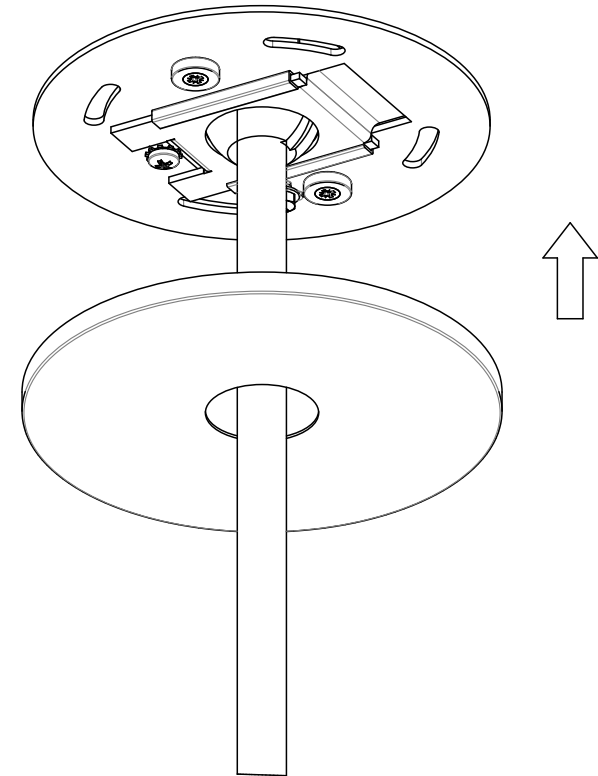
1/4"-20 Long Allen Hex Head Pin



Pan head machine screw #8-32 x 0.1875 Stainless Steel 316

Installation - Adjustable Canopy

1. Secure the Stem to the Half Ball by threading included Allen Hex Head Pin through the drilled hole in Stem.
2. Snap Hole Bushing into Retaining Clip and slide onto Center Plate.
3. Hinge Center Plate as shown above, align tapped screw holes and secure with 8-32" Screw and Lock Washer.



Installation - Adjustable Canopy

4. Slide Round Canopy up to magnets on Mono Point Base Crossbar.
5. Congratulations! End of guide.