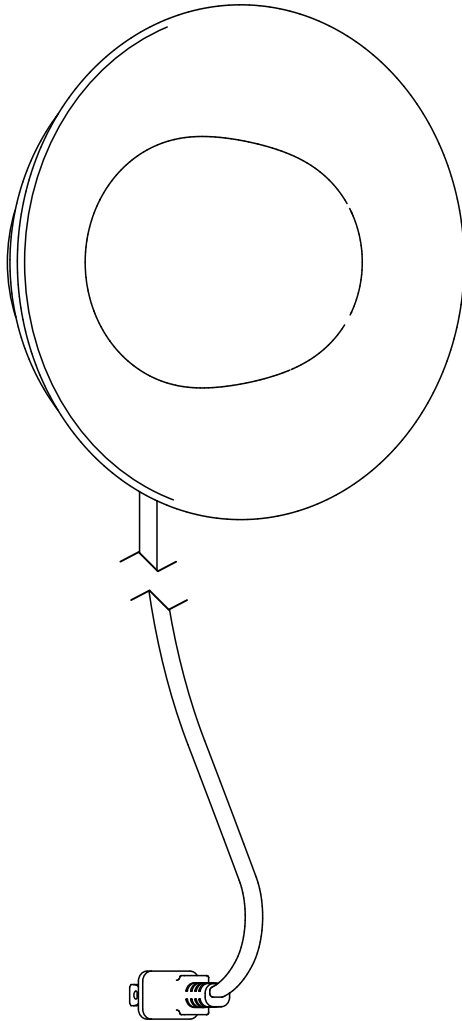




Hoist Corded Plug-in Sconce

18520 rA



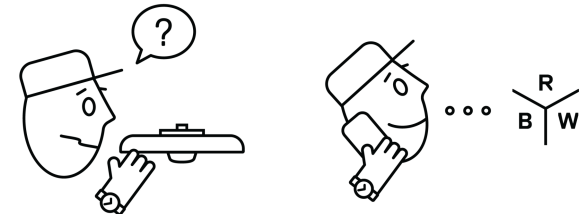
IMPORTANT SAFETY INSTRUCTIONS

This portable luminaire has a polarized plug (one blade is wider than the other) as a feature to reduce the risk of electric shock. This plug will fit in a polarized outlet only one way. If the plug does not fit fully in the outlet, reverse the plug. If it still does not fit, contact a qualified electrician. Never use with an extension cord unless plug can be fully inserted. Do not alter the plug.

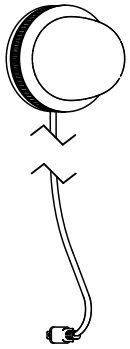
Input: 8W | 110-120VAC



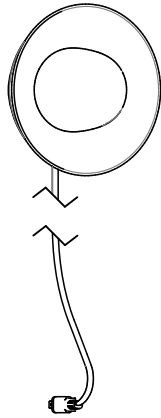
Calling for backup? Scan above
to contact our team.



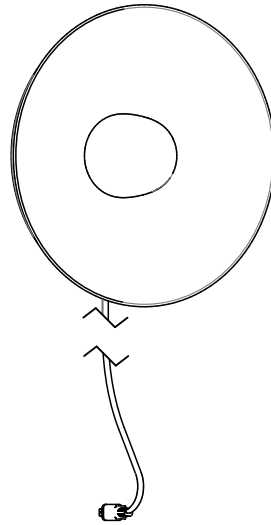
www.RBW.com
+1 212 388 0399
support@RBW.com
© 2023, RBW Studio LLC



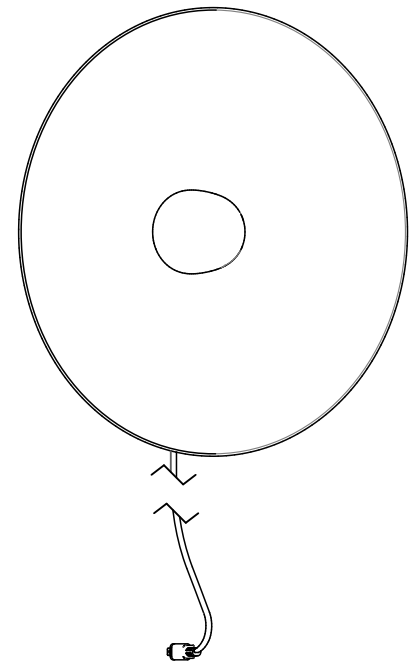
Bare



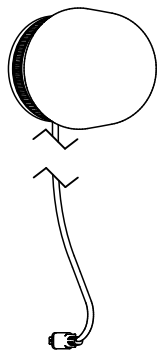
Small Shade



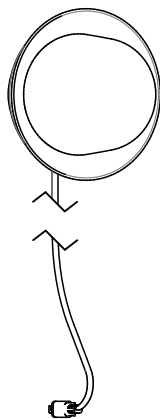
Medium Shade



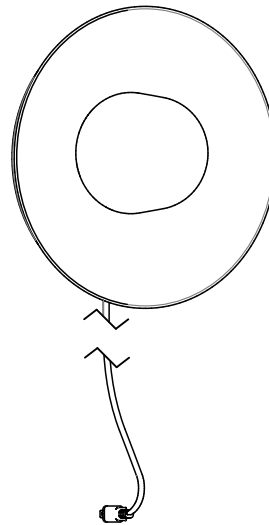
Large Shade



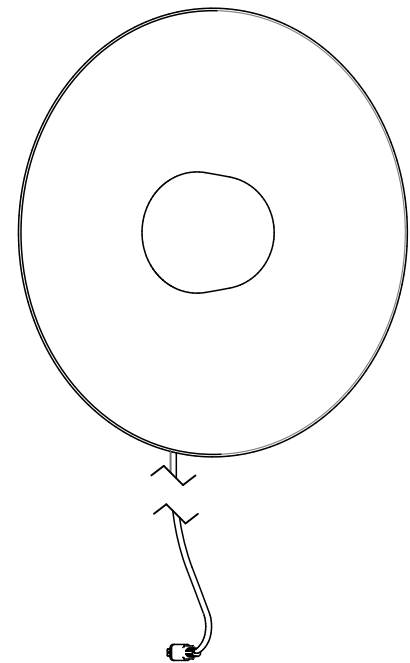
Bare



Small Shade



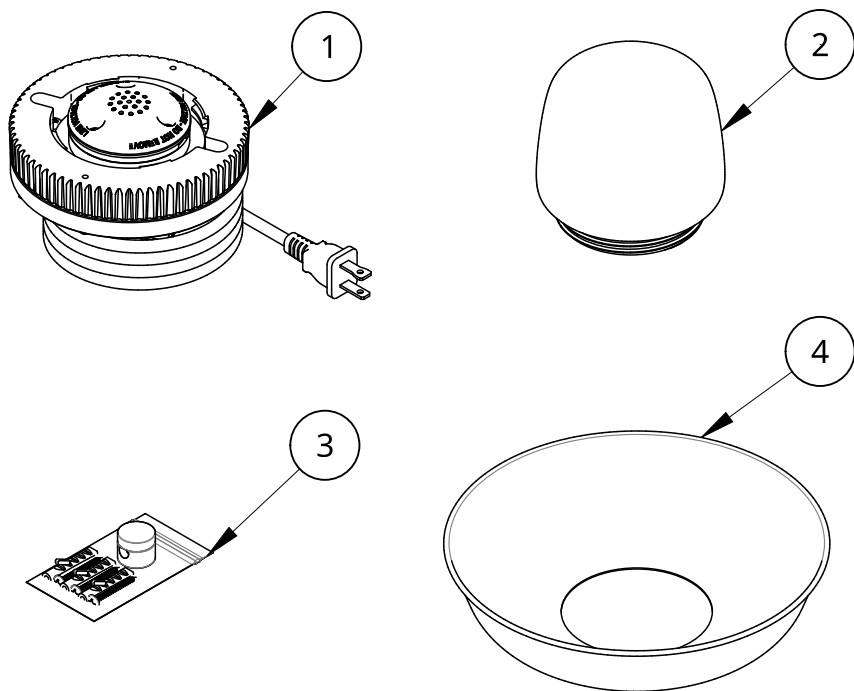
Medium Shade



Large Shade

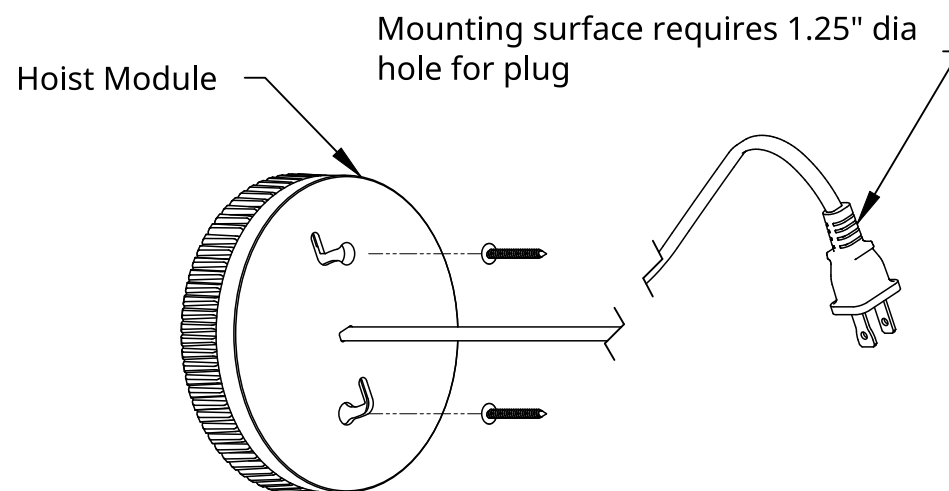
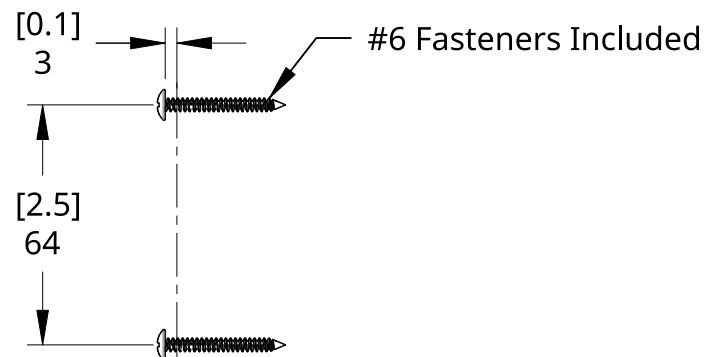
Corded Plug-in (Back)

What's Included: Part Configurations May Vary



Item	Qty	Part number	Description
1	1	18477-PC24-27	Package: Hoist. Corded Plug-in (Back). Cream White. 2700K CCT
2	1	14036	Package: Hoist Glass Small
3	1	18439	Package: Corded Plug-in Hardware Kit
4	1	14038-PC24	Package: Hoist Shade Small. Cream White

* Adjust Screw depth for tightness as needed

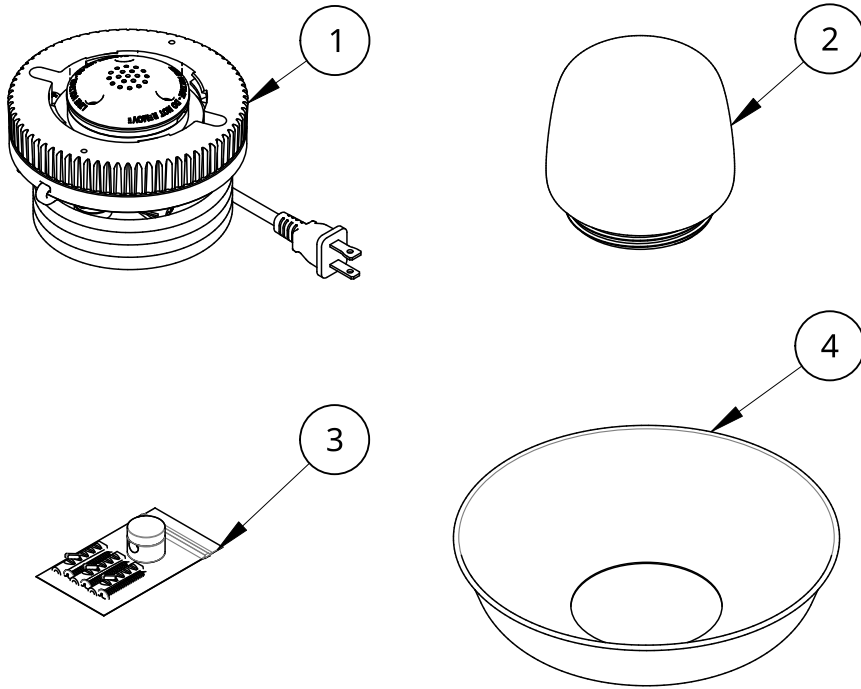


Installation - Module Corded Plug-in (Back)

1. Sink 2X #6 Screws using RBW mounting template so screw heads are approximately 0.1" from mounting surface.
2. Remove template from wall.
3. Place Module keyholes over screw heads.
4. Rotate Module counterclockwise until it drops vertically and is locked in position.

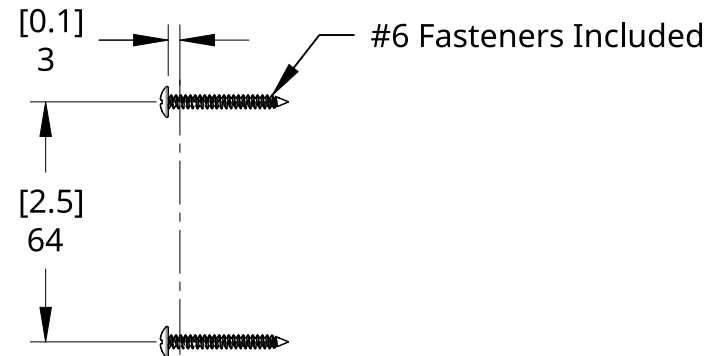
Corded Plug-in (Bottom)

What's Included: Part Configurations May Vary

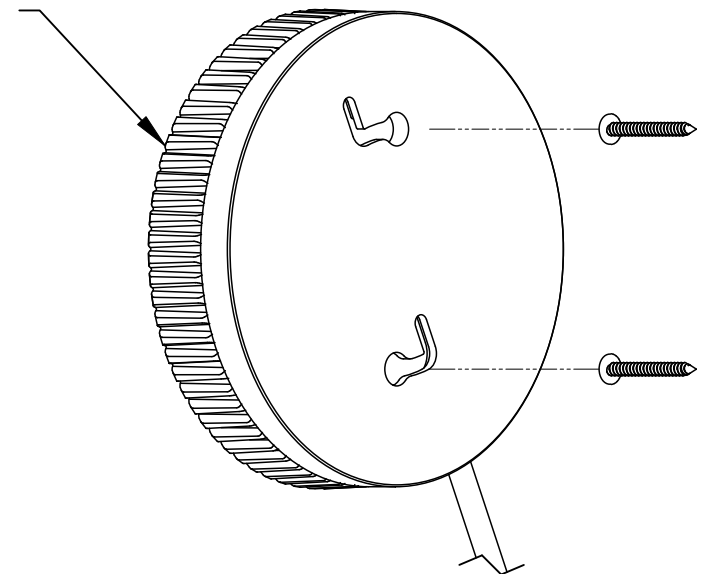


Item	Qty	Part number	Description
1	1	18478-PC24-27	Package: Hoist. Corded Plug-in (Bottom). Cream White. 2700K CCT
2	1	14036	Package: Hoist Glass Small
3	1	18439	Package: Corded Plug-in Hardware Kit
4	1	14038-PC24	Package: Hoist Shade Small. Cream White

* Adjust Screw depth for tightness as needed



Hoist Module

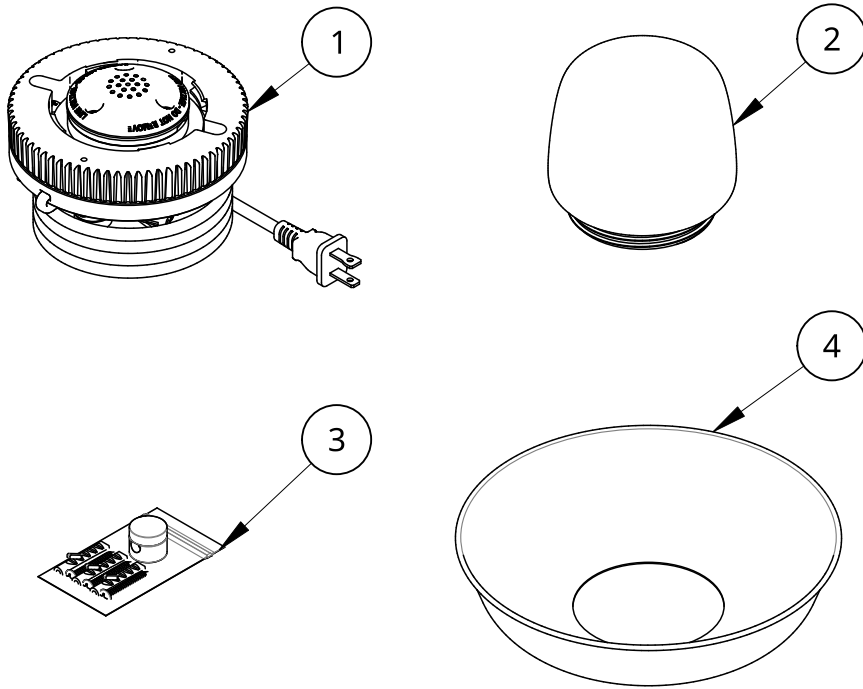


Installation - Module Corded Plug-in (Bottom)

1. Sink 2X #6 Screws using RBW mounting template so screw heads are approximately 0.1" from mounting surface.
2. Remove template from wall.
3. Place Module keyholes over screw heads.
4. Rotate Module counterclockwise until it drops vertically and is locked in position.

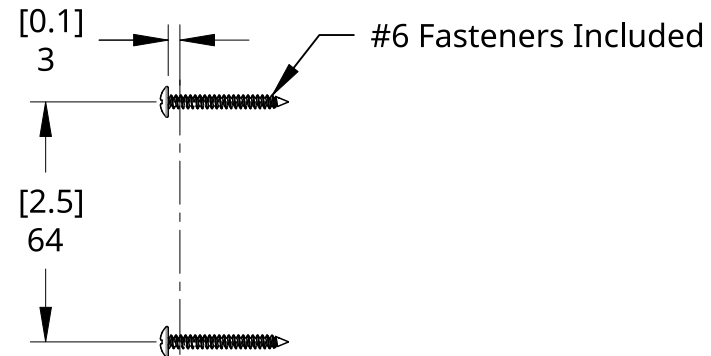
Corded Plug-in (Toggle Switch)

What's Included: Part Configurations May Vary

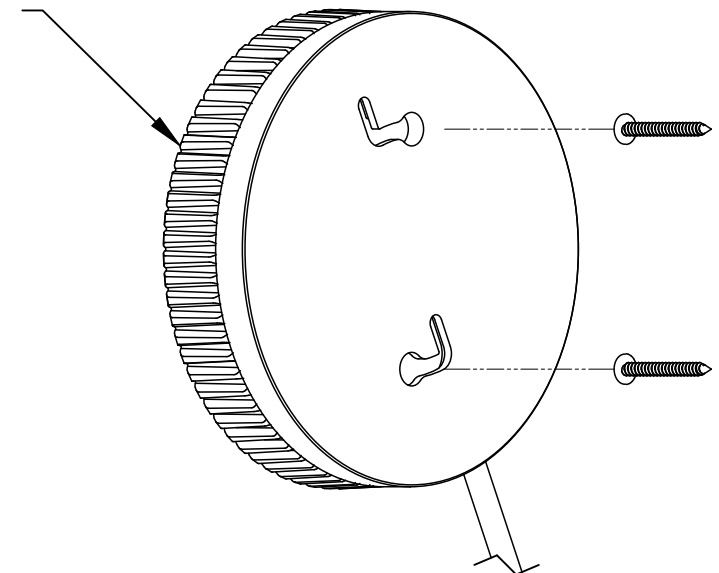


Item	Qty	Part number	Description
1	1	18479-PC24-27	Package: Hoist. Corded Plug-in (Toggle Switch). Cream White. 2700K CCT
2	1	14036	Package: Hoist Glass Small
3	1	18439	Package: Corded Plug-in Hardware Kit
4	1	14038-PC24	Package: Hoist Shade Small. Cream White

* Adjust Screw depth for tightness as needed



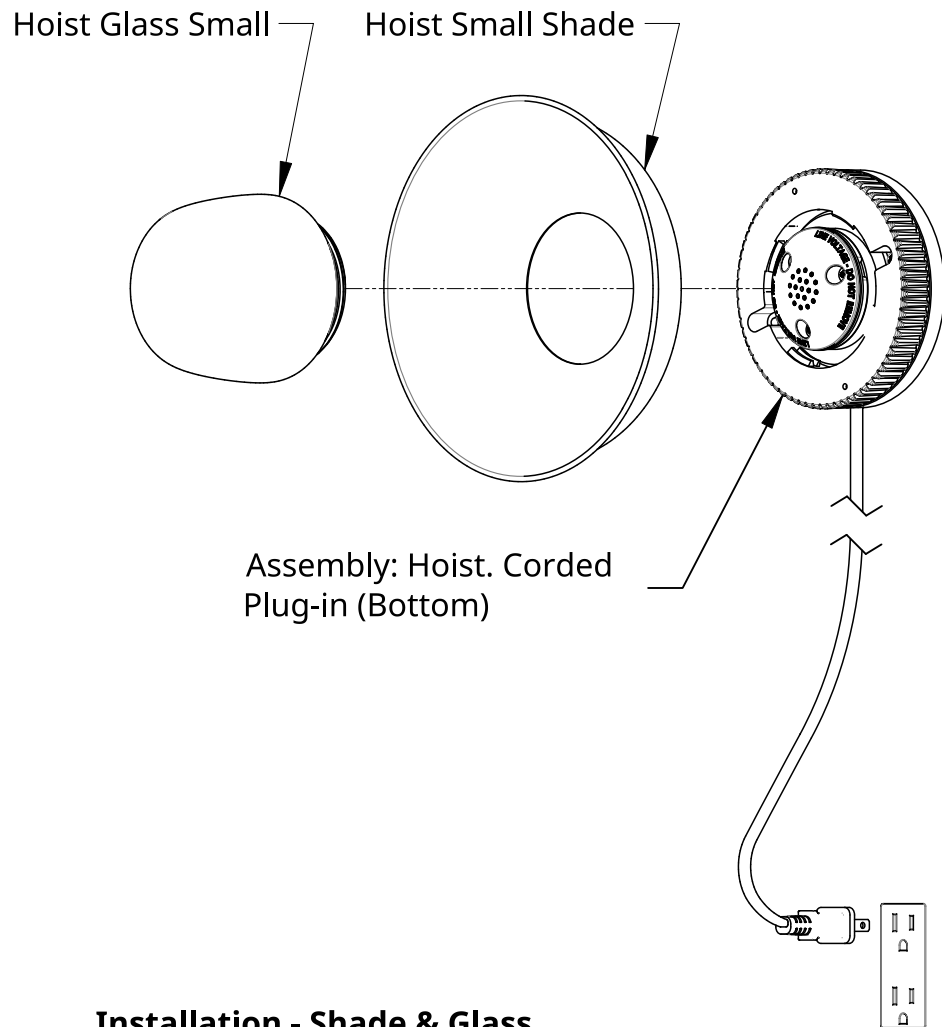
Hoist Module



Installation - Module Corded Plug-in (Toggle Switch)

1. Sink 2X #6 Screws using RBW mounting template so screw heads are approximately 0.1" from mounting surface.
2. Remove template from wall.
3. Place Module keyholes over screw heads.
4. Rotate Module counterclockwise until it drops vertically and is locked in position.

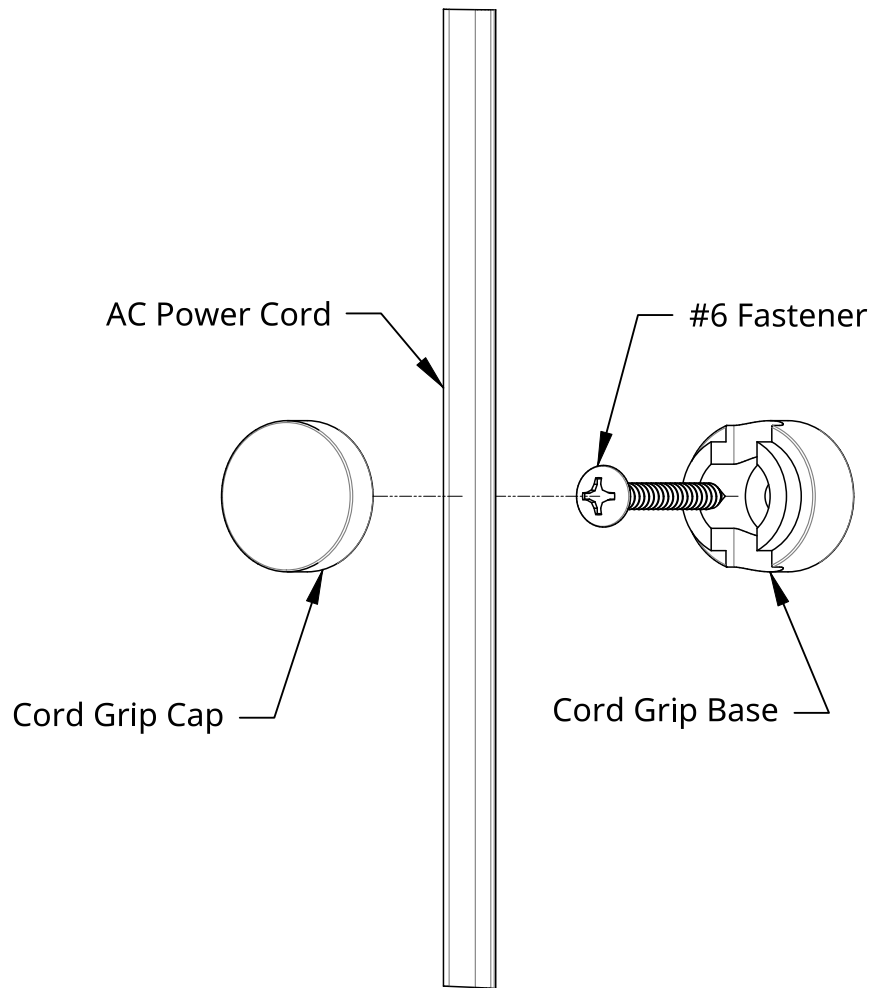
Part Configurations May Vary



Installation - Shade & Glass

1. Thread Hoist Glass clockwise into Hoist Portable to fasten included Hoist Shade to Hoist Portable module.
2. Plug in fixture to desired 110-120VAC outlet.

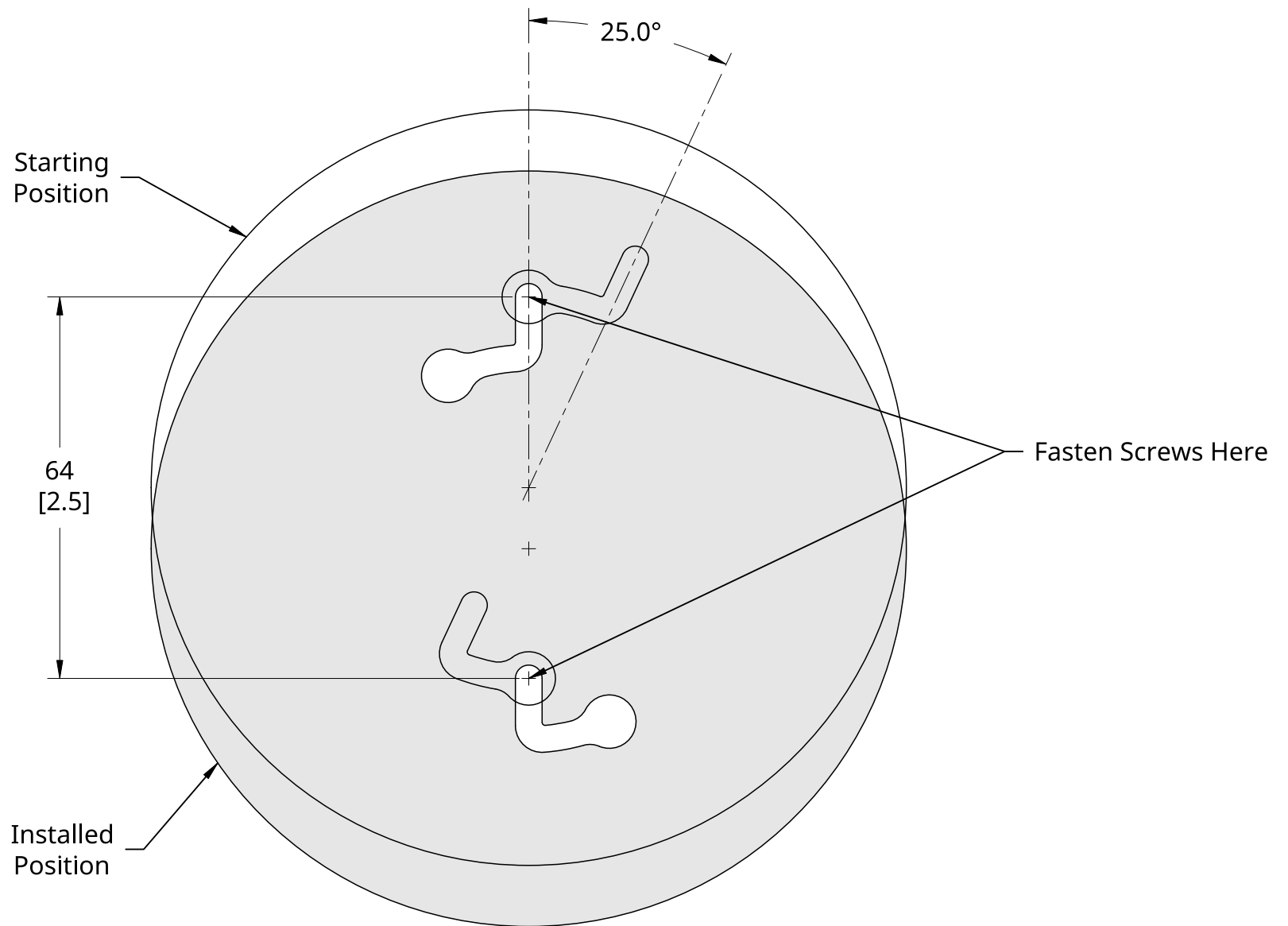
Page Intentionally Left Blank



Page Intentionally Left Blank

Installation - (Optional) Cord Grip

1. In desired location place Cord Grip Base against mounting surface and sink #6 Fastener through Cord Grip Base.
2. Place AC Power Cord into Cord Grip Base and thread cap clockwise onto Base.
3. Congratulations! End of guide.



RBW Mounting Template