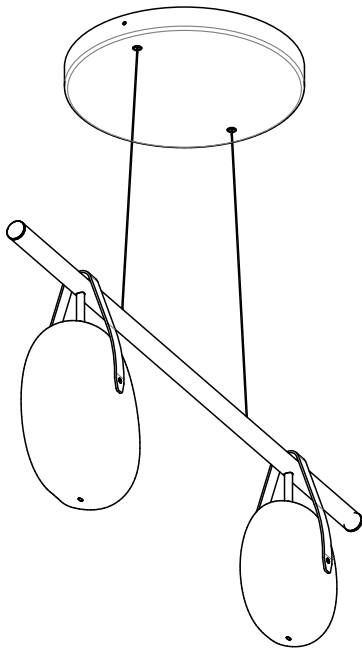




# Gala 42" Chandelier

15738 rA



## CAUTION:

Before starting, turn off power  
at main circuit panel.

## ADVERTENCIA:

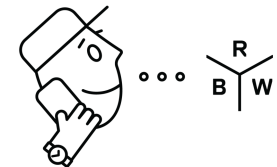
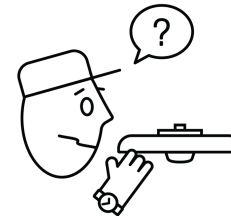
Antes de comenzar la instalación,  
apague la corriente en el tablero  
principal.

## ATTENTION:

Coupez l'alimentation avant de  
procéder à l'installation.



Calling for backup? Scan above  
to contact our team.

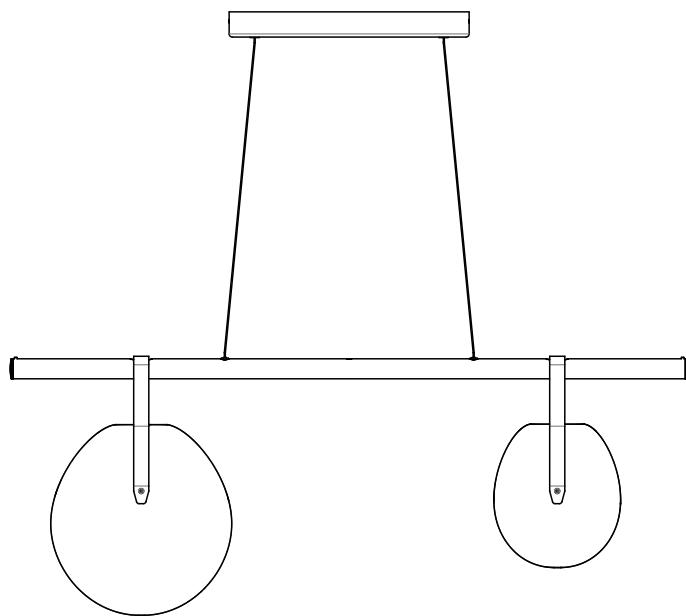


[www.RBW.com](http://www.RBW.com)

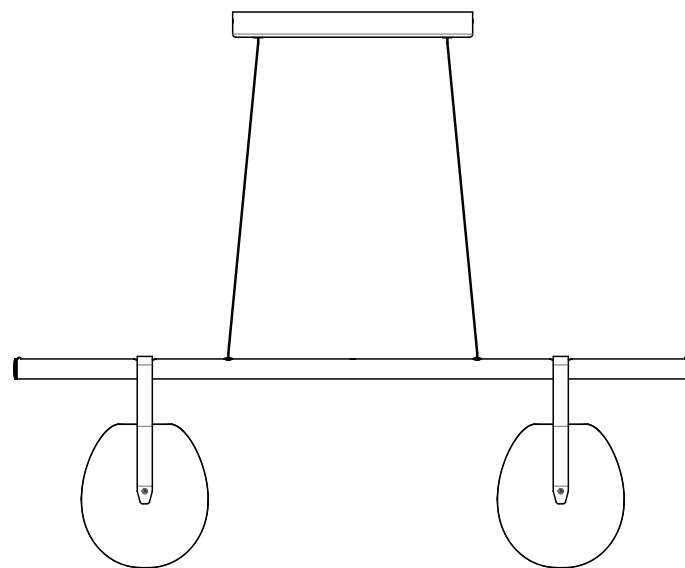
+1 212 388 0399

[support@RBW.com](mailto:support@RBW.com)

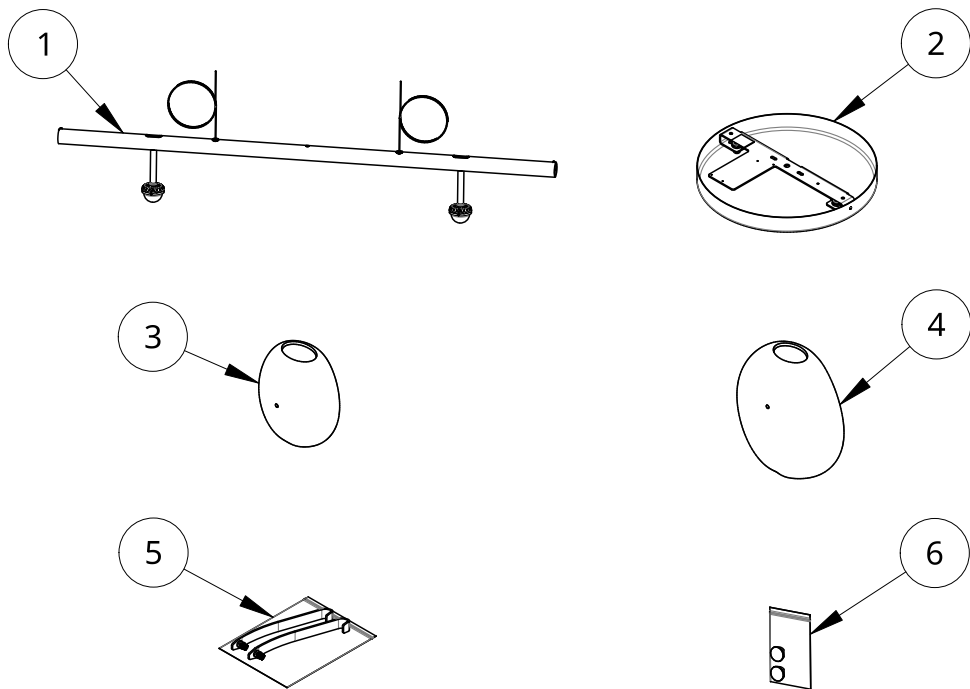
© RBW Studio LLC, 2013, 2020



GC-4210



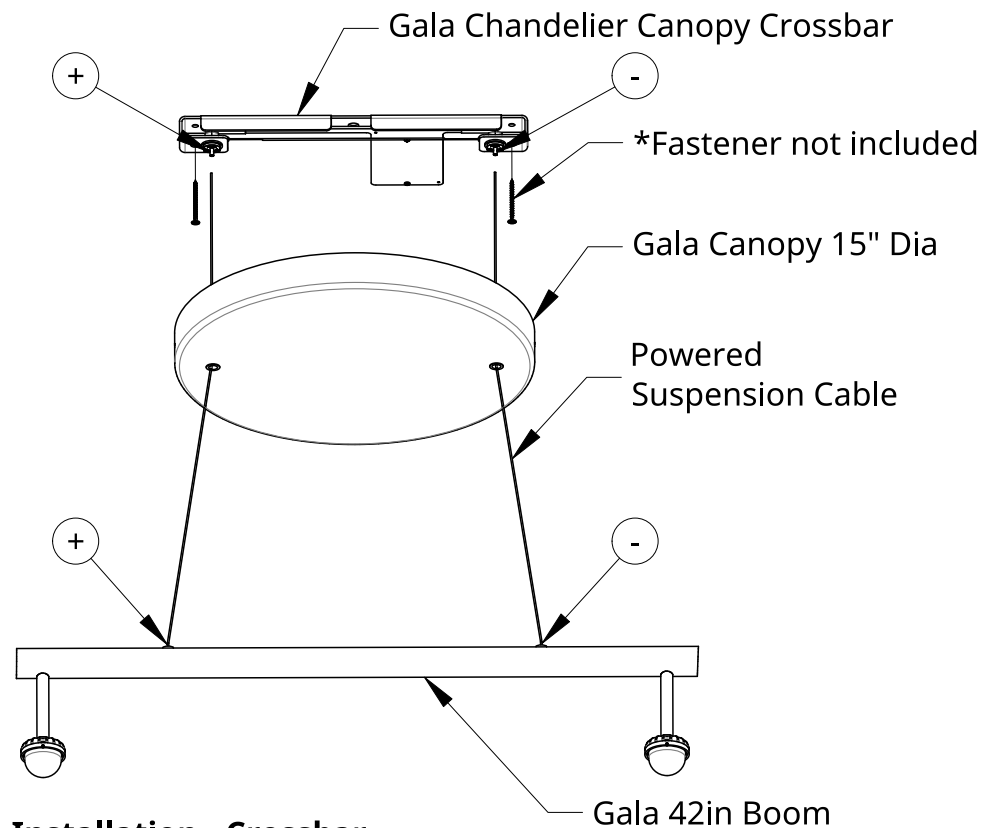
GC-4230



What's Included: Part Configurations May Vary

Item	Qty	Part number	Description
1	1	10481-PC30-22	Assembly: Gala Boom. 42 Packaging. 2200K CCT. Matte Black
2	1	11888-PC30	Package: Gala Chandelier Canopy. Matte Black
3	1	11067	Gala Chandelier Small Globe
4	1	11066	Gala Chandelier Large Globe
5	2	15725-PC30	Assembly: Gala Chandelier Strap Kit. Matte Black
6	1	15727-PC30	Gala End Cap Hardware Kit. Matte Black

Ceiling Surface	Recommended Fastener
Stud-Backed Drywall	#10 Drywall Screw
Hollow Drywall	Molly or Toggle Bolt
Concrete Slab	10-24 Expanding Anchor
Wood	#10 Wood Screw

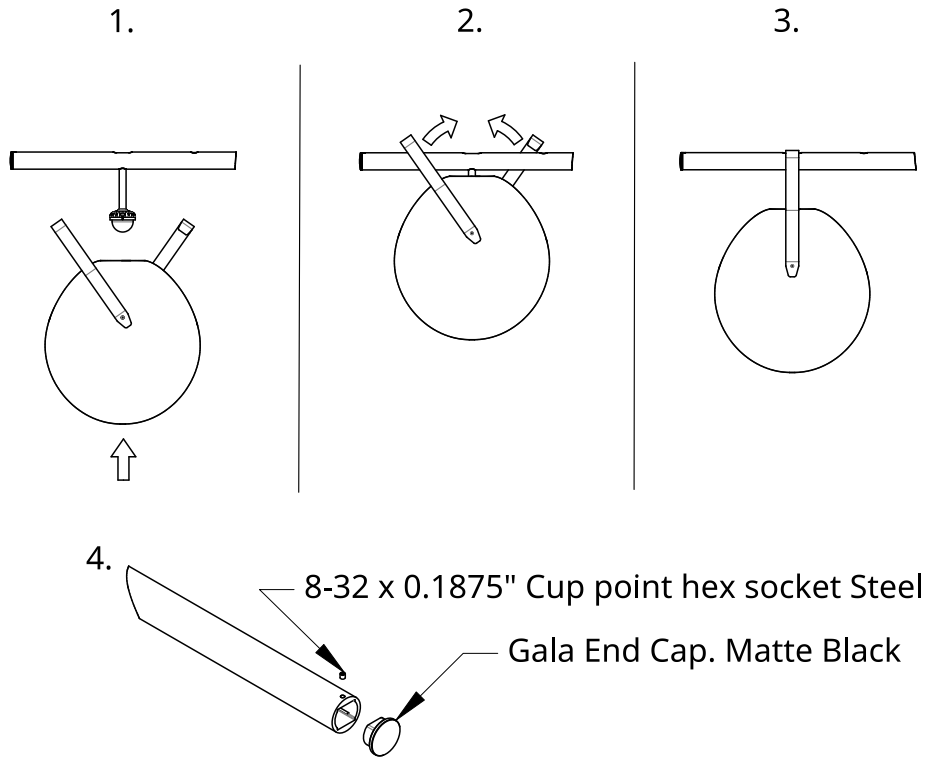


### Installation - Crossbar

1. Mount Crossbar over junction box in desired orientation using recommended fastener.  
Note: +/- Polarity.
2. Feed Powered Suspension Cables through Canopy.  
Note: +/- Polarity.
3. Feed Cables into corresponding Cable Grippers.

See Canopy Install Instructions 15743 for more information

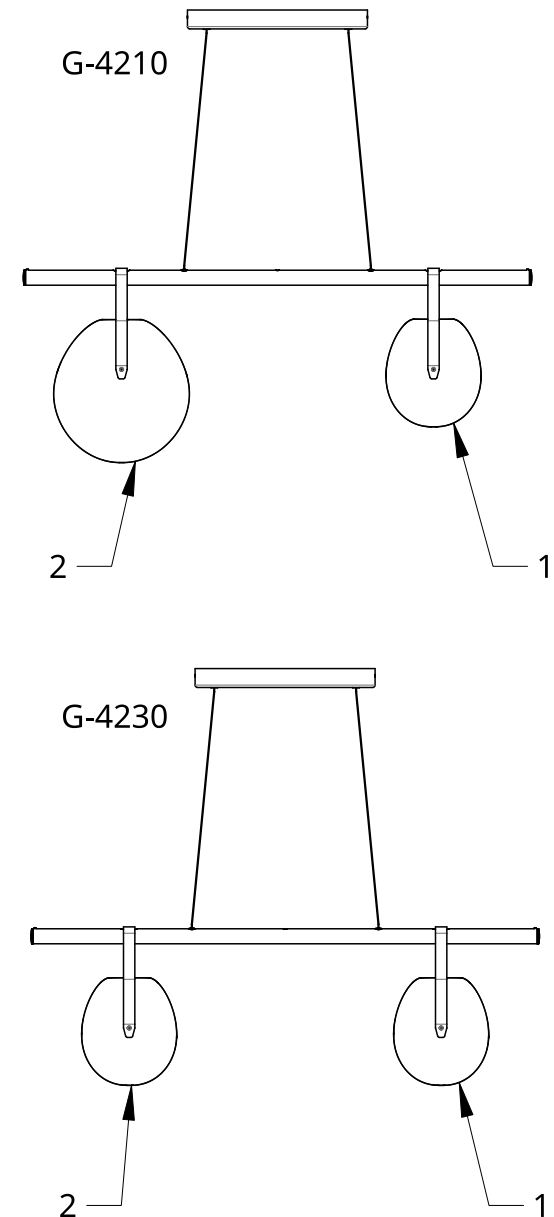
Note: While installing globes, fixture will be off balance and will require a second person to balance the mast until all globes are in place.



### Installation - Globes and End Caps

1. With Straps attached to Globe and rotated at 45° from vertical, lift Globe upward at light source so Straps extend above Boom.
2. Rotate Straps to their vertical position.
3. Lower Globe until the Straps fit into slot on top of Boom.
4. Fasten Gala End Cap into each open end of fixture via included 8-32 x 0.1875" Set Screws
5. Congratulations! End of guide.

### Gala 42": Install Sequence



Note: Apply above globe installation steps for all configurations of Gala Chandelier to avoid uneven weight distribution and possible damage.