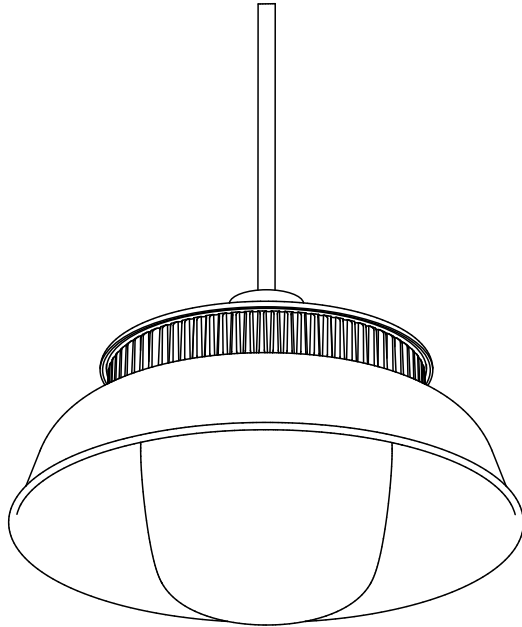




Hoist Pendant

12742 rC

AC Input



CAUTION:

Before starting, turn off power at main circuit panel.

ADVERTENCIA:

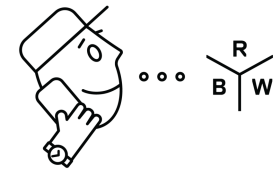
Antes de comenzar la instalación, apague la corriente en el tablero principal.

ATTENTION:

Coupez l'alimentation avant de proceder à l'installation.



Calling for backup? Scan above to contact our team.

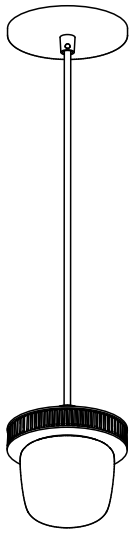


www.RBW.com

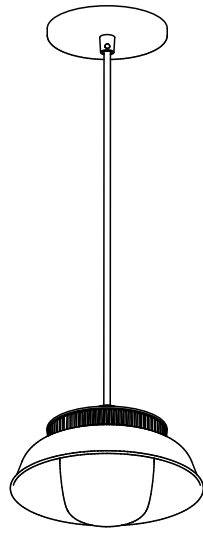
+1 212 388 0399

support@RBW.com

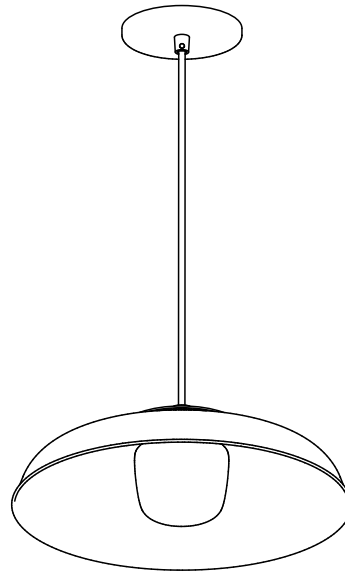
© RBW Studio LLC, 2013, 2020



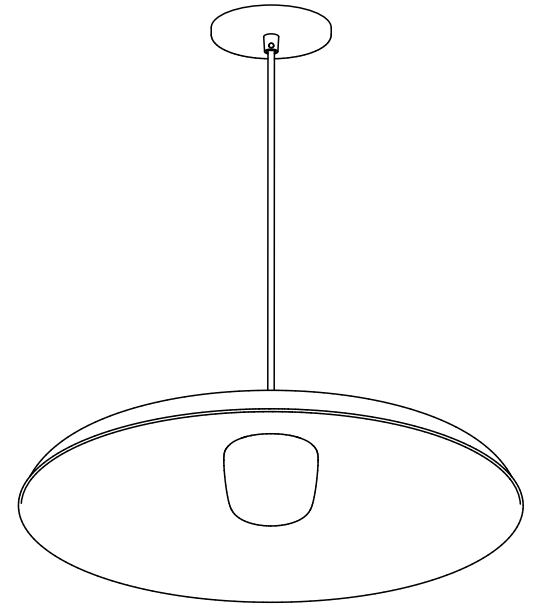
Bare



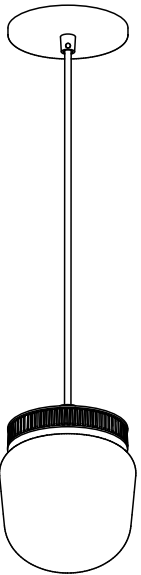
Small



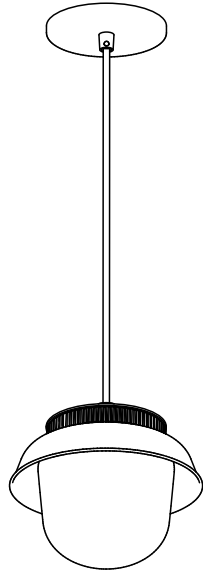
Medium



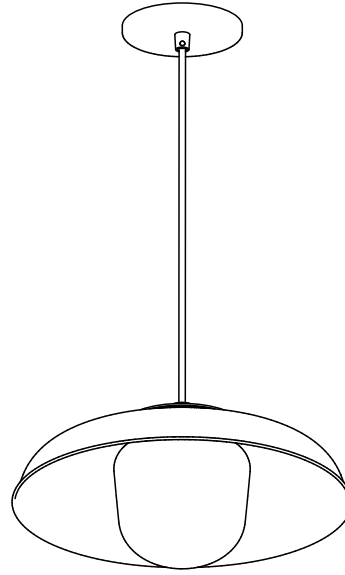
Large



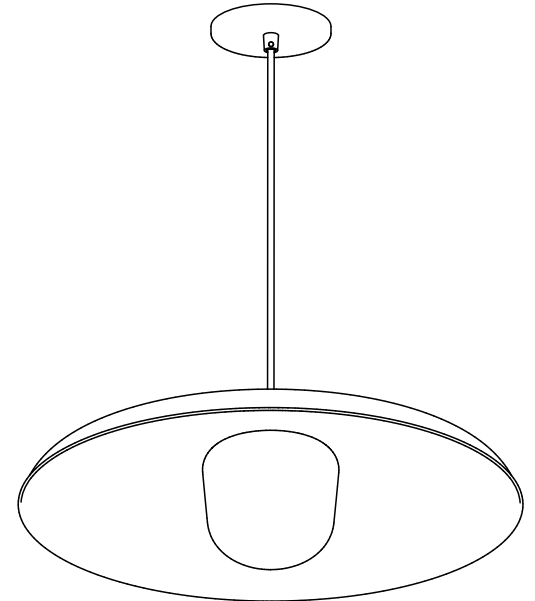
Bare



Small

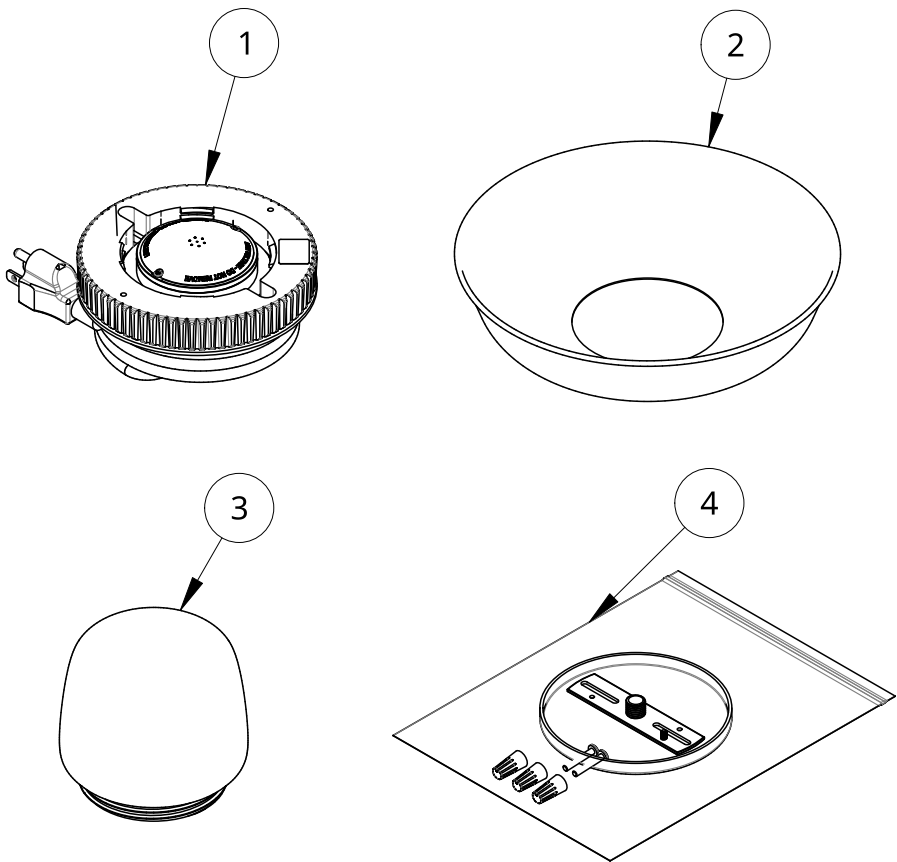


Medium

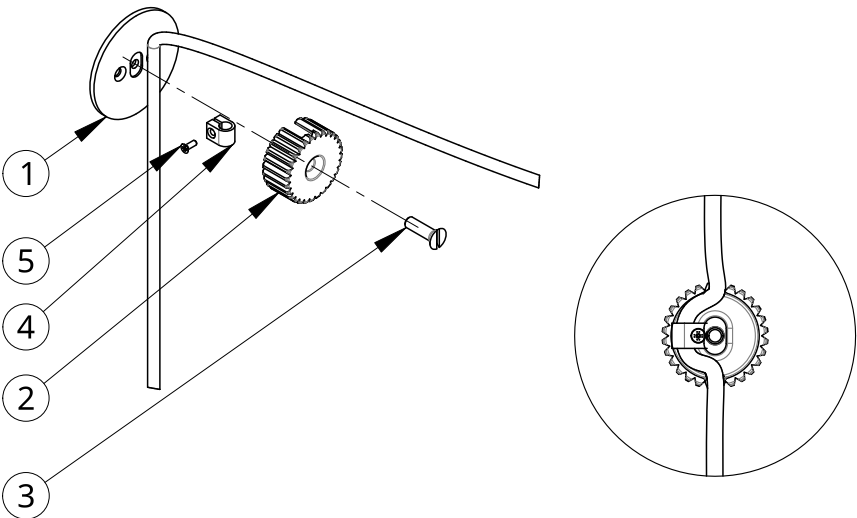


Large

What's Included: Part Configuartions May Vary



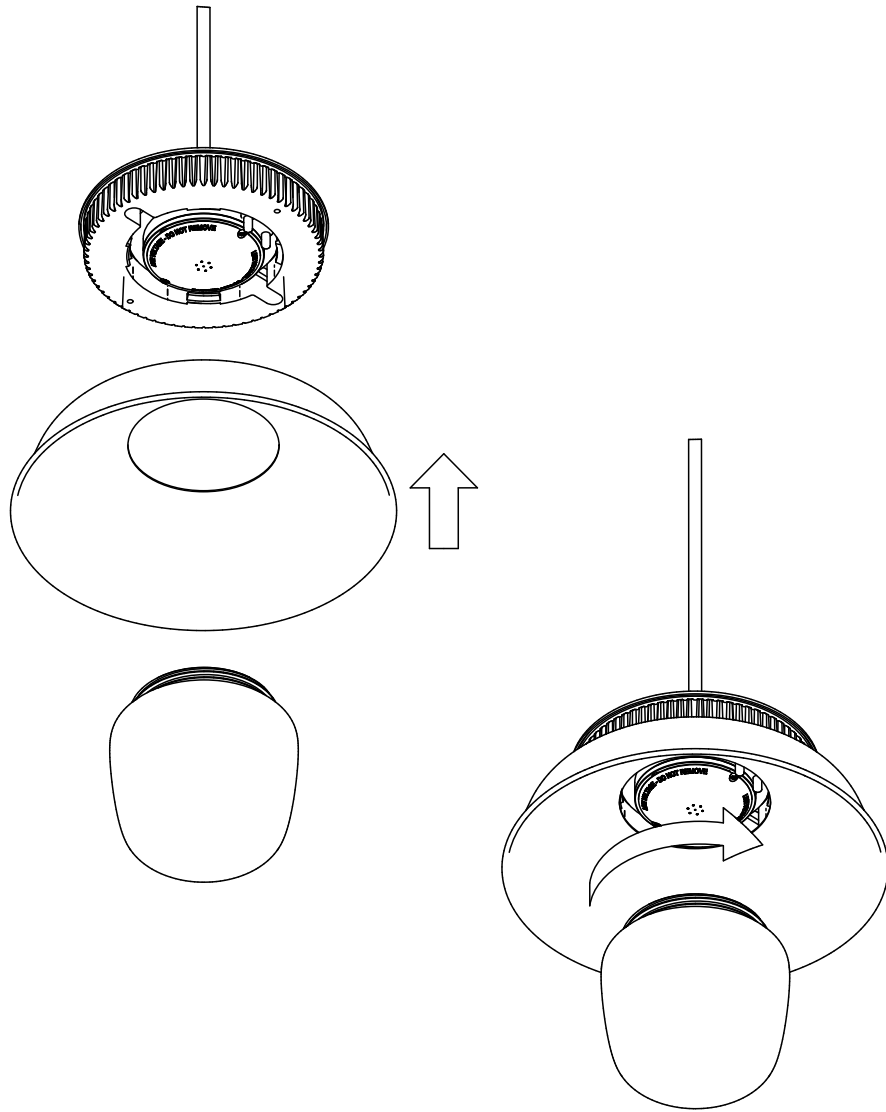
Item	Qty	Part number	Description
1	1	10320-PC30	Hoist Pendant Module Sub-Assembly. 120 AB. Matte Black
2	1	10183-PC30	Hoist Small Shade w/ Gasket. Matte Black
3	1	11659	Hoist Glass Small
4	1	11860	Hoist Pendant Hardware and Canopy Kit



Installation - Hoist SWAG Puck

1. Mount Cable Puck Plate to desired location on the wall using appropriate #6 flat head screws.
2. Place Hoist Cable Gripper around SJT and secure by using 4-40 flat head fastener.
3. Guide SJT around center of the Cable Puck.
4. Secure Cable Puck to Cable Puck Plate with included 1/4-20 Flat Head Fastener

Item	Qty	Part number	Description
1	1	11685-PC30	Hoist Cable Puck Plate Matte Black
2	1	11687-PC30	Hoist Cable Puck Matte Black
3	1	91781A541	#1/4-20 x 7/8" Flat head (82) machine screw Stainless Steel
4	1	11686	Hoist Cord Gripper
5	1	91771A107	#4-40 x 5/16" Flat head (82) machine screw Stainless Steel



Page intentionally left blank

Installation - Shade and Glass

1. Raise Hoist Shade and Hoist Glass to Hoist Pendant LED Module.
2. Thread Hoist Glass clockwise into Hoist Pendant LED Module to secure Hoist Shade.
3. Congratulations! End of guide.