

FOREVER  
SCHONBEK

## SEDUCTION SJ4333RE



THIS DESIGN IS THE PROPRIETARY  
TRADE DRESS/TRADEMARK OF  
W SCHONBEK LLC.

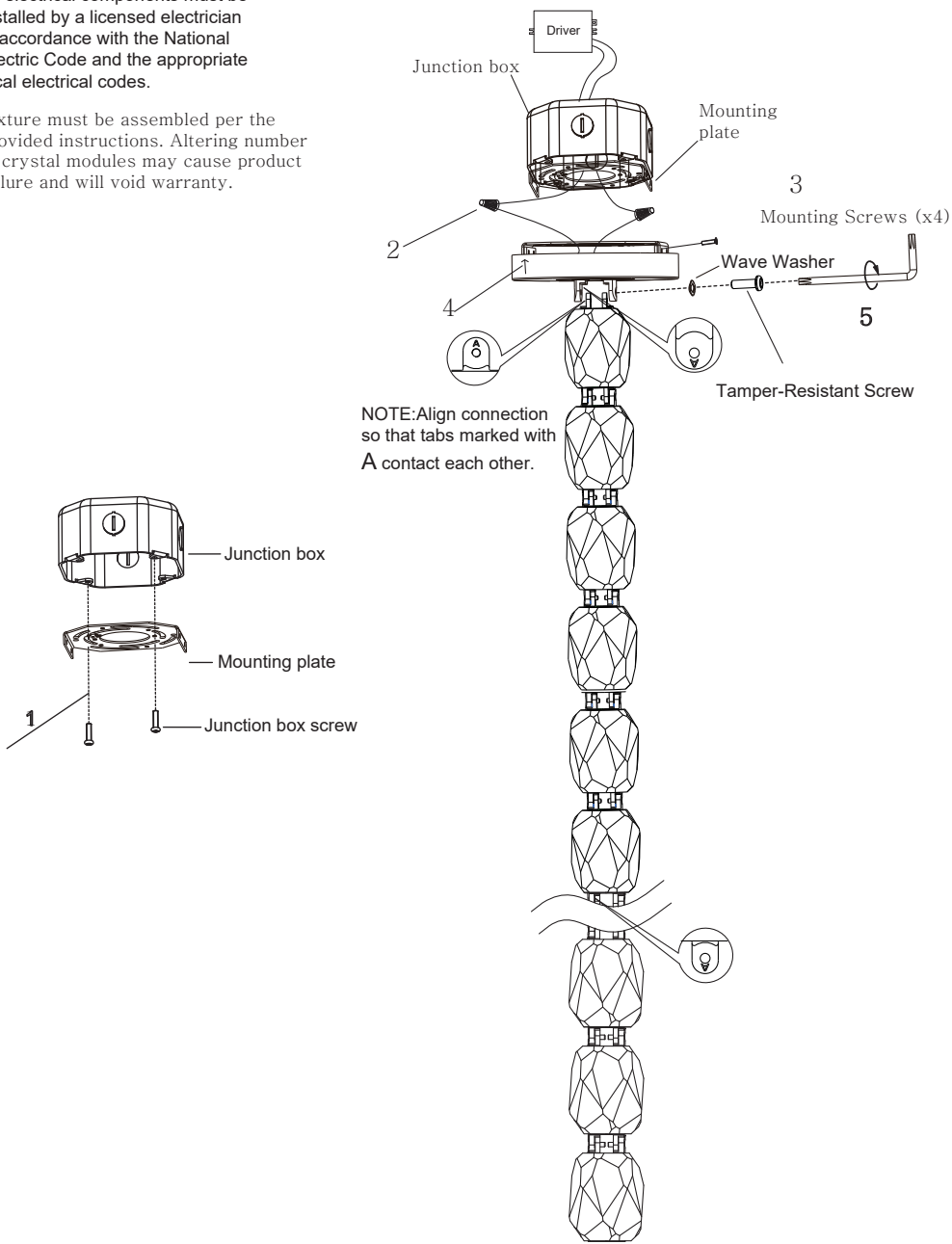
FOREVER  
SCHONBEK



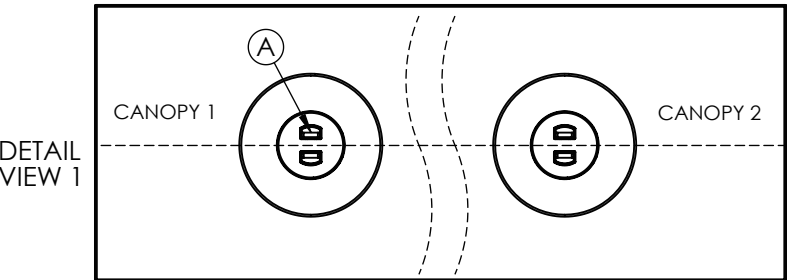
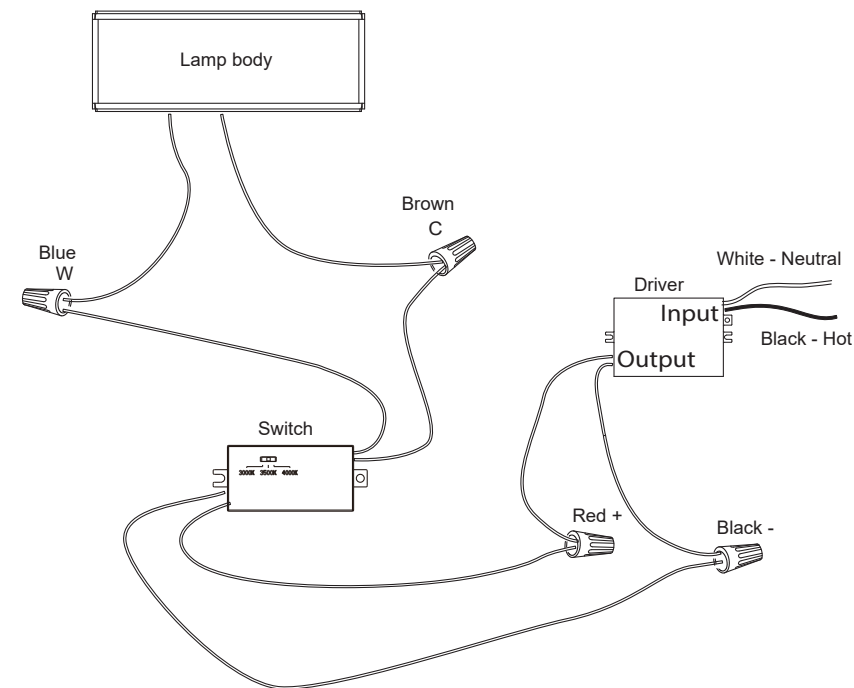
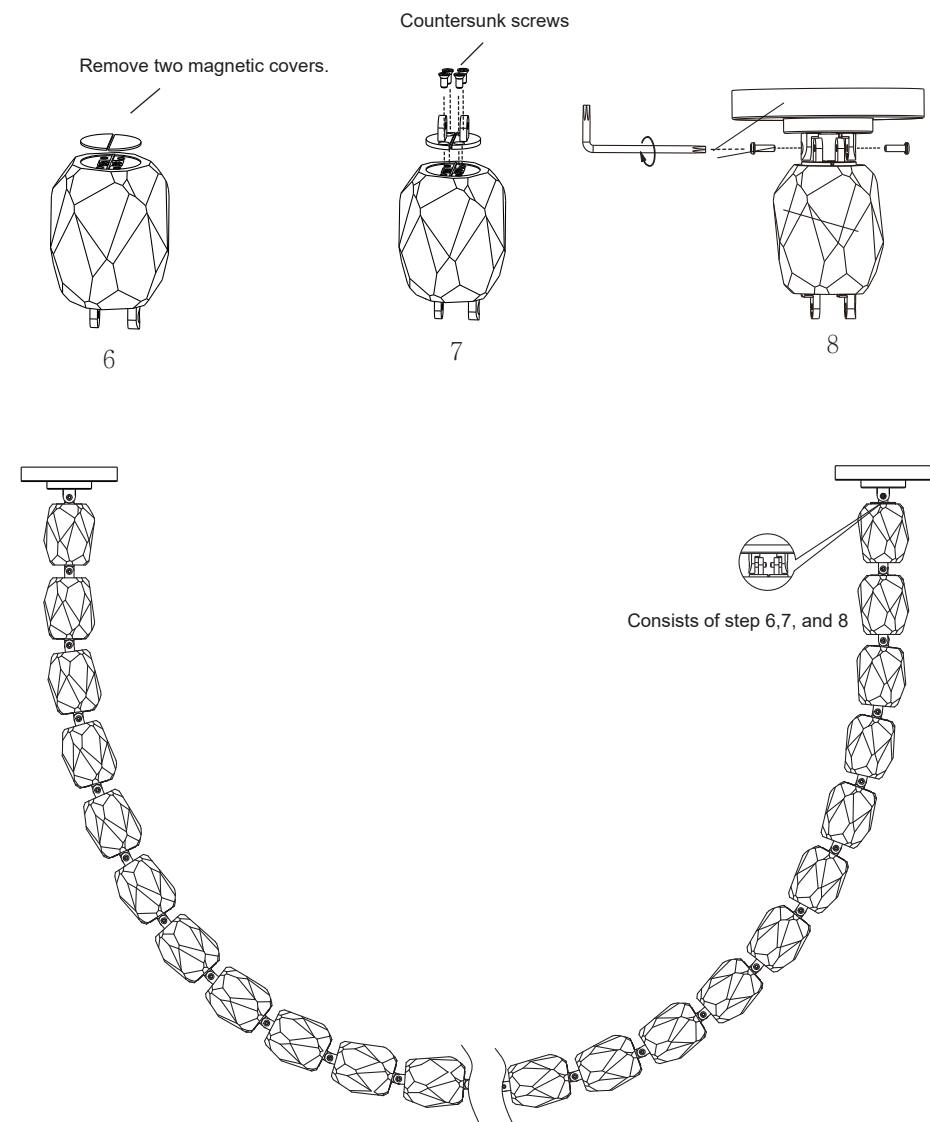
[WWW.SCHONBEK.COM/INSTALLATIONMANUAL](http://WWW.SCHONBEK.COM/INSTALLATIONMANUAL)

All electrical components must be installed by a licensed electrician in accordance with the National Electric Code and the appropriate local electrical codes.

Fixture must be assembled per the provided instructions. Altering number of crystal modules may cause product failure and will void warranty.



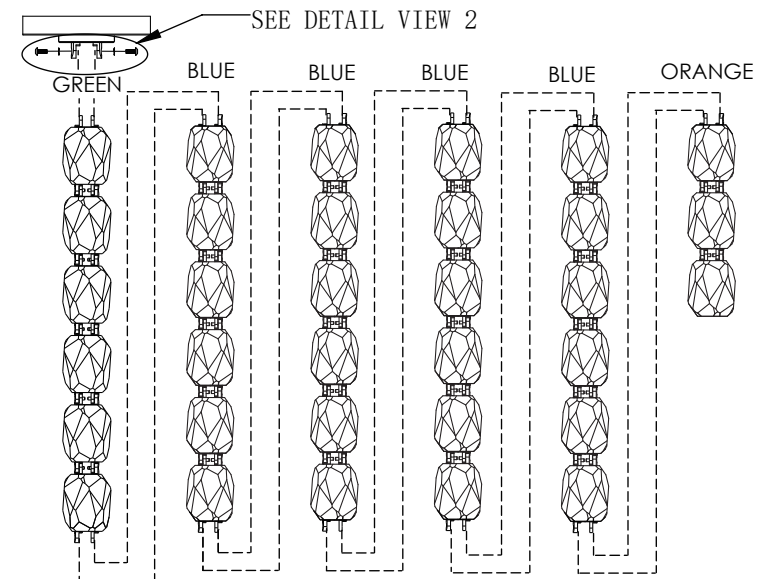
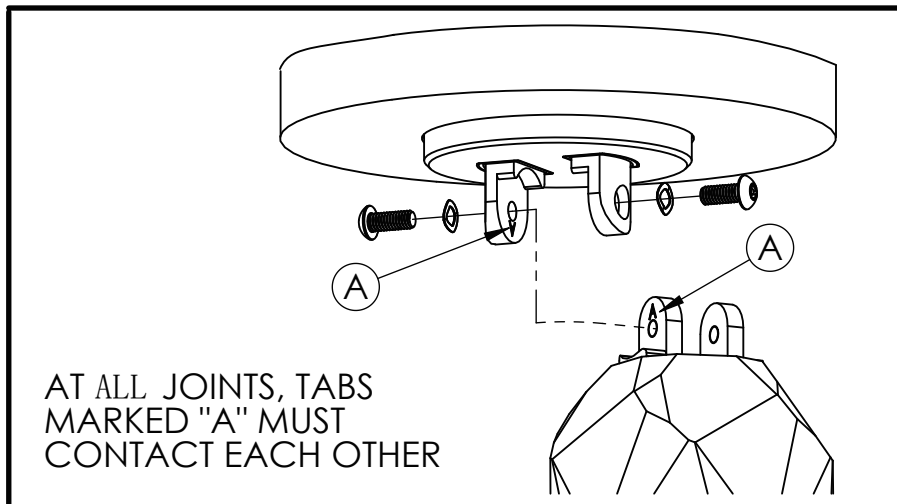
Optional Steps for Two-Canopy Structure



REPEAT STEPS 1-4 FOR BOTH CANOPIES. ORIENTATION MUST BE AS SHOWN IN DETAIL VIEW 1. THE TWO CANOPIES MUST BE MOUNTED IN LINE AS SHOWN.



## DETAIL VIEW 2



Each string of lights is identified by colored straps. Remove straps before installing. Connect sections as shown in the figure above. First, connect Green section to canopy, then attach Blue middle sections. At the end, attach Orange end section.

FULLY ASSEMBLE FIXTURE BEFORE TURNING ON POWER. TO ADJUST 3CCT SETTING, TURN OFF BEFORE ADJUSTING SWITCH.

NOTE: AT ALL JOINTS, TABS MARKED 'A' MUST CONTACT EACH OTHER