

Random Cloud,  
Design by Chia-Ying Lee

Model Random Cloud 23 Lights Ø28

Random Cloud captures the essence of why a cloud continues to fascinate us: voluminous yet simultaneously light and ethereal.



**Random Cloud 23 Lights Ø28**

Min 100 cm  
Min 39.37"  
Max 400 cm  
Max 157.48"

Ø 36 cm  
Ø 14.17"  
4 cm  
1.57"

Ø 28 cm  
Ø 11.02"  
172 cm  
67.71"

**Light source**

2700 K  
115 W  
10350 lm  
220-240 V  
CRI 90  
MacAdam 3- Step

or

3000 K  
115 W  
11040 lm  
220-240 V  
CRI 90  
MacAdam 3- Step

LED and driver included

**Canopy: Metal**

Matte White – 9010
Matte White – 9010
Matte White – 9010
Matte White – 9010
Matte White – 9010
Matte White – 9010
Matte White – 9010

**Diffuser: Blown glass**

Clear
Frosted White
Chrome
Glossy Smoke
Glossy Bronze
Gold
Rose Gold

Code 2700 K	Code 3000 K
22128 0027	22128 0030
22128 1327	22128 1330
22128 4027	22128 4030
22128 4327	22128 4330
22128 4627	22128 4630
22128 5027	22128 5030
22128 5527	22128 5530

Net weight: 44.54 kg

Parcels: 47

Connectable directly to a 4" Standard J-Box

CE

IP20

Energy Saving

Dim Triac

EAC

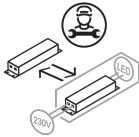
BALI  
CONTROLABLE

Energy efficiency class

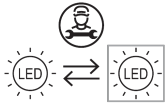


Ecodesign Regulation

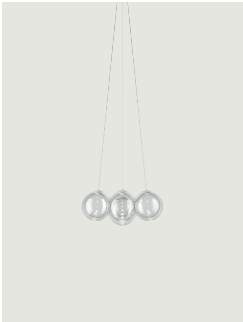
The LED driver contained in this fixture must only be replaced by the manufacturer, its support service or similarly qualified personnel.



The LED-only light source contained in this fixture must only be replaced by the manufacturer, its support service or similarly qualified personnel.



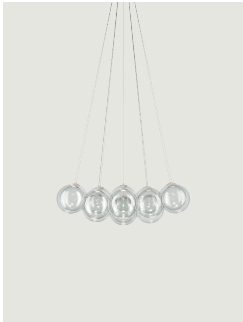
Options of Random Cloud



Random Cloud 7 Lights Ø23



Random Cloud 7 Lights Ø28



Random Cloud 14 Lights  
Ø23



Random Cloud 14 Lights  
Ø28