

## Rivet



Mold No. 715

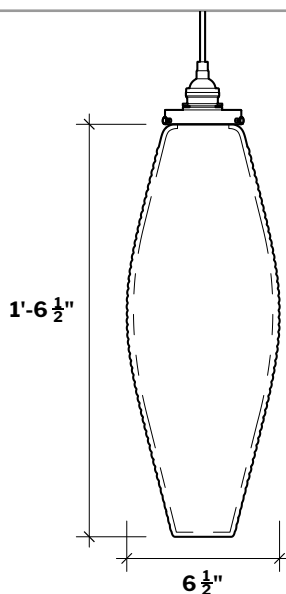
Collection Mid-Century Modern

Year 2019

Part of Silica Studio's original Mid-Century Modern collection, the Rivet Pendant Light's streamline design that calmly illuminates a soft glow into any space. Its slim silhouette is accentuated by thin horizontal bands that wrap around its tapered cylindrical glass form. The blown glass pendant can stand alone, or it can be paired with its complements, the Eclipse and Tank pendants.

### Featured in Photo

Enamel White Handmade Glass Shade  
Steel Finish Hardware, LED Bulb (2700K)



### Material

Handmade mold-blown glass



### Electrical & Hardware

field-cuttable, 8' fabric braided cord; custom options available at inquiry

### Lamping Information

*(bulb not provided, equivalent LED bulb may be used)*

300mm T10 bulb	
5.5 W LED filament	average 15,000 hour lifespan
100-130 V	450 Lumens
2700K	TRIAC dimmable

### Lead Time

Generally in stock (in limited quantities) and ships within 3-5 weeks

### Product Page

[www.silicastudio.com/shop/p/rivet-pendant-light](http://www.silicastudio.com/shop/p/rivet-pendant-light)

### Dimensions

18.5" H X 6.5" W X 6.5" D

### Finish Options



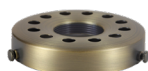
Black



Brass



Nickel



Antique Brass

## Rivet

### Fitter Finish Options

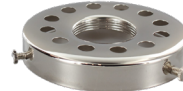
Overview of offered finishes, not available for every product.



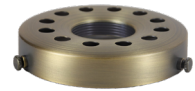
Black



Brass



Nickel



Antique Brass

### Ceiling + Cord Color Options

Cords are 8' and field-cuttable, not available for every product.



Black



Brass



Nickel



Antique Brass

### Glass Color Options

Color available in limited quantities; contact Silica Studio for availability.



Gold Ruby EL



Olive Brown



Hyacinth Violet



Steel Blue



Enamel White



Pale Oceana



Salmon Pink



Gold Amethyst



Copper Blue



Grey



Jade Green



Cinnamon

### Custom Color Requests

Need a custom glass color or hardware finish option? Contact us at [silicastudio@rockcottageglassworks.com](mailto:silicastudio@rockcottageglassworks.com) with what pendants you're interested in, and we'll work with you to create a custom order.