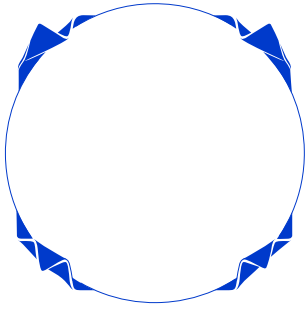
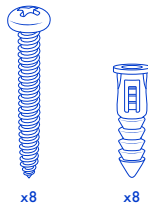


# MIRA WALL MIRROR

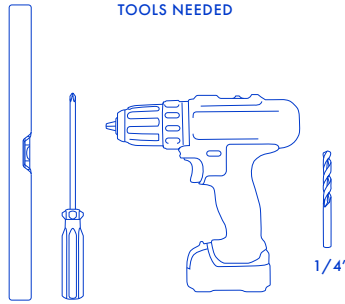


The included anchors and screws are intended solely for use with drywall. Before installing, determine your wall's material and opt for different fastening equipment if necessary. If you're uncertain, seek expert advice.

## PROVIDED HARDWARE

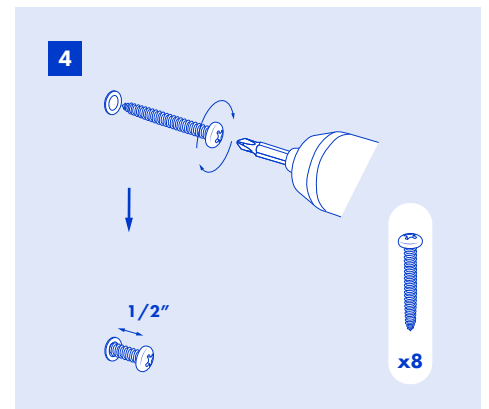
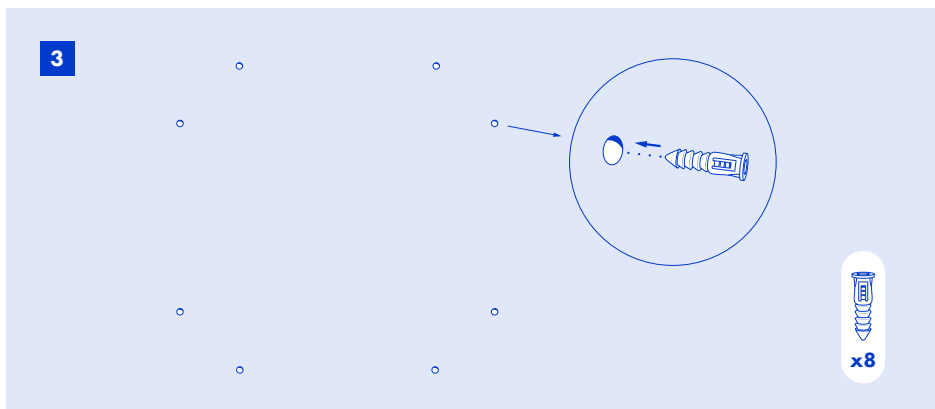
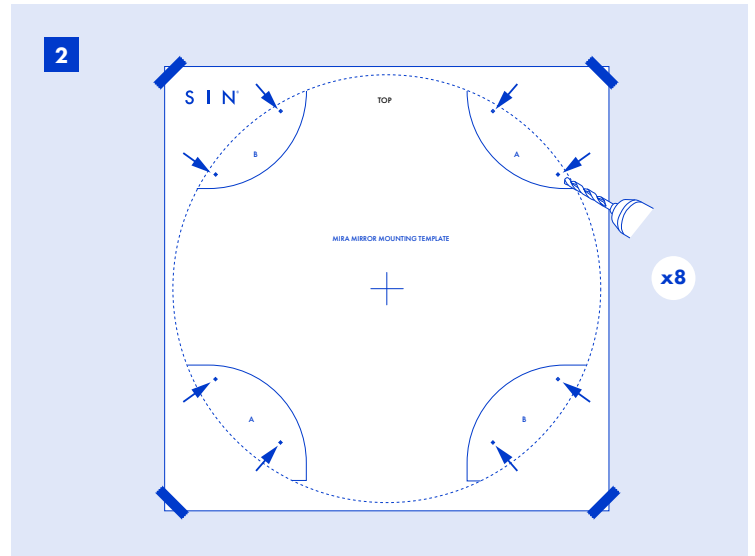
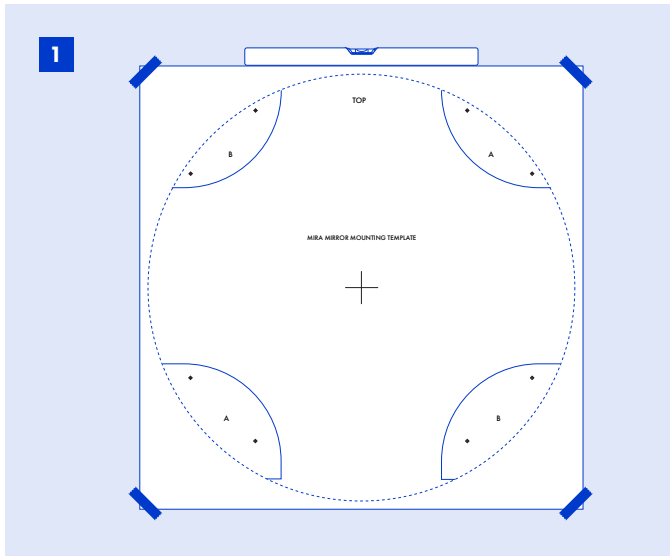


## TOOLS NEEDED



## INSTALLATION INSTRUCTIONS

- 1 Level the mounting template and secure it to the wall.
  - 2 Drill holes where marked. Use a 1/4" bit if using the provided anchors.
- WARNING:** Anchors are for drywall only. Other surfaces may require different fasteners.
- 3 Remove template after drilling holes and insert the provided anchors.
  - 4 Drill in the provided screws, but do not fully tighten—leave about 1/2" exposed.



# MIRA WALL MIRROR

## INSTALLATION INSTRUCTIONS (CONT.)

- 5 Slide corresponding brackets onto screws through the keyholes.
- 6 Gently tighten (or loosen if needed) the screws with a screwdriver, making sure the top two brackets are loose enough to slide off.

**WARNING:** Overtightening may crack the brackets.

- 7 Remove the top 2 brackets.
- 8 Place the mirror into the bottom brackets.
- 9 While slightly tilting the top of the mirror away from the wall, slide both top brackets (at the same time) behind the mirror until the screws pass through the keyholes and the brackets slide into place.

